

Product datasheet for **MG221893**

5031439G07Rik (NM_001033273) Mouse Tagged ORF Clone

Product data:

Product Type:	Expression Plasmids
Product Name:	5031439G07Rik (NM_001033273) Mouse Tagged ORF Clone
Tag:	TurboGFP
Symbol:	5031439G07Rik
Synonyms:	AW554572; mKIAA0930
Mammalian Cell Selection:	Neomycin
Vector:	pCMV6-AC-GFP (PS100010)
E. coli Selection:	Ampicillin (100 ug/mL)



[View online »](#)

ORF Nucleotide Sequence:

>MG221893 representing NM_001033273
 Red=Cloning site Blue=ORF Green=Tags(s)

TTTTGTAATACGACTCACTATAGGGCGGCCGGGAATTCGTCGACTGGATCCGGTACCGAGGAGATCTGCC
 GCC**GCGATCGCC**

ATGGCCTCCGCGCGCCCGCGGCAGGGCCTGTGCCTCGCGCTCCGCGCCCGGGGCTCCGGGCTGGGC
 CGGCCGCTCCCGGAGTCCGTGGACAGCAGCGAAGCGGAGGAGCGCTCGTTGCAGCACATGCTGCGCGC
 CATAGCCGAGGAGCGCGACGCCTTAGCCTGCGCCGTGAGGTCTGCGGCCTGGGTTGCTTCAAGGATGAC
 CGCATCGTCTTCTGGACGTGGATGTTCTACTACTTTCATGGAGAACTGGCTCCCGACAGGATGACA
 TGCTCTTCTACGTGCGCAGGAAGCGAGCCTACCCAGGCAACGAGGGCACCATCGATGGGAGGAAGGCTGA
 GGCTGAGCCTGAGGTGGAGGTAGAAGTGTACCGGAGAGACTCTAAGAAGCTTCCGGGCTGGGAGATCCT
 GACATCGACTGGGAGGAGAGTGTCTGCCTGAACCTCATCTGCAGAAGCTGGACTACATGGTGACCTGTG
 CTGTGTGCACGCGTGCCGATGGGGTGACATCCACATCCACAGGAAGAAGTCCAGCAAGTGTTCCTC
 CCCCAGCAAACACCCATGGACAGCAAAGGAGAAGAGTCCAAGATGAGCTACCCCAACATCTTCTCATG
 ATTGACAGCTTTGAGGAGGTGTTTAGTGACATGACCGTGGGGGAAGGAGAGATGGTCTGCGTTGAGCTGG
 TCGCCAGCGACAAAACACACGTTCCAGGGTGTATCTTTCAGGGCTCCATCCGATACGAGGCACTCAA
 GAAGGTGTACGACAACCGCGTGAGCGTGCTCGCATGGCCCAGAAGATGTCATTTGGCTTCTACAAG
 TACAACAACATGGAGTTTGTGCGCATGAAGGGCCTCAGGGCAAGGGCCATGCAGAGATGGCAGTGAGCC
 GAGTGTCCACCGGTGACACATCCCCCTGTGGGACCGAAGATTCAAGCCAGCTTCGCCCATGCATGAGCG
 GGTGACCTCCTTAGCACCCCGCCACCCAGAGCGAAACAACCGGCCTGCCTTCTTCCCCGTCCTT
 AAGAGGAAGGTGCCACGGAACCGCATCGCCGAGATGAAGAAATCACACTCAGCCAACGACAGCGAGGAGT
 TCTTCCGAGAGGACGACAGTGGAGCCGACCTGCACAATGCCAACCTGCGATCTCGGTCCCTGTCTGG
 CACAGGACGGTCCCTGGTCGGTCTGGCTGAAGCTAAACCGAGCTGATGGGAACCTCCTTCTCTATGCA
 CACCTGACCTATGCACTTTGCCCTGCATCGGATCTTAACAGACATCTGGAAGTACGGCAGAAACCCA
 TCTTGATGACC

AG**GCGACCG**ACGCGTACGCGGCCGCTCGAG - GFP Tag - GTTTAA

Protein Sequence:

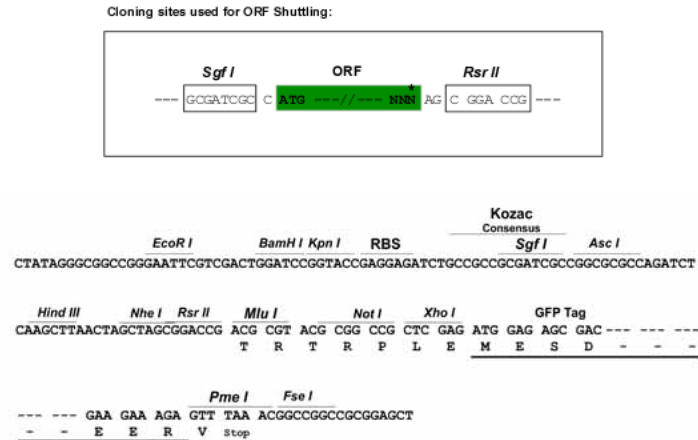
>MG221893 representing NM_001033273
 Red=Cloning site Green=Tags(s)

MASARPPGRACASASAPAGLRAGPAASRESVDSSEAEERSLQHMLRAIAEERGRSLRREVCGLGCFKDD
 RIVFWTWMFSTYFMEKLAPRQDDMLFYVRRKRAYPGNEGIDGRKAEAEPEVEVEVYRRDSKKLPGLGDP
 DIDWEESVCLNLILQKLDYMTCAVCTRADGGDIHHRKKSQQVFASPSKHPMDSKGEEKMSYPNIFFM
 IDSFEVVFSDMTVGEEMVCVELVASDKTNTFQGVIFQGSIRYEALKKVYDNRVVAARMAQKMSFGFYK
 YNNMEFVRMKGPKGKHAEMAVSRVSTGDTSPCGTEDSSPASPHERVTSFSTPPTPERNNRPAFFSPSL
 KRKVPRNRRIAEMKKSANDSEEFFREDDSGADLHNATNLRSLSGTGRSLVGSWLKLNADGNFLLYA
 HLTYYVTLPLHRILTDILEVRQKILMT

SGP**TRRRLE** - GFP Tag - V

Restriction Sites:

Sgfl-RsrII

Cloning Scheme:


ACCN: NM_001033273

ORF Size: 1341 bp

OTI Disclaimer: The molecular sequence of this clone aligns with the gene accession number as a point of reference only. However, individual transcript sequences of the same gene can differ through naturally occurring variations (e.g. polymorphisms), each with its own valid existence. This clone is substantially in agreement with the reference, but a complete review of all prevailing variants is recommended prior to use. [More info](#)

OTI Annotation: This clone was engineered to express the complete ORF with an expression tag. Expression varies depending on the nature of the gene.

Components: The ORF clone is ion-exchange column purified and shipped in a 2D barcoded Matrix tube containing 10ug of transfection-ready, dried plasmid DNA (reconstitute with 100 ul of water).

Reconstitution Method:

1. Centrifuge at 5,000xg for 5min.
2. Carefully open the tube and add 100ul of sterile water to dissolve the DNA.
3. Close the tube and incubate for 10 minutes at room temperature.
4. Briefly vortex the tube and then do a quick spin (less than 5000xg) to concentrate the liquid at the bottom.
5. Store the suspended plasmid at -20°C. The DNA is stable for at least one year from date of shipping when stored at -20°C.

RefSeq: [NM_001033273.2](#), [NP_001028445.1](#)

RefSeq Size: 5032 bp

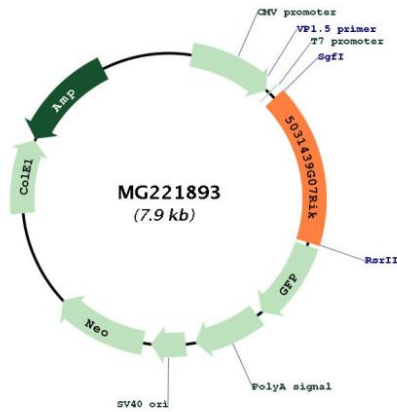
RefSeq ORF: 1344 bp

Locus ID: 223739

UniProt ID: [Q3UE31](#)

Cytogenetics: 15 E2

Product images:



Circular map for MG221893