

Product datasheet for **MG221868**

Map2k5 (NM_011840) Mouse Tagged ORF Clone

Product data:

Product Type:	Expression Plasmids
Product Name:	Map2k5 (NM_011840) Mouse Tagged ORF Clone
Tag:	TurboGFP
Symbol:	Map2k5
Synonyms:	AI324775; AI428457; Mapkk5; MEK5; Prkmk5
Mammalian Cell Selection:	Neomycin
Vector:	pCMV6-AC-GFP (PS100010)
E. coli Selection:	Ampicillin (100 ug/mL)



[View online »](#)

ORF Nucleotide Sequence:

>MG221868 representing NM_011840
 Red=Cloning site Blue=ORF Green=Tags(s)

TTTTGTAATACGACTCACTATAGGGCGGCCGGAATTCGTCGACTGGATCCGGTACCGAGGAGATCTGCC
 GCCGCGATCGCC

ATGCTGTGGCTGGCCCTTGCCCTTCTGTGCCATGGAGAACCAGGTGCTGGTGATTTCGGATCAAGATTC
 CAAATAGTGGCGGGTGGACTGGACCGTCACTCCGGGCCGAGTTACTCTTCAGGGATGTTCTGGATGT
 GATAGGCCAGGTTCTGCCTGAAGCGACGACGACAGCGTTTGAATATGAAGATGAAGATGGTGATAGGATT
 ACAGTAAGAAGCGATGAAGAGATGAAGGCAATGCTGTCCTACTATTATCCACAGTAATGGAACAGCAAG
 TAAATGGCCAGCTAATAGAGCCGCTGCAGATATTTCCAAGAGCCTGCAAGCCTCTGGGGAACGGAACAT
 ACATGGCCTGAAGGTGAATACACGGGCTGGGCCATCTCAACACACCAGCCCTGTGGTCTCAGATTCGCTT
 CCAAGCAATAGCTGAAGAAGTCTCAGCTGAAGTACTGAGAAAGATACTGGCCAACGGCCAGATGAATGAAC
 AAGACATACGGTATCGAGACACCCTTGGTCATGGCAACGGAGGCACAGTCTACAAAGCACATCATGTCCC
 AAGTGGGAAAATTTAGCTGTAAGGTTATTCTGTTAGACATTACTGGAGCTTCAGAAGCAGATCATG
 TCTGAGCTGGAATCCTTTATAAGTGTGACTCATCGTATATCATAGGATTTTACGGGGCATTTCGTTAG
 AAAACAGGATTTCAATTTGTACAGAATTCATGGATGGGGGCTTTGGATGTATATAGGAAAATTCAGA
 GCACGTCCTTGAAGAATTGCAGTTGCAGTTGTTAAAGGCCTTACCTATCTGTGGAGTTTAAAGATTTTA
 CACAGAGATGTGAAGCCCTCCAACATGCTTGTAAACACAGGCGGACAGGTCAAGCTGTGTGACTTTGGCG
 TGAGCACACAGCTGGTGAATTCATAGCCAAGACGTATGTTGGAACAAATGCTTACATGGCACCAGAAAAG
 AATTTCCAGGAGAGCAGTATGGGATCCATTCTGACGTGTGGAGCTTAGGAATCTCTTTCATGGAGCTTGCT
 CTTGGGAGGTTTCCATATCCTCAGATTCAGAAAAACCAGGGATCTTTAATGCCTCCAGCTTCTGCAGT
 GCATTGTTGATGAGGATTCGCCGCTCCTCCGCTTGGAGAGTTCTCGGAGCCGTTTGTACATTTTCATCAC
 TCAGTGCATGAGGAAGCAGCCCAAGGAGAGACCGGCGCCTGAGGAGCTGATGGGTACCCATTTCATCGTG
 CAGTTCAATGATGAAAATCCACTGTGGTGTCCATGTGGGTGTGCCGAGCTCTAGAGGAGAGGCGGAGCC
 AGCAGGGACCCCG

ACGCGTACGCGGCCGCTCGAG - GFP Tag - GTTTAA

Protein Sequence:

>MG221868 representing NM_011840
 Red=Cloning site Green=Tags(s)

MLWLALGPFCA MENQVLVIRIKIPNSGAVDWTVHSGPQLLFRDVLVIGQVLPEATTTAFEYEDEDGDRI
 TVRSDEEMKAMLSYYYSTVMEQQVNGQLIEPLQIFPRACKPPGERNIHGLKVNTRAGPSQHTSPVSDSL
 PSNSLKKSSAELRKILANGQMNEQDIRYRDTLGHGNGGTVYKAHVPSGKILAVKVILLDITLLELQKQIM
 SELEILYKCDSSYIIGFYGAFFVENRISICTEFMDGGSLDVYRKIPEHVLGRIAVAVVKGLTYLWLSKIL
 HRDVKPSNMLVNTGGQVKLCDFGVSTQLVNSIAKTYVGTNAYMAPERISGEQYGIHSDVWSLGISFMELA
 LGRFPYPQIQKNQGLMPLQLLQCIVDEDESPVLPPLGEFSEPFVHFITQCMRKQPKERPAPEELMGHPFIV
 QFNDGNSTVVSMWVCRALEERRSQGPP

TRTRPLE - GFP Tag - V

Restriction Sites:

SgfI-MluI

Cloning Scheme:


ACCN: NM_011840

ORF Size: 1344 bp

OTI Disclaimer: Due to the inherent nature of this plasmid, standard methods to replicate additional amounts of DNA in E. coli are highly likely to result in mutations and/or rearrangements. Therefore, OriGene does not guarantee the capability to replicate this plasmid DNA. Additional amounts of DNA can be purchased from OriGene with batch-specific, full-sequence verification at a reduced cost. Please contact our customer care team at custsupport@origene.com or by calling 301.340.3188 option 3 for pricing and delivery.

The molecular sequence of this clone aligns with the gene accession number as a point of reference only. However, individual transcript sequences of the same gene can differ through naturally occurring variations (e.g. polymorphisms), each with its own valid existence. This clone is substantially in agreement with the reference, but a complete review of all prevailing variants is recommended prior to use. [More info](#)

OTI Annotation: This clone was engineered to express the complete ORF with an expression tag. Expression varies depending on the nature of the gene.

Components: The ORF clone is ion-exchange column purified and shipped in a 2D barcoded Matrix tube containing 10ug of transfection-ready, dried plasmid DNA (reconstitute with 100 ul of water).

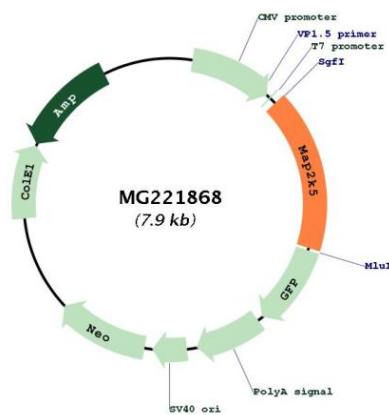
- Reconstitution Method:**
1. Centrifuge at 5,000xg for 5min.
 2. Carefully open the tube and add 100ul of sterile water to dissolve the DNA.
 3. Close the tube and incubate for 10 minutes at room temperature.
 4. Briefly vortex the tube and then do a quick spin (less than 5000xg) to concentrate the liquid at the bottom.
 5. Store the suspended plasmid at -20°C. The DNA is stable for at least one year from date of shipping when stored at -20°C.

RefSeq: [NM_011840.3](#)

RefSeq Size: 2258 bp
 RefSeq ORF: 1347 bp
 Locus ID: 23938
 UniProt ID: [Q9WVS7](#)
 Cytogenetics: 9 B-C

Gene Summary: Acts as a scaffold for the formation of a ternary MAP3K2/MAP3K3-MAP3K5-MAPK7 signaling complex. Activation of this pathway appears to play a critical role in protecting cells from stress-induced apoptosis, neuronal survival and cardiac development and angiogenesis. [UniProtKB/Swiss-Prot Function]

Product images:



Circular map for MG221868