

## Product datasheet for **MG221855**

### Hpse (NM\_152803) Mouse Tagged ORF Clone

#### Product data:

Product Type:	Expression Plasmids
Product Name:	Hpse (NM_152803) Mouse Tagged ORF Clone
Tag:	TurboGFP
Symbol:	Hpse
Synonyms:	H; Hpa; Hpr1; HSE1
Mammalian Cell Selection:	Neomycin
Vector:	pCMV6-AC-GFP (PS100010)
E. coli Selection:	Ampicillin (100 ug/mL)



[View online »](#)

**ORF Nucleotide Sequence:**

>MG221855 representing NM\_152803  
 Red=Cloning site Blue=ORF Green=Tags(s)

TTTTGTAATACGACTCACTATAGGGCGGCCGGAATTCGTCGACTGGATCCGGTACCGAGGAGATCTGCC  
 GCC**CGGATCGCC**

ATGCTGAGGCTGCTGCTGTGGCTCTGGGGCCGCTCGGTGCCCTGGCCAGGGCGCCCCGCGGGA  
 CCGCGCCGACCGACGACGTGGTAGACTTGGAGTTTTACACCAAGCGGCCGCTCCGAAGCGTGAGTCCCTC  
 GTTCTGTCCATCACCATCGACGCCAGCCTGGCCACCGACCCGCGCTTCCTCACCTTCTGGGCTCTCCA  
 AGGCTCCGTGCTCTGGCTAGAGGCTTATCTCTGCATACTTGAGATTTGGCGGCACAAAGACTGACTTCC  
 TTTTTTTGATCCGGACAAGGAACCGACTTCCGAAGAAAGAAAGTTACTGGAAATCTCAAGTCAACCATGA  
 TATTTGCAGGTCTGAGCCGGTCTCTGCTGCGGTGTTGAGGAACTCCAGGTGGAATGGCCCTTCCAGGAG  
 CTGTTGCTGCTCCGAGAGCAGTACAAAAGGAGTTCAAGAACAGCACCTACTCAAGAAGCTCAGTGGACA  
 TGCTCTACAGTTTGCCTAAGTCTCGGGTTAGACCTGATCTTTGGTCTAAATGCGTTACTACGAACCCC  
 AGACTTACGGTGAACAGCTCCAACGCCAGCTTCTCCTTGACTACTGCTTTCCTCAAGGGTTATAACATC  
 TCTTGGAACTGGCAATGAGCCCAACAGTTTCTGGAAGAAAGCTCACATTCTCATCGATGGGTTGCACT  
 TAGGAGAAGACTTTGTGGAGTTGCATAAACTTCTACAAAGGTCAGCTTTCAAAAATGCAAAACTCTATGG  
 TCTTGACATCGGTGAGCCTCGAGGGAAGACAGTTAAACTGCTGAGGAGTTTCTGAAGGCTGGCGGAGAA  
 GTGATCGACTCTTACATGGCATCACTATTACTTGAATGGACGCATCGTACCAAGAAGATTTTCTGA  
 GCTCTGATGTGCTGGACACTTTTATTCTCTGTGCAAAAAATTTGAAGGTCACAAAGAGATCACACC  
 TGGCAAGAAGGTCTGGTGGGAGAGACGAGCTCAGCTTACGGTGGCGGTGCACCCCTTGTGTCCAACACC  
 TTTGCAGCTGGCTTTATGTGGCTGGATAAATGGGCCTGTGAGCCAGATGGGCATAGAAGTCGTGATGA  
 GGCAGGTGTTCTCGGAGCAGGCAACTACCCTTAGTGGATGAAAACTTTGAGCCTTTACCTGATTACTG  
 GCTCTCTTCTGTCAAGAACTGGTAGTCCCAGGGTGTACTGTCAAGAGTGAAGGCCAGACAGG  
 AGCAAACTCCGAGTGATCTCCACTGCACTAACGTCTATCACCCAGATATCAGGAAGGAGATCTAACTC  
 TGTATGCTGAACTCCATAATGTCACCAAGCACTTGAAGGTACCGCCTCCGTTGTTCCAGGAAACCAGT  
 GGATACGTACCTTCTGAAGCCTTCGGGGCCGGATGGATTACTTTCCAAATCTGTCCAACCTGAACGGTCAA  
 ATTCTGAAGATGGTGGATGAGCAGACCCTGCCAGCTTTGACAGAAAACTCTCCCCGAGGAAGTGAC  
 TAAGCTGCCTTTTCTATGGTTTTTTTGTGATAAGAAATGCCAAATCGCTGCTTGATA

**ACGCGTACGCGGCCGCTCGAG** – GFP Tag – GTTTAA

**Protein Sequence:**

>MG221855 representing NM\_152803  
 Red=Cloning site Green=Tags(s)

MLRLLLLLWLGPLGALAQGAPAGTAPTDDVVDLEFYTKRPLRSVSPSFLSITIDASLATDPRFLTFLGSP  
 RLRALARGLSPAYLRFGGTKDFLIFDPDKPTSEERSYWKSQVNHDIRSEPVSAAVLRKLQVEWPFQE  
 LLLLREYQKEFKNSTYSRSSVDMLYSFAKCSGLDLIFGLNALLRTPDLRWSSNAQLLLDYCSSKGYNI  
 SWELGNEPNSFWKKAHILIDGLQLGEDFVELHKLQSAFQNAKLYGPDIGQPRGKTVKLLRSFLKAGGE  
 VIDSLTWHHYLNGRIATKEDFLSSDVLDTFILSVQKILKVTKEITPGKKVWLGETSSAYGGGAPLLSNT  
 FAAGFMWLDKLGLSAQMGIEVVMRQVFFGAGNYHLVDENFEPLPDYWL SLLFKKLVGPRVLLSRVKGPDR  
 SKLRVYLHCTNVYHPRYQEGDLTLYVLNLHNVTKHLKVPPLFRKPVDTYLLKPSGPDGLLSKSVQLNGQ  
 ILKMQVDEQTLPALTEKPLPAGSALSLPAFSYGFVIRNAKIAACI

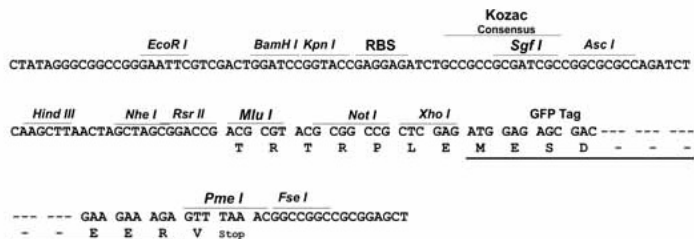
**TRTRPLE** – GFP Tag – V

**Restriction Sites:**

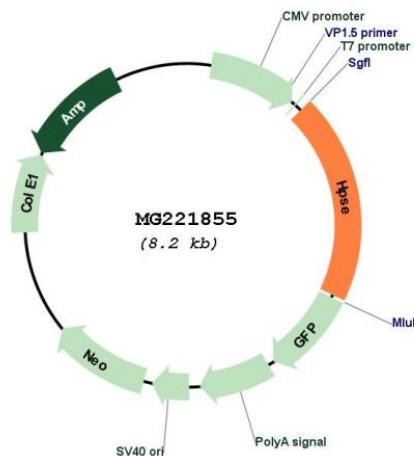
Sgfl-Mlul

Cloning Scheme:

Cloning sites used for ORF Shutting:



Plasmid Map:



<b>ACCN:</b>	NM_152803
<b>ORF Size:</b>	1605 bp
<b>OTI Disclaimer:</b>	<p>Due to the inherent nature of this plasmid, standard methods to replicate additional amounts of DNA in E. coli are highly likely to result in mutations and/or rearrangements. Therefore, OriGene does not guarantee the capability to replicate this plasmid DNA. Additional amounts of DNA can be purchased from OriGene with batch-specific, full-sequence verification at a reduced cost. Please contact our customer care team at <a href="mailto:custsupport@origene.com">custsupport@origene.com</a> or by calling 301.340.3188 option 3 for pricing and delivery.</p> <p>The molecular sequence of this clone aligns with the gene accession number as a point of reference only. However, individual transcript sequences of the same gene can differ through naturally occurring variations (e.g. polymorphisms), each with its own valid existence. This clone is substantially in agreement with the reference, but a complete review of all prevailing variants is recommended prior to use. <a href="#">More info</a></p>
<b>OTI Annotation:</b>	This clone was engineered to express the complete ORF with an expression tag. Expression varies depending on the nature of the gene.
<b>Components:</b>	The ORF clone is ion-exchange column purified and shipped in a 2D barcoded Matrix tube containing 10ug of transfection-ready, dried plasmid DNA (reconstitute with 100 ul of water).
<b>Reconstitution Method:</b>	<ol style="list-style-type: none"> <li>1. Centrifuge at 5,000xg for 5min.</li> <li>2. Carefully open the tube and add 100ul of sterile water to dissolve the DNA.</li> <li>3. Close the tube and incubate for 10 minutes at room temperature.</li> <li>4. Briefly vortex the tube and then do a quick spin (less than 5000xg) to concentrate the liquid at the bottom.</li> <li>5. Store the suspended plasmid at -20°C. The DNA is stable for at least one year from date of shipping when stored at -20°C.</li> </ol>
<b>RefSeq:</b>	<a href="#">NM_152803.5</a>
<b>RefSeq Size:</b>	3082 bp
<b>RefSeq ORF:</b>	1608 bp
<b>Locus ID:</b>	15442
<b>UniProt ID:</b>	<a href="#">Q6YGZ1</a>
<b>Cytogenetics:</b>	5 E4
<b>Gene Summary:</b>	<p>This gene encodes an endoglucuronidase enzyme that plays an important role in tumor invasion and metastasis. The encoded preproprotein undergoes proteolytic processing to generate an active heterodimeric enzyme that cleaves the heparan sulfate proteoglycans associated with the cell surface and extracellular matrix. Mice lacking the encoded protein do not show any prominent pathological alterations under normal conditions but fail to develop albuminuria and renal damage in response to drug-induced diabetes. [provided by RefSeq, Aug 2016]</p>