

Product datasheet for **MG221851**

Erbin (NM_001005868) Mouse Tagged ORF Clone

Product data:

Product Type:	Expression Plasmids
Product Name:	Erbin (NM_001005868) Mouse Tagged ORF Clone
Tag:	TurboGFP
Symbol:	Erbin
Synonyms:	1700028E05Rik; Erbb2ip; mKIAA1225
Mammalian Cell Selection:	Neomycin
Vector:	pCMV6-AC-GFP (PS100010)
E. coli Selection:	Ampicillin (100 ug/mL)
ORF Nucleotide Sequence:	>MG221851 representing NM_001005868 Red=Cloning site Blue=ORF Green=Tags(s)

TTTTGTAATACGACTCACTATAGGGCGGCCGGAATTCGTCGACTGGATCCGGTACCGAGGAGATCTGCC
GCC**CGATCGCC**

ATGACTACAAAACGAAGTTTGTGGTGGTACCATGTCGCTGTCTACGAGGAGAAGAGGAGACAG
TCACTACTCTAGATTATTCTCATTGCAGCTTGGAAACAAGTTCCCAAAGAGATTTTCACCTTTGAAAAAC
TTTAGAGGAGCTCTATTTAGATGCTAATCAGATTGAAGAGCTTCCAAAGCACTTTTAAATTGTCAGTCT
CTACATAAACTAAGTTTCCAGACAATGATTTAAACAACATTACCAGCCTCCATTGCAAACTTTATTAATC
TCAGGGAAGTGGATGTCAGCAAAAATGGAATACAAGAATTTCCAGAAAATATTAATAAATTGTAAAGTTTT
GACAATTTGGAGGCTAGTGTGAACCTATTTCTAAGCTCCCTGATGGGTTTTCTCAGCTGCTAAACCTA
ACCCAGTTATATCTGAATGATGCTTTCCTTGAATTCCTACCAGCTAATTTTGGCAGATTAACATAAATCC
AGATTCTAGAAGTCTAGAGAAAACAGTTGAAAATGTTGCCTAAAACCATGAATAGACTGACCCAGCTGGA
AAGGCTGGATTTGGGAAGTAATGAATTCACAGAAGTGCCTGAAGTACTTGAACAACCTAAGTGGATTGAGA
GAGTTTGGATGGATGGCAATAGACTGACTTTTATCCAGGGTTTATTGGTAGTTTGGAGACAGCTCACGT
ACTTGGATGTTTCTAAAAATAATTTGAAATGGTTGAAGAAGGAATTTCAACATGTGAAAACCTCCAGGA
CTTTCTCTTATCAAGTAATCCCTTCAGCAGCTGCCGAAAATTTGGTTCATTGAAAAATGTCACAAC
CTAAAAATTGATGAAAACCAATTAATGTATCTACCAGACTCAATAGGAGGTTAAGTCAATAGAAGAAC
TGGATTGCAGTTTCAATGAAATGAAGCTTTGCCTTCTCAATTGGCCAGCTCACAAACATGAGAACATT
TGCTGCAGATCACAATTACTTACAACAGCTACCCCCAGAGATTGAAAACCTGGAAAAATATAACTGTGCTG
TTTCTCCATTGAATAAACTAGAGACGCTTCCAGAGGAAATGGGTGATATGCAAAAATTAAGTGCATCA
ATTTAAGTGATAATAGGTTAAAGAATTTGCCTTTAGCTTTACAAAGCTACAACAGTTGACTGCTATGTG
GCTGTCAGATAATCAGTCCAAACCTCTGATACCTCTTCAAAAAGAAAACAGACACAGAGACTCAGAAAATG
GTGCTTACTAATTACATGTTCCCTCAGCAGCCACGGACTGAAGACGTTATGTTTCATATCAGATAATGAA
GTTTTAATCCTGCATTGTGGGAAGAACAGAGAAAACAGCGGGCTCAAGTGGCATTGAAATGTGATGAAGA
CAAAGATGAAAGAGAGGCCACCACCCAGGAGGAAAATTAAGAGATATCCAACCCATACCCAGATGAG



[View online >](#)

CTTAAGAATATGGTCAAGACTGTTCAAACCATTGTACATAGATTAAGATGAAGAGACTAATGAAGAGT
CTGGGAGAGATTTGAAGCAGCATGAAGATCAGCAAGTTGTAATAAGGATAAGTGTGTGAAGACTTCAGA
AAGTACTACAACAAAAGCAAACCTTGATGAAAGAGAAAAGTATATGAATTCTGTACAGAAAATGAGTGAG
CCTGAAGCTGAGACCAATGGTGGAAATTTGCCAGTAACTGCAAGTATGAAGTTGTCTGGAAACCTGAAGC
ATATTGTTAACCATGATGATGTTTTGAGGAATCTGAAGAACTTCTTCTGATGAAGAAAATGAAAATGGC
AGAGATGCGACCTCCATTAATTGAATCCTCGATTAATCAGCCAAAGTTGTAGCACTTAGTAATAATAAAA
AAGGATGATGCGAAGGATGCAGACTCTTATCCGATGAAGTACACACAACAGTAATCAGAATAACAGCA
ACTGTTCTTCTCCGTCCCGAATGTCTGATTCAGTGTCTCTTAATACTGACAGCAGTCAAGACACGCTCACT
CTGTTCTCCCGTGAACAGACTCCCGTGGATAGTAACTCAAAGTCAGACAAGAAGATGAAAATTTTAAC
AGCCTTTTACAAAATGGAGTTAATTTAAACAATTCACCAGAGGAAAAATCAAATTAATGATAAAAAGG
ATTTTAAGTTACCTGAGTATGATTTGAATTTGAAGAACAGTTAGTTCTGATTGAAAAAGACATTGATTC
AAAAGCCACATCTGATGACTCTCGCCAGTTAGACCATATCAACATGAATATTAATAAACTGTGACCAAT
AATATTTTTCAACCAGAAGTAATGGAAAGATCAAAGATGCAGGATATAGTACTTGAACAGGCTTTTTAA
GTATTCATCCTAAAAATGAGGCTGAGCACATAGAAAATGGGGCTAAGTTTCCGAATTTGGAGTCCATAAA
TAAGGTAATGGTCTTTGTGAGGACACTGCACCGTCTCCTGGTAGGGTTGAACCACAGAAGGCCAGTTCT
TCTGCTGACGTGGGCATTTCTAAAAGCAGCGAAGATCTATCTCCTCAGAGAAGTGGTCCAACCTGGAGCTG
TTGTGAAATCTCATAGTATAACTAACATGGAGACTGGAGGTTAAAAATCTATGACATTCTTGGTGTGA
TGGCCCTCAGCCGCAAGTGCAGCAGTAAAATCGCATCTGCTGTGGATGGGAAGAACATAGTCAGAAGC
AAGTCTGCCACACTGCTGTATGATCAGCCCTGCAGGTGTTCACTGCTGCCTCCTCATCTTCTGAGTTAC
TGTCAGGTACAAAGGCAGTTTTCAAGTTTGATTCAAAATCACACCCTGAAGAGCCAGATATAATAAGAGC
TGCCACAGTATCTGGCCACAGTCTACACCTCACCTGTATGGTCCCCACAATATAATGTCCAGTACAGT
GGCAGTGTACAGTGAAGACACCTTGTGGCACCTAACAGAATCCACAATAGATCCTGTGAGTTTTTCT
CTCCTCAGCGCCTTCAAGATCTGAGAGTGCAGAAAATCACAGTTATGCAAAGCATTCTGCCAACATGAA
TTTTCTTAACCATAACAATGTTAGAGCCAATACTGGATACCACTTACAACAGAGACTTGGCCACGCGAGG
CATGGAGAAATGTGGGCTATCTCCCGAATGACCGACTAGTGCCAGCAGTCACTCGGACTACTATTCAGA
GACAGAGTAGCGTGTCTTCAACGGCTTCTGTAATCTCGGTGACCCACAAAGGCGTACTGAAGGAGATTA
CTTATCGTACAGAGATTACATTCATGGGAAGAACTCCAGTCATGTCAGGATCAGAGAGACCTCTTTCT
GCACGAGCGTACAGCATCGATGGCCAAATACATCCAGGCCTCAGAGTGGCCGCTCCTCTATTAATGAAA
TACCAGAGAGAACTATGTCAGTTAGTGATTTCAATTACTCACGGACTAGTCTTCAAAAAGACCAATAC
AAGGGTCGGGTCTGAACATTCTCTGTTAGATCCTCCAGGAAAAAGCAAGGTTCTCATGACTGGCGGGAA
CAAGTACTACGACACATTGAGGCCAAAAGTTAGAAAAGAGTATGCTGTCAAGGTCCTTTAATCCAATC
TTACTGCTGTAAGCAGTTCTCACTATGGCAGCTTAGGGATCTGCATGGCAGCCAGGGCAGCCTTGCCTT
GAGTGTTCGACAGCGAAGAGGTTCTGGTGGGCACATTTTTCGACATCCGACAGACATCCAGTCCAGGAGAG
TGTTGCCAAGATGATAGATTCAATGTCAGAAGAGCAGAACCACCCATCAGGTGCACCTAGTCACAGAGGTC
TTCCAGACAGCCTGATGAAAATGCCTTTGAGTAATGGACAAAATGGCCAGCCTCTCAGGCCTCAGGCACA
TTATAGTCAAACCCATCACCCCTCAGGCATCTGTGGCAAGGCATCCCTCTAGAGAACAACATAATTGAT
TATTTGATGCTGAAAGTGGCCACCAGCCTCCATATACACATCCCATTGTTCTCCTAGACAAGGCCATG
AACTGGCAAAGCAAGAGATTCGAGTAAGAGTAGAAAAGGATCCAGAACTGGATTAGCATATCAGGAGG
TGTCGGCGGCAGAGGAAACCTTTTCAGACCTGATGATGATGGTATATTTGTAACAAGGGTACAACCTGAA
GGACCAGCATAAAATTACTACAGCCAGGAGATAAAAATTATTCAGGCTAATGGCTACAGTTTTATCAACA
TTGAACATGGGCAAGCGGTGTCCTTGTAAAAACTTTCCATAATGCAGTAGATCTCATCATTGTACGAGA
AGTTTTCTCA

ACGCGTACGCGGCCGCTCGAG – GFP Tag – GTTTAA

Protein Sequence: >MG221851 representing NM_001005868
 Red=Cloning site Green=Tags(s)

```

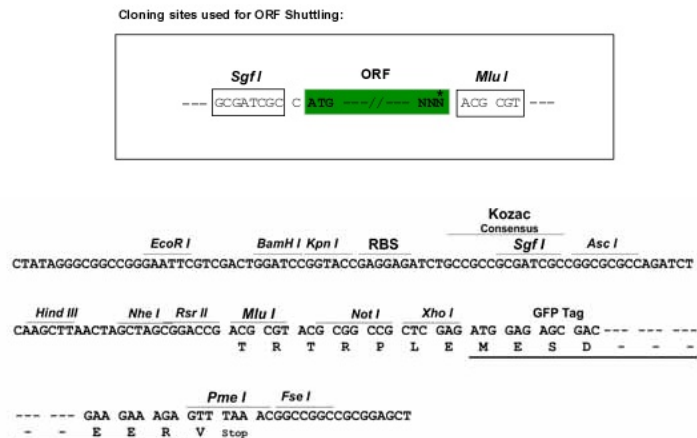
MTTKRSLFVRLVPCRCLRGEETVTTLDYSHCSLEQVPKEIFFEKTLEELYLDANQIEELPKQLFNCQS
LHKLSPDNDLTTLPASIANLINLRELDVSKNGIQEFPENIKNCKVLTIVEASVNPISKLPDGFSQLNL
TQLYLNDAFLEFLPANFGRLTKLQILELRENQLKMLPKTMNRLTQLERLDLGSNEFTEVPEVLEQLSGLR
EFWMDGNRLTFIPGFIGSLRQLTYLDVSKNNIEMVEEGISTCENLQDFLLSSNSLQQLPETIGSLKNVTT
LKIDENQLMYLPDSIGGLRSIEELDSCFNIEALPSSIGQLTNMRTFAADHNYLQQLPPEIGNWKNIIVL
FLHCNKLETLPEEMGDMQKLKVINLSDNRLKNLPSFTKLQQLTAMWLSDNQSKPLIPLQKETDTETQKM
VLTNMFPPQPRTEVDFISDNESFNPAWEEQRKQRAQVAFECDEKDEREAPPREGNLKRYPTYPDE
LKNMVKTQIVHRLKDEETNEESGRDLKHEDQVVKDKCVKTSSTTKSKLDEREKYMNSVQKMSSE
PEAETNGGNLPTASMKLSGNLKHIVNHDDVFESEELSSDEEMKMAEMRPPLIESSINQPKVVALSNNK
KDDAKDADSLSDEVTHNSNQNSNCSSPSRMSDSVSLNTDSSQDTSLSQSPVKQTPVDSNSKVRQEDENFN
SLLQNGVNLNNSPEEKFKINDKKDFKLPDYDLNIEEQVLIEKIDSKATSDDSRQLDHINMNINKLVTN
NIFQPEVMERSKMQDIVLGTGFLSIHPKNEAEHIENGAKFPNLESINKVNGLCEDTAPSPGRVPEQKASS
SADVGIKSTEDLSPQRSQPTGAVVKSHTITNMTGGLKIYDILGDDGPPSAAVKIASAVDGKNIIVRS
KSATLLYDQPLQVFTAASSSELLSGTKAVFKFDSNHNPEEPDIIRAATVSGPQSTPHLYGPPQYVQYS
GSATVKDTLWHPKQNPQIDPVSFPPQRLPRSESAENHSYAKHSANMFSNHNNVRANTGYHLQQLAPAR
HGEMWAI SPNDRLVPAVTRTTIQRQSSVSTASVNLGDPTRRTEGDYLSYRELHSMGRTPVMGSGRPLS
ARAYSIDGPNTSRPQSARPSINEIPERTMSVDFNYSRTSPSKRPNTRVGEHSLLDPPGKSKVPHDWRE
QVLRHIEAKKLEKSMLSRSFNSNLTAVSSSHYGSSRDHLGSGQLALSVADGRGSGGHIFRHPQTSSPGE
CCQDDRFMSEEQNHPSGALSHRGLPDSLMMKPLSNGQMGQPLRPQAHYSQTHPPQASVARHPSREQLID
YLMLKVAHQPPYTHPHCSPRQGHAKQEIRVRVEKDPELGFISGGVGRGNPFRPDDDGIFVTRVQPE
GPASKLLQPGDKIIQANGYSFINIEHGQAVSLLKTFHNAVLDLIIIVREVSS
  
```

TRTRPLE - GFP Tag - V

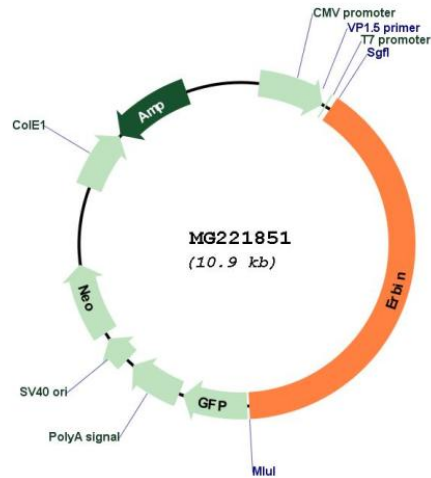
Restriction Sites:

SgfI-MluI

Cloning Scheme:



Plasmid Map:



ACCN: NM_001005868

ORF Size: 4350 bp

OTI Disclaimer: The molecular sequence of this clone aligns with the gene accession number as a point of reference only. However, individual transcript sequences of the same gene can differ through naturally occurring variations (e.g. polymorphisms), each with its own valid existence. This clone is substantially in agreement with the reference, but a complete review of all prevailing variants is recommended prior to use. [More info](#)

OTI Annotation: This clone was engineered to express the complete ORF with an expression tag. Expression varies depending on the nature of the gene.

Components: The ORF clone is ion-exchange column purified and shipped in a 2D barcoded Matrix tube containing 10ug of transfection-ready, dried plasmid DNA (reconstitute with 100 ul of water).

Reconstitution Method:

1. Centrifuge at 5,000xg for 5min.
2. Carefully open the tube and add 100ul of sterile water to dissolve the DNA.
3. Close the tube and incubate for 10 minutes at room temperature.
4. Briefly vortex the tube and then do a quick spin (less than 5000xg) to concentrate the liquid at the bottom.
5. Store the suspended plasmid at -20°C. The DNA is stable for at least one year from date of shipping when stored at -20°C.

RefSeq: [NM_001005868.2](#), [NP_001005868.1](#)

RefSeq Size: 6602 bp

RefSeq ORF: 4353 bp

Locus ID: 59079

UniProt ID: [Q80TH2](#)

Cytogenetics: 13 D1

Gene Summary: Acts as an adapter for the receptor ERBB2, in epithelia. By binding the unphosphorylated ERBB2 'Tyr-1248' receptor, it may contribute to stabilize this unphosphorylated state (By similarity). Inhibits NOD2-dependent NF-kappa-B signaling and proinflammatory cytokine secretion (PubMed:16203728).[UniProtKB/Swiss-Prot Function]