

## Product datasheet for **MG221846**

### Calcr (NM\_007588) Mouse Tagged ORF Clone

#### Product data:

Product Type:	Expression Plasmids
Product Name:	Calcr (NM_007588) Mouse Tagged ORF Clone
Tag:	TurboGFP
Symbol:	Calcr
Synonyms:	Clr; Ct-r
Mammalian Cell Selection:	Neomycin
Vector:	pCMV6-AC-GFP (PS100010)
E. coli Selection:	Ampicillin (100 ug/mL)



[View online »](#)

**ORF Nucleotide Sequence:**

>MG221846 representing NM\_007588  
 Red=Cloning site Blue=ORF Green=Tags(s)

TTTTGTAATACGACTCACTATAGGGCGGCCGGAATTCGTCGACTGGATCCGGTACCGAGGAGATCTGCC  
 GCC**CGCATCGCC**

ATGACTCCAAGGAGTCCAGAGTAAAAGCGGAAATCTCCGCAAACCGAAGATGAGGTTCTTCTCGTGA  
 ACAGGTTACCCCTGCTGCTCCTGCTCCTAGTGAGCCAACTCCAGTTCTTCAGGCTCCTACCAATCTCAC  
 TGA**CTCCGGCCTTGATCAGGAGCCATTCCTGTACTTGGTTGGCCGAAGAAGCTGCTGGATGCTCAGTAC**  
 AAATGCTATGACCGGATTCATCAGTTGCCCTCTTATGAAGGAGAAGGTCTGTACTGCAACCGCACCTGGG  
 ATGGCTGGATGTCTGGGACGACTCCCGCTGGAGCCACAGCCTATCAGCACTGCCCTGACTACTTCCC  
 GGACTTTGACACAGCAGAAAAGTTTCAAATACTGTGATGAAAATGGAGAGTGGTTTAGACACCCTGAC  
 AGCAACCGAACCTGGTCCAATACTCTGTGCAACGCTTTCCTTCTGAGAACTGCAAAATGCGTACG  
 TTCTTTATTACCTGGCTCTTGTGGTCACTCCTTGTGATTGCTGCTTTGGTTGCTTCCATGCTGATCTT  
 CTGGATTTTCAAGAACCTTAGCTGCCAGAGGGTGACCTTGCAAGCACATGTTCCCTTACTTATATTCTG  
 AATTCTATCATTATCATCATCCACTGGTTGAGGTTGTGCCAAATGGAGATCTGGTGCAGCGGGATCCTA  
 TGCATATTTTTATCATAACACACATATGTGGACAATGCAGTGGGAACTGTCACCACCCTTACCCCTGAG  
 TGCACACGAGGGAAGATGGACCCTCATGCCAGTGAAGTGATAAGTTGCAAGTTCTACACTTTTTACAT  
 CAGTACATGATGTCTTGA**ACTACTTCTGGATGCTCTGCGAGGGGATCTATCTTCATACTCTGATTGTCA**  
 TGGCTGTGTTTACCGACGAGCAACGCCTACGCTGGTACTATCTTCTTGGCTGGGGTTCCCGATAGTGCC  
 AACCATTACCACGCCATCACTCGTGCCCTCTACTACAACGACA**ACTGCTGGCTGAGTGCAGAAACCCAC**  
 TTGCTTTACATCATCCATGGACCCGTATGGTGGCTCTGGTGGTCAACTTCTTCTTCTTCTCAACATTG  
 TCCGCGTGCTTGTGACCAAGATGAGGCAAAACCCACGAGGCCGAGTCTACATGACTGAAGCGGTGAA  
 GGCCACCATGGTCTTGTGCCCTGCTGGGGATCCAGTTTGTGTGTTTCCCTGGAGGCCCTCCAACAAG  
 GTGCTTGGGAAGATCTATGATTATCTCATGCACTCTCTGATTCA**TTTCCAGGGATTCTTTGTGGCGACTA**  
 TCTACTGCTTCTGCAACCATGAGGTGCAAGTCA**CCCTGAAGCGCCAGTGGACGCAGTTCAAGATCCAGTG**  
 GAGCCAACGCTGGGAAGGCGCCGCCCCCAACCGCGTAGTTAGT**GCTCCTCGGGCTGTAGCCTTC**  
 GCTGAGCCAGATGGCCTCCCATTTACATCTGCCATCAGGAACCGGAATCCTCCAATCAGCAACAACG  
 AAGCGAGGAGAGTACTGAAATGATCCCATGAACGTCATCCAGCAAGACGCATCCGCT

**ACGCGTACGCGGCCGCTCGAG** – GFP Tag – GTTTAA

**Protein Sequence:**

>MG221846 representing NM\_007588  
 Red=Cloning site Green=Tags(s)

MTPRRSRVKRRNLRKPKMRFLLVNRFTLLLLLLVSPTPVLQAPTNLTD**SGLDQEPFLYL**VGRKKLLDAQY  
 KCYDRIHQ**LPSYEGEGL**YCNRTWDG**WMCWDDTP**AGATAYQHCPDYFPDFDTAEK**VSKYCDENGEWFRHPD**  
 SNRTWSNYTL**CNAFTSEKLQ**NAVLYLALVGHSL**SIAALVASMLIFWIFKNL**SCQRVTLHKHMFLTYIL  
 NSIIIIHLVEVVPNGDLVRRDPMHIFHHNTHMWT**MQWELSPPLPLSAHEG**KMDPHASEV**ISCKVLHFLH**  
 QYMMSCNYFWMLCEGIYLHTLIVMAVFTDEQRLRWYLLGWGF**IVPTIIHAITRALY**YNDNCWLSAETH  
 LLYIIHG**PVMVALVVNFFLLN**IVRVLTKMRQTHEAESY**MYLKAVKATMVLV**PLLGIQFVVFPWRPSNK  
 VLGKIYD**YLMHSLIHFQ**GFVATIYCFCNHEVQVTLKRQWTQFKIQ**WSQRWR**RRRPTNRVVSAPRAVAF  
 AEPDGLPIY**ICHQEPRNPPIS**NNEGEESTEMIPMN**VIIQQDASA**

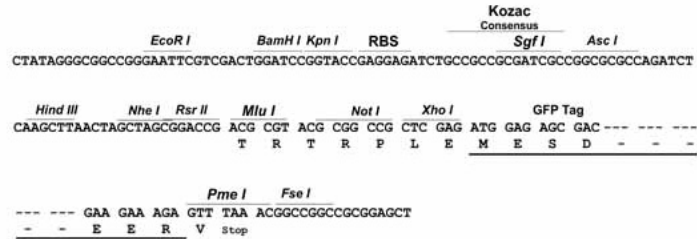
**TRTRPLE** – GFP Tag – V

**Restriction Sites:**

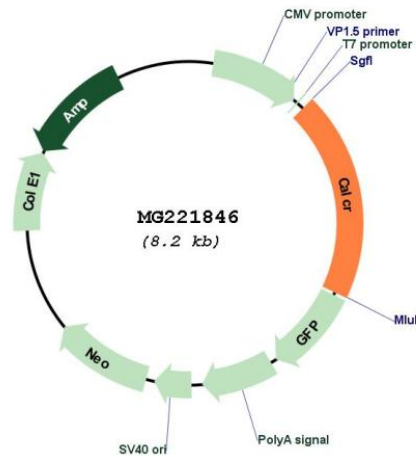
Sgfl-MluI

Cloning Scheme:

Cloning sites used for ORF Shutting:



Plasmid Map:



<b>ACCN:</b>	NM_007588
<b>ORF Size:</b>	1599 bp
<b>OTI Disclaimer:</b>	The molecular sequence of this clone aligns with the gene accession number as a point of reference only. However, individual transcript sequences of the same gene can differ through naturally occurring variations (e.g. polymorphisms), each with its own valid existence. This clone is substantially in agreement with the reference, but a complete review of all prevailing variants is recommended prior to use. <a href="#">More info</a>
<b>OTI Annotation:</b>	This clone was engineered to express the complete ORF with an expression tag. Expression varies depending on the nature of the gene.
<b>Components:</b>	The ORF clone is ion-exchange column purified and shipped in a 2D barcoded Matrix tube containing 10ug of transfection-ready, dried plasmid DNA (reconstitute with 100 ul of water).
<b>Reconstitution Method:</b>	<ol style="list-style-type: none"><li>1. Centrifuge at 5,000xg for 5min.</li><li>2. Carefully open the tube and add 100ul of sterile water to dissolve the DNA.</li><li>3. Close the tube and incubate for 10 minutes at room temperature.</li><li>4. Briefly vortex the tube and then do a quick spin (less than 5000xg) to concentrate the liquid at the bottom.</li><li>5. Store the suspended plasmid at -20°C. The DNA is stable for at least one year from date of shipping when stored at -20°C.</li></ol>
<b>RefSeq:</b>	<a href="#">NM_007588.2</a> , <a href="#">NP_031614.2</a>
<b>RefSeq Size:</b>	3831 bp
<b>RefSeq ORF:</b>	1602 bp
<b>Locus ID:</b>	12311
<b>UniProt ID:</b>	<a href="#">Q60755</a>
<b>Cytogenetics:</b>	6 1.81 cM
<b>Gene Summary:</b>	This is a receptor for calcitonin. The activity of this receptor is mediated by G proteins which activate adenylyl cyclase. The calcitonin receptor is thought to couple to the heterotrimeric guanosine triphosphate-binding protein that is sensitive to cholera toxin.[UniProtKB/Swiss-Prot Function]