

## Product datasheet for **MG221799**

### **Gne (NM\_001190414) Mouse Tagged ORF Clone**

#### **Product data:**

Product Type:	Expression Plasmids
Product Name:	Gne (NM_001190414) Mouse Tagged ORF Clone
Tag:	TurboGFP
Symbol:	Gne
Synonyms:	2310066H07Rik; DMRV; GLCNE; IBM2; NM; Uae1
Mammalian Cell Selection:	Neomycin
Vector:	pCMV6-AC-GFP (PS100010)
E. coli Selection:	Ampicillin (100 ug/mL)



[View online »](#)

ORF Nucleotide  
Sequence:

>MG221799 representing NM\_001190414  
 Red=Cloning site Blue=ORF Green=Tags(s)

TTTTGTAATACGACTCACTATAGGGCGGCCGGGAATTCGTCGACTGGATCCGGTACCGAGGAGATCTGCC  
 GCCCGCATCGCC

ATGGAGAAGAACGGGAACAACCGAAAGCTCCGGTTCGCTTGCCACCTGCAACCGAGCTGACTACTCCA  
 AACTGGCCCCGATCATGTTTCGGCATCAAGACAGAGCCCGGTTCTTTGAGTTGGACGTGGTGGTGCCTCGG  
 CTCCCACCTGATTGACGACTATGAAAACACATACCGCATGATTGAGCAAGATGACTTTGACATTAACACC  
 AGGCTCCACACGATTGTTAGAGGGGAAGATGAAGCGGCCATGGTAGAGTCGGTAGGCCTAGCGCTCGTGA  
 AGCTACCGGACGTCCTCAATCGCCTGAAGCCGACATCATGATTGTTACCGGAGACCGATTTGACGCCCT  
 TGCTCTGGCTACGCTGCTGCCTTGATGAACATCCGCATCCTTACATTGAAGGAGGCGAGGTGACGCGG  
 ACCATTGATGACTCTATCAGACACGCCATAACAAAAGTGGCTCACTACCATGTGTGCTGCACTAGAAGTG  
 CAGAGCAGCACCTGATCTCTATGTGCGAGGACCACGACCGCATCCTGTTGGCAGGCTGCCCTTCTATGA  
 CAAACTGCTCTCCGCAAGAACAAGACTATATGAGCATATTCCGGATGTGGCTAGCGGATGATGTAAAA  
 TGTAAGGATTACATCGTTGCCCTGCAGCATCCCGTGACCACTGACATTAAGCATTCCATAAAGATGTTTG  
 AGCTAACACTGGATGCCCTGATCTCGTTTAAACAAGAGGACCCTAGTTCTGTTTCCAAATATCGATGCAGG  
 CAGCAAGGAGATGGTTCGAGTGATGCGGAAGAAGGGCATCGAGCATCACCCCAATTTCCGTGCAGTCAAG  
 CACGTCCCCTTTGACCAGTTCATACAGCTGGTCCGCCACGCTGGCTGCATGATTGGGAATAGCAGCTGCG  
 GCGTGCGAGAGGTTGGCGCTTTCGGAACACCCGTGATCAACCTGGGCACAAGGCAGATAGGAAGAGAAAAC  
 CGGGGAGAATGTTCTTATGTGAGGGATGCTGACACCAAGATAAAAATTTGCAAGCACTACACCTCCAG  
 TTCGGCAAACAGTACCCTTGCTCAAAGATATATGGGGATGGGAATGCTGTTCCAAGGATTTTAAAGTTTC  
 TCAAATCCATTGACCTTCAAGAGCCACTACAGAAGAAATTCGCTTCCCCCTGTAAAGGAGAACATCTC  
 TCAAGACATTGACCACATCCTGGAAACTCTGAGTGCCTTGGCTGTTGATCTTGGCGGACAAACCTGAGG  
 GTGGCAATAGTTAGCATGAAGGGTGAATCGTTAAGAAGTACACTCAGTTCAACCCTAAAACCTATGAAG  
 AAAGGATTAGTTTAACTCCTGCAGATGTGTGGAAGCTGCCGCGGAAGCTGTGAAACTCAATTGCAGAAT  
 TCTGGGAGTAGGCATCTCCACAGGTGGCCGCGTGAATCCCAGGAAGGAGTTGTGCTGCATTCAACCAAG  
 CTGATCCAGGAATGAACTCCGTGGACCTCAGGACACCCCTCTCCGACACCCTGCATCTCCCCTGTGGG  
 TGGACAATGACGGCAACTGTGCCCCATGGCAGAGAGGAAGTTCGGCCAAGGAAAAGGACAGGAGAACTT  
 CGTGACGCTCATACGGGACAGGGATCGGTGGGGGATCATCCACCAGCAGAACTGATCCACGGCAGC  
 TCCTTCTGCGCGGCGGAGCTCGGCCATCTCGTGGTGTCCCTGGACGGTCTGACTGCTCCTGTGGAAGCC  
 ATGGGTGCATCGAAGCGTACGCCTCTGGAATGGCCTTGCAGAGGGAAGCAAGAAACTCCATGATGAGGA  
 CCTGCTCTTGGTGAAGGGATGTCAGTACCAAAAAGACGAAGCTGTGGGTGCCCTCCATCTCATCCAGGCT  
 GCCAAGCTGGGCAACGTGAAGGCCCAGAGCATCTTACGAACAGCTGGAAGTCTTTGGGACTTGGGGTTG  
 TGAACATCCTCCACACTATGAATCCTTCCCTGGTATCCTGTCTGGAGTCTGGCCAGTCACTACATCCA  
 CATCGTGAAGGACGTCATCCGCCAGCAAGCCTTGTCTCCGTGCAGGATGTGGACGTGGTGGTCTCAGAC  
 TTGGTGGACCCGGCCCTGCTTGGCGCAGCCAGCATGGTTCTGGACTACACAACCGCGCAGGATCCAC

ACGCGTACGCGGCCGCTCGAG - GFP Tag - GTTTAA

Protein Sequence: >MG221799 representing NM\_001190414  
 Red=Cloning site Green=Tags(s)

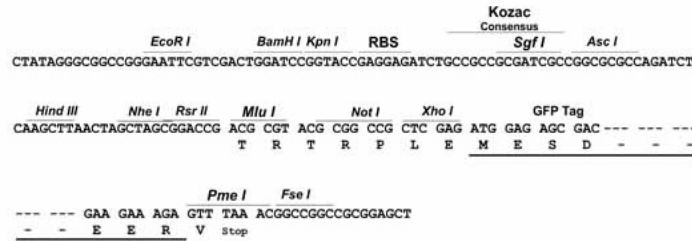
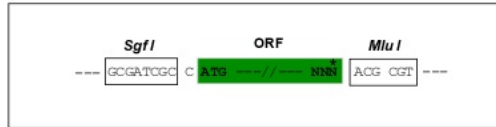
```
MEKNGNNRKLRCVATCNRADYSKLAPIMFGIKTEPAFFELDVVVLGSHLIDDYGNTYRMIEQDDFDINT
RLHTIVRGEDEAMVESVGLALVKLPDVLNRLKPDIMIVHGDRFDALALATSAALMNIRILHIEGGEVSG
TIDDSIRHAITKLAHYHVCCTRSAEQHLISMCEHDHRIILAGCPSYDKLLSAKNKDYMSIIRMWLGDDVK
CKDYIVALQHPVTTDIKHSIKMFELTDALISFNKRTLVLFPNIDAGSKEMVRVMRKKGIEHHPNFRAVK
HVPFDQFIQLVAHAGCMIGNSSCGVREVGAFGTPVINLGTQRQIGRETGENVLHVRDADTQDKILQALHLQ
FGKQYPCSKIYGDGNAVPRILKFLKSIDLQEPLQKFCFPVKENISQDIDHILETLSALAVDLGGTNLR
VAIVSMKGEIVKKYTQFNPKTYEERISLILQMCVEAAAEAVKLNCRILGVGISTGGRVNPQEGVVLHSTK
LIQEWNSVDLRTPLSDTLHLPVWVDNDGNCAAMAERKFGQGKQENFVTLITGTGIGGGIIHQHELIHGS
SFCAAELGHLVVSLDGPDCSCGSHGCIEAYASGMALQREAKKLHDEDLLEVEGMSVPKDEAVGALHLIQA
AKLGNVKAQSILRTAGTALGLGVNINLHTMNPSLVILSGVLASHYIHIVKDVIHQALSSVDVDDVVSD
LVDPALLGAASMLDYTTTRRIH
```

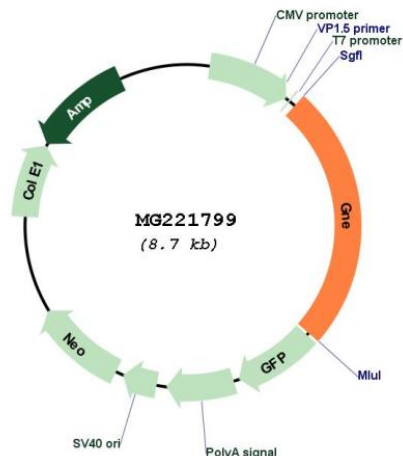
TRTRPLE - GFP Tag - V

Restriction Sites: SgfI-MluI

Cloning Scheme:

Cloning sites used for ORF Shutting:



**Plasmid Map:**


**ACCN:** NM\_001190414

**ORF Size:** 2166 bp

**OTI Disclaimer:** The molecular sequence of this clone aligns with the gene accession number as a point of reference only. However, individual transcript sequences of the same gene can differ through naturally occurring variations (e.g. polymorphisms), each with its own valid existence. This clone is substantially in agreement with the reference, but a complete review of all prevailing variants is recommended prior to use. [More info](#)

**OTI Annotation:** This clone was engineered to express the complete ORF with an expression tag. Expression varies depending on the nature of the gene.

**Components:** The ORF clone is ion-exchange column purified and shipped in a 2D barcoded Matrix tube containing 10ug of transfection-ready, dried plasmid DNA (reconstitute with 100 ul of water).

**Reconstitution Method:**

1. Centrifuge at 5,000xg for 5min.
2. Carefully open the tube and add 100ul of sterile water to dissolve the DNA.
3. Close the tube and incubate for 10 minutes at room temperature.
4. Briefly vortex the tube and then do a quick spin (less than 5000xg) to concentrate the liquid at the bottom.
5. Store the suspended plasmid at -20°C. The DNA is stable for at least one year from date of shipping when stored at -20°C.

**RefSeq:** [NM\\_001190414.2](#)

**RefSeq Size:** 2818 bp

**RefSeq ORF:** 2169 bp

Locus ID: 50798

UniProt ID: [Q91WG8](#)

Cytogenetics: 4 B1

**Gene Summary:** Regulates and initiates biosynthesis of N-acetylneuraminic acid (NeuAc), a precursor of sialic acids. Required for normal sialylation in hematopoietic cells (By similarity). Sialylation is implicated in cell adhesion, signal transduction, tumorigenicity and metastatic behavior of malignant cells. Plays an essential role in early development.[UniProtKB/Swiss-Prot Function]