

Product datasheet for **MG221798**

Kcng2 (NM_001190373) Mouse Tagged ORF Clone

Product data:

Product Type:	Expression Plasmids
Product Name:	Kcng2 (NM_001190373) Mouse Tagged ORF Clone
Tag:	TurboGFP
Symbol:	Kcng2
Synonyms:	AA591524
Mammalian Cell Selection:	Neomycin
Vector:	pCMV6-AC-GFP (PS100010)
E. coli Selection:	Ampicillin (100 ug/mL)



[View online »](#)

ORF Nucleotide Sequence:

>MG221798 representing NM_001190373
 Red=Cloning site Blue=ORF Green=Tags(s)

TTTTGTAATACGACTCACTATAGGGCGGCCGGAATTCGTCGACTGGATCCGGTACCGAGGAGATCTGCC
 GCC**CGGATCGCC**

ATGGCCCGGCTCCTGGGGCACCCGGAGGCCCCGACGCGGAGCCTGGCAGCGCAGGCCAGGGGCCGTG
 GCGGCCGCGGGGCCGGGCGCGCCACGTATTATCAACGTCGGGGGCTGCAGGGTGCCTGGCCTGGGC
 CGCGCTGGCCCGCTGTCCCTGGCGCGCCTCGAGCGCCTGCGAGCCTGCCGCGGCCACGACGAGCTGCTG
 CGCGTGTGTGACGACTACGACGTGAGCCGCGACGATTCTTTCGACCGCAGCCGTGCGCTTTCCGCG
 CCATCGTGGCGTGTGCGCGCCGGAAGCTAAGGCTGCTGCGCGGCCGTGCGCCCTGGCCTTCCGCGA
 CGAGCTGGCCTACTGGGGCATCGACGAGGCGGGCTGGAGCGTGTGCTGCGCCGCTGCGCCGCCG
 GAGGAGGAGGCCCGGAGGCCAGCGCCGCGAGCCCGCCGAGGGCCGCCGACGCCCCGGCCGAGCCC
 TGGGCAGCGGGCGGCTGGAGCGAGGCCGACAGCGCCTGCGCGACGTGGTGGAGAACCCTCCGGCT
 GCGGGCAGGCTCTTCGCTACGTCTCCGTGGCCTTCGTGGCCGTACAGCCGTGCGCTGTGCTGAGC
 ACCATGCCGACGTCCGCGCAGAAGAGGAACGGGGCGAGTGTCCACAAAGTGCCGCAACCTGTTCTGTG
 TGGAGACGGTGTGCGTGGCTGGTTCTCCTTCGAGTTCCTGTGCGCTCCCTGCAGGCTGAGAGCAAGT
 CGCCTTCTCCGACGCCGCTTGCCATCATCGACATCCTGGCCATCCTGCCCTTCTACGTGTGCTGCTC
 GCGGGACTGGCGGAGGGCCACGGGCAGCAAGATGCTGGAGCGCGGGTCTGGTGTGCGGCTGCTG
 GGGCGTGCCTGTCTACGTGATGCGCTGGCGGCCACTCGTTGGGGTGCCTGCTGCTGGCCTCAC
 CGTGGCCGCTGCGCACGCGAGTTCGGACTGCTGCTGCTTCTCCTGCTGCGTGGCCATGGCGCTTTCGCG
 CCGCTCGTGCACCTGGCTGAGCGCGAGCTGGGCGCTCACCGGACTTCTCCAGCGTCCCCGCCAGTACT
 GGTGGGAGTCACTCCATGACCACCGTGGCTATGGAGACATGGTGGCGCGAGCCTCCGGCCAGGTT
 GGTGGCGCTGAGCAGCATCCTCAGCGGCATCCTGCTCATGGCCTCCCTGTCACCTCCATCTTCCACACC
 TTCTCGCGCTCCTATTCCGAGCTCAAGGAGCAGCAACAGCGCGGCCAGCCCTGAACCGCCCTGCGCG
 AGGACAGCACGCGTGTGACAGTACAGTTCGGCCAGCGCCACTGAGGACAGCTCTCAGGACCTGAGAC
 CGCAGGCGCGGCAGGAGCTTGCCGGGCCGGTGGGACCC

AG**CGGACCG**ACGCGTACGCGGCCGCTCGAG - GFP Tag - GTTTAA

Protein Sequence:

>MG221798 representing NM_001190373
 Red=Cloning site Green=Tags(s)

MARLLGHPEAPDAEPGSAGRRRGRGRARARHVIINVGGCRVRLAWAALARCPLARLERLRACRGHDELL
 RVCDDYDYSRDEFFFDSPCAFRAIVALLRAGKLRLLRGPCALAFRDELAYWGIDEARLERCCLRRLRRR
 EEEAAEASAAQPARGPPTSPGRALGSGRLERGRQRLRDVVENPHSGLAGRLFAYVSVAFVAVTAVGLCLS
 TMPDVRAEEEREGECSTKCRNLFVLETVCVAVWFSEFLLRSLQAESKCAFLRTPLAIIIDILAILPFVYVSL
 AGLAAGPTGSKMLERAGLVLRLLRALRVLYVMRLARHSLGLRSLGLTVRRCAREFLLLLFLCVAMALFA
 PLVHLAERELGAHRDFSSVPASYWAVISMVTVGYDMVPRSLPGQVVALSSILSGILLMAFPVTSIFHT
 FRSYSELKEQQRAASPEPALREDSTRDDSTRSASATEDSSQDPETAGAAGSLPGRVGP

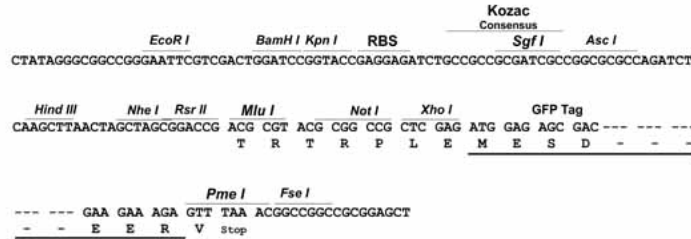
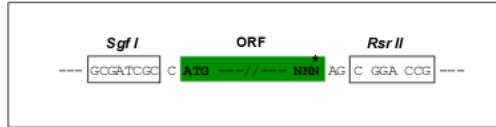
SGP**TRRRLE** - GFP Tag - V

Restriction Sites:

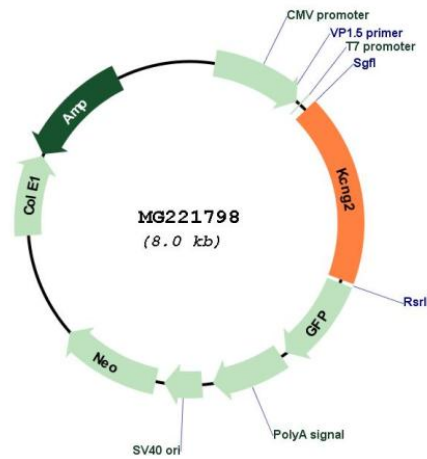
Sgfl-RsrII

Cloning Scheme:

Cloning sites used for ORF Shuttling:



Plasmid Map:



ACCN: NM_001190373

ORF Size: 1440 bp

OTI Disclaimer: The molecular sequence of this clone aligns with the gene accession number as a point of reference only. However, individual transcript sequences of the same gene can differ through naturally occurring variations (e.g. polymorphisms), each with its own valid existence. This clone is substantially in agreement with the reference, but a complete review of all prevailing variants is recommended prior to use. [More info](#)

OTI Annotation: This clone was engineered to express the complete ORF with an expression tag. Expression varies depending on the nature of the gene.

Components: The ORF clone is ion-exchange column purified and shipped in a 2D barcoded Matrix tube containing 10ug of transfection-ready, dried plasmid DNA (reconstitute with 100 ul of water).

Reconstitution Method:

1. Centrifuge at 5,000xg for 5min.
2. Carefully open the tube and add 100ul of sterile water to dissolve the DNA.
3. Close the tube and incubate for 10 minutes at room temperature.
4. Briefly vortex the tube and then do a quick spin (less than 5000xg) to concentrate the liquid at the bottom.
5. Store the suspended plasmid at -20°C. The DNA is stable for at least one year from date of shipping when stored at -20°C.

RefSeq: [NM_001190373.1](#), [NP_001177302.1](#)

RefSeq Size: 2815 bp

RefSeq ORF: 1443 bp

Locus ID: 240444

Cytogenetics: 18 E3