

Product datasheet for **MG221794**

Ptprr (NM_001161839) Mouse Tagged ORF Clone

Product data:

Product Type:	Expression Plasmids
Product Name:	Ptprr (NM_001161839) Mouse Tagged ORF Clone
Tag:	TurboGFP
Symbol:	Ptprr
Synonyms:	Gmcp1; mPTP213; PTP-SL; PTPBR7; RPTPRR
Mammalian Cell Selection:	Neomycin
Vector:	pCMV6-AC-GFP (PS100010)
E. coli Selection:	Ampicillin (100 ug/mL)



[View online »](#)

ORF Nucleotide
Sequence:

>MG221794 representing NM_001161839
 Red=Cloning site Blue=ORF Green=Tags(s)

TTTTGTAATACGACTCACTATAGGGCGGCCGGAATTCGTCGACTGGATCCGGTACCGAGGAGATCTGCC
 GCCGCGATCGCC

ATGAGGAGAGCGGTCCGCTTCCCTGCGCTGTGCCTGCTTCTTAATCTTCATGCTGCAGGTTGTTTTCCA
 GAAACAATGATCACTTTTTGGCTATTCGTCAAAAGAAGAGTTGGAAGCCGGTGTTTATGACCATT
 ACAGGATATCAAGAAGAGCCTGGACATCGCACAAGAGGCATACAAACATAACTACCACTCCCTCCGAA
 GTTCAAATAAGCAAACATCACCAGATTATAATTCAGCATTTCCTAGACCTGCATATGACCCGTCTCTTA
 ATCTGTTGGCTGAGTCTGATCAAGATCTTGAAATAGAAAATCTCCAATTCAGCAGCAAATGTGATTGT
 GGTGACACTGCAAATGGATATAACCAAGCTGAACATAACCCTGCTTCGGATCTTCGCCAAGGAGTAGCT
 GCAGCCCTGGGACTTTACCTCAGCAAGTGCACATTAACCGGCTCATTGAAAAGAAGAACCAGGTTGAGT
 TGTTTGTGTCTCCCGAAACCGAAACAGGAGAAACCGAGCCCTGCAGGCTGAGGAAGTCTGCGTTC
 CCTCAATGTGGATGGTTGCATCAGAGTTTACCACAGTTTGAATTACAGACGTCGCCCCGAGAAAAAT
 GTTTTACAAGGGCAGCACGAAGCAGACAAGATCTGGAGCAAAAGAAGGATTTACGCTGTCGTCATCTTC
 TCAGCATCTTTATCATATAGTAACCTGTTTGATGATTATTTACAGGTTAAAAGAAGGCTTCAGCTTTC
 CTTAAGACAAGATAAAGAGAAAAACCAGGAGATCCACCTATCACCTATGCACGGCAGCAAGCACAATCG
 GAGGCCAAGACGACCCACAGCATGGTCCAGCCGATCAGGCGCCAAGGTGCTGAACGTGGTTGTGGACC
 CTCAAGGCCAATGCACCTCTGAGATTCGAAACAGCACCTCCACCTCTGTCTGCCCTTCTCCCTCAGAAT
 GAAGCCCATAGGACTCCAGGAGCGACGAGGTTCCAATGTATCTCTTACGCTGGACATGAGTAGCCTGGGC
 AGTGTGGAACCCTTTGTGGCCGTCTCAACCCCGGGAGAAGGTAGCCATGGAATACCTGCAGTCAGCCA
 GCCGAGTTCTCACACGGTCACAGCTGAGGGACGTCGTGGCAAGTCCCACCTACTTCAAAGTGAATTCAT
 GGAAATACCAATGAATTTTGTGGATCCCAAAGAAATTGATATTCCACGTCACGGAACAAAAATCGTTAT
 AAGACCATTTTGCCAAATCCCCTCAGCAGAGTGTGCTTAAGACCAAAAAATATAACCGATTCTTGAGTA
 CTTACATAAAATGCTAACTATATTCGGGGCTACAGTGGTAAGGAGAAAGCCTTCATTGCCACCCAGGGCCC
 CATGATCAACACTGTGAATGACTTCTGGCAGATGGTGTGGCAAGAAGACAGTCCCGTGATTGTGATGATC
 ACGAAACTCAAAGAGAAAAATGAGAAATGTGTGCTCTACTGGCCAGAAAAGAGAGGGATTACGGCAAGG
 TTGAGTTCTGGTCACCGGTGTGACCGAATGTGATAACTACACCATCCGCAACCTCGTCTTAAAGCAAGG
 AAGTCACACCCAACATGTGAAGCACTACTGGTACACTTCATGGCCGGATCATAAGACTCCAGACAGTGCC
 CAGCCCCCTCTGCAGCTCATGTTGGATGTGGAAGAAGACAGACTGGCCTCTGAAGGCCGAGGGCCTGTGG
 TTGTCCACTGCAGTGCAGGGATTGGGAGAACTGGGTGTTTCATCGCTACATCCATTGGCTGTCAACAATT
 GAAAGAAGAAGGAGTTGTAGACGCACTAAGTATTGTCTGCCAGCTTCGTGTAGACAGGGGTGGTATGGTC
 CAAACCAGCGAGCAGTATGAATTTGTGCACCATGCTCTGTGCCTGTTTCGAGAGCAGACTTTCACCAGAAA
 CTGTCGAG

ACGCGTACGCGGCCGCTCGAG – GFP Tag – GTTTAA

Protein Sequence: >MG221794 representing NM_001161839
 Red=Cloning site Green=Tags(s)

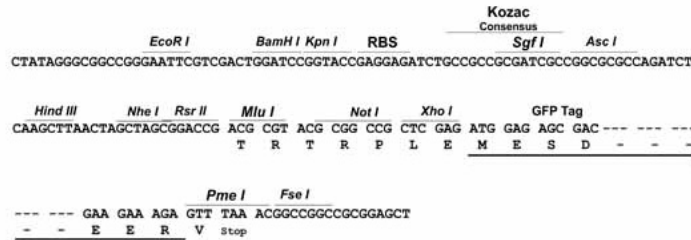
MRRAVGFPALCLLLNLHAAGCFSRNDHFLAIRQKKSWKPVFIYDHSQDIKSLDIAQEAYKHNYHSPSE
 VQISKHHQIINSAFPRPAYDPSLNLLAESDQDLEIENLPIAANVIVVTLQMDITKLNITLLRIFRQGVA
 AALGLLPQVHINRLIEKKNQVELFVSPGNRKPGETQALQAEVLRSLNVDGLHQSLPQFGITDVAPEKN
 VLQGQHEADKIWSKEGFYAVVIFLSIFIIIVTCLMIIYRLKERLQLSLRQDKEKNQEIHLSPIARQQAQS
 EAKTTHSMVQPDQAPKVLNVVVDPOGQCTPEIRNSTSTSVCPSPFRMKPIGLQERRGSNVSLTLDMSLGLG
 SVEPFVAVSTPREKVAMEYLQASRVLTRSQLRDVAVSSHLLQSEFMEIPMNFVDPKEIDIPRHGTKNRY
 KTILPNPLSRVCLRPKNITDSLSTYINANYIRGYSKKEKAFIATQGPMINTVNDWFQMVWQEDSPVIVMI
 TKLKEKNEKCVLYWPEKRGYGVKVEVLVTGVTEDNYTIRNLVLKQGSHTQHVKHYYWTSWPDHKTPDSA
 QPLLQLMLDVEEDRLASEGRPVVVHCSAGIGRTGCFIATSIGCQQLKEEGVVDALSIVCQLRVDRGMV
 QTSEQYEFVHHALCLFESRLSPETVE

TRTRPLE - GFP Tag - V

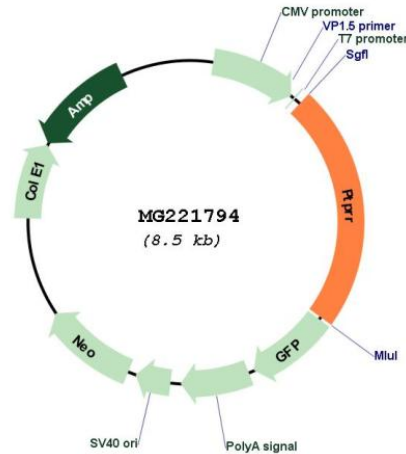
Restriction Sites: SgfI-MluI

Cloning Scheme:

Cloning sites used for ORF Shuttling:



Plasmid Map:



ACCN: NM_001161839

ORF Size: 1236 bp

OTI Disclaimer: The molecular sequence of this clone aligns with the gene accession number as a point of reference only. However, individual transcript sequences of the same gene can differ through naturally occurring variations (e.g. polymorphisms), each with its own valid existence. This clone is substantially in agreement with the reference, but a complete review of all prevailing variants is recommended prior to use. [More info](#)

OTI Annotation: This clone was engineered to express the complete ORF with an expression tag. Expression varies depending on the nature of the gene.

Components: The ORF clone is ion-exchange column purified and shipped in a 2D barcoded Matrix tube containing 10ug of transfection-ready, dried plasmid DNA (reconstitute with 100 ul of water).

Reconstitution Method:

1. Centrifuge at 5,000xg for 5min.
2. Carefully open the tube and add 100ul of sterile water to dissolve the DNA.
3. Close the tube and incubate for 10 minutes at room temperature.
4. Briefly vortex the tube and then do a quick spin (less than 5000xg) to concentrate the liquid at the bottom.
5. Store the suspended plasmid at -20°C. The DNA is stable for at least one year from date of shipping when stored at -20°C.

RefSeq: [NM_001161839.1](#), [NP_001155311.1](#)

RefSeq Size: 2508 bp

RefSeq ORF: 1239 bp

Locus ID: 19279

UniProt ID: [Q62132](#)

Cytogenetics: 10 D2

Gene Summary: Sequesters mitogen-activated protein kinases (MAPKs) such as MAPK1, MAPK3 and MAPK14 in the cytoplasm in an inactive form. The MAPKs bind to a dephosphorylated kinase interacting motif, phosphorylation of which by the protein kinase A complex releases the MAPKs for activation and translocation into the nucleus. Isoform gamma may have a role in patterning and cellular proliferation of skeletal elements in the precartilaginous/cartilaginous skeleton.[UniProtKB/Swiss-Prot Function]