

## Product datasheet for **MG221793**

### **Ptprr (NM\_001161838) Mouse Tagged ORF Clone**

#### **Product data:**

Product Type:	Expression Plasmids
Product Name:	Ptprr (NM_001161838) Mouse Tagged ORF Clone
Tag:	TurboGFP
Symbol:	Ptprr
Synonyms:	Gmcp1; mPTP213; PTP-SL; PTPBR7; RPTPRR
Mammalian Cell Selection:	Neomycin
Vector:	pCMV6-AC-GFP (PS100010)
E. coli Selection:	Ampicillin (100 ug/mL)



[View online »](#)

ORF Nucleotide  
Sequence:

>MG221793 representing NM\_001161838  
Red=Cloning site Blue=ORF Green=Tags(s)

TTTTGTAATACGACTCACTATAGGGCGGCCGGGAATTCGTCGACTGGATCCGGTACCGAGGAGATCTGCC  
GCCGCGATCGCC

ATGAGGAGAGCGGTCCGCTTCCCTGCGCTGTGCCTGCTTCTTAATCTTCATGCTGCAGGTTGTTTTCCA  
GAAACAATGATCACTTTTTGGCTATTCGTCAAAAGAAGAGTTGGAAGCCGGTGTTTATGACCATTC  
ACAGGATATCAAGAAGAGCCTGGACATCGCACAAGAGGCATACAAACATAACTACCACTCCCCTCCGAA  
GTTCAAATAAGCAAACATCACCAGATTATTAATTCAGCATTTCCTAGACCTGCATATGACCCGTCTCTTA  
ATCTGTTGGCTGAGTCTGATCAAGATCTTGAAATAGAAAATCTCCAATTCAGCAGCAAATGTGATTGT  
GGTGACACTGCAAATGGATATAACCAAGCTGAACATAACCCTGCTTCGGATCTTCCGCCAAGGAGTAGCT  
GCAGCCCTGGGACTCTTACCTCAGCAAGTGCACATTAACCGGCTCATTGAAAAGAAGAACCAGGTTGAGT  
TGTTTGTGTCTCCCGAAACCGAAACAGGAGAAACCGAGGCCCTGCAGGCTGAGGAAGTCTGCGTTC  
CCTCAATGTGGATGGTTTGCATCAGAGTTTACCACAGTTTGAATTACAGACGTCGCCCCGAGAAAAAT  
GTTTTACAAGGGCAGCACGAAGCAGACAAGATCTGGAGCAAAGAAGGATTTACGCTGTCGTCATCTTCC  
TCAGCATCTTTATCATATAGTAACCTGTTTGATGATTATTTACAGGTTAAAAGAAGGCTTCAGCTTTC  
CTTAAGACAAGATAAAGAGAAAAACCAGGAGATCCACCTATCACCATTCAGCAGGAGCAAGCACAATCG  
GAGGCCAAGACGACCCACAGCATGGTCCAGCCGATCAGGCGCCAAGGTGCTGAACGTGGTTGTGGACC  
CTCAAGGCCAATGCACCTCTGAGATTCGAAACAGCACCTCCACCTCTGTCTGCCCTTCTCCCTTCAGAA  
GAAGCCCATAGGACTCCAGGAGCGACGAGGTTCCAATGTATCTCTTACGCTGGACATGAGTAGCCTGGGC  
AGTGTGGAACCCTTTGTGGCCGTCTCAACCCCGGGAGAAGGTAGCCATGGAATACCTGCAGTCAGCCA  
GCCGAGTTCTCACACGGTCACAGCTGAGGGACGTCGTGGCAAGTCCCACCTACTTCAAAGTGAATTCAT  
GGAAATACCAATGAATTTTGTGGATCCCAAAGAAATTGATATTCCACGTCACGGAACAAAAATCGTTAT  
AAGACCATTTTGCCAAATCCCCTCAGCAGAGTGTGCTTAAGACCAAAAAATATAACCGATTCCCTTGAGTA  
CTTACATAAAATGCTAACTATATTCGGGGCTACAGTGGTAAGGAGAAAGCCTTCATTGCCACCCAGGGCCC  
CATGATCAACACTGTGAATGACTTCTGGCAGATGGTGTGGCAAGAAGACAGTCCCCTGATTGTGATGATC  
ACGAAACTCAAAGAGAAAAATGAGAAATGTGTGCTCTACTGGCCAGAAAAGAGAGGGATTACGGCAAGG  
TTGAGTTCTGGTCACCGGTGTGACCGAATGTGATAACTACACCATCCGCAACCTCGTCTTAAAGCAAGG  
AAGTCACACCCAAACATGTGAAGCACTACTGGTACACTTCATGGCCGGATCATAAGACTCCAGACAGTGCC  
CAGCCCCCTCTGCAGCTCATGTTGGATGTGGAAGAAGACAGACTGGCCTCTGAAGGCCGAGGGCCTGTGG  
TTGTCCACTGCAGTGCAGGGATTGGGAGAACTGGGTGTTTCATCGCTACATCCATTGGCTGTCAACAATT  
GAAAGAAGAAGGAGTTGTAGACGCACTAAGTATTGTCTGCCAGCTTCGTGTAGACAGGGGTGGTATGGTC  
CAAACCAGCGAGCAGTATGAATTTGTGCACCATGCTCTGTGCCTGTTTCGAGAGCAGACTTTCACCAGAAA  
CTGTGCGAG

ACGCGTACGCGGCCGCTCGAG – GFP Tag – GTTTAA

Protein Sequence: >MG221793 representing NM\_001161838  
 Red=Cloning site Green=Tags(s)

MRRAVGFPALCLLLNLHAAGCFSRNDHFLAIRQKKSWKPVFIYDHSQDIKSLDIAQEAYKHNYHSPSE  
 VQISKHHQIINSAFPRPAYDPSLNLLAESDQDLEIENLPIAANVIVVTLQMDITKLNITLLRIFRQGVA  
 AALGLLPQVHINRLIEKKNQVELFVSPGNRKPGETQALQAEVLRSLNVDGLHQSLPQFGITDVAPEKN  
 VLQSQHEADKIWSKEGFYAVVIFLSIFIIIVTCLMIIYRLKERLQLSLRQDKEKNQEIHLSPIARQQAQS  
 EAKTTHSMVQPDQAPKVLNVVDPQGQCTPEIRNSTSTSVCPSPFRMKPIGLQERRGSNVSLTLDMSLGLG  
 SVEPFVAVSTPREKVAMEYLQASRVLTRSQLRDVAVSSHLLQSEFMEIPMNFVDPKEIDIPRHGTKNRY  
 KTILPNPLSRVCLRPKNITDSLSTYINANYIRGYSKKEKAFIATQGPMINTVNDWFQMVWQEDSPVIVMI  
 TKLKEKNEKCVLWPEKRGYGVKVEVLVTGVTEDNYTIRNLVLKQGSHTQHVKHYYWTSWPDHKTPDSA  
 QPLLQLMLDVEEDRLASEGRPVVVHCSAGIGRTGCFIATSIGCQQLKEEGVVDALSIVCQLRVDRGMV  
 QTSEQYEFVHHALCLFESRSPETVE

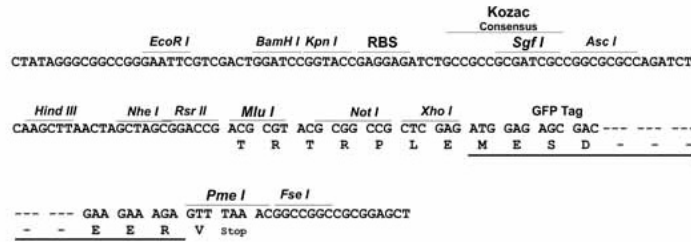
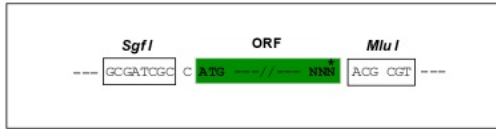
TRTRPLE - GFP Tag - V

Restriction Sites:

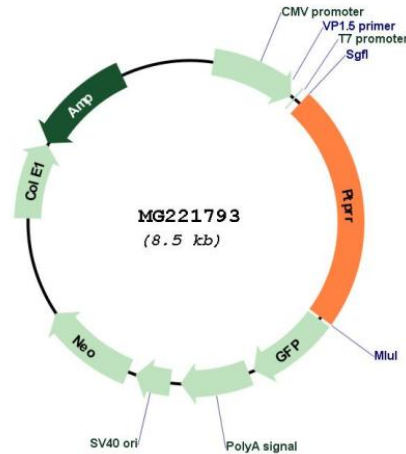
Sgfl-MluI

Cloning Scheme:

Cloning sites used for ORF Shuttling:



## Plasmid Map:



ACCN: NM\_001161838

ORF Size: 1236 bp

OTI Disclaimer: The molecular sequence of this clone aligns with the gene accession number as a point of reference only. However, individual transcript sequences of the same gene can differ through naturally occurring variations (e.g. polymorphisms), each with its own valid existence. This clone is substantially in agreement with the reference, but a complete review of all prevailing variants is recommended prior to use. [More info](#)

OTI Annotation: This clone was engineered to express the complete ORF with an expression tag. Expression varies depending on the nature of the gene.

Components: The ORF clone is ion-exchange column purified and shipped in a 2D barcoded Matrix tube containing 10ug of transfection-ready, dried plasmid DNA (reconstitute with 100 ul of water).

Reconstitution Method:

1. Centrifuge at 5,000xg for 5min.
2. Carefully open the tube and add 100ul of sterile water to dissolve the DNA.
3. Close the tube and incubate for 10 minutes at room temperature.
4. Briefly vortex the tube and then do a quick spin (less than 5000xg) to concentrate the liquid at the bottom.
5. Store the suspended plasmid at -20°C. The DNA is stable for at least one year from date of shipping when stored at -20°C.

RefSeq: [NM\\_001161838.1](#), [NP\\_001155310.1](#)

RefSeq Size: 2817 bp

RefSeq ORF: 1239 bp

Locus ID: 19279

UniProt ID: [Q62132](#)

Cytogenetics: 10 D2

**Gene Summary:** Sequesters mitogen-activated protein kinases (MAPKs) such as MAPK1, MAPK3 and MAPK14 in the cytoplasm in an inactive form. The MAPKs bind to a dephosphorylated kinase interacting motif, phosphorylation of which by the protein kinase A complex releases the MAPKs for activation and translocation into the nucleus. Isoform gamma may have a role in patterning and cellular proliferation of skeletal elements in the precartilaginous/cartilaginous skeleton.[UniProtKB/Swiss-Prot Function]