

Product datasheet for **MG221753**

Gm14391 (NM_001099308) Mouse Tagged ORF Clone

Product data:

Product Type:	Expression Plasmids
Product Name:	Gm14391 (NM_001099308) Mouse Tagged ORF Clone
Tag:	TurboGFP
Symbol:	Gm14391
Synonyms:	OTTMUSG00000016543
Mammalian Cell Selection:	Neomycin
Vector:	pCMV6-AC-GFP (PS100010)
E. coli Selection:	Ampicillin (100 ug/mL)



[View online »](#)

ORF Nucleotide Sequence:

>MG221753 representing NM_001099308, **codon optimized**.
Due to the complexity of NM_001099308, the ORF clone is codon optimized for mammalian Expression.
The nucleotide sequence differs from the reference sequence, yet the amino acid sequence remains identical.

Red=Cloning site Blue=ORF Green=Tags(s)

TTTTGTAATACGACTCACTATAGGGCGCCGGGAATTCGTCGACTGGATCCGGTACCGAGGAGATCTGCC
 GCC**CGGATCGC**C

ATGGATCTTGTCACTTACGACGATGTCCAAGTTAATTTCACCAGGACGAATGGGCCCTGTTGGATCCAT
 CTCAGAAAAGTCTTTATAAGGACGTCATGCTCGAAACATACAGAACTTGACAGCCATCGGCTATATCTG
 GGAAGAACACACTATCGAGGATCATTTCCAACGTCCCGCTCCCATGGGAGGCACGAAAGATCTTGCTCT
 GCCGAGCAGCCATCTGAATTCATTCACTGCGGCAAGGCCCTTTGCTTATGAGTCCGGTCGACAGCGCCACC
 AGATCAAGCACAACGGAGAGAAGCATCATGACTGCAATCAGTGTGGAAAGGATTTCCGGACGTGGAATGT
 ACTGCAGATCCATAAGCGCACCCACCCGGAGAAAAGCCATACGATTGTAACAGTGTGGCAAGGCTTTC
 GCGAGGCTTGTACCTTCAAATTCACAACAGAACCCACGAGGGGAGAAAACAGTATGAATGTAACCCAGT
 GTGGGAAGGCCCTGAAACGGCGAAGCGACTTGCAAATTCACAAGCGGACTCATACTGGCGAGAAGCCTTA
 TGAGTGAACCAATGTGGAAAAGCTTTTGTAGCTCCGGCGACCTCCAACAGCACAAGAGGACACACACC
 GGTGAGAAGCCCTACGAGTGTAGCAGTGTGGTAAGGCCCTTCCGAGTGTCTCACATCTGAGAATACACA
 AGCGGACACACAGGCGAGAAGCCTTATGAGTGAAGCAATGCGGAAAAGGCTTTTCGCTCACAGTCCCA
 CCTTACAAGCATGAAAGGACTCACACCGGCGACAAACCCTATGAATGCAATCAATGCGGAAAAGCTTTC
 CGGGTGATCTATACACTGCAGATGCATAAAAGGACACACACTGGCGACAAACCCTATGAGTGAATCAGT
 GCGGCAAGGCATTGCTGTTATATACACTCCAGATGCACAAGAGGACACACACCGGTGACAAGCCCTA
 CGAATGAATCAGTGGGAAAAGGCCCTTCGCGGTGATCTACACTTTGCAACGCCACAAGCAGACTCACACT
 GGTGAGAAGCCATAACAAGTGAACAGTGGGAAAAGGCTTTACCCGGTCTTGTCTATCTCCGGATACACA
 AAAGAACTCACACTGGAGAAAACCTTACGAATGCAACCAATGTGGTAAGGCCTTCGCTAGAAGCGGTGA
 CCTGCAGAAAACACAAGAGAACACACACCCGGTGAAGCCATATGAGTGAACAGTGGGCAAGGCTTTT
 GCCCACAGTTCTACCTCATAAACACGAGCGCACACATACTGGAGATAAGCCCTATGAATGTAATCAGT
 GCGGCAAGCCTTCGCCGAGTCTAGCACCTGCAGATACATAATCGAACACATACCGGTGAGAAGCCATA
 TGAGTGAACCCAGTGGGCAAGGCATTCATCACCCGGCGGGTACTGCAGATACACAAGAGGACCCATACT
 GGGGAGAAGCCATATGAATGCAACAATGCGGAAAAGCGTTTGCCTCCTCTGATCTTCAAGAGCACA
 AGCGGACCCACAGTGGAGCCAAACCCTATGAGTGAAGCAATGTGGAAAAGCCTTCGCCAGTCAAGCCA
 CTTGCCATACATAAGCAGACACACACTGGGCAAGGCCCTTATGAGTGAAT

ACGCGTACGCGGCCGCTCGAG – GFP Tag – GTTTAA

Protein Sequence:

>MG221753 representing NM_001099308
 Red=Cloning site Green=Tags(s)

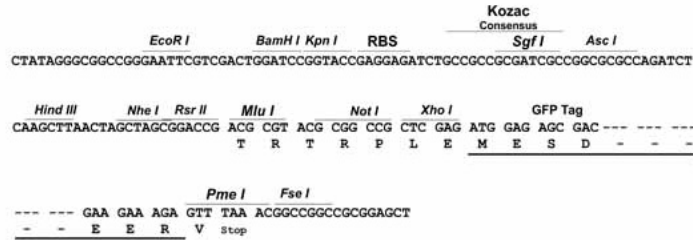
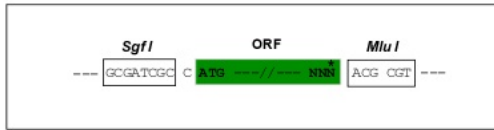
MDLVTYDDVQVNFQDEWALLDPSQKSLYKDVMLETYRNLTAIGYIWEETHIEDHFQTSRSHGRHERSCS
 AEQPSEFIQCGKAFAYESGRQRHQIKHNGEKHHDCNQCGKDFRTWVNLQIHKRTHTEKPYDCKQCGKVF
 ARSCHLQIHNRTHAGEKQYECNQCGKALKRRSDLQIHKRTHTEKPYECNQCGKAFASSGDLQQHKRTHTE
 GEKPYECKQCGKAFSECSHLRIHKRTHTEKPYECKQCGKAFHSSHLHKHERTHTGDKPYECNQCGKAF
 AVIYTLQMHKRTHTGDKPYECNQCGKAFVIYTLQMHKRTHTGDKPYECNQCGKAFVIYTLQRHKQTHTE
 GEKPYKCKQCGKAFTRSCHLRIHKRTHTEKPYECNQCGKAFARSGDLQKHKRTHTGEKPYECKQCGKAF
 AHSSHLHKHERTHTGDKPYECNQCGKAFAESSTLQIHNRTHTGEKPYECNQCGKAFITRRVLQIHKRTHTE
 GEKPYECKQCGKAFASSDLQKHKRTHTSGAKPYECKQCGKAFQSSHLRIHKQTHTEGERPYECN

TRTRPLE – GFP Tag – V

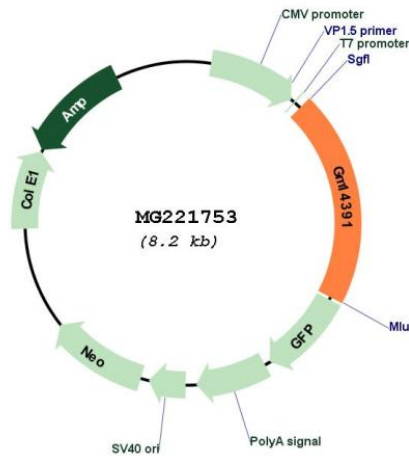
Restriction Sites: Sgfl-MluI

Cloning Scheme:

Cloning sites used for ORF Shutting:



Plasmid Map:



ACCN: NM_001099308

ORF Size: 1662 bp

OTI Disclaimer:	The molecular sequence of this clone aligns with the gene accession number as a point of reference only. However, individual transcript sequences of the same gene can differ through naturally occurring variations (e.g. polymorphisms), each with its own valid existence. This clone is substantially in agreement with the reference, but a complete review of all prevailing variants is recommended prior to use. More info
OTI Annotation:	This clone was engineered to express the complete ORF with an expression tag. Expression varies depending on the nature of the gene.
Components:	The ORF clone is ion-exchange column purified and shipped in a 2D barcoded Matrix tube containing 10ug of transfection-ready, dried plasmid DNA (reconstitute with 100 ul of water).
Reconstitution Method:	<ol style="list-style-type: none">1. Centrifuge at 5,000xg for 5min.2. Carefully open the tube and add 100ul of sterile water to dissolve the DNA.3. Close the tube and incubate for 10 minutes at room temperature.4. Briefly vortex the tube and then do a quick spin (less than 5000xg) to concentrate the liquid at the bottom.5. Store the suspended plasmid at -20°C. The DNA is stable for at least one year from date of shipping when stored at -20°C.
RefSeq:	NM_001099308.2 , NP_001092778.1
RefSeq Size:	2496 bp
RefSeq ORF:	1665 bp
Locus ID:	665001
Cytogenetics:	2