

Product datasheet for **MG221695**

Pfdn6 (NM_001185182) Mouse Tagged ORF Clone

Product data:

Product Type: Expression Plasmids
Product Name: Pfdn6 (NM_001185182) Mouse Tagged ORF Clone
Tag: TurboGFP
Symbol: Pfdn6
Synonyms: H-2Ke2; H2-Ke2; Ke-2
Mammalian Cell Selection: Neomycin
Vector: pCMV6-AC-GFP (PS100010)
E. coli Selection: Ampicillin (100 ug/mL)
ORF Nucleotide Sequence: >MG221695 representing NM_001185182
Red=Cloning site **Blue**=ORF **Green**=Tags(s)

TTTTGTAATACGACTCACTATAGGGCGGCCGGAATTCGTCGACTGGATCCGGTACCGAGGAGATCTGCC
GCC**CGATCGCC**

ATGGCTGAAGTATCCAAAAGAAGCTGCAGGGAGAGGTAGAGAAATATCAACAGCTGCAGAAGGACTTGA
GTAAATCTATGTCAGGGAGGCAGAAGCTCGAAGCACAGCTAACGGAAAACAATATCGTGAAGGAGGAGCT
GGCCCTGCTGGATGGATCCAACGTGGTCTTTAAGCTTCTGGGACCCGTGCTTGCAAACAGGAGCTGGG
GAGGCTCGGGCCACAGTAGGGAAGAGGCTAGACTACATCACAGCAGAAATCAAGCGCTACGAATCACAGC
TTCGGGACCTCGAGCGGCAGTCAGAGCAACAGAGGAAACCCCTTGCCCAACTGCAGCAGGAGTTCAGCG
GGCCCAAGCTGCAAAGGCTCCTGGGAAAGCC

ACGCGTACGCGGCCGCTCGAG - GFP Tag - GTTTAA

Protein Sequence: >MG221695 representing NM_001185182
Red=Cloning site **Green**=Tags(s)
MAELIQKQLQGEVEKYQLQKDL SKSMSGRQKLEAQLTENNIVKEELALLDGSNVVFKLLGPVLVKQELG
EARATVGKRLDYITAEIKRYESQLRDLERQSEQRETLAQLQEFQRAQAAPGKA

TRTRPLE - GFP Tag - V

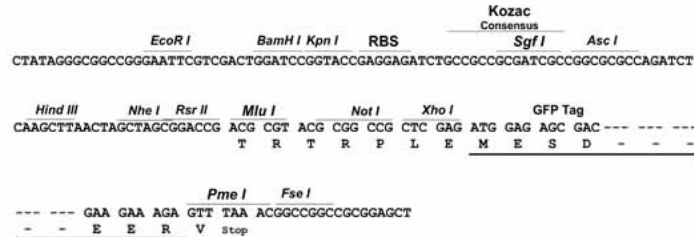
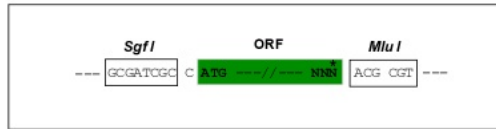
Restriction Sites: Sgfl-MluI



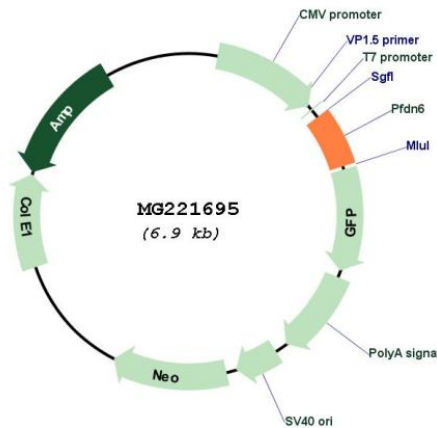
[View online »](#)

Cloning Scheme:

Cloning sites used for ORF Shutting:



Plasmid Map:



ACCN:

NM_001185182

ORF Size:

381 bp

OTI Disclaimer:

The molecular sequence of this clone aligns with the gene accession number as a point of reference only. However, individual transcript sequences of the same gene can differ through naturally occurring variations (e.g. polymorphisms), each with its own valid existence. This clone is substantially in agreement with the reference, but a complete review of all prevailing variants is recommended prior to use. [More info](#)

OTI Annotation:	This clone was engineered to express the complete ORF with an expression tag. Expression varies depending on the nature of the gene.
Components:	The ORF clone is ion-exchange column purified and shipped in a 2D barcoded Matrix tube containing 10ug of transfection-ready, dried plasmid DNA (reconstitute with 100 ul of water).
Reconstitution Method:	<ol style="list-style-type: none">1. Centrifuge at 5,000xg for 5min.2. Carefully open the tube and add 100ul of sterile water to dissolve the DNA.3. Close the tube and incubate for 10 minutes at room temperature.4. Briefly vortex the tube and then do a quick spin (less than 5000xg) to concentrate the liquid at the bottom.5. Store the suspended plasmid at -20°C. The DNA is stable for at least one year from date of shipping when stored at -20°C.
RefSeq:	<u>NM_001185182.1</u> , <u>NP_001172111.1</u>
RefSeq Size:	524 bp
RefSeq ORF:	384 bp
Locus ID:	14976
UniProt ID:	<u>Q03958</u>
Cytogenetics:	17 17.98 cM
Gene Summary:	Binds specifically to cytosolic chaperonin (c-CPN) and transfers target proteins to it. Binds to nascent polypeptide chain and promotes folding in an environment in which there are many competing pathways for nonnative proteins (By similarity).[UniProtKB/Swiss-Prot Function]