

Product datasheet for **MG221687**

Bicd2 (NM_029791) Mouse Tagged ORF Clone

Product data:

| | |
|---------------------------|---|
| Product Type: | Expression Plasmids |
| Product Name: | Bicd2 (NM_029791) Mouse Tagged ORF Clone |
| Tag: | TurboGFP |
| Symbol: | Bicd2 |
| Synonyms: | 0610027D24Rik; 1110005D12Rik; AA408834; mKIAA0699 |
| Mammalian Cell Selection: | Neomycin |
| Vector: | pCMV6-AC-GFP (PS100010) |
| E. coli Selection: | Ampicillin (100 ug/mL) |



[View online »](#)

ORF Nucleotide Sequence:

>MG221687 representing NM_029791
 Red=Cloning site Blue=ORF Green=Tags(s)

TTTTGTAATACGACTCACTATAGGGCGGCCGGGAATTCGTCGACTGGATCCGGTACCGAGGAGATCTGCC
 GCC**CGGATCGCC**

ATGTC**CGCGCCGTCGGAGGAGGAGGAGTATGCGCGTCTGGT**GATGGAGGCGCAGCCGGAGTGGCTGCGCG
 CCGAGGTGAAGCGGCTGTCCACGAGCTGGCCGAGACCAGCGTGAGAAGATCCAGGCGGCCGAGTATGG
 ACTGGCGGTGCTGGAGGAGAAGCACAGCTCAAGCTGCAGTTCGAGGAGCTCGAGGTGGACTATGAGGCC
 ATCCGCGAGCGAGATGGAGCAGCTCAAAGAGGCATTTGGCCAGGCACATACAAACCACAAGAAGTGGCTG
 CTGATGGTGAGAGCCGGGAGGAGCCTGATCCAGGAGTCGGCCTCCAAGGAGCAGTACTACGTGCGGAA
 GGTGCTGGAGCTGCAGACAGAGCTGAAACAGCTGCGCAACGTCTCACCAACACCCAGTCTGAGAATGAG
 CGCCTCACGTCTGTGGCCAGGAGCTAAAAGAGATCAACCAGAATGTGGAGATCCAGCGTGGTGCCTGC
 GGGATGACATCAAGGAGTACAAGTTCGGGAGGCCGCTACTTCAGGACTACTCAGAGCTGGAGGAGGA
 GAACATCAGCCTGCAGAAACAAGTGTCTGTGCTCAGGCAGAACCGGTGGAGTTTGAGGGCCTCAAGCAT
 GAAATCAAGCGCCTGGAGGAGGAGACAGAGTACCTCAACAGCCAGCTAGAGGATGCCATCCGGCTTAAGG
 AGATCTCTGAACGGCAGTTGGAGGAGGCCGCTGGAGACACTGAAGACAGAGCGGGAGCAGAAGAACAACCT
 GCGCAAGGAGTTGTCGCACTACATGAGCATCAACGATTCTTCTATACCAGCCACCTGCAGGTCTCCTTA
 GATGGCCTCAAGTTCAGTGATGATACTGTACCAGCAGAGCCCAACAATGACGCCGAAGCCCTGGTCAATG
 GCTTTGAGCACAGTGGCTTGGTCAAATCATCTTGGACAACAAGACATCCACACCCAGGAAGGATGGCCT
 AGCTCCACCCCTCCCCAGCCTCGTCTGTGACCTGCTCAGTGAGCTCCACATATCTGAGATCCAGAAGCTG
 AAACAGCAGCTGGTGCAGATGGAGCGGGAGAAGGTGGCCCTGCTGGCAACACTGCAGGACACACAGAAGC
 AGCTGGAGCAGGCTCGGGGAACCTCTCTGAGCAGCATGAGAAGGTGAATCGTCTCACAGAGAACCTTAG
 TGCCCTCCGGCGCCTGCAGGCTGGCAAGGAGCGACAGACCTCGTTGGATGATGAGAAGGACCGTGACAGC
 CACGAAGACGGTGACTACTATGAGGTGGACATCAATGGGCTGAGATCCTGGCCTGCAAGTACCACGTGG
 CTGTGGCTGAGGCTGGCGAGCTCCGGGAGCAGCTCAAGGCGTTGCGCAGCACACGAAAGCTCGCGAAGC
 CCAGCACGCAGAAGAAAAGGGCCGGTATGAGGCTGAGGGCCAGGCACTACTGAGAAGATCTCTCTGCTG
 GAGAAGGCTAGCCACCAGGACCGAGAGCTGCTGGCCCATCTGGAAAAGGAGCTGAAGAAGGTGAGCGATG
 TGGCTGGTGAGACCCAGGCGAGCCTGAATGTGGCTCAGGATGAGCTGGTACCTCAGCGAGGAGCTGGC
 CAACCTTACCACCATGTGTGCATGTGCAACAACGAGACGCCAACCGTGTGATGCTCGACTATTATCGT
 GAGGGCCAGGGCAAGGCTGGCCGCACCAGCCAGAGGGCCGGCGCCGGTACCTGTCTCTTGCCCA
 AGGGGCTGTTGGCCACAGAGGTGGGCCGAGCAGATGGTGGGACTGGGGACAACAGTCCTTACCCAGTTC
 TCACTGCCGTACCTCTGAGTGACCCCGCCGGGAACCTATGAACATCTACAACCTGATCGCCATCATC
 CGAGACCAGATCAAGCACCTGCAGGCAGCCGTGGACCGTACGACCGAGCTGTCCCGGCAGCGGATTGCC
 CGCAGGAGCTGGGCCCTGCTGTGGACAAGGACAAGGAAGCACTCATGGAGGAGATCCTCAAGCTGAAGTC
 CCTGCTGAGTACCAAGCGGGAGCAGATCACCACACTGCGCACCGTGTCAAGGCCAACAGCAGACAGCT
 GAGGTGGCCCTGGCCAACCTGAAGAGCAAGTATGAGAACGAGAAGGCCATGGTGACCGAGACCATGATGA
 AGCTACGGAACGAGCTCAAGGCCCTCAAGGAAGACGCAGCCACCTTCTCTCCCTGCGTGCCATGTTTGC
 CACCAGGTGTGACGAATACATCACACAGCTGGATGAGATGCAGCGGCAGCTGGCAGCTGCCGAGGACGAG
 AAGAAGACCCCTTAACCTCTGTTGGCATGGCCATCCAGCAGAAGCTGGCGCTCACCCAGCGGCTGGAGC
 TGCTGGAGCTGGACCATGAACAGACCCGCAGGGGCCGAGCAAGGCCCTCCAAGGCCAAGCCAGCCTC
 ACCGAGCCTG

AG**CGGACCG**ACGCGTACGCGGCCGCTCGAG - GFP Tag - GTTTAA

Protein Sequence: >MG221687 representing NM_029791
 Red=Cloning site Green=Tags(s)

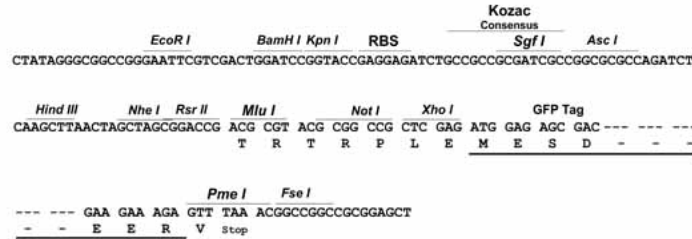
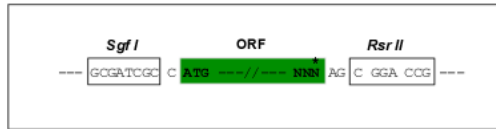
```
MSAPSEEEYARLVMEAPQEWLRAEVKRLSHELAEATTREKIQAAEYGLAVLEEKHQLKLQFEELEVYEA
IRSEMEQLKEAFGQAHTNHKKVAADGESREESLIQESASKEQYYVRKVLELQTELKQLRNVLNTQSENE
RLTSSVAQELKEINQVVEIQRGRLRDDIKEYKFREARLLQDYSELEENISLQKQVSVLRQNQVFEGLKH
EIKRLEEEETEYLNQLEDAIRLKEISERQLEEALETLKTEREQKNLRKELSHYMSINDSFYTSHLQVSL
DGLKFSDDTVTAEPNDAEALVNGFEHSLVKSSLDNKTSTPRKDGLAPPSPSLVSDLLSELHISEIQKL
KQQLVQMEREKVGLLATLQDTQKQLEQARGTLEQHEKVNRLTENLSALRRLQAGKERQTSLDNEKDRDS
HEDGDYVEVDINGPEILACKYHVAVAEAGELREQLKALRSTHEAREAQAHEEKGRYEAEGQALTEKISLL
EKASHQDRELLAHLEKELKKVSDVAGETQGSLNVAQDELVTFSEELANLYHHVCMCNNETPNRVMLDYR
EGQGKAGRTSPEGRGRSPVLLPKGLLATEVGRADGGTGDNSPSPSSSLPSLSDPRREPMMNIYNLIAII
RDQIKHLQAAVDRTEL SRQRIASQELGPAVDKDKEALMEEILKLSLLSTKREQITTLRTVLKANKQTA
EVALANLKSKEYENKAMVTETMMKLRNELKALKEDAATFSSLRAMFATRCDEYITQLDEMQRQLAAAEDE
KKTLNLSLLRMAIQKLAL TQRLELLELDHEQTRRGRSKAASKAKPASP
```

SGP^{TR}RRLE - GFP Tag - V

Restriction Sites: Sgfl-RsrII

Cloning Scheme:

Cloning sites used for ORF Shuttling:



ACCN: NM_029791

ORF Size: 2460 bp

OTI Disclaimer: The molecular sequence of this clone aligns with the gene accession number as a point of reference only. However, individual transcript sequences of the same gene can differ through naturally occurring variations (e.g. polymorphisms), each with its own valid existence. This clone is substantially in agreement with the reference, but a complete review of all prevailing variants is recommended prior to use. [More info](#)

OTI Annotation: This clone was engineered to express the complete ORF with an expression tag. Expression varies depending on the nature of the gene.

Components: The ORF clone is ion-exchange column purified and shipped in a 2D barcoded Matrix tube containing 10ug of transfection-ready, dried plasmid DNA (reconstitute with 100 ul of water).

Reconstitution Method:

1. Centrifuge at 5,000xg for 5min.
2. Carefully open the tube and add 100ul of sterile water to dissolve the DNA.
3. Close the tube and incubate for 10 minutes at room temperature.
4. Briefly vortex the tube and then do a quick spin (less than 5000xg) to concentrate the liquid at the bottom.
5. Store the suspended plasmid at -20°C. The DNA is stable for at least one year from date of shipping when stored at -20°C.

RefSeq: [NM_029791.4](#)

RefSeq Size: 4634 bp

RefSeq ORF: 2463 bp

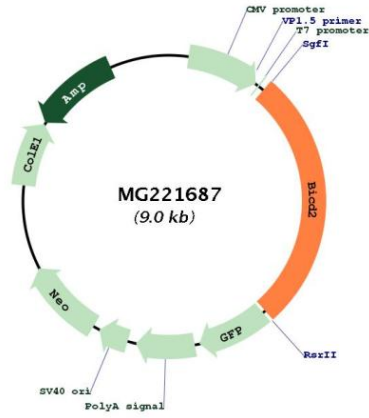
Locus ID: 76895

UniProt ID: [Q921C5](#)

Cytogenetics: 13 A5

Gene Summary: Acts as an adapter protein linking the dynein motor complex to various cargos and converts dynein from a non-processive to a highly processive motor in the presence of dynactin. Facilitates and stabilizes the interaction between dynein and dynactin and activates dynein processivity (the ability to move along a microtubule for a long distance without falling off the track) (PubMed:11483508, PubMed:25035494, PubMed:24986880, PubMed:22956769). Facilitates the binding of RAB6A to the Golgi by stabilizing its GTP-bound form (PubMed:25962623). Regulates coat complex coatamer protein I (COPI)-independent Golgi-endoplasmic reticulum transport via its interaction with RAB6A and recruitment of the dynein-dynactin motor complex (PubMed:12447383, PubMed:25962623). Contributes to nuclear and centrosomal positioning prior to mitotic entry through regulation of both dynein and kinesin-1. During G2 phase of the cell cycle, associates with RANBP2 at the nuclear pores and recruits dynein and dynactin to the nuclear envelope to ensure proper positioning of the nucleus relative to centrosomes prior to the onset of mitosis (PubMed:20386726).[UniProtKB/Swiss-Prot Function]

Product images:



Circular map for MG221687