

Product datasheet for **MG221681**

Foxp4 (NM_001110824) Mouse Tagged ORF Clone

Product data:

Product Type:	Expression Plasmids
Product Name:	Foxp4 (NM_001110824) Mouse Tagged ORF Clone
Tag:	TurboGFP
Symbol:	Foxp4
Synonyms:	1200010K03Rik; 2310007G05Rik; mFKHLA
Mammalian Cell Selection:	Neomycin
Vector:	pCMV6-AC-GFP (PS100010)
E. coli Selection:	Ampicillin (100 ug/mL)



[View online »](#)

ORF Nucleotide Sequence:

>MG221681 representing NM_001110824
 Red=Cloning site Blue=ORF Green=Tags(s)

TTTTGTAATACGACTCACTATAGGGCGGCCGGGAATTCGTCGACTGGATCCGGTACCGAGGAGATCTGCC
 GCC**CGGATCGCC**

ATGATGGTGGAGTCTGCATCGGAGACAATCAGGTCGGCTCCGTCTGGTCAGAACGGCGTGGGCAGCCTCT
 CTGCGCAGGCTGATGGCGCGGTGGGGCCGGGACCGCGGCACGGCCCCGGCTGCCGGTAGGGATGCCTC
 AGGCAGGGAAGCAGCCAGCGGAGGAGCCGACAGCAATGGCGAGATGAGCCCCGGGAGCTTCTGCACTTC
 CAACAGCAACAGGCTCTCCAGGTGGCCCGGAGTTCCTGTTGCAGCAAGCCTCCAGCCTGAACTCCCCGG
 GGAACAATGACAGTAAACAGTCGGCCTCTGCGGTGCAGGTGCCTGTGTCTGTGGCCATGATGTCCCAGCA
 GATGCTTACCCCCAGCAGATGCAGCAGATCCTGTCGCCACCTCAGTGCAGGCCTTGCTGCAGCAGCAA
 CAGGCTCTCATGCTCCAGCAGTGCAGGAGTATTACAAGAAGCAGCAAGAGCAGCTCCACCTGCAGCTCC
 TACCCAGCAGCAGGCTGAAAACAGCAGCCAAAGAGGCCCTGGGGAACAAGCAGCTGGCCTTCCAGCA
 GCAGCTCTGCAGATGCAACAGTTGCAGCAACAGCACTTGCTCAACCTCCAGAGGCAGGGCTGGTCAGC
 CTGCAGCCAAGCCAAGCCTCAGGGCCCCCTCAGGCCCTCCCGCAAGCAGCCGTGTGCCCGACAGACCTGC
 CCCAGCTGTGAAAGGCGAGGGTGCCTCCGGGAGCCCGCTGAGGACAGCGGCAGGCAGGAGGGGTGGA
 CCTCGCCAGCACAGCTGTTACTGCTACCTCGTTTGCCAGCCCTCCCAAGGTCTCCCCGCCCTCTCCCAC
 CACCCCTTACCCAACGGACAACCCACTGTGCTCACATCTCGGAGAGACAGCTCCTCCCATGAGGAGACCC
 CCAGTTCACCCCTCTTTATGGACATGGGGAGTGAAGTGGCCAGGCTGTGAGACCCTGTGTGAAGACCT
 GGGCCAGTTTATCAAACCTCAACACAGAACACGCTTTGGATGACCGGAGCAGGCCCAATGCCCGGTG
 CAGATGCAGGTGGTCCAACAGCTGGAGATCCAGCTGGCCAAGGAGAGTGAAGCGCTGCAGGCCATGATGG
 CACATCTGCACATGCGGCCTTCAGAGCCCAAGCCCTTCAGCCAGCCACTGAACCCAGTCCCTGGCTCCTC
 CTCATTCTCCAAGGTGACCGTCTCCGCAGACCCGTTCCCGGATGGCCTCGTGCACCCCCCAACTTCAGCC
 GCTGCCCCCGTACACCCCTGCGTCCCCCTGGCCTGGGCTCTGCCTCTTTGCACAGTGGGGGCCCTGCC
 GCAGGAGAAGTAATGACAAATTCTGCTCCCCATCTCCTCAGAGCTTGCCGAGAATCATGAGTTCTACAA
 GAACGCTGACGTGAGGCCCCCTTACCTACGCTTCCCTATCCGCCAGGCCATTCTGAAAACCTCCAGAT
 CGGCAGCTGACGCTAAATGAGATTTATAACTGGTTCACCAGGATGTTCCGCTACTTCCGAAGAAACAGG
 CCACCTGGAAGAATGCCGTGCGCCACAACCTCAGCCTGCACAAGTGTTCGTCCGTGGGAGAACGTCAA
 GGGGGCCGTGTGGACTGTGGATGAGCGGGAATATCAGAAACGGAGACCGCAAAGATGACAGGGAGTCCC
 ACTCTGGTGAAGAACATGATCTCGGCCTCAGTTACGGGGCACTTAACGCCAGCTACCAGGCTGCCCTGG
 CAGAGAGCAGTTCCTCTCTCAGCAACCCCGCATGCTGAACCCTGGCTCAGCCAGCAGCCTTCTGCC
 CCTCAGCCAGGAGACCTGGGTGTCCTGGGGAACCACTACCCAGCAATGGGAGCAGCAGCCCGCCTCGT
 CTTTCCCCTCCTCAGTACAGCCACCAGATAAAGTCAAAGAGGAGCCTGCAGAGGCAGAGGAAGACCCGAC
 GGCCGGGGCCTCCCTTGGGCGCCCCAACCCAGCACTGTGGGGCCTCCAGAAGACAGGGACCTGGAGGA
 GGACCTGGGAGGAGGACATGTCC

ACGCGTACGCGGGCCGCTCGAG - GFP Tag - GTTTAA

Protein Sequence: >MG221681 representing NM_001110824
 Red=Cloning site Green=Tags(s)

MMVESASETIRSAPSGQNGVGSLSAQADGGGGAGTAGTAPAAGRASGREAAASGGADSNEMSPAELLHF
 QQQALQVARQFLLQQASSLNSPGNDSKQSASAVQVPVSVAMMSQMLTPQQMQQILSPPQLQALLQQQ
 QALMLQQLQEYKKQEQELHLQLLTQQQAGKQPKALGNKQLAFQQQLLQMQLQQQHLLNLQRQGLVS
 LQPSQASGPLQALPQAAVCPTDLPQLWKGEAGQPAEDSGRQEGLDLASTAVTATSFASPPKVSPPLSH
 HPLPNGQPTVLTSTRDSSSHEETPSSHPLYGHGECKWPGCETLCEDLGQFIKHLNTEHALDDRSTAQCRV
 QMQVVQLEIQLAKESERLQAMMAHLHMRPSEPKPFSQPLNPVPGSSSFKVTVSADFPDGLVHPPTS
 AAPVTPLRPPGLGSASLHSGGPARRRSNDKFCSPISSELAQNHEFYKNADVRPPFTYASLIRQAILET
 PD RQLTLNEIYNWFTRMFAYFRRNTATWKNVVRHNLSLHKCFVRVENVKGAVWTVDEREYQKRRPPKMTGSP
 TLVKNMISGLSYGALNASYQAALAESSFLLSNPGMLNPGSASSLLPLSQEDLVGPGEPLPSNGSSSPPR
 LSPPQYSHQIQVKEEAEEDRRPGPPLGAPNPSTVGPPEDRDLEEDLGGEDMS

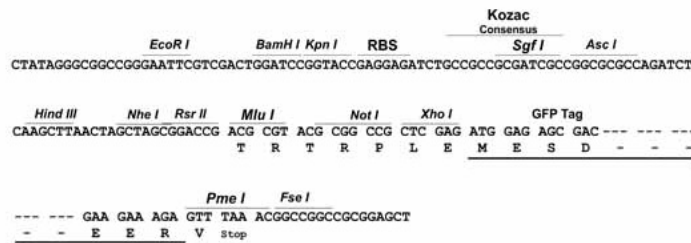
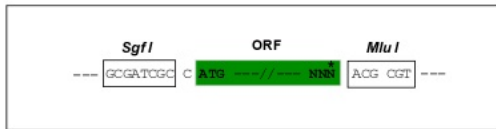
TRTRPLE - GFP Tag - V

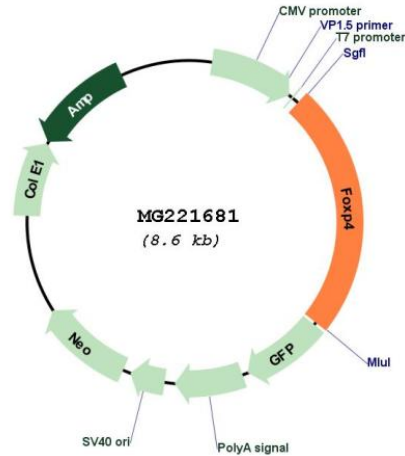
Restriction Sites:

SgfI-MluI

Cloning Scheme:

Cloning sites used for ORF Shuttling:



Plasmid Map:


ACCN: NM_001110824

ORF Size: 2055 bp

OTI Disclaimer: The molecular sequence of this clone aligns with the gene accession number as a point of reference only. However, individual transcript sequences of the same gene can differ through naturally occurring variations (e.g. polymorphisms), each with its own valid existence. This clone is substantially in agreement with the reference, but a complete review of all prevailing variants is recommended prior to use. [More info](#)

OTI Annotation: This clone was engineered to express the complete ORF with an expression tag. Expression varies depending on the nature of the gene.

Components: The ORF clone is ion-exchange column purified and shipped in a 2D barcoded Matrix tube containing 10ug of transfection-ready, dried plasmid DNA (reconstitute with 100 ul of water).

Reconstitution Method:

1. Centrifuge at 5,000xg for 5min.
2. Carefully open the tube and add 100ul of sterile water to dissolve the DNA.
3. Close the tube and incubate for 10 minutes at room temperature.
4. Briefly vortex the tube and then do a quick spin (less than 5000xg) to concentrate the liquid at the bottom.
5. Store the suspended plasmid at -20°C. The DNA is stable for at least one year from date of shipping when stored at -20°C.

RefSeq: [NM_001110824.1](#), [NP_001104294.1](#)

RefSeq Size: 4056 bp

RefSeq ORF: 2058 bp
Locus ID: 74123
UniProt ID: [Q9DBY0](#)
Cytogenetics: 17 C
Gene Summary: Transcriptional repressor that represses lung-specific expression.[UniProtKB/Swiss-Prot Function]