

## Product datasheet for **MG221630**

### Col5a3 (NM\_016919) Mouse Tagged ORF Clone

#### Product data:

**Product Type:** Expression Plasmids  
**Product Name:** Col5a3 (NM\_016919) Mouse Tagged ORF Clone  
**Tag:** TurboGFP  
**Symbol:** Col5a3  
**Mammalian Cell Selection:** Neomycin  
**Vector:** pCMV6-AC-GFP (PS100010)  
**E. coli Selection:** Ampicillin (100 ug/mL)  
**ORF Nucleotide Sequence:** >MG221630 representing NM\_016919  
Red=Cloning site Blue=ORF Green=Tags(s)

TTTTGTAATACGACTCACTATAGGGCGGCCGGAATTCGTCGACTGGATCCGGTACCGAGGAGATCTGCC  
GCC**CGATCGCC**

ATGAGAAGCTGCCGGAGACTGGATCAGCTTCAGGCCGGCCTCTGCCTGCTCCTGGCCTCCCTGCAGCTCG  
TGTCTGGACGCTGGCTGCAGAACCTGTGGACGTACTGGAAGCCTGGGGTGTGCATAGAGACCAGGCTGG  
GGTGGCTGAAGGGCCTGGCTTCTGCCCCCTGAGGATCCACAGGGTGACCAGCATTTCAGGGTGGGCAAG  
TCCAGCCTTCTCAGTGTCCCCACGTGGCAGCTCTCCAGATGGGCATTTCTGAGAAGTTTCTGTGTC  
TGCTCACACTGAGGGCCAGCCAGCCAATCAGTCTGCTCTTCTGTCTATTTATGATGAGAAGGGTCCG  
GCAGCTGGGGCTGGCACTGGGGCCAGCTCTGGGCCTCCTTGGTGACTCCTTCAGGCCCTCCCAAGCAA  
GTCAACATTATGGATGGCAGGTGGCACCCTGTGGCAGTCAGCATCAGTGGTAACAAGGTGACCCTGGTGG  
TTGACTGTGAACCGCAGCCCCAACATTTGGTCAGGGCCTCGGTTTATAAGTACAGCTGGACTCACTGT  
GATGGGAACCCAGGACACCAGGGAAGAGTCTTTTGGGGAGACATCCAGGAGCTGCTGTTAATCCAGAC  
CCTCAGGCTGCCTTCCAGGCCTGTGAGAGCTACCTCCCTGGTTGTGAAACCCTCGATTCCACAACCACAG  
GGGCCCCAAAGACGATGAACCAGAAACCCTGCCCTCGTCGAAAGGGCAAAGGGAAGAAAAAGG  
GCGGGTTCGAAAGGGCAAGGGAAGAAAAGAAAACAAGGAGACCTCAGAGCTGAGTCCGACCCTGGTGCC  
CCTGAGAACCAGACCTCCCTCCACATCCCTGAGACAGAGAAGACAGTTCCCCACCTGCCTCTGACTCCCA  
CACCTCTGGCCATCACCACCACTGTACGATTGGACAAAATGCCACAGTCTCGCAGGGGTTGGACTCCGG  
TACTGAAACCGAGCAGACGACTCCAGAGGTGGACTCTACTGAGGAGGGTGAAGGAGGTGGCCCCACCATG  
GGCCCCAAGTTCCGGGCAGCAGACGAGTCTTACAGACTGAGTCCAGATCTTTCTGGTGTGGAGAAA  
AGGGAGCGAAAGGAGAGCCTGCGACAGTACAGCAGGGACAGCAGTTTGGGGGCTGCAGGAGCTCCAGG  
ACCCCGGGGAATATCTGGTCTTTCAGGCCTCCTGGGCCCTCCGGGCTTCCCTGGGGACCGTGGTCTACCG  
GGTCTGCCGGCTCCAGGAATCCAGGCATCGATGGAGCCCGGGCCTGCCGGCACAGTGATTATGA  
TGCCGTTCCATTTGCAAGCAGCTCGATGAAGGGACCCCAAGTGTCTTCCAGCAGGCCAGGCCAGGC  
AGTATTGCAACAGGCTCAGCTGCATGAAAGGGCCCCCTGGTCCAGTAGGGCTCAGTGGCGCCAGGC  
CCTGTGGCCTCCCTGGATATCCAGGTCTGAAAGGTGAACTGGGGAAGTGGGGCCACAGGGCCCCCGAG  
GATTACAGGGCCTCCTGGCCTCCTGGACGGGAAGCAAGACAGGCCGAGCTGGAGCAGATGGGGCTCG



[View online »](#)

GGGGCTCCCGGGAGACACAGGACCTAAGGGTGACAGGGGCTTTGATGGCCTGCCCGGGCTGCCTGGTGAG  
AAGGGCCAAAGGGGTGACTTTGGACGAGTAGGGCAACCTGGTCCCCCAGGAGAGGATGGTGTAAAGGGCC  
TGCAGGGACCTCCAGGGCCCACTGGCCAGGCTGGAGAGCCGGGTCCCCGAGGTCTGATTGGCCCCAGAGG  
TCTCCCAGGTCCCCTAGGACGCCCGGTGTGACAGGGAGTGATGGCGCACAGGGGCCAAAGGCAACGTG  
GGTCTCTGGAGAACCAGGACCCCAAGGACAGCAAGGAAACACGGCTCCCAGGGAATTCAGGCCCCC  
AGGGGCCATTGGCACTCCCGGGGAAAAGGGTCCCCTGGAAACCCGGAATTCAGGTGTCCAGGATC  
TGAGGGCCCCCGGGCCACCCAGGCCACGAGGGTCCCACAGGAGAAAAGGGGCTCAGGGCCCCACAGGA  
TCAGCAGGCCCTCGGGGTATCCTGGACTTCGTGGTGTGAAGGGTACCTCTGGTAACCGGGTCTCCAAG  
GGGAGAAAAGGAGAAAAGGGGAGAGGATGGCTTTCCTGGCTCAAGGGTGATGAGGGACAAAAGGCGACCG  
GGGAAACCCCGACCCCAAGTCCAGAGGAGAGGATGGTCCAGAAGGACAAAAGGGGCTGGGGGACTG  
CCTGGTGTGAGGGTCTCCAGGAGCAGCAGGGGAGAAGGGCAAGCTTGGGGTCCAGGTCTCCAGGTT  
ATCCAGGACGCCAGGACCTAAGGGATCTATTGGATTTCTGGACCTTGGGACCACTGGGGGAGAAAGG  
CAAGCGGGGCAAAGCAGGACAGCCAGGAGAGGAAGGAGAACGCGGCACACCGGGCACCCGAGGAGACAGG  
GGACAGCCGGGGCCACAGGCCAGCCTGGCCCCAAGGGTGACGTGGGCCAGAATGGTCTCTGGGCCCC  
CTGGAGAAAAGGGTCTACCCGGTCTTCAAGGCCACCAGGATTCGCCGACAAAAGGCCCCCCGGGTCC  
TCAGGGGAAAAGATGGGATATCTGGGCACCTGGACAAAGAGGAGAATTGGGCTTCCAAGGTCTGACAGGC  
CCCCCTGGACCAGCTGGCGTCTTGGTCTCAGGGAAAGGTAGGGGACGTGGGGCTCTAGGCGAGAGAG  
GCCCCCAGGGCTCTGGACCTCTGGTGAACAAGGTCTGCCAGGCATAGAAGGCAGAGAAGGGGCCAA  
GGGTGAGCTAGGACCCCTGGGGTCCGTCCGGGAAGGAGGGGCCACCTGGGCCCAGGGGTTCCCTGGCCCC  
CAAGGAGCCCCGGAGACCCAGGACCCATTGGTTTGAAGGGTGACAAAGGTCCCCAGGCCCTGTGGGG  
CAAATGGTCCCCGGGAGAGCGTGGTCTGTAGGCCCTCTGGTGGCATTGGGCTTCTGGCCAGAGTGG  
AGGGCAAGGCCCTATTGGTCTGCTGGCAGAAGGGTCCCAGGGGAGAACGGGGTACTCTGGTCTACT  
GGCAAAGATGGTATTCCAGGACCCCGGGGCTTCCAGGGCCCTCTGGAGCTGCGGGGCTCTGGGGAAG  
AAGGAGACAAGGGGGAAGTAGGGATGCCTGGTCACAAAGGAAGCAAAGGGGATAAAGGAGATGCAGGCC  
ACCTGGACCAACAGGAATAAGAGGTCCAGCAGGCCATTACAGCCTCCCGGTGCTGATGGCGCTCAGGGT  
CGCCGGGACCCCTGGCCTCTCGGGCAGAAGGGGATGACGGAGTTCGAGGCTTGTAGGTGTAATTG  
GTCCTCCAGGTCTGCAGGGGCTGCCGGTCTCCGGGGAGAAGGGCGAGGTTGGAGACGTAGGATCCAT  
GGGTCCACATGGAGCTCCAGGCCCTCGGGTCCCCTGGGCCAGTGGATCAGAGGGCCCCCAGGTCTG  
CCTGGAGGAGTAGGACAGCCTGGTGTGTGGCGAGAAGGGTGAAGGAGGATGCTGGAGACGCCGGAC  
CCCCAGGAATTCGGCATCCCTGGGCCAAAGGTGAAATTTGGTAAAAGGGGATTCCGGTCCATCAGG  
GGCTGCTGGTCCCCAGGCAAGAAAGACCCCAAGGAGAGGACCGCTCTAAGGGGAACATGGGTCCACA  
GGAATCCCTGGAGATCTAGGGCCCCAGGAGACCTGGAGTTCGGGTATTGATGGCATCCAGGGGAGA  
AGGAAATGCTGGTGATATTGGGGGACCGGGCCACCTGGAGCTTCCGGGGAACCTGGTGCCCGTGGCCT  
CCCTGGCAAGAGGGGTTCCCCTGGCCGCATGGGTCCAGAAGGAAGAGAGGGCGAGAAAGGCGCAAGGGA  
GATGCTGGTCTGATGGACCCCAAGGACAGGACAGGCCCAATTGGGGTTCGAGGGCCCCCTGGACGAATTG  
GGCCTGATGGTCTTCCAGGGATCCCTGGTCTGTGGGTGAACAGGTCTCCTGGACCTCCTGGGTAAT  
CGGCCCTCCAGGGCCCCGGGCCACCTGGCCTCCCTGGCCTGAAGGGAGATGCTGGCCCAAGGGGGAG  
AAGGGCCACATTTGGCTAATAGGCCTCATTGGTCCCCAGGGGAGCCGGTGAGAAAGGCGATCAGGGT  
TGCCAGGTGTGACAGGGCCCCCAGGCCTCAGGGAGACCTGGTCTCCCTGGTCTGTGGTCTGTTAGG  
TCACCCTGGGCCCCAGGTGTGGTGGGCCCTCTGGGACAGAAGGGCTCCAAGGGTCCCCGGGATCTCTT  
GGTCTCGTGGAGACCCTGGACCAGCGGTCTCCTGGTCCCCCGGGTCTCCGGCTGAGGTGCATGGCC  
TGCGCAGGCGCCGATCTGTGACGGACACCTGGAAGGTGGCCTGGAGGAGGTGATGGCCTCACTGAATTC  
ACTGAGCTTGGAGCTGCAGCAGTTGCAGAGACCTTGGGCACAGCCGAGAGCCCAGGCCCTCATGTGCCGA  
GAGCTTACCAGGACACCCACACCTGCCGATGGAGAGTACTGGATTGACCCCAATCAGGGCTGTGCAC  
GTGACGCCTTCAAGTTTTCTGCAACTTACGGCAGGAGGTGAGACCTGTCTCTATCCAGACAAGAAGTT  
TGAGACGGTGAAGTGGCCTCGTGGTCCCAGAGAGAAGCCTGGAGGCTGGTACAGCACCTCCGCCGAGGG  
AAGAAGTTCTCTATGTGGATGTGATGGTCCCCGGTGAATGTGGTCCAGTTGACCTTCTGAAGTTGT  
TGAGTGTGCAGCCATCAGAGGTTCACTTACATCTGCCAGAAGTCCGGTGGCATGGCTGGATGAAGCTGC  
GGGTGACCACAGGCACTCCATCCGCTTCCAAGGGACCAACTGGGAAGAGTTGTCCTTCAACCAGACAACA  
GCAGTACCATCAAGGTCTCCATGATGGCTGTGGGTCCGGAAGGGACAGGCGAAGACCCTCTTTGAAT  
TCAGCTCTTGTGGGTTTCTGCCTCTGTGGGATGTGGTGCCTCTGACTTTGGTCCAGACGAACAAAA  
GTTTGGGTTTGAAGTCCGCTCCATCTGCTTTAGCAGC

ACGCGTACGCGGCCGCTCGAG - GFP Tag - GTTTAA

Protein Sequence:

>MG221630 representing NM\_016919  
 Red=Cloning site Green=Tags(s)

MRSCRRLDQLQAGLCLLLASLQLVSWTLAEPVDVLEAWGVHRDQAGVAEGPGFCPLRIPQGDRAFRVVK  
 SLLLSVPTWQLFPDGHFENFSVLLTLRAQPANQSVLLSIYDEKQVRLGLALGPALGLLGDSEFRPLPKQ  
 VNIMDGRWHRVAVSISGNKVTLVVDCEQPPTFGQGPRFISTAGLTVMGTDREESFEGDIQELLLIPD  
 PQAAFQACESYLPGETLDSTTTGAPKDDPETPAPRRRKGKGGKGRGRKGGKGRKKNKETSLSPTPGA  
 PENQTSLHIPETEKTVPHLPLTPPLAITTTVTIGQNAVTSQGLDSGTETEQTTPPEVDSTEEGEGGGPTM  
 GPKFRAAEQSLQTEFQIFPGAGEKGAKEPATVEQQQFEGPAGAPGPRGISGPGSGPPGPPGFGDRGLP  
 GPAGLPGIPGIDGARLPGTVIMMPHFHASSSMKGGPVVVFQQAQAQAVLQQAQLSMKGGPPGVLTGRPG  
 PVGLPGYPLKGEVGVPGQPRGLQGPPGPPGREGKTRAGADGARGLPGDTGPKGDRGFDGLPLPGE  
 KGQRGDFGRVQPGPPGEDGVKGLQGPPGPTGQAGEPGPRGLIGPRGLPGPLGRPGVTGSDGAPGAKGNV  
 GPPGEPGPPGQQGNHGSQIGPGQPIGTPGEKGGPNPPIPGVPGSEGGPHGHEGPTGEKGAQGGPPG  
 SAGPRGYPGLRGVKGTSNRRGLQGEKGERGEDGFPFKGDEGPKGDRGNPGGPPRGEDGPEGQKGGGL  
 PGDEGPPGAAGEKGLGVPGLPGYGRPGPKSGIFGPGPLGPLGEKGRKAGQPGEEGERGTPGTRGDR  
 GQPGATGQPGKGDVQNGSPGPPGKGLPGLQGPPGPPGPKGPPGQKDGISGHPGQRGELGFQGLTG  
 PPGPAGVLGPQKVGDVGPLGERGPPGPPGPEQGLPIEGREGAKGELGPLSVGKEGPPGPRGFPGP  
 QGAPGDPGPIGLKGDGKPPGVPVANGSPGERGVPVSGGIGLPGQSGGQPIGPAGEKGSPPGERGTPGT  
 GKDGIPGPPGLQGPSGAAGPSGEEGDKGEVGMGPHKSKGDKGDAGPPGPTGIRGPHAGSGLPGADGAQG  
 RRGPPGLFGQKGGDGVRFVGVIGPPGLQGLPGPPGKGEVGDVGSMPHGAPGPRGPPGSPGSEGGPGL  
 PGGVQPGAVGKEGPEGDAGDAGPPGPIGIPGPKGEIGEKDSSGSAAGPPGKGGPPGEDGSKGNMGPT  
 GLPGDLGPPGDPGVPIDGIPGEKGNAGDIGGPPGASGEPGARGLPGKRGSPGRMGPEGREGEKGAKE  
 DAGPDGPPGRTGPIGARGPPGRIIPDGLPIGPGVGEPLGPPGLIGPPGLGPPGLPGLKGDAGPKGE  
 KGHIGLIGLIGPPGEAGEKGDQGLPGVQGGPGLQGDPLPGPVGSLGHPGPPGVVGLGQKGSKSGPSGL  
 GPRGDPGAPGPPGPPGSPAEVHGLRRRRSVTDTLEGGLEEVMAASLNSLSLELQQLQRPLGTAESPLMCR  
 ELHRDHPHLPDGEYWIDPNQGCARDAFKVFCNFTAGGETCLYPDKKFETVKLASWSREKPGGWYSTRRR  
 KKF SYVDADGSPVNVVQLTFLKLLSAAAHQRFTYICQNSVAWLDEAAGDHRHSIRFQGTNWEELSFNQTT  
 AATIKVSHDGCVRKQGAKTLFEFSSSVGFLPLWDVAASDFGQTNQKFGFELGSIICFSS

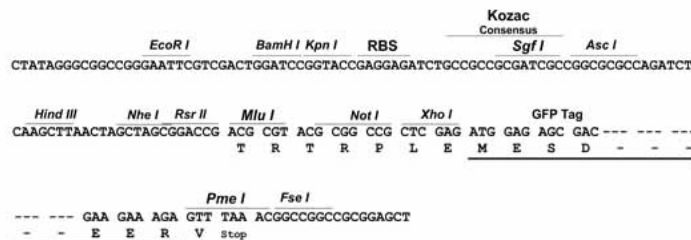
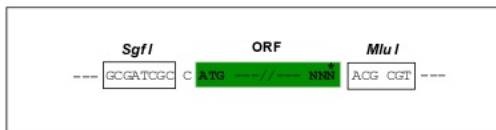
TRTRPLE - GFP Tag - V

Restriction Sites:

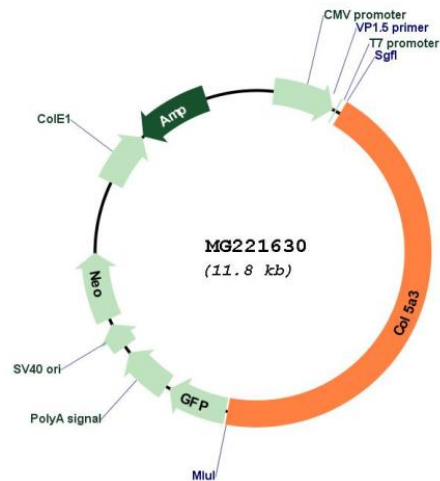
Sgfl-MluI

Cloning Scheme:

Cloning sites used for ORF Shuttling:



Plasmid Map:



ACCN: NM\_016919

ORF Size: 5217 bp

OTI Disclaimer: The molecular sequence of this clone aligns with the gene accession number as a point of reference only. However, individual transcript sequences of the same gene can differ through naturally occurring variations (e.g. polymorphisms), each with its own valid existence. This clone is substantially in agreement with the reference, but a complete review of all prevailing variants is recommended prior to use. [More info](#)

OTI Annotation: This clone was engineered to express the complete ORF with an expression tag. Expression varies depending on the nature of the gene.

<b>Components:</b>	The ORF clone is ion-exchange column purified and shipped in a 2D barcoded Matrix tube containing 10ug of transfection-ready, dried plasmid DNA (reconstitute with 100 ul of water).
<b>Reconstitution Method:</b>	<ol style="list-style-type: none"><li>1. Centrifuge at 5,000xg for 5min.</li><li>2. Carefully open the tube and add 100ul of sterile water to dissolve the DNA.</li><li>3. Close the tube and incubate for 10 minutes at room temperature.</li><li>4. Briefly vortex the tube and then do a quick spin (less than 5000xg) to concentrate the liquid at the bottom.</li><li>5. Store the suspended plasmid at -20°C. The DNA is stable for at least one year from date of shipping when stored at -20°C.</li></ol>
<b>RefSeq:</b>	<u>NM_016919.3, NP_058615.1</u>
<b>RefSeq Size:</b>	6086 bp
<b>RefSeq ORF:</b>	5220 bp
<b>Locus ID:</b>	53867
<b>Cytogenetics:</b>	9 A3