

## Product datasheet for **MG221626**

### Rims1 (NM\_183018) Mouse Tagged ORF Clone

#### Product data:

Product Type:	Expression Plasmids
Product Name:	Rims1 (NM_183018) Mouse Tagged ORF Clone
Tag:	TurboGFP
Symbol:	Rims1
Synonyms:	C030033M19Rik; mKIAA0340; Rab3ip1; Rim; RIM1; RIM1a; RIM1alpha; Serg1
Mammalian Cell Selection:	Neomycin
Vector:	pCMV6-AC-GFP (PS100010)
E. coli Selection:	Ampicillin (100 ug/mL)
ORF Nucleotide Sequence:	>MG221626 representing NM_183018 Red=Cloning site Blue=ORF Green=Tags(s)

TTTTGTAATACGACTCACTATAGGGCGGCCGGAATTCGTCGACTGGATCCGGTACCGAGGAGATCTGCC  
GCC**CGATCGCC**

ATGTCCTCGGCCGTGGGGCCCCGAGGTCTCGCCACCCACGGTGCCTCCCCTATGCAAGAACTGCCCCG  
ACCTGAGCCACCTGACCGAGGAGGAGAGAACATTATCATGGCAGTGATGGACCGCAGAAGGAAGAGGA  
GGAAAAAGAAGAGGCCATGCTCAAGTGTGTGTCAGGGACATGGCGAAGCCTGCTGCCTGCAAAACACCA  
AGAAATGCTGAAAGCCAGCCCCATCAACCACCACTGAACATTTTCAGATGTGCTGTGTTCCAGAAAGC  
CAAGCAGCGAAGAGGGAGGCCAGACAGAACTGGAGATTGCATCAACAGTTTGAAGCTACAAGGAACA  
AGTGAGAAAAATCGGAGAGGAAGCCAGGCGTTACCGGGCGAGCACAAGATGATGCCCCGACGTGTGGA  
ATCTGTATAAGACAAAGTTTGCTGATGGATGTGGCCATCTCTGCTCCTATTGTGCGACCAAGTTCTGTG  
CACGCTGTGGAGGCCGAGTGTCTCTGCGATCGAACAATGAGGACAAAGTGGTTATGTGGGTATGCAATTT  
ATGTGCAAGCAACAAGAGATATTAACGAAATCTGGAGCGTGGTTCTTCGGAAGTGGTCTCAGCAGCCC  
AGTCAAGATGGGACTCTGAGTGACACGGCTACAGGTGCTGGATCTGAGGTGCAAGAGAAAAAGAAAGCTC  
GGCTCCAAGAGCGATCAAGGTCTCAGACGCCCTTGAGTACAGCAGCTGTCTTTCCCAAGCACTGCTTC  
CCATGGTGCACCACTGGACAGGAACAAAGGGCGGAGCCCTCACAGCAAGCCTTGGTCTGAACAGAAG  
CAGGCATCAAGGTCAAGAAGTGAGCCACCAAGGAAAGGAAGGCTCCAGGGCTTTAGAGCAGAATG  
GCAAGGGAGGCCAGAAGGTGAGCGCAAACGTGTCCCAAGTCTGTGGTGAACCCGGGGAAGGGACCGC  
GGATGAACGCGGAGAGGAAGGAGAGGCGGAAACCCGAGGCTGGAGAAAGGGCGCTCTCAGGACTACCCG  
GACCGGCTCGAGAAACGCGAGGATGGCAGGGTGGCTGAAGACGAAAAGCAGAGGAAGGAGGAGGGCG  
TGTCCACGCCGAGTACACGAGCTGCGAGGACGTGGAGCTGGAGAGCGAGAGCGTGAAGGAGAAAGGTGA  
CTTGGACTACTGGTTGGATCCTGCCACGTGGCATAGCAGGAAACGTGCGCTATTAGTTCGCATCCTGTA  
ACGTGGCAGCCATCTAAAGAGGGGACCGATTAATCGGCCGTGTTATTCTTAACAAAAGAACAACCATGC  
CCAAAGAATCAGGTGCATTATTGGTCTCAAGGTGGTTGGAGAAAAATGACGGACTTAGGGCTCTTGG  
TGCTTTCATACCAAAGTAAAGAAGGTAGCCTGGCAGATGTTGTCGGACACCTAAGAGCAGGGGATGAA



[View online »](#)



Protein Sequence: >MG221626 representing NM\_183018  
 Red=Cloning site Green=Tags(s)

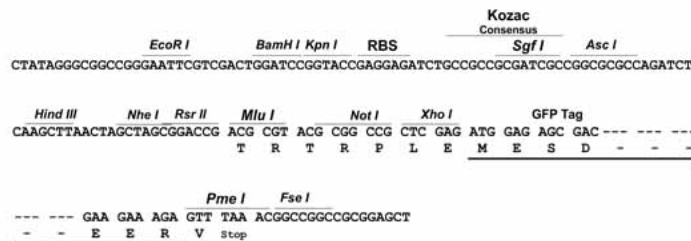
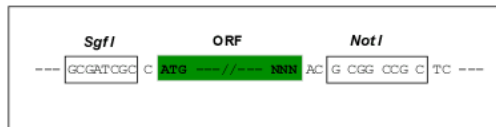
MSSAVGPRGPRPPTVPPMQELPDL SHL TEEERNIIMAVMDRQKEEEEEKEEAMLKCVVRDMAKPAACKTP  
 RNAESQPHQPPLNIFRCVCVPRKPSSEEGPDRNWRLHQQFESYKEQVRKIGEEARRYQGEHKDDAPT  
 ICHKTKFADGCGHLCSYCRKFCARCGGRVSLRSNNEDKVVMMWCNLCKRQQEILTKSGAWFFGSGPQQP  
 SQDGLSDTATGAGSEVPREKKARLQERSRSQTPLESTAAVSSQDTASHGAPLDRNKGAEPSQQALGPEQK  
 QASRSRSEPPRRERKKAPGLSEQNGKGGQKSERKRVPKSVVQPGEGTADERERKERRETRRLEKGRSQDYP  
 DRLEKREDGRVAEDEKQRKEEEGVSTPEYTSCEDEVELESVSEKGLDYWLDPATWHSRETSPISSHPV  
 TWQPSKEGDRILGRVILNKRTTMPKESGALLGLKVVGKMTDLGRLGAFITKVKKGLADVGHLAGDE  
 VLEWNGKPLPGATNEEVYNIILESKSEPQVEIIVSRPIGDIPIPESSHPPLESSSSSFESQKMERPSIS  
 VISPTSPGALKDAPQVLPQLSVKLWYDKVGHQLIVNVLQATDLPPRVDGRPRNPYVKMYFLPDRSDKSK  
 RRTKTVKLLEPKWNQTFVYSHVHRRDFRERMLEITVWDQPRVQDEESEFLGEILIELETALLDDEPHWY  
 KLQTHDESSLPLPQSPFMPRRRHIGESSKQLQRSQRISDSIDSYEVDGIGVPPVGYRASARESKA  
 TTLTVPEQQRTHHRSRSVSPHRGDDQGRPRSRLPNVPLQRSLEIHPTRRSRSPTRHHDASRSLADHRS  
 RHAESQYSSEPDSELLMLPRAKGRSAECLHMTSELQPSLDRARSASTNCLRPTSLHSPERERHSRKSE  
 RSSIQKQSRKGTASDADRVLPPCLSRGYAIPRATDQPVIRGKHTTRSRSEHSSIRTLCSMHHLAPGGS  
 APPSPLLTRTHRQGSPTQSPADTSFGSRRGRQLPQVPVRSISIEQASLVVEERTRQMKMKVHRFKQTTG  
 SGSSQELDHEQYSKYNIIHKDQYRSCDNASAKSSSDSDVSDVSAISRASSTRLSSTFSMSEQSERPRGRIS  
 SFTPKMQGRRMGTSGRAIIKSTSVSGEITYLEHNDGSQSDTAVGTVGAGGKRRSSLAKVVAIVSRRSR  
 STSQLSQTESGHKCLKSTIQRSTETGMAEMRKMVRQPSRESTDGSINSYSSEGNIIFPGVVRVPDSQFS  
 DFLDGLGPAQLVGRQTLATPAMGDIQIGMEDKKGQLEVEVIRARSLTQKPGSKSTPAPYVKVYLLENGAC  
 IAKKKTRIAARKTLDPL YQQSLVFDESPQGVKLVQIVWGDYGRMDHKCFMGVAQIILLEELDLSSMVIWYK  
 LFPPSSLVDPTLTPLTRRASQSSLESSSGPPCIRS

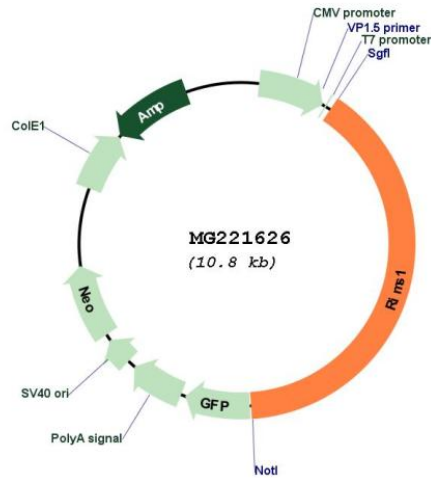
TRPLE - GFP Tag - V

Restriction Sites: SgfI-NotI

Cloning Scheme:

Cloning sites used for ORF Shuttling:



**Plasmid Map:**


**ACCN:** NM\_183018

**ORF Size:** 4305 bp

**OTI Disclaimer:** The molecular sequence of this clone aligns with the gene accession number as a point of reference only. However, individual transcript sequences of the same gene can differ through naturally occurring variations (e.g. polymorphisms), each with its own valid existence. This clone is substantially in agreement with the reference, but a complete review of all prevailing variants is recommended prior to use. [More info](#)

**OTI Annotation:** This clone was engineered to express the complete ORF with an expression tag. Expression varies depending on the nature of the gene.

**Components:** The ORF clone is ion-exchange column purified and shipped in a 2D barcoded Matrix tube containing 10ug of transfection-ready, dried plasmid DNA (reconstitute with 100 ul of water).

**Reconstitution Method:**

1. Centrifuge at 5,000xg for 5min.
2. Carefully open the tube and add 100ul of sterile water to dissolve the DNA.
3. Close the tube and incubate for 10 minutes at room temperature.
4. Briefly vortex the tube and then do a quick spin (less than 5000xg) to concentrate the liquid at the bottom.
5. Store the suspended plasmid at -20°C. The DNA is stable for at least one year from date of shipping when stored at -20°C.

**RefSeq:** [NM\\_183018.3](#)

**RefSeq Size:** 4308 bp

**RefSeq ORF:** 4308 bp

**Locus ID:** 116837

**UniProt ID:** [Q99NE5](#)

**Cytogenetics:** 1 A5

**Gene Summary:** Rab effector involved in exocytosis (PubMed:11797009). May act as scaffold protein that regulates neurotransmitter release at the active zone. Essential for maintaining normal probability of neurotransmitter release and for regulating release during short-term synaptic plasticity (PubMed:11797009). Plays a role in dendrite formation by melanocytes (By similarity).[UniProtKB/Swiss-Prot Function]