

Product datasheet for **MG221620**

Hcn2 (NM_008226) Mouse Tagged ORF Clone

Product data:

Product Type:	Expression Plasmids
Product Name:	Hcn2 (NM_008226) Mouse Tagged ORF Clone
Tag:	TurboGFP
Symbol:	Hcn2
Synonyms:	BCNG2; HAC1; trls
Mammalian Cell Selection:	Neomycin
Vector:	pCMV6-AC-GFP (PS100010)
E. coli Selection:	Ampicillin (100 ug/mL)



[View online »](#)

ORF Nucleotide
Sequence:

>MG221620 representing NM_008226
Red=Cloning site Blue=ORF Green=Tags(s)

TTTTGTAATACGACTCACTATAGGGCGGCCGGGAATTCGTCGACTGGATCCGGTACCGAGGAGATCTGCC
GCC**CGGATCGCC**

ATGGATGCGCGCGGGGGCGGGCGGGCGGGCGATAGTCCGGGCACGACCCTGCGCGGGGGCCGCCGC
CACCGCCGCCCGCCCGCCCGCCCTCAGCCTCAGCCACCACCCGCGCCACCCCGAACCCACGACCCC
CTCGCACCCGGAGTCGGCGGACGAGCCCGCCCGCGCCCGGCTCTGCAGCCGCGACAGCGCTGCACC
CCTGGCGCGGCCAAGGGCGGCGGAATGGCGAGTGCGGGCGGGGAGCCGAGTGCAGCCCGAGGGCC
CCGCGCGCGGCCCAAGGTTTCGTTCTCATGCCGCGGGGCGCCCTCCGGGCCCTCGGCGGCCGAGGAGGC
GGGCAGCGAGGAGGGCCCGGGTGGAGCCGCGGGCAGCCAGGCTAGCTTCTGCAGCGCCAATTC
GGGGCGCTTCTGCAGCCCGCGTCAACAAGTTCTCCCTGCGGATGTTCCGCAGCCAGAAGGCCGTGGAGC
GCGAGCAGGAACCGTGAAGTCGGCGGGGCGCTGGATCATCCACCCTACAGCGACTTCAGGTTCTACTG
GGACTTACCATGCTGTTGTTTCATGGTGGGAAATCTCATTATCATTCCCCTGGGCATCAGTTTCTCAAG
GACGAGACCACCGCCCTGGATCGTCTTCAACGTGGTCTCGGACACTTCTTCCCTCATGGACTTGGTGT
TGAATTCGCGACCGGCATTGTTATTGAGGACAACACGGAGATCATCCTGGACCCCGAGAAGATAAAGAA
GAAGTACTTGGTACGTGGTTCGTGGTGGACTTCGTGTATCCATCCCGGTGGACTACATCTTCCCTCATA
GTGGAGAAGGGAATCGACTCCGAGGTCTACAAGACAGCGCGTGTCTGCGCATCGTGCCTTACCAAGA
TCCTCAGTCTGCTGCGGCTGCTGCGGCTATCACGGCTCATCCGATATATCCACAGTGGGAAGAGATTTT
CCACATGACCTACGACCTGGCAAGTGCAGTGCATGCGCATCTGTAACTGATCAGCATGATGCTACTGCTC
TGCCACTGGGACGGTTGCCTGCAGTTCCTGGTGCCTGCTGCAAGACTTCCCAGCGACTGCTGGGTGT
CCATCAACAACATGGTGAACCACTCGTGGAGCGAGCTTACTCGTTCGCGCTCTTCAAGGCCATGAGCCA
CATGCTGTGCATCGGCTACGGGCGGCGAGCGCCGAGAGCATGACAGACATCTGGCTGACCATGCTCAGC
ATGATCGTAGGCGCCACCTGCTATGCCATGTTTCATTGGGCACGCCACTGCGCTCATCCAGTCCCTGGATT
CGTCACGGCGCCAATACCAGGAGAAGTACAAGCAAGTAGAGCAATACATGTCTTCCACAACTGCCCGC
TGACTTCCGCCAGAAGATCCACGATTACTATGAACACCGGTACCAAGGGAAGATGTTTATGAGGACAGC
ATCCTTGGGGAACCAACGGGCCACTGCGTGGAGGATTGTGAATTCAACTGCCGGAAGCTGGTGGCTT
CCATGCCGCTGTTTGCCAAATGCAGACCCCAACTTCGTACAGCCATGCTGACAAAGCTCAAATTTGAGGT
CTTCCAGCCTGGAGATTACATCATCCGAGAGGGGACCATCGGGAAGAAGATGTACTTCATCCAGCATGGG
GTGGTGGAGCGTCTACCAAGGGCAACAAGGAGATGAAGCTGTGGATGGCTCCTATTTCCGGGAGATCT
GCTTGCTCAGGAGGGCCGGCGTACGGCCAGCGTGCAGCTGACACCTACTGTGCGCTCTACTACTGAG
TGTGGACAATTTCAACGAGGTGCTGGAGGAATACCCCATGATGCGGCGTGCCCTTGGAGACTGTGGCTATT
GACCGGCTAGATCGCATAGGCAAGAAGAACTCCATCTTGTGTCACAAGGTTACAGCATGATCTCAGCTCAG
GTGTGTTCAACAACCAGGAGAATGCCATCATCCAGGAGATTGTCAAATATGACCGTGAGATGGTGCAGCA
GGCAGAGCTTGGCCAGCGTGTGGGGCTCTTCCCACCACCGCCACCACCGCAGGTACATCGGCCATTGCC
ACCCTACAGCAGGCTGTGGCCATGAGCTTCTGCCCGCAGGTGGCCCGCCCGCTCGTGGGGCCCTGGCGC
TAGGCTCCCCACGCTAGTGCGCCGCGCCCGCCAGGGCTCTGCCTCTGCAGCCTCGCCAGGGCCACC
CGCAGCAAGCCCCGGCTGCACCTCGAGCCCTCGGGCACCGCGGACCTCACCTACGGTGTGCCTGGC
TCTCCGGCAACGCGTGTGGGGCCCGCATTGCCCGCACGTGCGCTGAGCCGCGCCTCGCGCCCACTGTCCG
CCTCGCAGCCCTCGTGCCTCATGGCGTGCCTCGCGCCAGCCCGCGGCTCTGCGCGCCCGGCCAGCAG
CTCCACGCGCGCCTGGGACCCGACCCACCGCCCGG[AT]CCGCGCGCCAGTCCGG[AT]CCGCGAGG
GACTCAGCCTCGCCGGGCGCTGCCAGTGGCCTCGACCCACTGGACTCTGCGCGCTCGCGCTCTCTTCCA
ACTTG

ACGGGGCGCTCGAG – GFP Tag – GTTTAA

Protein Sequence: >MG221620 representing NM_008226
 Red=Cloning site Green=Tags(s)

```
MDARGGGGRPGDSPGTTAPGPPPPPPPPAPPQPQPPAPPNPSTTPSHPEADEPGPRARLCSRDSACT
PGAAKGGANGECGRGEPQCSPEGPARGPKVSFSCRGAASGSPAEEAGSEEAGPAGEPRGSQASFLQRQF
GALLQPGVNKFSLRMFGSQKAVEREQERVKSAGAWIIHPYSDFRFYWDF TMLLFMVGNLIIIPVGITFFK
DETTAPWIVFNVSDDTFFLMDLVNFRFTGIVIEDNTEIILDPEKIKKKYLRTWFVVDVFSVIPVDYIFLI
VEKIDSEVYKTARALRIVRFTKILSLRLLRLSRLIRYIHQWEEIFHMTYDLASAVMRICNLISMMLLL
CHWDGCLQFLVPMLQDFPSCDWVSINNMVNHWSSELYSFALFKAMSHMLCIGYGRQAPESMTDIWLTMLS
MIVGATCYAMFIGHATALIQSLDSSRRQYQEKYQVEQYMSFHKLPAEFRQKIHDIYEHRYQGMFDEDS
ILGELNGLPLREEIVNFCRKLVASMPLFANADPNFVTAMLTKLKFEVFQPGDYIIREGTIGKMYFIQHG
VVSVLTKGNKEMKLSDGSYFGEICLLTRGRRTASVRADTYCRLYSLVDNFNEVLEEYPMRRRAFETVAI
DRLDRIGKKNISILLHKVQHDLSGVFNQENAI IQEIVKYDREMVQQAELGQRVGLFPPPPPPQVTSIAIA
TLQQAVAMSFQVVARPLVGPLALGSPRLVRRAPPGLPPAASPGPPAASPPAAPSSPRAPRTSPYGVPG
SPATRVGPALPARRLSRASRPLSASQPSLPHGVPAPSPAASARPASSSTPRLGPAPTARXXAAPSPXXRR
DSASPGAASGLDPLDSARSRLSSNL
```

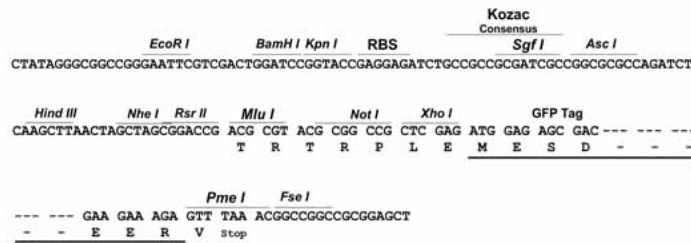
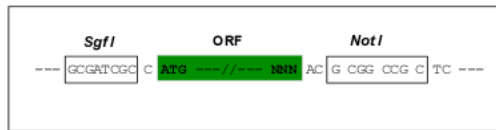
TRPLE - GFP Tag - V

Chromatograms: https://cdn.origene.com/chromatograms/ja2201_a05.zip

Restriction Sites: SgfI-NotI

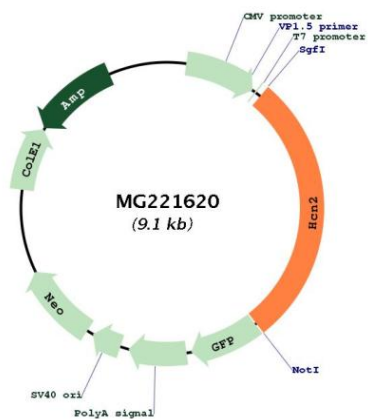
Cloning Scheme:

Cloning sites used for ORF Shuttling:



ACCN:	NM_008226
ORF Size:	2595 bp
OTI Disclaimer:	<p>Due to the inherent nature of this plasmid, standard methods to replicate additional amounts of DNA in E. coli are highly likely to result in mutations and/or rearrangements. Therefore, OriGene does not guarantee the capability to replicate this plasmid DNA. Additional amounts of DNA can be purchased from OriGene with batch-specific, full-sequence verification at a reduced cost. Please contact our customer care team at custsupport@origene.com or by calling 301.340.3188 option 3 for pricing and delivery.</p> <p>The molecular sequence of this clone aligns with the gene accession number as a point of reference only. However, individual transcript sequences of the same gene can differ through naturally occurring variations (e.g. polymorphisms), each with its own valid existence. This clone is substantially in agreement with the reference, but a complete review of all prevailing variants is recommended prior to use. More info</p>
OTI Annotation:	This clone was engineered to express the complete ORF with an expression tag. Expression varies depending on the nature of the gene.
Components:	The ORF clone is ion-exchange column purified and shipped in a 2D barcoded Matrix tube containing 10ug of transfection-ready, dried plasmid DNA (reconstitute with 100 ul of water).
Reconstitution Method:	<ol style="list-style-type: none"> 1. Centrifuge at 5,000xg for 5min. 2. Carefully open the tube and add 100ul of sterile water to dissolve the DNA. 3. Close the tube and incubate for 10 minutes at room temperature. 4. Briefly vortex the tube and then do a quick spin (less than 5000xg) to concentrate the liquid at the bottom. 5. Store the suspended plasmid at -20°C. The DNA is stable for at least one year from date of shipping when stored at -20°C.
RefSeq:	NM_008226.2 , NP_032252.1
RefSeq Size:	3195 bp
RefSeq ORF:	2592 bp
Locus ID:	15166
UniProt ID:	O88703
Cytogenetics:	10 C1
Gene Summary:	Hyperpolarization-activated ion channel exhibiting weak selectivity for potassium over sodium ions. Contributes to the native pacemaker currents in heart (If) and in neurons (Ih). Can also transport ammonium in the distal nephron. Produces a large instantaneous current. [UniProtKB/Swiss-Prot Function]

Product images:



Circular map for MG221620