

Product datasheet for **MG221610**

Atp4a (NM_018731) Mouse Tagged ORF Clone

Product data:

Product Type:	Expression Plasmids
Product Name:	Atp4a (NM_018731) Mouse Tagged ORF Clone
Tag:	TurboGFP
Symbol:	Atp4a
Mammalian Cell Selection:	Neomycin
Vector:	pCMV6-AC-GFP (PS100010)
E. coli Selection:	Ampicillin (100 ug/mL)



[View online »](#)

ORF Nucleotide Sequence:

>MG221610 representing NM_018731
 Red=Cloning site Blue=ORF Green=Tags(s)

GACGTTGTATACGACTCCTATAGGGCGGCCGGAATTCGTCGACTGGATCCGGTACCGAGGAGATCTGCC
 GCCGGCGCGCC

ATGGGGAAGGCAGAGAATTATGAACTGTAAGTCTGACTGAGTGGGCTGGCCCTGGTGGGACATGACTG
 CCAAGATGAGCAAGAAGAAGGCAGGAGGTGGGGAGGCAAGAAGAAGGAGAAGCTGGAGAACATGAAGAA
 GGAGATGGAGATTAACGACCACCAGCTATCAGTGTCTGAGCTGGAGCAGAAGTATCAGACCAGCGCCACC
 AAGGGCCTGAAGGCGAGCCTGGCAGCTGAGCTGCTGAGGGATGGACCAATGCGCTCCGGCCACCTC
 GGGGCACTCCCGAGTATGTGAAGTTGCCGTCAGCTGGCAGGTGGTCTGCAGTGCCTCATGTGGGTGGC
 TGCTGCTATCTGCCTCATTGCCTTTGCCATCCAGGCCAGCGAGGGTGACCTGACCACTGATGATAATCTG
 TACCTGGCGGTGGCACTCATTGCTGTGGTGTGGTCACTGGCTGTTTTGGCTACTACCAGGAGTTCAAGA
 GCACAAATATCATCGCCAGCTTCAAGAATCTGTACCCAGCAAGCCACTGTGATCCGAGACGGGACAA
 GTTCCAGATCAACGCGGATCAGCTTGTGGTGGGCGACCTGGTGGAGATGAAAGGCGGGGACCGCGTGCCA
 GCAGACATCCGCATTCTGTGAGCCAGGGCTGCAAGGTGGACAACCTCCTGCTCACTGGAGAGTCTGAAC
 CGCAGACCCGCTCGCCCGAGTGTACACATGAGAGTCCCCTTGAGACCCGCAACATCGCCTTCTTCCAC
 CATGTGTCTGGAGGGAACAGCTCAGGGTTTGGTGGTGGACCCGGCGATCGCACCATCATTGGGCGCATC
 GCCTCGTGGCCTCGGGTGTGGAACGAGAAGACTCCGATTGCAATCGAGATTGAACATTTTGTGGACA
 TCATTGCCGGCCTGGCCATCCTCTTGGTGCCACATCTTTGTGGTGGCCATGTGATTGGCTATACCTT
 CCTTCGGGCCATGGTCTTCTTATGGCCATTGTGGTAGCCTATGTGCCTGAGGGGCTGCTGGCAACTGTC
 ACAGTGCCTGTCACTGACAGCAAAGAGGTTGGCCAGTAAAACTGCGTGGTAAAAACTTAGAAGCAG
 TTGAGACCTAGTTTCTACATCAGTCACTGCTCAGACAAGACAGGAACCTCACTCAGAACCAGTACGAG
 GGTTCTCATCTATGGTTTGACAACCATATCCACACGGCGGACACCACAGAAGACCAGTACAGGGCAACG
 TTCGATCAGTCTGCGAGACATGGCGAGCGCTGTGCCGCGTGTCAACCTGTGCAACCGCCTGCCTTCA
 AGTCCGGCCAGGACGCGGTGCCGGTGCCCAAGCGCATCGTGATCGGAGACGCGTCAAGACTGCGTGTCT
 CAAGTTTTCGGAGCTGACGTTGGGCAACGCCATGGGTTACAGGGACCGCTTCCCAAGTTTTCGAGATC
 CCCTTCAACTCCATCAACAAGTTCAGCTGTCCATTACACCTGGAGGATCCACGCGACTCCCGGCACC
 TGCTGGTGTGAAGGGCGCCCTGAGCGCGTGTGGAGCGTTGCAGCTCCATCCTCATCAAGGGCCAGGA
 GCTGCCTCGGACGAGCAATGGCGTGGGCTTCCAGACAGCCTACCTCAGCCTGGGAGGCTAGGGCAA
 CGTGTCTTGGTTTCTGCCAGCTCTACCTGAATGAGAAGGACTACCCACCTGGCTATGCCTTTGATGTGG
 AGGCCATGAACTTCCGAGTAGTGGCCTCTGCTTTCGGGACTTGTATCCATGATTGACCCTCCCGGGC
 CACCGTTCCTGATGCTGTGCTCAATGCCGCACGGCAGGCATCCGGGTGATCATGGTGACCGGTGACCAT
 CCCATCACGGCCAAGGCCATCGCAGCCAGCGTGGGTATCATCTCAGAGGGCAGCGAGACAGTGAAGACA
 TCGCCGCCCGCTCCGGATGCCGGTGGACCAGGTTAATAGGAAGGATGCCCGGGCCTGCGTGATCAATGG
 TATGCAGCTGAAGGACATGGACCCGTCTGAGCTGGTGGAGGCGCTACGCACCCACCTGAGATGGTGT
 GCTCGAACAGTCTCAGCAGAAGCTGGGTGCCATTGTGGCTGTAAACAGGGGATGGTGTGAATGACTCCC
 CAGCCCTGAAGAAAGCTGACATTGGTGTAGCCATGGGCATTGCTGGCTCGGATGCTGCTAAAAATGCTGC
 TGACATGATCTTGCTGGATGACAACCTTTGCTTCCATTGTGACAGGCGTGGAGCAGGGCCGACTGATCTTT
 GACAACCTGAAGAAATCCATTGCATATACACTGACCAAGAACATTCCAGAAGTACACCCTACCTTATCT
 ATATCACTGTGAGTGTGCCCTACCCCTTGGGTGTATCACCATTCTTTCATAGAAGTCTGCACAGATAT
 CTTTCCATCTGTGTCCCTGGCGTACGAGAAGGCTGAGAGCGACATCATGCACCTGCGCCACGGAACCTT
 AAGCGTGACCGGTTGGTCAACGAACCCCTGGCTGCTTATTCTATTTCCAGATTGGTGCCATTGAGTCA
 TTGCCGGCTTTGCTGACTACTTCACGGCCATGGCGCAGGAGGGCTGGTCCCTCTGTTGTGTGAGGACT
 GCGGCCACAATGGGAGGACCACCATCTACAAGATCTTCAAGACAGCTACGGCCAGGAATGGACATTTGGT
 CAGCGCCTGTACCAGCAGTACACCTGTTACACCGTGTCTTTCATCAGCATCGAGATGTGCCAGATCGCAG
 ATGTCCTCATCCGCAAGACACGGCGCTCTGTTTTCCAGCAGGATTCTTTCAGGAACAAGATCCTGGT
 GATCGCCATCGTGTCCAGGTCTGCATTGGCTGCTTCTGTGCTACTGCCAGGGATGCCTAACATCTTC
 AACTTCATGCCCATCCGTTCCAGTGGTGGCTGGTCCCATGCCCTTCGGCTTCTCATCTTTGTCTATG
 ATGAGATCCGAAACTTGGAGTTCGCTGTTGCCAGGGAGCTGGTGGGACCAGGAAGTCTACTAT

AGCGGACCGACGCGTACGCGGCCGCTCGAG - GFP Tag - GTTTAA

Protein Sequence: >MG221610 representing NM_018731
Red=Cloning site Green=Tags(s)

```

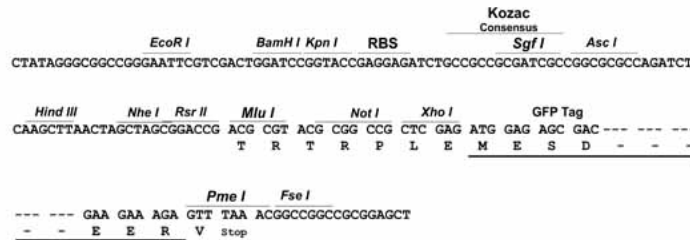
MGKAENYELYSVELGSGPGGDMTAKMSKKKAGGGGGKKKEKLENMKKEMEINDHQLSVSELEQKYQTSAT
KGLKASLAAELLLRDGPNALRPPRGTPPEYVKFARQLAGGLQCLMWVAAAICLIAFAIQASEGDLTTDDNL
YLAVALIAVVVVVTGCFGYQEFKSTNIIASFKNLVPQQATVIRDGDKFQINADQLVVDL VEMKGGDRVP
ADIRILSAQGCKVDNSSLTGESEPQTRSPECTHESPLETRNIAFFSTMCLGTAQGLVVSTGDRTIIGRI
ASLASGVENEKTPIAIEIEHFVDIIAGLAILFGATFFVVMAMCIGYFFLRAMVFFMAIVVAYVPEGLLATV
TVCLSLTAKRLASKNCVVKNEAVETL GSTSVICSDKTGTLTQNRMTVSHLWFDNHIHTADTTEDQSGQT
FDQSSSETWRALCRVLTLCNRAAFKSGQDAVPVPKRIVIGDASETALLKFSELTLGNAMGYRDRFPKVEI
PFNSINKFQLSIHTLEDPRDSRHLLVMKGAPERVLERCSSILIKGQELPLDEQWREAFQTAYLSLGGLE
RVLGFCQLYLNEKDYPGYAFDVEAMNFPSSGLCFAGLVSMIDPPRATVPDAVLKCRTAGIRVIMVTGDH
PITAKAIAASVGIISGSETVEDIAARLRMPVDQVNRKDARACVINGMQLKMDPSELVEALRTHPEMVF
ARTSPQQLGAIIVAVTGDGVNDSPALKKADIGVAMGIAGSDAAKNAADMILLDDNFASIVTGVQGRIF
DNLKKSIAAYTLTKNIPELTPYLIYITVSVPLPLGCITILFIELCTDIFPSVSLAYEKAESDIMHLRPRNP
KRDRLVNEPLAAYSFQIGAIQSFAGFADYFTAMAQEGWFPLLCVGLRPQWEDHHLQDLQDSYGGQWTFG
QRLYQQYTCYTVFFISIEMCQIADVLIRKTRRLSVFQQGFFRNKILVIAIVFQVCIGCFLCYCPGMPNIF
NFMPPIRFQWLVMPFGLLIFVYDEIRKLGVRCCPGS WWDQELYY
    
```

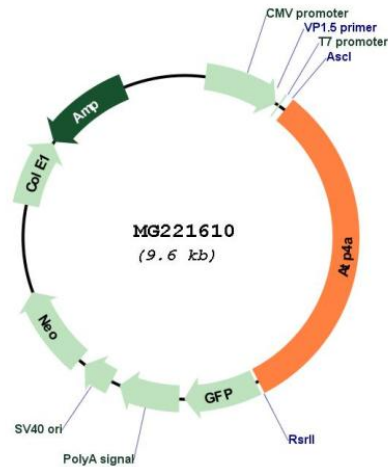
SGPTRTRPLE - GFP Tag - V

Restriction Sites: AscI-RsrII

Cloning Scheme:

Cloning sites used for ORF Shuttling:



Plasmid Map:


ACCN: NM_018731

ORF Size: 3075 bp

OTI Disclaimer: The molecular sequence of this clone aligns with the gene accession number as a point of reference only. However, individual transcript sequences of the same gene can differ through naturally occurring variations (e.g. polymorphisms), each with its own valid existence. This clone is substantially in agreement with the reference, but a complete review of all prevailing variants is recommended prior to use. [More info](#)

OTI Annotation: This clone was engineered to express the complete ORF with an expression tag. Expression varies depending on the nature of the gene.

Components: The ORF clone is ion-exchange column purified and shipped in a 2D barcoded Matrix tube containing 10ug of transfection-ready, dried plasmid DNA (reconstitute with 100 ul of water).

Reconstitution Method:

1. Centrifuge at 5,000xg for 5min.
2. Carefully open the tube and add 100ul of sterile water to dissolve the DNA.
3. Close the tube and incubate for 10 minutes at room temperature.
4. Briefly vortex the tube and then do a quick spin (less than 5000xg) to concentrate the liquid at the bottom.
5. Store the suspended plasmid at -20°C. The DNA is stable for at least one year from date of shipping when stored at -20°C.

RefSeq: [NM_018731.3](#), [NP_061201.2](#)

RefSeq Size: 3447 bp

RefSeq ORF: 3078 bp

Locus ID: 11944

Cytogenetics: 7 19.2 cM