

## Product datasheet for **MG221581**

### **Cul5 (NM\_001161618) Mouse Tagged ORF Clone**

#### **Product data:**

Product Type:	Expression Plasmids
Product Name:	Cul5 (NM_001161618) Mouse Tagged ORF Clone
Tag:	TurboGFP
Symbol:	Cul5
Synonyms:	4921514I20Rik; 8430423K24Rik; AI852817; C030032G03Rik; C330021I08Rik; VACM-1; VACM1
Mammalian Cell Selection:	Neomycin
Vector:	pCMV6-AC-GFP (PS100010)
E. coli Selection:	Ampicillin (100 ug/mL)



[View online »](#)

**ORF Nucleotide Sequence:**

>MG221581 representing NM\_001161618  
 Red=Cloning site Blue=ORF Green=Tags(s)

TTTTGTAATACGACTCACTATAGGGCGGCCGGGAATTCGTCGACTGGATCCGGTACCGAGGAGATCTGCC  
 GCC**CGGATCGCC**

ATGCGCTCTCTCGCGTGGCAGGCCGGGTGACCATGTAGCTGGAAGCCCGAGGAAGCACGGCTGCCCG  
 GGACGAGCTCGGCGCTGACGGCACGCCGCTCCGGCGTCCCCGCATCCCCCGCCGCGCCTGCGGGTCC  
 TGCTGGGAACCCCGCCTCTCGAGGAGGCTGGCCCCGAGCGCCGCAAGTCTCGCCCCGCTCTCGGAGA  
 GTCCAAGTTGAGAACATGGCGACGTCTAATCTGTTAAAGAATAAAGTTCTCTCCAGTTTGAAGACAAGT  
 GGGACTTCATGCATCCAATTGTTTTGAAGCTTTTACGCCAGGAATCTGTAACAAAACAGCAGTGGTTTGA  
 TCTATTTTCGGATGTACATGCTGTCTGTCTCTGGGATGATAAAGGCTCATCAAAAATTCATCAGGCTTTA  
 AAAGAAGATATTCTTGAGTTTATTAAGCAAGCACAGGCTCGTGTACTGAGCCATCAAGATGACACAGCTT  
 TGCTGAAGGCATATATTGTTGAATGGCGGAAATCTTCCACACAGTGTGATATTTTACAAAACCTTTTTG  
 TCAATTAGAGGTGACTCTATTGGGTAACAAAGCAGCAATAAAAAATCAAATATGGAAGACAGTATTGTT  
 CGAAAGCTCATGCTTGATACGTGGAATGAGTCGATTTTTTCAAATATAAAGAACAGACTCCAGGACAGTG  
 CAATGAAGCTGGTGCATGCTGAGAGATTAGGGGAAGCTTTTGATTCCCAGCTGGTCATCGGGGTGCGAGA  
 GTCCTATGTTAATCTTTGCTCCAACCCCGAGGACAAGCTTCAGATCTATAGGGATAATTTTGAAGAGGCA  
 TACTTGGACTCAACAGAGAGGTTTTATAGAACACAGGCACCCTCATATTTACAGCAAAAATGGTGTGACAG  
 ATTACATGAAATATCTCATGGAATGCTGTGTAATGCGCTGGTGACCTCCTTTAAAGAGACTATTTTACG  
 AGAATGCCAAGGCATGATCAAGCGAAATGAAACTGAAAAGTTACATTTGATGTTTTCTTGATGGACAAA  
 GTTCTAATGGGATAGAGCCGATGTTGAAGGACTTGGAGGAGCATATTATAAGTGGGGCCTAGCAGACA  
 TGGTGGCCGAGCTGAAACCATCACTGACTCTGAGAAGTATGTGGAGCAATTACTTACACTGTTTAA  
 TAGATTACAGTAAACTGGTCAAAGAAGCTTTTTCAGGATGATCCTCGTTTCTTACTGCAAGAGATAAGGCA  
 TATAAAGCAGTTGTTAATGATGCTACTATATTTAACTTGAATTGCCTTTGAAGCAAAAAGGAGTGGGT  
 TGAAAACTCAGCTGAGTCAAAAATGCCCGAGTTGCTTGCCAATTAAGTGTGACATGTTGTTAAGGAAAAAC  
 GCCATTAAGCAAAAAACTAACATCTGAGGAGATTGAAGCAAAGCTTAAAGAAGTGTCTTGGTACTTAA  
 TATGTACAAAACAAGATGTTTTTATGAGGTATCACAAAGCTCATCTTACCCGACGTCTCATATTGGACA  
 TCTCTGCTGATAGTGAGATTGAAGAAAACATGGTAGAGTGGCTAAGAGAAGTTGGTATGCCAGCAGATTA  
 TGTGAACAAGCTTGTAGAAATGTTTCAGGACATAAAAAGTATCTGAAGACTTGAACCAAGCTTTTAAAGAA  
 ATGCACAAAAATAATAAGTTGGCATTACCAGCTGATTCCGTTAATAAAGATTTTGAATGCTGGTCTT  
 GGTCTAGAAGCTCCGAGAAAGTCTTTGTCTCACTTCTACTGAACTGGAGGATTTGATACCTGAAGTAGA  
 AGAATTTTACAAAAAAATCACAGTGGTAGAAAATTAAGTGGCACCATCTCATGTCAAATGGAATTATA  
 ACATTTAAAAATGAAGTAGGTAGTATGATTTGGAAGTAAACCAGTTTTCAGTTGGCTGTGTTGTTTGCAT  
 GGAACCAAGGCCTAGAGAGAAAATCAGCTTTGAAAATCTAAAACCTGCAACGGAACCTCCAGATGCTGA  
 ACTTAGAAGGACTTTATGGTCTTTAGTAGCTTTTCCCAAGCTCAAACGGCAAGTTTTGTTGTATGACCT  
 CAAGTCAACTCACCAAGATTTTACAGAAGGCACCCTCTTCTCAGTGAACCAAGGACTTCACTCATAA  
 AAAATGCAAAAAGTACAGAAAAGGGGAAAATCAATTTGATTGGACGCTTGCAGCTCACTACAGAACGAAT  
 GAGAGAAGAAGAAAATGAAGGGATAGTCCAACATAAGAATATAAGAACCAGGAAGCCATCATAACAATA  
 ATGAAAATGAGAAAAGAAAATTAGCAATGCCAGCTGCAGACTGAATTAGTAGAAAATCTGAAAAACATGT  
 TCTGCTCAGAAAGATGATAAAGGAGCAGATGGAGTGGCTGATTGAACACAGGTACATCCGGAGGGA  
 CGAGGCCGACATCAACACCTTCTACATGGCC

**ACCGTACGCGGCCGCTCGAG** – GFP Tag – GTTTAA

**Protein Sequence:** >MG221581 representing NM\_001161618  
 Red=Cloning site Green=Tags(s)

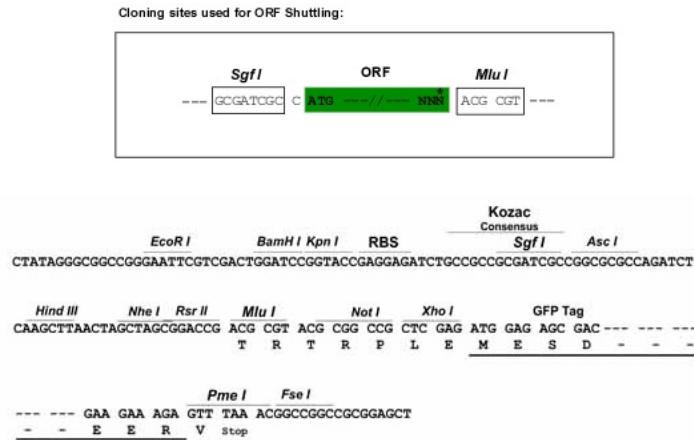
```

M R S L A W A G R G D H V A G K P E E A R L P G T S S A L T A R R S G V P R I P R R G L R G P A G N P G L S R R P G P E R R Q V S P R L A R
V Q V E N M A T S N L L K N K G S L Q F E D K W D F M H P I V L K L L R Q E S V T K Q Q W F D L F S D V H A V C L W D D K G S S K I H Q A L
K E D I L E F I K Q A Q A R V L S H Q D D T A L L K A Y I V E W R K F F T Q C D I L P K P F C Q L E V T L L G K Q S S N K K S N M E D S I V
R K L M L D T W N E S I F S N I K N R L Q D S A M K L V H A E R L G E A F D S Q L V I G V R E S Y V N L C S N P E D K L Q I Y R D N F E K A
Y L D S T E R F Y R T Q A P S Y L Q Q N G V Q N Y M K Y L M E C C V N A L V T S F K E T I L A E C Q G M I K R N E T E K L H L M F S L M D K
V P N G I E P M L K D L E E H I I S A G L A D M V A A A E T I T T D S E K Y V E Q L L T L F N R F S K L V K E A F Q D D P R F L T A R D K A
Y K A V V N D A T I F K L E L P L K Q K G V L K T Q P E S K C P E L L A N Y C D M L L R K T P L S K K L T S E E I E A K L K E V L L V L K
Y V Q N K D V F M R Y H K A H L T R R L I L D I S A D S E I E E N M V E W L R E V G M P A D Y V N K L A R M F Q D I K V S E D L N Q A F K E
M H K N N K L A L P A D S V N I K I L N A G A W S R S S E K V F V S L P T E L E D L I P E V E E F Y K K N H S G R K L H W H H L M S N G I I
T F K N E V G Q Y D L E V T T F Q L A V L F A W N Q R P R E K I S F E N L K L A T E L P D A E L R R T L W S L V A F P K L K R Q V L L Y D P
Q V N S P K D F T E G T L F S V N Q D F S L I K N A K V Q K R G K I N L I G R L Q L T T E R M R E E E N E G I V Q L R I L R T Q E A I I Q I
M K M R K K I S N A Q L Q T E L V E I L K N M F L P Q K K M I K E Q M E W L I E H R Y I R R D E A D I N T F I Y M A
  
```

TRTRPLE - GFP Tag - V

**Restriction Sites:** Sgfl-Mlul

Cloning Scheme:



- ACCN:** NM\_001161618
- ORF Size:** 2484 bp
- OTI Disclaimer:** The molecular sequence of this clone aligns with the gene accession number as a point of reference only. However, individual transcript sequences of the same gene can differ through naturally occurring variations (e.g. polymorphisms), each with its own valid existence. This clone is substantially in agreement with the reference, but a complete review of all prevailing variants is recommended prior to use. [More info](#)
- OTI Annotation:** This clone was engineered to express the complete ORF with an expression tag. Expression varies depending on the nature of the gene.
- Components:** The ORF clone is ion-exchange column purified and shipped in a 2D barcoded Matrix tube containing 10ug of transfection-ready, dried plasmid DNA (reconstitute with 100 ul of water).

**Reconstitution Method:**

1. Centrifuge at 5,000xg for 5min.
2. Carefully open the tube and add 100ul of sterile water to dissolve the DNA.
3. Close the tube and incubate for 10 minutes at room temperature.
4. Briefly vortex the tube and then do a quick spin (less than 5000xg) to concentrate the liquid at the bottom.
5. Store the suspended plasmid at -20°C. The DNA is stable for at least one year from date of shipping when stored at -20°C.

**RefSeq:** [NM\\_001161618.1](#), [NP\\_001155090.1](#)

**RefSeq Size:** 5942 bp

**RefSeq ORF:** 2487 bp

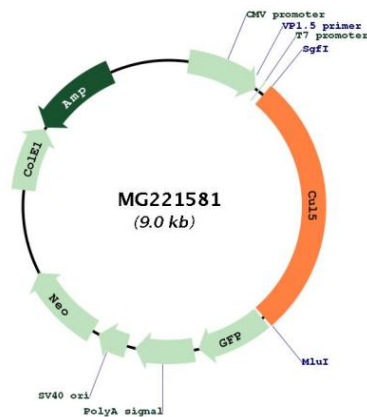
**Locus ID:** 75717

**UniProt ID:** [Q9D5V5](#)

**Cytogenetics:** 9 A5.3

**Gene Summary:** Core component of multiple SCF-like ECS (Elongin BC-Cullin 2/5-SOCS-box protein) E3 ubiquitin-protein ligase complexes, which mediate the ubiquitination and subsequent proteasomal degradation of target proteins. As a scaffold protein may contribute to catalysis through positioning of the substrate and the ubiquitin-conjugating enzyme. The functional specificity of the E3 ubiquitin-protein ligase complex depends on the variable substrate recognition component. ECS(SOCS1) seems to direct ubiquitination of JAK2. Seems to be involved in proteasomal degradation of p53/TP53 stimulated by adenovirus E1B-55 kDa protein. May form a cell surface vasopressin receptor.[UniProtKB/Swiss-Prot Function]

**Product images:**



Circular map for MG221581