

Product datasheet for **MG221558**

Pax4 (NM_011038) Mouse Tagged ORF Clone

Product data:

Product Type:	Expression Plasmids
Product Name:	Pax4 (NM_011038) Mouse Tagged ORF Clone
Tag:	TurboGFP
Symbol:	Pax4
Synonyms:	Pax-4
Mammalian Cell Selection:	Neomycin
Vector:	pCMV6-AC-GFP (PS100010)
E. coli Selection:	Ampicillin (100 ug/mL)
ORF Nucleotide Sequence:	>MG221558 representing NM_011038 Red=Cloning site Blue=ORF Green=Tags(s)

TTTTGTAATACGACTCACTATAGGGCGGCCGGAATTCGTCGACTGGATCCGGTACCGAGGAGATCTGCC
GCC**CGATCGCC**

ATGCAGCAGGACGGACTCAGCAGTGTGAATCAGCTAGGGGGACTCTTTGTGAATGGCCGGCCCTTCCTC
TGGACACCAGGCAGCAGATTGTGCAGCTAGCAATAAGAGGGATGCGACCCTGTGACATTTACGGAGCCT
TAAGGTATCTAATGGCTGTGTGAGCAAGATCCTAGGACGCTACTACCGCACAGGTGTCTTGAACCCAAG
TGTATTGGGGGAAGCAAACCACGTCTGGCCACACCTGCTGTGGTGGCTCGAATTGCCAGCTAAAGGATG
AGTACCCTGCTCTTTTTGCCTGGGAGATCCAACACCAGCTTTGCACTGAAGGGCTTTGTACCCAGGACAA
GGCTCCCAGTGTGCTCTATCAATCGAGTACTTCGGGCACTTCAGGAAGACCAGAGCTTGCACTGGACT
CAACTCAGATCACCAGCTGTGTTGGCTCCAGTTCTTCCCAGTCCCACAGTAACTGTGGGGCTCCCCGAG
GTCCCCACCCAGGAACCAGCCACAGGAATCGGACTATCTTCTCCCCGGGACAAGCCGAGGCACTGGAGAA
AGAGTTTCAGCGTGGGCAGTATCCAGATTCAGTGGCCCGTGGGAAGCTGGCTGCTGCCACCTCTCTGCC
GAAGACACGGTGGGGTTTGGTTTTCTAACAGAAGAGCCAAATGGCGCAGGCAAGAGAAGCTGAAATGGG
AAGCACAGCTGCCAGGTGCTTCCCAGGACCTGACAGTACCAAAAAATTCTCCAGGGATCATCTCTGCACA
GCAGTCCCCGGCAGTGTACCCTCAGCTGCCTTGCCTGTGCTGGAACCATTGAGTCCCTTCTCTGTGCTC
CTATGCTGTGGGACAGCACCAGGAGATGTTCCAGTGACACCTCATCCCAGGCCTATCTCCAACCTACT
GGGACTGCCAATCCCTCCTTCTGTGGCTTCTCCTCATATGTGGAATTTGCCTGGCCCTGCCTCACCAC
CCATCCTGTGCATCATCTGATTGGAGGCCAGGACAAGTGCCATCAACCCATTGCTCAAACCTGGCCA

ACGCGTACGCGGCCGCTCGAG - GFP Tag - GTTTAA



[View online »](#)

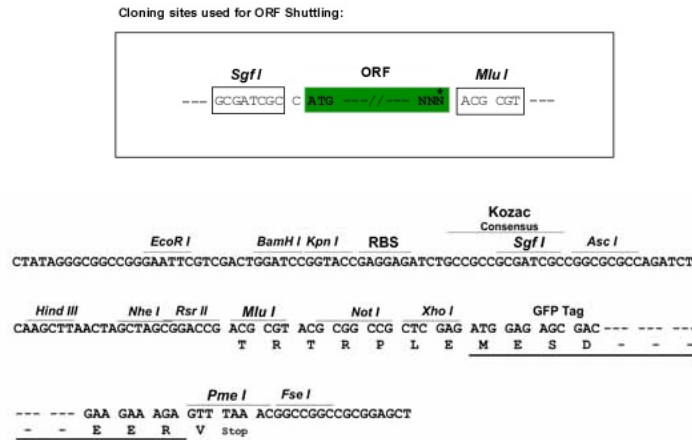
Protein Sequence: >MG221558 representing NM_011038
 Red=Cloning site Green=Tags(s)

MQQDGLSSVNQLGGLFVNGRPLPLDTRQQIVQLAIRGMRPCDISRSLKVSNGCVSKILGRYYRTGVLEPK
 CIGGSKPRLATPAVVARIAQLKDEYPALFAWEIQHQLCTEGLCTQDKAPSVSSINRVLRALQEDQSLHWT
 QLRSPAVLAPVLPSPHSNCGAPRGPHTGTSHRNRTIFSPGQAEALEKEFORGQYPDVARGKLAATSLP
 EDTVRRVWF SNRRAKWRRQEKLKWEAQLPGASQDLVTPKNSPGIISAQQSPGSVPSAALPVLEPLSPSFCQ
 LCCGTAPGRCCSSDTSSQAYLQPYWDCQSLLLPVASSYVEFAWPCLTTHPVHHLIGGPGQVPSTHCSNWP

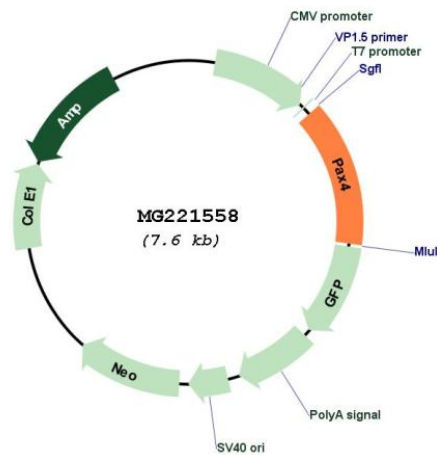
TRTRPLE - GFP Tag - V

Restriction Sites: SgfI-MluI

Cloning Scheme:



Plasmid Map:



ACCN: NM_011038

ORF Size: 1047 bp

OTI Disclaimer:	The molecular sequence of this clone aligns with the gene accession number as a point of reference only. However, individual transcript sequences of the same gene can differ through naturally occurring variations (e.g. polymorphisms), each with its own valid existence. This clone is substantially in agreement with the reference, but a complete review of all prevailing variants is recommended prior to use. More info
OTI Annotation:	This clone was engineered to express the complete ORF with an expression tag. Expression varies depending on the nature of the gene.
Components:	The ORF clone is ion-exchange column purified and shipped in a 2D barcoded Matrix tube containing 10ug of transfection-ready, dried plasmid DNA (reconstitute with 100 ul of water).
Reconstitution Method:	<ol style="list-style-type: none">1. Centrifuge at 5,000xg for 5min.2. Carefully open the tube and add 100ul of sterile water to dissolve the DNA.3. Close the tube and incubate for 10 minutes at room temperature.4. Briefly vortex the tube and then do a quick spin (less than 5000xg) to concentrate the liquid at the bottom.5. Store the suspended plasmid at -20°C. The DNA is stable for at least one year from date of shipping when stored at -20°C.
RefSeq:	NM_011038.2 , NP_035168.1
RefSeq Size:	1378 bp
RefSeq ORF:	1050 bp
Locus ID:	18506
UniProt ID:	P32115
Cytogenetics:	6 11.99 cM
Gene Summary:	Plays an important role in the differentiation and development of pancreatic islet beta cells. Transcriptional repressor that competes with PAX6 in binding to a common element in the glucagon, insulin and somatostatin promoters.[UniProtKB/Swiss-Prot Function]