

Product datasheet for **MG221520**

Rab11fip1 (NM_029423) Mouse Tagged ORF Clone

Product data:

Product Type:	Expression Plasmids
Product Name:	Rab11fip1 (NM_029423) Mouse Tagged ORF Clone
Tag:	TurboGFP
Symbol:	Rab11fip1
Synonyms:	2010200K21Rik; 4833414G05Rik; Rcp
Mammalian Cell Selection:	Neomycin
Vector:	pCMV6-AC-GFP (PS100010)
E. coli Selection:	Ampicillin (100 ug/mL)



[View online »](#)

ORF Nucleotide Sequence:

>MG221520 representing NM_029423
 Red=Cloning site Blue=ORF Green=Tags(s)

TTTTGTAATACGACTCACTATAGGGCGGCCGGGAATTCGTCGACTGGATCCGGTACCGAGGAGATCTGCC
 GCC**CGGATCGCC**

ATGTCCTGGCGCCTCAGCGGGCCGGGGCCGGGGACCATGTGGTCCCCTACCCAGTGCAGGTGACGG
 TGCTACAGGCGCGGGCTTGCGGGCAAGGGACCCGGGGCAGCAGCGACGCGTACGCGGTGATCCAGGT
 GGGCAAGGAGAAGTACGCCACGTGCGGTGTCGGAGCGCAGCCTGGGCGCGCCCGTGTGGCGGAGGAAGCC
 ACCTTCGAGTGCCTCCGCTGCTGCTCCGGGGCCGCGCCGGCCGCCACCTGCAGCTCACCG
 TCCTGCACCGCGGTTGCTCGGTCTCGATAAGTTCCTGGGCCGCGCCGAGGTGGACCTGCGGGAGCTGCA
 CCGGGACCAGGGCCGAGGAAGAAGCAATGGTACACCCTGAAGTCAAACCCGGGAAGAAGGACAAAGAG
 CGCGGGGAAATCGAGGTGCATCCAGTTTATGAGGAATAACATGACGGCCAGCATGTTTGACCTCTCCA
 TGAAAGACAAGTCCCGAATCCATTTGGAAAACGAAGGACAAGATCAAAGGGAAGAATAAGGACAGCGC
 CTCGGATACCGCCTCGGCATCGTCCCCAGCGTGACACCCTCAGTCGACAGTGACGATGAGTCTTCTCG
 AAAGACAAGAAAAGAAGTCAAAGATCAAGACTTTGTTTTCCAAGTCGAGTCTGCAGAAGACGCCCTCT
 CCCAGTCCATGTCTGTCTGCCACTTCCAAGTCAGACAAAGTCTGTTGCGGGCCGGAGACTTCCAGTC
 CCAGTGGGACGATGACGCCCATGAGGATGAGTCTCTCCGCTCGGATGTCATGTCTCACAAAGCGAACA
 TCCAGTACAGACCAACAACCGAACCCAGTCCAACCTCAGCCTTCCAAGAAAGAGGGGCTTTCCTTCTTG
 GGGCCTCCGGTCCAAGAATGACTCTCTTCCGCTCTACCGTCTGTATCAACGGGAACCCAGTTTACAT
 GGAGCAGCCGGAGGCCAGGAGTGAGATCAGAGAGAGCAGCCCTTAATTCCCATCCCCGAGGGCTTC
 AGGAGGAAGCATTTGTTCTCGTCCACTGAAAACCTGGCTGCCCGCTCTCCAAGGAACAGGGGAAGGAG
 GCGGCACATCTTCTGACAGGCGACTGTCGACTTTCCACCAAGGATTCATGAAGTCCATGTCTTTGCC
 ATCCTACCGCCCTGACCAAGTGGGGACAATAGAGAGAGCATGTCTCCAGCAAACGTGGAGGCTGCCAGA
 GAGACAAAAGACAGCAAGAAACAGGAGAGCAAGAAGTCTCTTTGCTTTCTGTTGACGGGAAAGAGGG
 ATGCGGGCGCTAAAGGCAGTGAAGCGAACCTTCCCAGTGTCTCAGAGAAAGAGAAGGAGAGGAAAGG
 CGCGCTCGTGGAAGCCCAGCTGCGGGAGGAAGACCTCATGAGAAGGCCTGAGAAAGATGCTCTACCTGTT
 GCCTCCCAGTGGGGCAGCTCCTTGAACCCCTTTGAGGACGTGCAGATCTCAGACCCGGGAGCCACCAGG
 AGTCCAGTCCGGAACCGAAACACCAGTTCCTGCGGCCAGGGTCCCCAGACCAAGGCTGTGAAGCCGAG
 GCCTCACCTGTGAAGCCATGAACACAACAGCCACCAAGATTGCAAACCTAGTTTGGGAACCCGACCC
 ATCATCACTGAGAACCTGATCAGCGAGGCCCTCATGAAGAAATACCAGCCCTCGGATCCCGCCTTTGCCT
 ACGCGCAGCTGACCCACGATGAGCTGATCCAGCTAGTCCCAAACAGAAGGAGACCATCAGCAAGAAGGA
 GTTTCAGGTGCGGGAGCTGGAGGACTACATCGACAACCTGCTAGTCAGAGTCATGGAGGAGACCCCAAC
 ATCCTCCGAGTCCCGGCCGAGATGGGCAAGAAGCCGGAAAGATG

AG**CGGACCG**ACGCGTACGCGGCCGCTCGAG – GFP Tag – GTTTAA

Protein Sequence:

>MG221520 representing NM_029423
 Red=Cloning site Green=Tags(s)

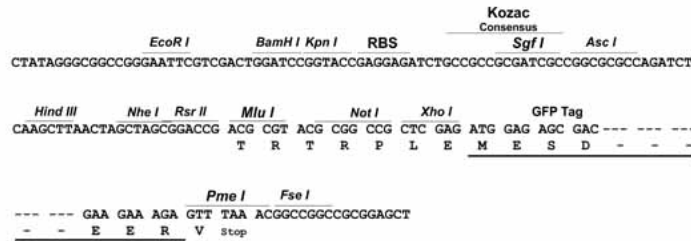
MSLAASAGRPGTMWSPTHVQVTVLQARGLRAKGGTSDAYAVIQVGKEKYATSVSERSLGAPVWREEA
 TFELPPLLSSGAAPAAAATLQLTVLHRALLGLDKFLGRAEVDLRELHRDQGRKKQWYTLKSKPGKKDKE
 RGEIEVDIQFMRNNMTASMFDSLMDKSRNPFGLKDKIKGKNKDSASDTASAIVPSVTPSVSDDESFS
 KDKKKKSKIKTLFSKSSLQKTPLSQSMSVLPSTKSDKVLRLAGDFQSQWDDDAHEDESSASDVMSHKRT
 SSTDQPNQSNFSLPKKEGLSFLGGLRSKNDLSRSTVCINGNHVYMEQPEARSEIRESSPNSPSPQGF
 RRKHLFSSTENLAARSPKEPGEGGTSSDRRLSDSSTKDSMKSMLPSYRPLTSGDNRESMPANVEAAR
 ETKDSKKQESKSSLLSLVTGKRDAAAKGESEPLPTVSEKEKERKALVEAQLREEDLMRRPEKDALPV
 ASQWSSLNPFEDVQISDPGATTESRSEPKPPVPAARVPQTKAVKPRPHVPMNTTATKIANSSLGAT
 IITENLISEALMKKYQSPDPAFAYAQLTHDELIQLVLKQKETISKKEFQVRELEDYIDNLLVRVMEETPN
 ILRVPAQMGGKAGKM

SGP**TRRRLE** – GFP Tag – V

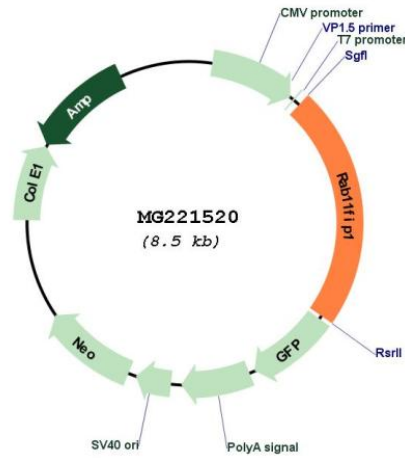
Restriction Sites: SgfI-RsrII

Cloning Scheme:

Cloning sites used for ORF Shuttling:



Plasmid Map:



ACCN: NM_029423

ORF Size: 1935 bp

OTI Disclaimer:	The molecular sequence of this clone aligns with the gene accession number as a point of reference only. However, individual transcript sequences of the same gene can differ through naturally occurring variations (e.g. polymorphisms), each with its own valid existence. This clone is substantially in agreement with the reference, but a complete review of all prevailing variants is recommended prior to use. More info
OTI Annotation:	This clone was engineered to express the complete ORF with an expression tag. Expression varies depending on the nature of the gene.
Components:	The ORF clone is ion-exchange column purified and shipped in a 2D barcoded Matrix tube containing 10ug of transfection-ready, dried plasmid DNA (reconstitute with 100 ul of water).
Reconstitution Method:	<ol style="list-style-type: none"> 1. Centrifuge at 5,000xg for 5min. 2. Carefully open the tube and add 100ul of sterile water to dissolve the DNA. 3. Close the tube and incubate for 10 minutes at room temperature. 4. Briefly vortex the tube and then do a quick spin (less than 5000xg) to concentrate the liquid at the bottom. 5. Store the suspended plasmid at -20°C. The DNA is stable for at least one year from date of shipping when stored at -20°C.
RefSeq:	NM_029423.2 , NP_083699.2
RefSeq Size:	6402 bp
RefSeq ORF:	1938 bp
Locus ID:	75767
UniProt ID:	Q9D620
Cytogenetics:	8 A2
Gene Summary:	A Rab11 effector protein involved in the endosomal recycling process. Also involved in controlling membrane trafficking along the phagocytic pathway and phagocytosis (By similarity).[UniProtKB/Swiss-Prot Function]