

Product datasheet for **MG221507**

Secisbp2 (NM_029279) Mouse Tagged ORF Clone

Product data:

Product Type:	Expression Plasmids
Product Name:	Secisbp2 (NM_029279) Mouse Tagged ORF Clone
Tag:	TurboGFP
Symbol:	Secisbp2
Synonyms:	2210413N07Rik; 2810012K13Rik; SB; SBP2
Mammalian Cell Selection:	Neomycin
Vector:	pCMV6-AC-GFP (PS100010)
E. coli Selection:	Ampicillin (100 ug/mL)



[View online »](#)

ORF Nucleotide
Sequence:

>MG221507 representing NM_029279
Red=Cloning site Blue=ORF Green=Tags(s)

TTTTGTAATACGACTCACTATAGGGCGGCCGGGAATTCGTCGACTGGATCCGGTACCGAGGAGATCTGCC
GCCCGCATCGCC

ATGGCGTCGGAGCGGCCGCGGGAGCCGGACGGCGAGGATAGCATCAAGTTGTCAGCTGATGTCAAACCAT
TCGTCCCTAAGTTTGTCTGGGCTCAACGTGGCGTGGTCAGAGTCCCTCAGAGACACGTGCTTCCCAGGCTG
TGGCGCCACCTACTATCCATTTGTACAGGAACCCAGCAGCTGAACAGAAAAATGTATCCCGAAGACATG
GCTTTCGGAGCCCCACCTTTCCAGCACAGTACGTGTCTTCTGAGATAGCGCTGCATCCTTTTGCCTATC
CCACTTACACCCTAGAGTCCGCACAGAGTGTGGTCTCAGTGCCAACCCTGCAGTACGACTACAGCCAAGC
ACGGTGTACCCAGGCTTTCGGACAGCAAAGCCCGCATGAGCACGTGTGCCCTCCACCTCAGGAAGCA
AAAGGTGATTTAAGAAAAACCTCTGATGAGAGAAGAGCATGTGAAGAGCAAAAGTCAAGCAGCAGAA
GGGCTGACAATGCGGTGCCCTGTGAGGCGAGACCAGCCAGGGGGTCCAGTCACTGTCTCTCGAAGTGA
GAGCAGTTTGAATCTGATGGTTACCACAAGCGACCCGACCGCAAGTCCAGAATCCTTGGCAAGAGTGA
TCTACCTCTAAACCTGAATTTGAGTTTAGTAGGTTAGACTTTCCTGAACTGCAGAGTCCAAAGAACAGTA
ACATGCCAGAGACACAGAAGCCGCCAGGTGGGGGCTCTTGGCCCTGCTGCCAGTAACATGCCCTCTCT
AGGAGACGTGGCAAGCCGTCGCAGATATGGTAGAGGGCAAAATGGTGAAGAGCGATCACACTGATGGA
GCTGTGACCAGTAATGCCACTACCAGTTCCTTTCATGTACCCAAGAGTTGTCTTGGACACCAATGGGTT
ATATTGTTGCGCAGACAGTGTCTCAGATTGAGCAGCAGCCACTGAAAATGTGACTTCCATGATAAACT
AAAGAAGACTACTTCATCAGCTGATGCTAAAAATGTTAGTGTGACATCTGAGGCTTTATCTTCAAATCCT
TCCTACAACAGAGAAAAGCGTGTATCCTGCTCAAAGGCCAAAGCATCACAAGGAGGTGAAGTGAAC
AAAACGAAAGCTCCAAAAAGAATAAGAAAAAGAAAGAGAAGTCTAAACCGAGTTATGAAGTCTCGACGT
TCAGGAGCCGCCAAGGATTGAAGATGCAGAGGAATTCCTCAACCTGTAGTTGCGTCCGAAAGAAGACAC
AGAGGGCAATCACGAAGCTTACAGTAAACAGCAGACGAGAATGAATTTAAAAAAGTGGGAAGAGA
GCCAGGTCCCAGTGCAGCTGGACCTGGGGGCGATGCTGGCCGCGCTGGAGAAGCAGCAGCAGCAGCAGCA
CGCCTCGCAGCCAAAGCCATCCTCCAGACCCGTCGTGTTCTCAGTTGGAGCAGTGCAGTCTGTCCAAG
GATGCCTCCTCCAGTGCAGGGGACGCCGCTCCAGTGCAGTGAAGACCCACACAACCCCTGGACTCCA
GTGCCCCCTGATGAAGAAGGGGAAGCAGAGGGAGATACCTAAGGCCAAGAAGCCCACTACTGAAGAA
GATAATTTTGAAGAACGGCAAGAGAGGATGCAGCAGCGACTCCAAGAAAGTGTGTGAGCCTGACGGTG
GCCAGTGTGACTCACAGGATGTGGAGAGTGGCGCCAGTAACCAACCCCAAGTCAAGGACACCCCAAG
GTCCAGAGAAGACAGAAGAAATCAGTGTCTTCTACACCTGTGGTTGAGGGTGCAGAGGAGCCAGCTGG
CACAGAGTTCCAGAGGGACCCAGAGGCTTGCCAGCCTGCCCTGCAGTGCACCTTCCCAAGATCCAC
AGCCGGAGGTTCCGGGACTACTGCAGCCAGATGCTTAGTAAAGAAGTAGATGCTTGTGTACGGGTCTGC
TCAAGGAGCTGGTGCCTTCCAAGACCGCATGTACCAGAAGGATCCCGTCAAGGCCAAGCAAAAACGGCG
GCTCGTGTGGGGCTGAGGGAGTCTGAAACACCTGAAGCTCAGGAAGTGAAGTGCATCATCTCTCT
CCCAACTGTGAGAAGACCCAGTCTAAAGGTGGGCTGGACGACACGCTGCACACCATCATCGACTGCGCT
GCGAGCAGAACATCCCTTCGTGTTGCACTCAATCGAAGGCTCTGGGGCGGAGCCTGAATAAAGCTGT
TCCTGTGAGCATTGTAGGGATCTTACAGTACGATGGGGCCAGGACAGTCCACAAGATGGTTGAGCTG
ACCATGGCAGCCCGTCAAGCATACAAGACCATGTTGGAGACAATGCGGCAGGAACAGGCAGGAGAACCTG
GACCTCAGTCCCCTCCAGCCACCCATGCAAGACCCATCCATCCACGGAAGAAGGCACCCTCCCTTC
CACTGGAGAAGAGCCACACTACATTGAGATTTGGAAAAAGCACCTGGAAGCGTACAGTGCAGCTGCCCTG
GAGCTGGAAGACTCACTGGAGGCGTCAACCTCTCAGATGATGAACCTTGAATTTA

ACGCGTACGCGGCCGCTCGAG - GFP Tag - GTTTAA

Protein Sequence: >MG221507 representing NM_029279
 Red=Cloning site Green=Tags(s)

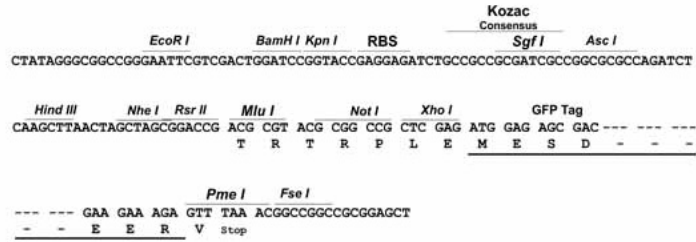
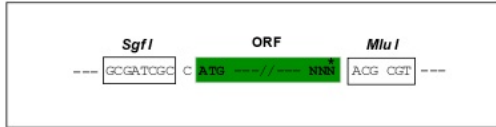
MASERPREPDGEDSIKLSADVDPFVVKFAGLNVAWSESSETRVFPGCAATYYPFVQEPPAAEQKMPEDM
 AFGAPTFPAQYVSSEIALHFPAYPTYTLESAQSVCSVPTLQYDYSQARCHPGFRTAKPRHEHVCPPPQEA
 KGVFKKKPSDERRACEEQKSSSRADNAVPCARPARGSSHLSSRTESSLKSDGYHKRPDRKSRLAKSA
 STSKPEFEFSRLDFPELQSPKNSNMPETQKPPRWGPLGPAASNMPLLGDVGKPVADMVEGKMKSDHTDG
 AVTSNATTSSPCTQELSWTPMGYIVRQTVSSDSAAATENVTSMINLKKTTSSADAKNVSVTSEALSSNP
 SYNREKRYPAPKAKASQGGELEQNESSKKNKKKKEKSKPSYEVLTVQEPPRIEDAEEFPNLSVASERRH
 RGQSPKLHKKQTQNEFKTSGKKSQVPVQLDLGGMLAALEKQQQQHASHAKPSSRPVVF SVGAVPVLSK
 DASSSERGRRSSQMKTPHNPLDSSAPLMKKGKQREIPKAKKPTSLKKIILKERQERMQQRLQESAVSLTV
 ASDDSQDVESGASNQTPSQDNPTGPEKTEESVSTPVVEGESEEPAGTEFQRDPEACQPAPDSATFPKIH
 SRRFRDYCSQMLSKEVDACVTGLLKELVRFQDRMYQKDPVKAKTKRRLVLGLREVLKHLKLRKLCIIIS
 PNCEKTQSKGGLDHTLTIIDCACEQNIPFVFALNRKALGRSLNKAVPVSIVGIFSYDGAQDQFHKMVEL
 TMAARQAYKTMLETMRQEQAQEGPQSPSPPMQDPIPSTEEGLPSTGEEPHYIEIWKKHLEAYSQRAL
 ELEDSLEASTSQMMNLNL

TRTRPLE - GFP Tag - V

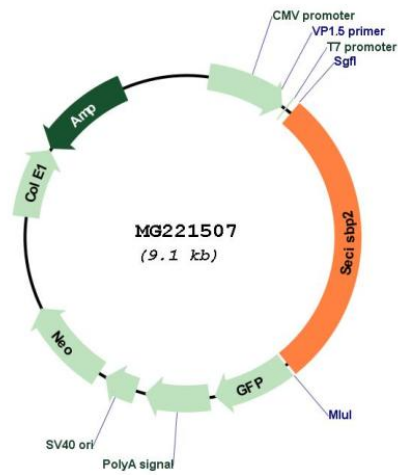
Restriction Sites: Sgfl-MluI

Cloning Scheme:

Cloning sites used for ORF Shutting:



Plasmid Map:



ACCN:	NM_029279
ORF Size:	2574 bp
OTI Disclaimer:	The molecular sequence of this clone aligns with the gene accession number as a point of reference only. However, individual transcript sequences of the same gene can differ through naturally occurring variations (e.g. polymorphisms), each with its own valid existence. This clone is substantially in agreement with the reference, but a complete review of all prevailing variants is recommended prior to use. More info
OTI Annotation:	This clone was engineered to express the complete ORF with an expression tag. Expression varies depending on the nature of the gene.
Components:	The ORF clone is ion-exchange column purified and shipped in a 2D barcoded Matrix tube containing 10ug of transfection-ready, dried plasmid DNA (reconstitute with 100 ul of water).
Reconstitution Method:	<ol style="list-style-type: none">1. Centrifuge at 5,000xg for 5min.2. Carefully open the tube and add 100ul of sterile water to dissolve the DNA.3. Close the tube and incubate for 10 minutes at room temperature.4. Briefly vortex the tube and then do a quick spin (less than 5000xg) to concentrate the liquid at the bottom.5. Store the suspended plasmid at -20°C. The DNA is stable for at least one year from date of shipping when stored at -20°C.
RefSeq:	NM_029279.2 , NP_083555.1
RefSeq Size:	2913 bp
RefSeq ORF:	2577 bp
Locus ID:	75420
Cytogenetics:	13 A5
Gene Summary:	The incorporation of selenocysteine into a protein requires the concerted action of an mRNA element called a sec insertion sequence (SECIS), a selenocysteine-specific translation elongation factor and a SECIS binding protein. With these elements in place, a UGA codon can be decoded as selenocysteine. The gene described in this record encodes a nuclear protein that functions as a SECIS binding protein. Mutations in a similar gene in human have been associated with a reduction in activity of a specific thyroxine deiodinase, a selenocysteine-containing enzyme, and abnormal thyroid hormone metabolism. Alternate splicing results in multiple transcript variants. [provided by RefSeq, May 2015]