

Product datasheet for **MG221495**

Adamts6 (NM_001081020) Mouse Tagged ORF Clone

Product data:

Product Type:	Expression Plasmids
Product Name:	Adamts6 (NM_001081020) Mouse Tagged ORF Clone
Tag:	TurboGFP
Symbol:	Adamts6
Synonyms:	A930019D11Rik; ADAM-TS6; b2b1879.1Clo; b2b2029Clo; b2b2182Clo; b2b2187.1Clo; b2b2228Clo
Mammalian Cell Selection:	Neomycin
Vector:	pCMV6-AC-GFP (PS100010)
E. coli Selection:	Ampicillin (100 ug/mL)
ORF Nucleotide Sequence:	>MG221495 representing NM_001081020 Red=Cloning site Blue=ORF Green=Tags(s)

TTTTGTAATACGACTCACTATAGGGCGGCCGGAATTCGTCGACTGGATCCGGTACCGAGGAGATCTGCC
GCC**GCGATCGCC**

ATGGAATTTCTGTGAAAACGTTGACTTGGATTCTGAGCCTCATCATGGCCTCATCGGAATTTTATAGTG
ACCACAGACTTTTCATATAGTTCTCAAGAGGAATTCCTGACTTATCTTGAACACTACCAGCTAACTATTCC
AATAAGAGTTGACCAAAATGGAGCTTTTCTCAGCTTTACTGTGAAAAATGATAAACACTCAAGAAGAAGA
CGGAGTATGGACCTTCTTGATCCACAGCAGGCAGTGTCTAAATTTTTTAACTTTTCAGCCTATGGCA
AGCACTTTACCTAACTTGACTCTCAATACAAATTTTGTGTCCAACATTTTACAGTAGAGTATTGGGG
GAAAGATGGACCCAGTGAAACATGATTTTTTAGACAACGTCACTACACAGGATACTTGAAGATCAA
CATAGTACAACAAAGTGGCTTTAAGCAACTGTGTGGATTGCATGGTATTATTGCTACAGAAGATGAAG
AATATTTTATTGAGCCTCTAAAGAATACTACAGAGGATCCAAACATTTTAGTTATGAAAATGGCCATCC
TCATGTTATTTACAAAAAGTCTACTCTTCAGCAACAACATATCTATGATCATTCTCATTGTGGGGTTTCA
GATCTCACAGGAAGTGGCAAACCTTGGTGGCTGAATAAGACATCATCTTTTCTTCTTTACCACCAATTA
ATGACACACATATTCATCACAGAAAAGAGAAGATCTGTGAGCACTGAGAGATTTGTGGAGACTTTAGTAGT
GGCAGACAAAAATGATGGTGGGCTACCATGGCCGTAAGACATTGAACATTATATTTAAGTGTGATGAAT
ATTGTTGCCAACTTTATCGTGACTCCAGTCTAGGAAACGTTGTGAATATATAGTGGCTCGCTTAATTG
TTCTCACTGAAGATCAGCCAACTTGGAGATAACCATCATGCAGACAAGTCCCTCGATAGCTTCTGTAA
ATGGCAGAAATCCATTCTCCCAAAAGTGTGAAACACCATCCAGAAAATGGGATGGCCACCAC
GATAATGCAGTTCTTATTACTAGATATGATATCTGCACGTATAAAAAACAAGCCCTGTGGAACACTGGGCT
TAGCCTCTGTGGCTGGAATGTGTGAGCCTGAAAGGAGCTGCAGCATTAAATGAAGACATTGCCTAGGCTC
GGCTTTTACCATCGCACATGAGATTGGTACAATTTTGGTATGAACCATGATGGAATTGGAATTTCTGT
GGGACGAAAGGTCATGAGGCAGCAAACTTATGGCAGCTCATATTACTGCAAATACCAATCCCTTCTCTCT
GGTCTGCCTGCAGCAGAGACTACATCACCAGCTTCTAGATTAGGCGCTGGTACTTGCCTTGATAATGA



[View online »](#)

```
GCCTCCAAAGCGTGACTTCTTTATCCAGCTGTGGCCCCAGGTCAGGTGTATGATGCTGATGAACAATGT
CGTTTCCAGTATGGAGCAACATCCCGCCAATGCAAATATGGGGAAGTGTGTAGAGAGCTCTGGTGCCTCA
GCAAAAGCAACCGCTGTGTACCAACAGTATTCCAGCTGCTGAGGGGACACTGTGTGACTGGGAATAT
TGAGAAAGGGTGGTGTATCAGGGAGATTGTGTTCTTTTGGCACATGGCCCCAGAGTATTGATGGGGGC
TGGGGTTCCTGGTCACTGTGGGGCAGTGCAGTAGGACCTGCGGAGGAGGTGTCTCTCGTCTCTAAGAC
ACTGTGACAGTCCAGCACCTTCAGGAGGTGGGAAATATTGCCTTGGTAAAAGGAAACGCTACCGCTCTTG
CAACACAGATCCATGCCCTTTGGGTTCCGAGATTTTCGAGAAAAACAGTGTGACACTGTGACAGTATG
CCTTCCGGGAAAGCATTATACTGAAACCCTATACTGGAGGTGGGGTAAAACCTTGTGCATTAATT
GCCTGGCTGAAGGCTATAATTTCTACACAGAGCGAGCTCCTGCTGTGATAGATGGACACAGTGCATGC
AGACTCACTGGATATCTGTATCAATGGAGAATGCAAGCACGTAGGTTGTGATAATATTTTGGGATCTGAT
GCTAGGGAAGATAGGTGCCGAGTCTGTGGTGGGATGGAAGCACCTGTGATGCCATTGAAGGGTTCTTCA
ATGACTCATTGCCAGAGGAGGTTATATGGAAGTGGTTCAGATACCAAGAGGCTCTGTTCATATTGAAGT
AAGAGAAGTTCCATGTCAAAAATTACATTGCTTTAAAATCTGAAGGGGATGTTACTACATTAATGGT
GCCTGGACTATTGACTGGCCTAGGAAATTTGATGTTTCGGGGACAGCTTTTCACTACAAGAGACCGACAG
ATGAACAGAATCCTTGAAGCTCTAGGACCCACCTCTGAGAACCTCATTGTAATGGTTCCTACTCCAAGA
ACAGAATTTGGGAATTAGGTACAAGTTCATGTTCCCATCGTTCGTAAGTGGCAGTGGAGATAATGAAGTT
GGCTTCATGTGGACTTATCAGCCCTGGGCGGAGTGTCTGCTACTTGTGCTGGAGGTGTCCAAAGACAAG
AAGTGGTCTGTAAAAGATTGGATGACAACCTCATTGTCCAGAACAATTTCTGTGATCCTGACAGTAAAGCC
ACCTGAAAATCAAAGAGCCTGCAACACTGAGCCTTGCCACCTGAATGGTTCATTGGAGACTGGTTGGAG
TGCAGCAAAGACTGTGATGGTGGGATGCGCACAAGGGCCGTGCTCTGCATCAGGAAAAGTTGGACCTCTG
AAGAGGAAACACTGGACTACGGCGACTGCTTAAACACCGGCCTGTGGAGAAAGAGTCTGCAACAACCA
GTCATGTCACCTCAGTGGGTAGCTTTGGACTGGTCCGAATGACTCCTAAATGTGGTTCAGGATTCAAG
CATCGGATTGTTCTGTGCAAGAGCAGTACCTTTCTAAAACATCCCAGCTGCACAATGCCAGAGGAGA
GCAAGCCTCCTGCTCGCATCCGCTGCAGTCTGGGCCGCTGCCCTCCTCCCGCTGGGATGACAGGAGACTG
GGCCAGTGTCTGCTCAGTGTGGTCTTGGACAACAAATGAGAACTGTCCAGTGCCTTCTATACTGGA
CAGGCGTCTGTTGACTGTCCAGAACTGTCCGGCCTCCATCCATGCAGCAGTGTGACAGCAAATGTGATA
GCACCCCTCTCTCCAGTACTGAAGAGTGCAAGATGTGAACAAAGTGGCTATTGCCACTGGTGTGAA
GTTCAAGTTCTGCAGTCGAGCATACTTCAGACAGATGTGTTGTAAGACCTGCCAAGGACAC
```

ACGCGTACGCGGCCGCTCGAG - GFP Tag - GTTTAA

Protein Sequence:

>MG221495 representing NM_001081020
 Red=Cloning site Green=Tags(s)

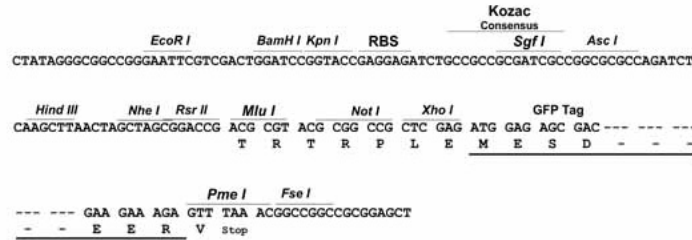
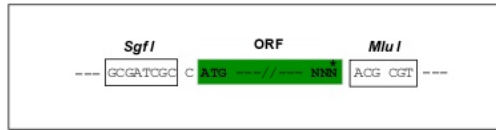
```
MEISWKTLTWILSLIMASSEFYSDHRLSYSSQEEFLTYLEHYQLTIPIRVDQNGAFLSFTVKNDKHSRRR
RSMDLLDPQQAVSKLFFKL SAYGKHFLNLTNTNFVSKHFTVEYWGKDPQWKHDFLDNCHYTYGLQDQ
HSTTKVALSNCVGLHGIATEDEEYFIEPLKNTTEDSKHF SYENHHPHVIYKKSTLQQQHIYDHSKCVS
DLTGSGKPWWLNKTSSFPSLPPINDTHIHRKRKRSVSTERFVETLVVADKMMVGYHGRKDI EHYIL SVMN
IVAKLYRDS S L GNVVNIIVARLIVLTEDQP NLEINH HADKSLDSFCKWQK S ILSHQSDGNTIPENGI AHH
DNAVLITRYDICTYKNKPCGTLGLASVAGMCEPERSCSINEDI GLGSAFTIAHEIGHNFGMNH D GIGNSC
GTKGHEAAKLM A AHITANTNPF SWSACSRDYITSFLDSGRGTCLDNEPPKRDFLYPAVAPGQVYDADEQC
RFQYGATSRQCKYGEVCRELWCLSKSNRCVTNSIPAAEGLCQTGNIEKWGYQGDVFPFTWPQSIDGG
WGSWSLWGECSRTCGGVSSSLRHCDSPAPSGGKYCLGERKRYRSCNTDPCPLGSRDFREKQCADFDSM
PFRGKHYNWKPYTGGGVKPCALNCLAEGYNFYTERAPAVIDGTQCNADSLD ICINGECKHV GCDN ILGSD
AREDRCRVCGDGSTCDAIEGFND SLPRGGYMEVVQIPRGSVHIEVREVSMSKNYIALKSEGDDYYING
AWTIDWPRKFDVSGTAFHYKRPTDEPESLEALGPTSENLIVMVL LQEQLGIRYKFNVP IVRTGSGDNEV
GFMWTYQPWAEC SATCAGGVQRQEVVCKRLDDNSIVQNNFCDPDSKPPENQRACNTEPCPPEWF IG DWLE
CSKTC D GGM RTRAVL CIRKVGPS E EETLDYGDCLTHRPVEKESCNQSCPPQWVALDWSECTPKCGSGFK
HRIVLCKSSDL SKTFPAAQCPEESKPPARIRCSLGRCP PPRWVTGDWQCSAQCGLGQQMRTVQCLSYTG
QASVDCPETVRPPSMQCCDSKCDSTPLSSTEECKDVNKVAYCPLVLKFKFC SRAYFRQMCCCKTCQGH
```

TRTRPLE - GFP Tag - V

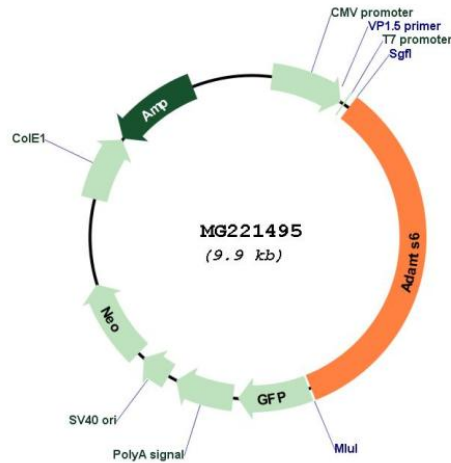
Restriction Sites: SgfI-MluI

Cloning Scheme:

Cloning sites used for ORF Shuttling:



Plasmid Map:



ACCN: NM_001081020

ORF Size: 3351 bp

OTI Disclaimer: The molecular sequence of this clone aligns with the gene accession number as a point of reference only. However, individual transcript sequences of the same gene can differ through naturally occurring variations (e.g. polymorphisms), each with its own valid existence. This clone is substantially in agreement with the reference, but a complete review of all prevailing variants is recommended prior to use. [More info](#)

OTI Annotation: This clone was engineered to express the complete ORF with an expression tag. Expression varies depending on the nature of the gene.

Components:	The ORF clone is ion-exchange column purified and shipped in a 2D barcoded Matrix tube containing 10ug of transfection-ready, dried plasmid DNA (reconstitute with 100 ul of water).
Reconstitution Method:	<ol style="list-style-type: none">1. Centrifuge at 5,000xg for 5min.2. Carefully open the tube and add 100ul of sterile water to dissolve the DNA.3. Close the tube and incubate for 10 minutes at room temperature.4. Briefly vortex the tube and then do a quick spin (less than 5000xg) to concentrate the liquid at the bottom.5. Store the suspended plasmid at -20°C. The DNA is stable for at least one year from date of shipping when stored at -20°C.
RefSeq:	<u>NM_001081020.2, NP_001074489.1</u>
RefSeq Size:	4822 bp
RefSeq ORF:	3354 bp
Locus ID:	108154
Cytogenetics:	13 D1