

Product datasheet for **MG221472**

Tmem184a (NM_144914) Mouse Tagged ORF Clone

Product data:

Product Type:	Expression Plasmids
Product Name:	Tmem184a (NM_144914) Mouse Tagged ORF Clone
Tag:	TurboGFP
Symbol:	Tmem184a
Synonyms:	Sdmg1
Mammalian Cell Selection:	Neomycin
Vector:	pCMV6-AC-GFP (PS100010)
E. coli Selection:	Ampicillin (100 ug/mL)
ORF Nucleotide Sequence:	>MG221472 representing NM_144914 Red=Cloning site Blue=ORF Green=Tags(s)

TTTTGTAATACGACTCACTATAGGGCGGCCGGAATTCGTCGACTGGATCCGGTACCGAGGAGATCTGCC
GCC**CGATCGCC**

ATGAGGAATGCGTCAGGGTTTCTGAAGACAGCCGGAGCCCCCTCGTGTCAGCGACCTGGCTTCCACCCA
GCCCCCTCCGGCAATGCCACAGTGGCAGCCGGGCCACAGATGGAGCGCGTGGACAACGGCTCGCAGGG
GGCCCCCAGCTTTCCTCACCAGCGCATTGGCCCCGAGGCGTTTCAGGCGTGTGGTATGGACTGCTCTG
CTGCTAACCGGCCACCAGATCTACTCCCACCTACGTTCTATACCGCCCCGAGAGCAGCGCTTCGTCA
TCCGCCTCCTGTTCAATTGTGCCATCTACGCCTTCGACTCCTGGCTCAGCCTCCTCCTTGGGGCCA
TCCTTACTACGTCTACTTCGACTCTGTGCGAGACTGCTACGAAGCATTGTGTCATCTACAGTTCCCTGACC
TTGTGCTTCCAATATCTGGGGGCGAGAGCGCCATCATGGCTGAGATCCGAGGCAAACCTATCAGGTCCA
GCTGCTTCTATGGGACCTGCTGCCTCCGTGGTATGTCCTACTCCATCACGTTCTTACGCTTCTGCAAACA
GGCCACACTCCAGTTCTGCATTGTGAAACCCGTTATGGCGCTGATCACCATCATCCTCCAGGCTTTTGAC
AAATACCAGATGGGGACTTCAACATCCACAGCGGCTACCTGTACGTGACCCTCGGTACAATGCCTCGG
TCAGCCTGGCTCTACGCTCTGTTCTTTCTACTTCGCTACCAGGGACCTCCTGAGACCCTTCGAGCC
GGTACTCAAGTTCCTCACCATCAAAGCCATCATCTTCTCCTTCTGGCAGGGAATGCTGTTGGCCATC
TTGGAGAGGTGTGGGTCATCCCTGAGGTCCAGGCCGTCAGGCCAGGCTGGGCTGGTACCCTGAT
CCGCTGGCTACCAGAATTCCTCATCTGTGTTGAGATGCTGTTCCGCTCCCTCGCCTGCGTTACGCCTT
CCCCAGCCAGGTGATTACAGAGAAGAAGAACTCACCAGTCCCGCCAGCACCTATGCAAAGCATATCCAGT
GGCTTAAAGGAGACCATCAGCCCACAGGACATTGTCCAGGACGCCATTATAACTTCTCGCCAGCCTACC
AGCAGTACACACAGCAGTCCACACATGAAGCTCCTGGGCTGGCCAGGTTGGCCACCCAGCACCAGTAC
CCACCCCGGCCAGCCAGTGGCTCTGGAGGTGTAAGAAGAGTCGCAACATAGAGAAACGCATGCTGATT
CCCTCAGAGGACCTG

ACGCGTACGCGGCCGCTCGAG - GFP Tag - GTTTAA



[View online >](#)

Protein Sequence: >MG221472 representing NM_144914
Red=Cloning site Green=Tags(s)

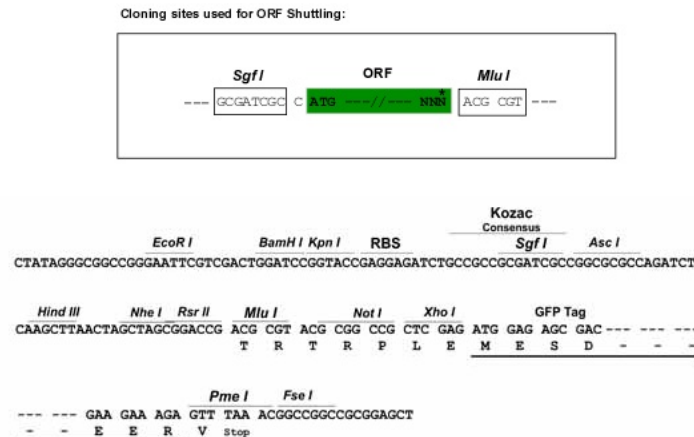
MRNASGFLKTAGAPLVSATWLPSPPPAMPTVAAGPQMERVDNGSQGAPQLFLTSALARGVSGVFWVTAL
 LLTGHQIYSHLRSYTAPREQRFVIRLLFIVPIYAFDSWLSLLLLGGHPYVYFDSVRDCYEFVIYSFLT
 LCFQYLGGESAIMAEIRGKPIRSCFYGTCCLRGMSYSITFLRFCKQATLQFCIVKPMALITIIILQAFD
 KYHDGDFNIHSGYLYVTLVYNASVSLALYALFLFYFATRDLRLPFEPVLKFLTIKAIIFLSFWQGMLLAI
 LERCGVIPEVQAVDGRVAGTLAAGYQNFLICVEMLFASLALRYAFPSQVYSEKKNSPVPPAPMQSISS
 GLKETISPDIVQDAIHNFSPAYQQYTQSTHEAPGPGQGGHPAPSTHPGPASGSGGGKKSRIEKRMLI
 PSEDL

TRTRPLE - GFP Tag - V

Restriction Sites:

SgfI-MluI

Cloning Scheme:



ACCN: NM_144914

ORF Size: 1275 bp

OTI Disclaimer: The molecular sequence of this clone aligns with the gene accession number as a point of reference only. However, individual transcript sequences of the same gene can differ through naturally occurring variations (e.g. polymorphisms), each with its own valid existence. This clone is substantially in agreement with the reference, but a complete review of all prevailing variants is recommended prior to use. [More info](#)

OTI Annotation: This clone was engineered to express the complete ORF with an expression tag. Expression varies depending on the nature of the gene.

Components: The ORF clone is ion-exchange column purified and shipped in a 2D barcoded Matrix tube containing 10ug of transfection-ready, dried plasmid DNA (reconstitute with 100 ul of water).

Reconstitution Method:

1. Centrifuge at 5,000xg for 5min.
2. Carefully open the tube and add 100ul of sterile water to dissolve the DNA.
3. Close the tube and incubate for 10 minutes at room temperature.
4. Briefly vortex the tube and then do a quick spin (less than 5000xg) to concentrate the liquid at the bottom.
5. Store the suspended plasmid at -20°C. The DNA is stable for at least one year from date of shipping when stored at -20°C.

RefSeq: [NM_144914.3](#), [NP_659163.3](#)

RefSeq Size: 1859 bp

RefSeq ORF: 1278 bp

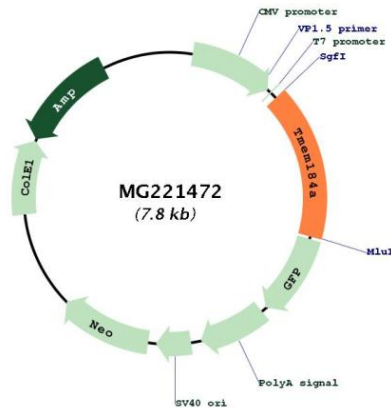
Locus ID: 231832

UniProt ID: [Q3UFI6](#)

Cytogenetics: 5 G2

Gene Summary: Acts as a heparin receptor in vascular cells (By similarity). May be involved in vesicle transport in exocrine cells and Sertoli cells (PubMed:18321981, PubMed:19097053).[UniProtKB/Swiss-Prot Function]

Product images:



Circular map for MG221472