

Product datasheet for **MG221457**

Pcdha6 (NM_007767) Mouse Tagged ORF Clone

Product data:

Product Type:	Expression Plasmids
Product Name:	Pcdha6 (NM_007767) Mouse Tagged ORF Clone
Tag:	TurboGFP
Symbol:	Pcdha6
Synonyms:	CNR; Cnr2; Crnr2
Mammalian Cell Selection:	Neomycin
Vector:	pCMV6-AC-GFP (PS100010)
E. coli Selection:	Ampicillin (100 ug/mL)



[View online »](#)

ORF Nucleotide Sequence:

>MG221457 representing NM_007767
 Red=Cloning site Blue=ORF Green=Tags(s)

TTTTGTAATACGACTCACTATAGGGCGGCCGGGAATTCGTCGACTGGATCCGGTACCGAGGAGATCTGCC
 GCC**CGGATCGCC**

ATGGATTTTACCACTGAAGGCCGACTGGGAACACGGTGTATGCTGCTCTCGCTCCTGCTCCTCGCAGCCT
 GGGAGGCAGGGAGCGGCCAGCTTCACTACTCCGTCAGAGGAGGCCAAACACGGCACCTTCGTGGGCCG
 CATCGCGCAGGACCTGGGGCTGGAGCTGACGGAGCTGGTCCCCCGCTGTTACAGGTGGCGTCCAAGGAC
 CGCGGGGACCTTCTGGAGGTAATCTGCAGAATGGCATTGTTGTTGTGAATTCTCGGATCGACCGGGAGG
 AGCTGTGCGGGCGGAGCGTGGAGTGTAGCATCCACCTGGAGGTGATCGTGGACAGGCCGCTGCAGGTTTT
 CCACGTGGAGGTGGAGGTGAGGGACATTAATGATAACCCGCTGTGTTCTCAGTAAAGGAGCAAAGAATG
 TTAATTTACGAATCTAGGCTGCCAGATTCTTTGTTCCACTAGAGGGCGCATCAGATGCTGATGTTGGAT
 TAAATTTATGTTAACCTATAAACTCAGTCCCAGCGAATACTTTGGGCTAGATGTGAAATCAAACAGCGA
 TGGCAACAAACAAATTAGACTCTTGTGAAAAATCCTTGGACAGAGAGGATGCTCCTGAGCATAAGCTA
 CTGCTGACAGCCACGGATGGAGGCAAACCTGAGCTCACAGGCTCTGTTACGCTGCTGGTCACTGTGCTGG
 ATGTGAATGATAACGCCCTACTTTCCAGCACCTGAGTATGAAGTGAGAATCTTGGAAAACCTCAGACAA
 CGGAACGACAGTTATTAGACTGAATGCTTCTGACAAGGATGAAGGGACGAATTCAGCAATTTCTGACTCT
 TTTAATAGACTGGTGCCGCCAAGACTCTTGAGCAGTTTAGCATAGATGCAGATACAGGAGAAATCATAA
 CTCAAGGAAATTTGGACTTTGAGCAAGTAGATGTCTACAAAATCCACGTTGATGCGACGGACAAAGGACA
 CCCTCCGATGGTGGGCCATTGCACTGTTTTAGTGAAGGTATTGGATGAGAACGACAATGTGCCTCAGATC
 ACTTTGACTTCTTATCCCTGCCTGTTGAGAGGACGCTGCACTGAGTACTGTCAATGCTCTAATTAGCC
 TTTCCGATCTGGACTCTGGATCCAACGGGACGGTGAACCTGCTCCCTGAGTCCCTCATGTCCTTCAAGT
 GGTGTCCACCTTCAAGAATTAATTCGCTTGTGTTGGACAGCGCCCTGGACCGAGAGACCACAGCTGAC
 TATCAGGTGGTGGTACAGCGCGGGACGGGGTCTCCTTCTTTGTGACCACGGCTAGCGTGTCTGTGG
 AGGTGGCCGATGTGAACGACAATGCGCCTTCAATTTGCGCAGCCTGATTACACGGTGTTCGTGAAGGAGAA
 CAACCCTCTGGAGCGCACATCTTACAGTATCGGCGATGGACGCGGATGCGCAGGAGAACGCGCTGGT
 TCCTACTCGTGGTGGAGCGGAGGGTGGGCGAGCGCTTGTGTCGAGCTATGTGCTGTGCACGGGAAA
 GCGGCAAGGTGTTGCTCTGCAGCCTCTGGACATGAGGAGCTGGAACCTGCTGCAGTTCAGGTGAGCGC
 GCGGGATGCTGGTGTGCCTGCCCTGGGAGCAATGTGACTCTGCAGGTGTTTGTGCTGGATGAGAACGAC
 AATGCGCCACGCTGCTTGGACCTTGGACACCAGGATCTGGTGGTGTAGTGAGCGAACTTGTGTCACCTT
 CAGTGGGTGCTGGCCAGGTGGTCAAAAGGTGCGTGCAGTAGATGCGGATTCTGGCTATAATGCCTGGCT
 GTCTTATGAGCTGCATCCTTTAGCAGGTGGAACGCGGAGTCTGTTTAGGGTAGGTCTGTACACGGGCGAG
 ATCAGTACCACGCGTGCCTTGGAGGAGCAGATGCACCACGCCATCGCCTATTAGTGTGGTGAAGGACC
 ACGGGGAGCCAGCGCTGATTGCCACAGCCACTGTGTTAGTGTCTCTGGTTGAGAACAGCCAGACTCCAAA
 AGCCTCTTCGCGAGCGCAAGGTGCCACTGGCCAGGAAGTTTCGTTAGTGAATGTCAACGTGTACCTGATC
 ATTGCCATCTGTGCGGTGTCCAGCCTACTAGTTCTAACCTCATGGTATACACCGCACTGCGGTGCTCAG
 TTCCACCTACAGAGGGTGTGTGCGGGCAGGGAAGCCTGTGCTGGTGTGCTCTAGTGCGGTAGGGAGCTG
 GTCTACTCACAGCAGAGGAGACAGAAGTTTGTCTGGAGAGGGACCACCCAAAACCGATCTCATGGCC
 TTCAGCCCGAGTCTTCTCCTTGTCCGGTGTGGGTGAGCATCAGGATTTGAACGACGATCATTGCTCAA
 GACCCCGCAGCCCAACCTGACTGGCGTACTCTGCCTCGCTAAGAGCAGGCATGCACAGCTCTGTGCA
 CCTGGAGGAGGCTGGCATTCTACGGGCTGGTCCAGGAGGGCTGATCAGCAGTGGCCAACAGTATCCAGT
 GCAACACCAGAACCTGAGGCAGGAGAGGTGTCCCTCCGGTGGGCGCCGGTGTCAACAGCAACAGCTGGA
 CCTTTAAATACGGACCAGGCAACCCAAACAGTCCGGTCCCGGTGAGTTGCCAGACAAATTCATTATCCC
 AGGATCTCCTGCAATCATCTCCATCCGGCAGGAGCCTGCTAACAAACAAATTGACAAAAGCGATTTATA
 ACCTTCGGCAAAAAGGAGGAGACCAAGAAAAAGAAGAAAAAGAAGGGTAACAAGACCCAGGAGAAAA
 AAGAGAAAAGGAAACAGCACGACGACAACAGTGACCAG

AG**CGGACCG**ACGCGTACGCGGCCGCTCGAG - GFP Tag - GTTTAA

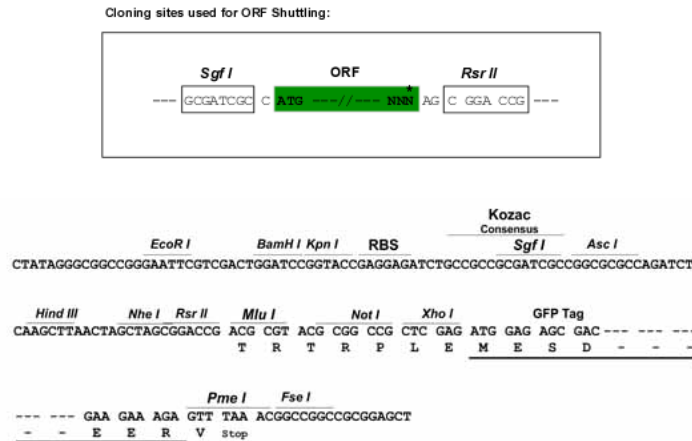
Protein Sequence: >MG221457 representing NM_007767
 Red=Cloning site Green=Tags(s)

MDFTEGRLGTRCMLLSLLLLAAWEAGSGQLHYSVPPEAKHGTFVGRIAQDLGLELTELVPRLFRVASKD
 RGDLLLEVLQNGILFVNSRIDREELCGRSVECSIHLEVI VDRPLQVFHVEVEVRDINDNPPVFSVKEQRM
 LIYESRLPDSLFPLEGASDADVGLNSMLTYKLSPEYFGLDVKSNSDGNKQIRLLLLKSLDREDAPEHKL
 LLTATDGGKPEL TGSVQLLVTVLDVNDNAPTFFQHPEYEVRILENSDNGTTVIRLNASDKDEGTNSAISYS
 FNRLVPPKTLQFSIDADTGEIITQGNLDFEQVDVYKIHVDATDKGHPPMVGHCTVLVKVLDENDNVPQI
 TLTSLSLPVREDAALSTVIALISVSDLDSGNSGQVTCSLSPHVPFKLVSTFKNYSYSLVLDALSALDRETTAD
 YQVVVTARDGGSPSLWTTASVSVEVADVNDNAPSFAQPDYTVFVKENPPGAHIFTVSAMDADAQENALV
 SYSLVERRVGERLLSSYVSVHAESGKVFALQPLDHEELELLQFQVSARDAGVPALGSNVTLQVFLDEND
 NAPTLGWPWTPGSGGVSELVSPSVGAGQVTKVRAVDADSGYNLAWLSEYELHPLAGGTRSLFRVGLYTGE
 ISTTRALEEADAPRHLLVLVKDHGEPAL IATATVLVSLVENSQTPKASSRAQGATGQEVSLVNVNYYLI
 IATCAVSSLLVL TLMVYALRCSVPPTGVCGAGKPVLCSSAVGSWSYSQRRQKVCSEGGPPKDLMA
 FSPSLPPCPVGEHQDLNDDHCSRPRQPNPDWRYASASLRAGMHSSVHLEEAGILRAGPGGPDQQWPTVSS
 ATPEPEAGEVSPVAGVNSNSWTFKYGPGNPKQSGPGELPKDFIIPGSPAIIISIRQEPANNQIDKSDFI
 TFGKKEETKTKKKKKKGNKTQEKKEKGNSTTDNSDQ

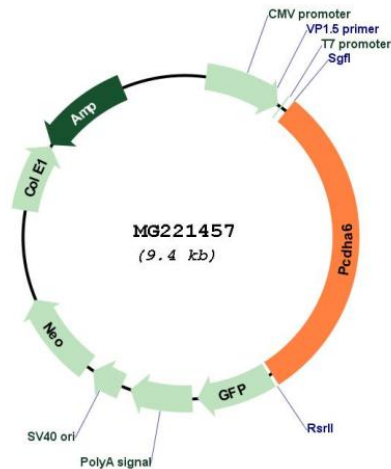
SGPTRRRLE - GFP Tag - V

Restriction Sites: SgfI-RsrII

Cloning Scheme:



Plasmid Map:



ACCN: NM_007767

ORF Size: 2838 bp

OTI Disclaimer: The molecular sequence of this clone aligns with the gene accession number as a point of reference only. However, individual transcript sequences of the same gene can differ through naturally occurring variations (e.g. polymorphisms), each with its own valid existence. This clone is substantially in agreement with the reference, but a complete review of all prevailing variants is recommended prior to use. [More info](#)

OTI Annotation: This clone was engineered to express the complete ORF with an expression tag. Expression varies depending on the nature of the gene.

Components: The ORF clone is ion-exchange column purified and shipped in a 2D barcoded Matrix tube containing 10ug of transfection-ready, dried plasmid DNA (reconstitute with 100 ul of water).

Reconstitution Method:

1. Centrifuge at 5,000xg for 5min.
2. Carefully open the tube and add 100ul of sterile water to dissolve the DNA.
3. Close the tube and incubate for 10 minutes at room temperature.
4. Briefly vortex the tube and then do a quick spin (less than 5000xg) to concentrate the liquid at the bottom.
5. Store the suspended plasmid at -20°C. The DNA is stable for at least one year from date of shipping when stored at -20°C.

RefSeq: [NM_007767.4](#)

RefSeq Size: 5242 bp

RefSeq ORF: 2841 bp

Locus ID: 12937

Cytogenetics: 18 B2- B3