

Product datasheet for **MG221440**

Cntnap3 (NM_001081129) Mouse Tagged ORF Clone

Product data:

Product Type:	Expression Plasmids
Product Name:	Cntnap3 (NM_001081129) Mouse Tagged ORF Clone
Tag:	TurboGFP
Symbol:	Cntnap3
Mammalian Cell Selection:	Neomycin
Vector:	pCMV6-AC-GFP (PS100010)
E. coli Selection:	Ampicillin (100 ug/mL)
ORF Nucleotide Sequence:	>MG221440 representing NM_001081129 Red=Cloning site Blue=ORF Green=Tags(s)

TTTTGTAATACGACTCACTATAGGGCGGCCGGGAATTCGTCGACTGGATCCGGTACCGAGGAGATCTGCC
GCC**CGATCGCC**

ATGGCACGGGTCAACGGAGCATTCTGGATGCGTTGCTGCTTCTGCTGCTGTCTGTTCAGACCCTGC
CCCTAGTAGCAGCAGGAGATCCACACAATTGTGATGCTCCGTTGGCTTCTCTTTGCCTCAGTTATCCTT
CAGCAGCTCCTCACAGCTGTCCAGCAGTCATGGCCCTGGCTTTGCAAGACTAAATAGAAGAGATGGAGCT
GGTGGATGGACACCGCTTGATCAAATAAATATCAGTGGCTGCAGATTGACCTTGAGAACAAGATGGAGG
TCACTGTGTGGCCACCCAGGGTGGATACGGGAGTTCTGACTGGGTGACCAGTTACCTCCTGTTCAG
TGATGGTGAAGGAACCTGAAACAGTATCATCAAGAAGAAAGCATCTCGGGATTTCCAGGAAACACAAAT
GCAGACAGTGTGGTACAATATAGTCTCCAGCCTTCTTCCACACCAGTTCTGCGCTTCTCCCTTAA
CCTGGAACCTAAAGGCAGGATTGGGATGCGGATAGAAGTATATGGGTGTTCATACAAATCTGAGGTGGT
TTATTTTGGATGGACAAAGTTCTCTGCTCTACAAATTTGATAACGGAGCCATAAGACCAGTAAAGAGAGTT
ATTTCTTTGAAATTTAAAGCCATGCAGAACAGCGGGATTATTTCCATGGAAAAGGACAACATGGGACAC
ATATTGTTTTGGAATTAACAAAGGAAAGCTTGTGTTTTATCTTAATTCAGGCGATGGAAACCTGCCTCC
TGTTAATTTCTATCATGAACCTCACCTTAGGCAGCCTTCTGGATGACCGGCACTGGCACTCTGACTCATT
GAGCTCCATAATATGCATATGAACCTCACCTGGACAAATACATGCATCATGTTTCATGTGAACAAGGAAA
CCAGTTACTTGGATCTTAATTTTGGATCAGCTTTGGAGAAATCCTGATGCCTGGAGGGCGTTTCTGAC
ATTTCCACATAAAAAATTTTCATGGATGTTTAGAAAATATCTATTATAACGGAGTCAATATTATTAATTA
GCCAAGAAACATGAATCACAATCCTAATTAAGGGAAATGTGTCCTTACATGCCACAACCACAGACAA
TTCCAGTGACTTTCTGAGTTCTGGGAGTTACCTGGCTTTGCCAAGTAGTTTAAGGGAAGATAAAATGTC
CCTCGCTTTTTCAGCTTCCAACATGGAACAAGGCAGGACATGTGTTTTTAGCCAAGTGGGACAGGTTCA
GGAAGTTTGGTCTGTTTCTTAAGAAATGGAAAACCTCACTGAACCTCTCTGAGCCTGGTCAACCTTGC
AGAGCATCACAAACAGGTGCCGTACTGAATGATGGGCTATGGCACTCAGTTCCGTGTCTGCTAAGGGTAG
CTACCTAAGCCTTCTGGTAGAGACTGCTCAGACCTGATGTCTGTGGAGATTCATTTGGGCGAC
ACTTACTATTTTGGAGGTTGTCCCAACAACAGCTTAGCTTTGGATGTGAACATTTTGGAGGCTTCC
AGGGCTGCCTGAGGCTCATCTCTGTTGGTGACAAAGTAGTGGATCCTATTGCAGTACAGCAGGGAGTGCT



[View online »](#)

GGGCAGCTTCAGTGACCTCCAGATAGACTCCTGTGGCATCATAGACCGGTGTTTGCCAAGCTACTGTGAG
CATGGGAGTAGATGTACCCAGTCATGGGACACTTTCCTGTGACTGTGAAGGCACGGGCTACACTGGAA
CAACCTGCCATTCTCCATCTATGAACAGTCTTGTGAAGCCCACAGGCACAGAGGTAGCCCTTCTGGACT
TACTACATTGATGTAGATGGAAGTGGACCACTGGCACCATTCTTGTATACTGCAATATGACAGCAGAC
ACAGCATGGACTGTTGTTTCAGCATGGAGGCCCGATGTAGTGACAGTCAAGGTGGTCCAGAAGGACACA
TGCATTCTGCAACCTTCTCCTATGCTGCCAATGCAGCACAGCTGCATGCTGTGGTGAATGTTGCAGAGCA
CTGTGAGCAGCAGGTGGACCTACAATGTAGGACCTCAGGGCCCTCAGATACAGGAGATGGAACCTCCCTG
AGCTGGTGGGTTGGAAGAAGCAATGAAACATACACTTACTGGGGAGGTTCTCTTCTAATCCTCAAAAGT
GTACTTGTGGATTGAAGGGAAGTGCATTGATTCTCAATACCACTGCAACTGTGATGCTGACCGAATGA
ATGGACCAGTGACACAATAGTCCTGTCTCATAAGGAGCACCTGCCCGTCACTGAAATGGTGGTGACAGAC
ACAGGCCGACCATACTCTGAAGCTGCTTATACACTGGGGCCTTTGCTATGCCAGGAGACAAGTCATTTT
GGAACCTCAGTTCCTTCAACACCGAGGCTTCTTACCTTCATTTCCCAACCTTCCGTGGAGAGCTCACCGC
AGATGTGCACTTCCTTTTAAGACCACCATTTCTCTGGTGTGTTTCATGGAGAACCTGGGAATCACTGAC
TTCATCAGAATAGAGTTGCGTGTCCCACAGAAGTGACCTTTTCTTTTGTGTTGGGAATGGACCTGTG
AGCTCACTATACAGTCACCGACTCCCTTAAATGACAACCGGTGGCATCATGTGAGAGCAGAAAGGAATGT
CAAGGGTGCATCTCTTCAGGTAGACCAACTCCCTCAGAAGACACAGTCCACTCCTGCTGATGGACATGTT
CGACTACAACCAACAGCCAGCTCTTATTGGGGGACGGCCAGCAGGCAGAAGGGCTTCTGGGATGTA
TCCGGTCCCTTCAGGTGAATGGAATGGCACTAGACCTGGAGGAAAGGGCTGTAATGACACCAGGAGTGGA
GCCAGGATGTTTCAGGTCACTGCAGCAGCTATGGACACCTGTGTCGAAATGGGGGAATGTGTCAGAGAAA
CACAGAGGGATTGCTTGTGACTGTGCCTTCTCTGCCTACGATGGGCCACTGTGCTCATATGAGATTTCTG
CATATTTTGAACGGGTTCTCAGTGACCTATAATTTTCAAGAATATCCACCCTGAGTGCAAACACCAG
CTACCTGGCTTCTTATTGCATGGGGATGTACTGTCCAGAGAAACCATCACGCTGAGCTTCCGAACC
ACACAGACACCATGCTTATTGCTTTATGTGACCTCTTTTTATGAGGAATACCTTTCCATTATCTGGCCA
ACAATGGAAGTTTGCAGGTGAGGTACAAGTTGGACAGACATCGGAATGCAGATGCCTTCAACTTTGACCT
TAGAAACTTAGCAGATGGTCACTTTACCAGCTGACGATTAACAGGGAAGAAGCAGTAGTCTCTGTAGAG
GTTAACCCAGAGTACAAAGAGGCAAGTCATCTTGTCTCAGGGACTGAATTCATGCTGTCAAATCGCTCG
TATTGGGAAAGTTTTAGAACCCTGGATGCTGATCCTGAAACACAGCAGGCAGCCGCTCAGGGCTTAC
AGGCTGCCTCTCTTGTGAGATTTGGCCTGGAAGTCCCACTGAAGGCTGCACTGAATCAAACCGGGCT
AGAGTCACTATCAAGGCAGTGTGGCTGCTGCAGCTCATTGTGCAGAAGGCCCTGGTCTGCAGAGAGGA
AACTGTCTCCAGGGCCCTCATGGATGCAGGTCATTCTGGATCCGCAGAAGATAGACAGCCCTTCTTAA
CACAGACAGGAGTGACCCTGGGTCATTGGAGGAATAACAGCAGTTGTGATATTTATTTGCTCTGTGTG
TCTGCCATAGCCATACGGGTTTCAACAGAGAAGATTACACCAAAAAACGAGTCAACAGTTTCAAAAA
CTGAAGAGTGC

ACGCGTACGCGGCCGCTCGAG - GFP Tag - GTTTAA

Protein Sequence: >MG221440 representing NM_001081129
 Red=Cloning site Green=Tags(s)

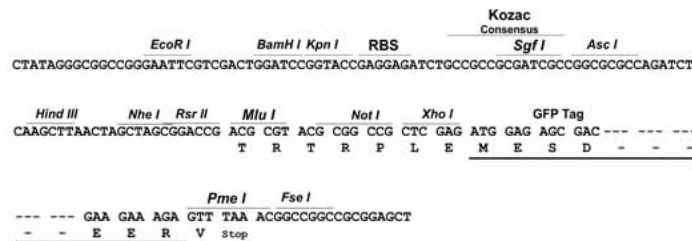
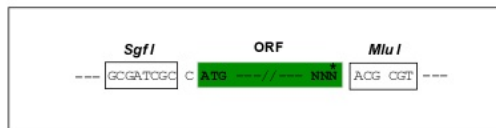
```
MARVNGAFLDALLLLLLSVQTLPLVAAGDPHNCDAPLASSLPQLSFSSSSQLSSSHGPGFARLNRRDGA
GGWTPLVSNKYQWLQIDLGERMEVAVATQGGYGSSDWVTSYLLMFSDDGGRNWKQYHQEESI SGFPNTN
ADSVVQYSLQPSFHTRFLRFLPLTWNPKGRIGMRIEYVYVYFDGQSSLLYKFDNGAIRPVREV
ISLKFKAMQNSGIFHKGQHGTHIVLELNKGLVYVYVYVYVYVYVYVYVYVYVYVYVYVYVYVYVYVY
ELHNMHMNFTLDKYMHHVHVNKETS YLDLNF EISFGEILMPGGRFLTFFPHKNFHGCLENIYYNGVNI IKL
AKKHESQILIKGNVSFTCPQPQTIPVTFLLSSGSYLALPSSLREDKMSLAFQLRTWNKAGHVFFSQVGHGS
GSLVLFKNGKILNLSEPGQLQSITTGAVLNDGLWHSVVSASAKGSYLSLLVDGDTAQTLMSVEIHLGD
TYFFGGCPNNSFFGCEHSFGGFQGLRLISVGDKVVDP IAVQQGVLGSFSDLQIDSCGIDRCLPSYCE
HGSRCTQSWDTFSCDCEGTGYTGTTCSSIEQSCAEHRHRGSPSGLYYIDVDGSGPLAPFLVYCNMTAD
TAWTVVQHGGPDVVTVRGGPEGHMHSATFSYAANAQLHAVVNVAEHCEQQVDLQCR TSGP SDTGDG TSL
SWWVGRSNETYTYWGGSLPNPQKCTCGFEGNCIDSQYHCNCDADRNEWTSDTIVLSHKEHLPVTEMVVD
TGRPYSEAYTLGPLL CQGDKSFWNSASFNTEASYLHFPTFRGELTADVHFLFKTTISSGVF MENLGITD
FIRIELRAPTEVTF SFDVGNPCELTIQSP TPFNDNRWHHVRAERNVKGASLQVDQLPQKTQSTPADGHV
RLQLNSQLFIGGTASRQKGLGCI RSLQVNGMALDLEERAVMTPGVEPGCSGHCSYGHLCRNGGMCQEK
HRGIACDCAFSAYDGPLCSYEISAYFETGSSVTYNFQEYSTLSANTSYLASSLHGDVILSRETITLSFRT
TQTPCLLLYVTSFYEEYLSIILANNGSLQVRYKLD RHRNADAFNFDL RNLADGHFHQLTINREEAVVSVE
VNQSTKRQVILSSGTEFNAVKSLVLGKVL EPLDADPETQQA AAGFTGCLSSVRFGL EPLKAALNQNR
RVTIQGSVAAAHAEGP GSAERKLSGP GSPMDAGHSGSAEDRQPLPNTDRSDPGVIGGITAVVIFILLCV
SAIAIRVHQRRRLHQKNESTVSKTEEC
```

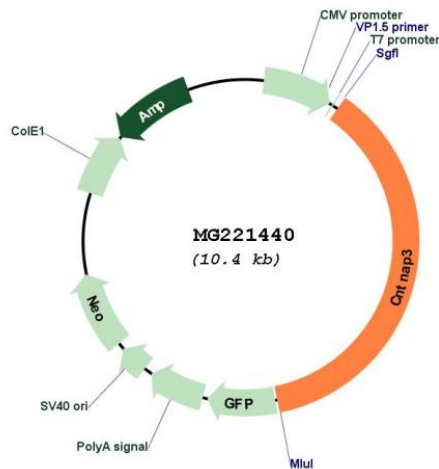
TRTRPLE - GFP Tag - V

Restriction Sites: SgfI-MluI

Cloning Scheme:

Cloning sites used for ORF Shutting:



Plasmid Map:


ACCN: NM_001081129

ORF Size: 3861 bp

OTI Disclaimer: The molecular sequence of this clone aligns with the gene accession number as a point of reference only. However, individual transcript sequences of the same gene can differ through naturally occurring variations (e.g. polymorphisms), each with its own valid existence. This clone is substantially in agreement with the reference, but a complete review of all prevailing variants is recommended prior to use. [More info](#)

OTI Annotation: This clone was engineered to express the complete ORF with an expression tag. Expression varies depending on the nature of the gene.

Components: The ORF clone is ion-exchange column purified and shipped in a 2D barcoded Matrix tube containing 10ug of transfection-ready, dried plasmid DNA (reconstitute with 100 ul of water).

Reconstitution Method:

1. Centrifuge at 5,000xg for 5min.
2. Carefully open the tube and add 100ul of sterile water to dissolve the DNA.
3. Close the tube and incubate for 10 minutes at room temperature.
4. Briefly vortex the tube and then do a quick spin (less than 5000xg) to concentrate the liquid at the bottom.
5. Store the suspended plasmid at -20°C. The DNA is stable for at least one year from date of shipping when stored at -20°C.

RefSeq: [NM_001081129.1](#), [NP_001074598.1](#)

RefSeq Size: 4868 bp

RefSeq ORF: 3864 bp

Locus ID: 238680

Cytogenetics: 13 B3