

## Product datasheet for **MG221395**

### **Dnaaf5 (NM\_001081265) Mouse Tagged ORF Clone**

#### **Product data:**

|                           |  |
|---------------------------|--|
| Product Type:             | Expression Plasmids                          |
| Product Name:             | Dnaaf5 (NM_001081265) Mouse Tagged ORF Clone |
| Tag:                      | TurboGFP                                     |
| Symbol:                   | Dnaaf5                                       |
| Synonyms:                 | BC053401; C76907; Heatr2                     |
| Mammalian Cell Selection: | Neomycin                                     |
| Vector:                   | pCMV6-AC-GFP (PS100010)                      |
| E. coli Selection:        | Ampicillin (100 ug/mL)                       |



[View online »](#)

**ORF Nucleotide Sequence:**

>MG221395 representing NM\_001081265  
 Red=Cloning site Blue=ORF Green=Tags(s)

TTTTGTAATACGACTCACTATAGGGCGGCCGGGAATTCGTCGACTGGATCCGGTACCGAGGAGATCTGCC  
 GCC**CGGATCGCC**

ATGGCGCGCCGCGGAGGCGGAGGTGGCCGCGGCCCGGGCTTAACCGAGGCGGCTGAAGCCGCGGAAC  
 TGACCCGCGCGCTAAGCCGCCTGCTACCGGGCTGGAGACGAAAAGTAAGCTGGGGCGCGCGCGCTCT  
 GGAGGCTCTGGAGCAGGTAAGAGAGCGGTGCGGCCCGCGCGGATTCCGCGGCCTCCAGGGCCCC  
 TGGGCCGCTGCTGCTGCCGCGCTGCTGCGGCTTCTAAGCGATCCGGCCGAGGGCTGCCGCGCGCTGG  
 CCGCTCACCTGCTCGACCTTGGCTGCGCCGCGCCGCGCGGCCCGCGACGCTCTGCCGCGTCTGCTGCC  
 GCGCTCAGCGCACGCTGGCCGACCTGAACTCGCGCGCCGCCCGGAGCCCTGCGAGGAGCTGCGT  
 CTGCGCCTCGTGCAGTCTCCACCTCGCCGTAGACCTGGGCGCGCCGCGCTCGCGCCCCACCTGGACG  
 ACGCCGTGCGCGCTTGGGGCCGCGCTGCTCGACCCCTTCGCTGCGGTGCGCCGGGAGGGCTGCGAGTG  
 CGCAGCCGCTCTGGCCGTGCCACTCCGGAGCACTTCCACATGCAATCGGAGTCTTGATAGGCCCCCTG  
 ATGCAGACCATCTCCACCAAGCACTGGAAGTCCGGGTAGCCGTTATCGAAGCCACGGGCACTGTGATCC  
 AGTTTGGCAGTGGAACTCGGTGGATGATGTCCTTTCCACTTTGCTCAAAGACTCTTCGATGACGTCCC  
 TCAGGTCGGCAGGCAGTGACCTCGGTGGTCGGGGATGGCTGCTGAATCTCCGGGACCGCTACTCCTTC  
 CTACACAAGCTCACCCCACTGCTGCTCAGCAGCTTCAAGTGAATGCCTGAGATCCGGCAGACAGCCA  
 CCAGCCTATGGGAGAAGTGGGCTGCAGTGGCAGCAGGAGAACGAGGCAGATCTAAAGGACAAGCTGGA  
 CTTGCTTACCTCCTCCTCCAACTACCTGAGCAGAGAGCCGCCCTGGCCTGGGTGCCGAGAGCTG  
 GTCTTCAAGAACCTCCTCAAGGTGCTTCTGCCATCTGTATGATATCACCGACTGGTGGTGGGACGC  
 GGGTGAAGGCAGCACAGCTGCTGCCGTGCTGCTGCACGCGAGAGACCACATCACCCAGGAGCTGGA  
 GATCGTCCTCAGAACCCTGCATCAGGCCTGCACCGATGAAGAGAAGGCTGTGGTCGGCAGTTGCATAAGA  
 GCCGAGAGCTCATTGGCACCTTGTACGCCAGAAATTTCTGAAACTGATCTTAGCCATGCTGAAGA  
 AAGCACCTCTGCCTCTGGCCTTGTATCCTCGCTTGTGTCATCCGGGGCTGCCCGGAAATGCCCTCCA  
 GCCACAGTACAGTATAGCCACAGAGCTGGCCAGGAGCACATCTGCCAGGGTCTGAGAATAATCTC  
 TACCTGGAGCATCTGCTGCTGTGTGTCAGGCCCTGCTGTCTGTATGTCAGGAAGACTGTCGAGTGCCA  
 GCCTGCAGTTCCTGGAGGTGCTGGTGAATAATGGCAGTCTCAGATGCCGTGGTCTTGAGAAGAAGGC  
 CCAGAAGACCATGGACACACTGGCTGAGGTGGAGGATATCCCAGCAGTCAAGACCTCTACCGCAAGCAT  
 GTGGGTGCACTCTGGAGCGCTGACAGCCTCGCATGGCGAGTGGCAGTGCACCTCTGTGCAAGTGTGTA  
 AGTTCAGTGTGCTCCTACCCAGGACGGCCGGCTGTGGGAGAAGCGCTGCAGCATGTGATCCCCACCT  
 CAGGGCCTGTCTCCAGCCCTCCACAGACCCACACATGCGCCTGAAGCTTCTCTATCCTGTCCATGATG  
 CTGCTGAGGCCTAAGGATACTGTGATTCTCAGGGACAGTTCCTGGCTATTTGGATATGTAATAAATG  
 ACATCCTAGCCCCAACCTGCAGTGGCATGCAGGGAGGACAGCTGCAGCCATCCGGACGGCTGCTATATC  
 CTGCTGTGGCACTCATCAGCAGTGCATCTTATCGGCCAAGCAGGTGCAAGAGGCACAAGAGACCCTG  
 ATGCCACAAGTGTGGCTACGCTGGAGGACGACTCCCAGACCACAGCCTGATGTCCTGCCGCATCATCA  
 ACATGTTCTCAAGAATTCAGGGGACACCATGGAGCCAGAGAAATTCCTCAAGGTCTATCCTGAGCTCTT  
 GAAGCGCCTAGATGATGCTCCAATGATGTGAGGATGGCAGCTGCTTCTGCCTTGTGCTCACCTGGCTCAAG  
 TGCATCGAGAGCTTGGATGGGAAGTCCGCCTATCAGAGCAGCGTTCAGTTCCTGTACCGGAGCTGCTGG  
 TCCACCTGGATGACCCAGAGAGTGCATTCAAGACACCGTCTAGAACTCCTCAAGGAGGCAGCGTCTCT  
 GTTCCAGATGTGCTGGTGGGAGACGGAGGCTGCTGTCACAAACACCGCTCAGCTACCTACTGCGAG  
 CAGCTGCTGCAGCACATGCAGACCATGGCCGCTGCTCGG

**ACGCGT**ACGCGGCCGCTCGAG - GFP Tag - GTTTAA

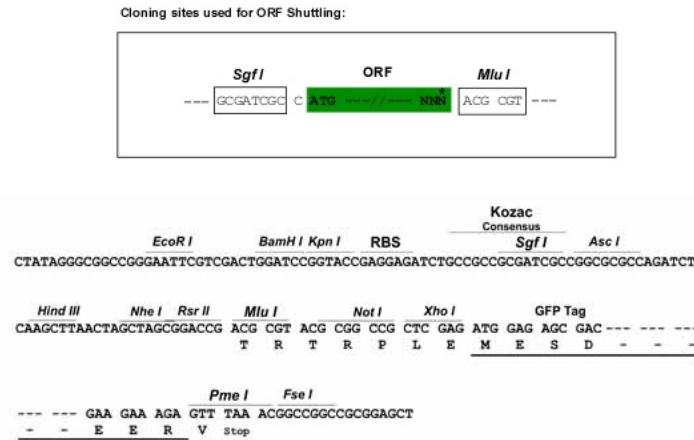
**Protein Sequence:** >MG221395 representing NM\_001081265  
Red=Cloning site Green=Tags(s)

MAAPAEAEVAAAPGLTEAAEAAELTRALSRLLPGLTESKLGRRRALEALEQVLEEAVRPGADSAAFQGP  
WARLLLPRLLRLLSDPAEGCRALAAHLLDLGLRRAARPRDALPRLLPALSARLARPELARPPPEPCEELR  
LALVQLLHLAVDLGGAALAPHLDDAVRALRAALLDPFAAVRREGCECAAALARATPEHFHMQSESLIGPL  
MQTISHQHWKVRVAVIEATGTVIQFGSGNSVDDVLSHFAQRLFDDVPQVRQAVTSVVGWLLNLRDRYSF  
LHKLTPLLLSSFSEMPEIRQTATSLWEKVGVLQWQENEADLKDKLDFASPPPPNYPEHESRPLGCREL  
VFRNLSKVLPAICHIDITDWWVGTRVKAQQLPVLLLHAEDHITQHLEIVLRTLHQACTDEEKAVVGCIR  
AAELIGTFVSPEVFLKLIAMLLKAPSASGLLILASVIRGCPRNALQPHVTVIATELAQEHCQGSNNL  
YLEHLLLVCVQALLSVCQEDCRAASLQFLEVLVTIMAVSDAVGLEKKAQKTMDTLAEVEDIPSSQDLYRKH  
VGALLERLTASHGEWAVHSVQLLKFTVLLTQAGPAVGEALQHVIPTLRAQLPSTDPHMRLKLF SILSMM  
LLRPKDTVDSQGFQRYLDMVINDILAPNLQWHAGRTAAAIRTAASCLWALISSDILSAKQVQEAQETL  
MPQVLATLEDDSQTTRLMSCRIINMFLKNSGDTMEPEKFLKVYPELLKRLDDVSNDRMAAASALLTWLK  
CIESLDGKSAYQSSVQFLYRELLVHLDDPESAIQDTVLEVLKEGSVLPDVLVRETEAVVHKHRSATYCE  
QLLQHMQTMAAAR

TRTRPLE - GFP Tag - V

**Restriction Sites:** Sgfl-MluI

Cloning Scheme:



ACCN: NM\_001081265

ORF Size: 2559 bp

OTI Disclaimer: The molecular sequence of this clone aligns with the gene accession number as a point of reference only. However, individual transcript sequences of the same gene can differ through naturally occurring variations (e.g. polymorphisms), each with its own valid existence. This clone is substantially in agreement with the reference, but a complete review of all prevailing variants is recommended prior to use. [More info](#)

OTI Annotation: This clone was engineered to express the complete ORF with an expression tag. Expression varies depending on the nature of the gene.

Components: The ORF clone is ion-exchange column purified and shipped in a 2D barcoded Matrix tube containing 10ug of transfection-ready, dried plasmid DNA (reconstitute with 100 ul of water).

**Reconstitution Method:**

1. Centrifuge at 5,000xg for 5min.
2. Carefully open the tube and add 100ul of sterile water to dissolve the DNA.
3. Close the tube and incubate for 10 minutes at room temperature.
4. Briefly vortex the tube and then do a quick spin (less than 5000xg) to concentrate the liquid at the bottom.
5. Store the suspended plasmid at -20°C. The DNA is stable for at least one year from date of shipping when stored at -20°C.

**RefSeq:** [NM\\_001081265.1](#), [NP\\_001074734.1](#)

**RefSeq Size:** 3445 bp

**RefSeq ORF:** 2562 bp

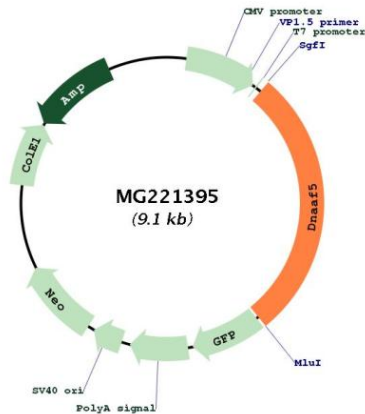
**Locus ID:** 433956

**UniProt ID:** [B9EJR8](#)

**Cytogenetics:** 5 G2

**Gene Summary:** Cytoplasmic protein involved in the delivery of the dynein machinery to the motile cilium. It is required for the assembly of the axonemal dynein inner and outer arms, two structures attached to the peripheral outer doublet A microtubule of the axoneme, that play a crucial role in cilium motility.[UniProtKB/Swiss-Prot Function]

**Product images:**



Circular map for MG221395