

Product datasheet for **MG221351**

Vmn1r187 (NM_001167568) Mouse Tagged ORF Clone

Product data:

Product Type:	Expression Plasmids
Product Name:	Vmn1r187 (NM_001167568) Mouse Tagged ORF Clone
Tag:	TurboGFP
Symbol:	Vmn1r187
Mammalian Cell Selection:	Neomycin
Vector:	pCMV6-AC-GFP (PS100010)
E. coli Selection:	Ampicillin (100 ug/mL)
ORF Nucleotide Sequence:	>MG221351 representing NM_001167568 Red=Cloning site Blue=ORF Green=Tags(s)

TTTTGTAATACGACTCACTATAGGGCGGCCGGAATTCGTCGACTGGATCCGGTACCGAGGAGATCTGCC
GCC**CGATCGCC**

ATGGAAATGTTGGCTCTTCAGATCCTTTTGCTTTGCCATGTTGTGGTTGGGACTGTGGCAACATCCTTC
TGTTTGTCCAACTTCTCTCAAATCTTGACTGACTCCAGACTGAGGCCAATACAGGTCATTCTAATCAA
CTTGGCTGTAGCCAATGCATTCATGCTCCTTCTTTGCATATTCATATGATCTTACTGATATTGTTCCC
AGGAAGCCTCCAACCTGACCTCAAATGAACTTGACATACTTTTCACCTGGTGGCTCGAGGCACAATCA
TGTGCTCCACCTGTGTCCTCAGTACATACCAGTTGTCACCTTTGTTCCCTGGTACCTGGGCTAGGGTCAT
GTTCAGCGAAATATCCCCAAGGTTGTAAGCTATTGTTGTTACAGCTGCTGGTTGTTCAAGTCTTAAAT
AATGCTTACATGCTAATGAATGTCAGTGGTCCACAGAAATCACACAATGACTCTGATTCTAAAGCAATT
CAATATGCTCCATCTCTGGGTCAGTGTAGACATGAATTTCTTGGGTTTTCCCATGACATCATATTCT
AAGCATCATGGCCTGGACCAGTGTCTCCATGGTGATTCACCTAACAGACACCACCAGAGAATGAACCAC
ATACATAAGGTCAATCAAAACAACAGAGGCCATGCTGAGACCAGAGCAGCCACACCATCCTGATGCTGG
TGGTCACATTTGTGAGCTCATATACTCTAAATTGATTAGTATTTCAATTCACATTTCTTTGTGGAATC
TTGTCTCTGGTTGAGGTATGTCACAAAACCTCTGGCTCTAAGCTTCCCCACCATTTCTCCCTTACTGTTG
ATATTTAGGGATTGTAAGGGTCATTGTTCTCTGCGCATCATGTCAGTATGGAAATCTATT

ACGCGTACGCGGCCGCTCGAG - GFP Tag - GTTTAA



[View online »](#)

Protein Sequence: >MG221351 representing NM_001167568
Red=Cloning site Green=Tags(s)

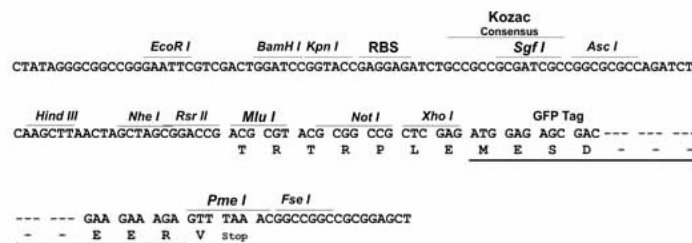
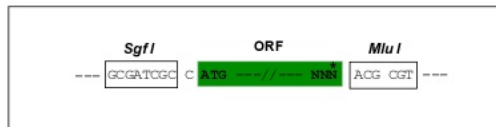
MEMLALQILLLLCHVVVGTVGNILLFVHNFSQILTDSRLRPIQVILINLAVANAFMLLLFAYSYDLTDIVP
 RKPPTDLKCKLAYFFHLVARGTMCSTCVLSTYQFVTLVPGTWARVMFSEISPKVVSYYCCYSCWLFVSLN
 NAYMLMNVSGPQKSHNDSDSKGNISCSISGVSDMNFRLRFSHDIIFLSIMAWTSVSMVIHLNRHHQRMNH
 IHKVNQNNRGHAETRAAHTILMLVVTFFVSSYTLNCSISIFHISFVESCLWLRVYTKLLALSFPPTISPLLL
 IFRDCKGHCSLRIMSVWKSII

TRTRPLE - GFP Tag - V

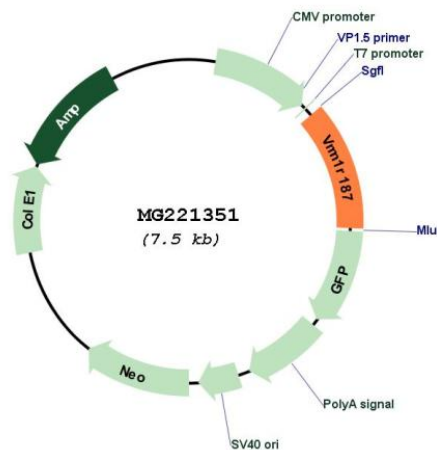
Restriction Sites: SgfI-MluI

Cloning Scheme:

Cloning sites used for ORF Shutting:



Plasmid Map:



ACCN: NM_001167568

ORF Size: 900 bp

OTI Disclaimer:	The molecular sequence of this clone aligns with the gene accession number as a point of reference only. However, individual transcript sequences of the same gene can differ through naturally occurring variations (e.g. polymorphisms), each with its own valid existence. This clone is substantially in agreement with the reference, but a complete review of all prevailing variants is recommended prior to use. More info
OTI Annotation:	This clone was engineered to express the complete ORF with an expression tag. Expression varies depending on the nature of the gene.
Components:	The ORF clone is ion-exchange column purified and shipped in a 2D barcoded Matrix tube containing 10ug of transfection-ready, dried plasmid DNA (reconstitute with 100 ul of water).
Reconstitution Method:	<ol style="list-style-type: none">1. Centrifuge at 5,000xg for 5min.2. Carefully open the tube and add 100ul of sterile water to dissolve the DNA.3. Close the tube and incubate for 10 minutes at room temperature.4. Briefly vortex the tube and then do a quick spin (less than 5000xg) to concentrate the liquid at the bottom.5. Store the suspended plasmid at -20°C. The DNA is stable for at least one year from date of shipping when stored at -20°C.
RefSeq:	NM_001167568.1 , NP_001161040.1
RefSeq Size:	903 bp
RefSeq ORF:	903 bp
Locus ID:	100039499
Cytogenetics:	7