

Product datasheet for **MG221339**

Cdh19 (NM_001081386) Mouse Tagged ORF Clone

Product data:

Product Type:	Expression Plasmids
Product Name:	Cdh19 (NM_001081386) Mouse Tagged ORF Clone
Tag:	TurboGFP
Symbol:	Cdh19
Mammalian Cell Selection:	Neomycin
Vector:	pCMV6-AC-GFP (PS100010)
E. coli Selection:	Ampicillin (100 ug/mL)



[View online »](#)

ORF Nucleotide Sequence:

>MG221339 representing NM_001081386
 Red=Cloning site Blue=ORF Green=Tags(s)

TTTTGTAATACGACTCACTATAGGGCGGCCGGGAATTCGTCGACTGGATCCGGTACCGAGGAGATCTGCC
 GCC**CGCATCGCC**

ATGAATTATTGCTTCTTGAACACTGGATATTGATGATTCCTCTTCTATGGCCTTGCCTTAAAGTTTCAG
 AGACCTTGAAAGCTGAGAAGGCTCGGAGAACAGTACCTTCCACTTGGAGAGCTAAGCGTGCCTGGGTGTG
 GAGACCATTTGTTGTTCTAGAAGAAATGGATGATATAAATGTGTTGAAAGCTAAGATCTGACTTAGAC
 AATGGAACAACCTTTCCAGTACAAGCTACTGGGATTGGCGCTGGAAGCTTTAGCATTAAATGAAAGAA
 CAGGTGAAATATGTGCCATACAGAAGCTTGATAGAGAGGAAAAATCCCTCTACATTCTGAGAGCCCAGGT
 AATAGACACCACTATTGGGAAGGCTGTGGAACCTGAATCCGAGTTTGTGCATCAGAGTTTTGGATATCAAT
 GACAATGAACCCAGATTCCTAGATGAACCATATGAGGCCATTGTACCTGAGATGTCTCCAGAAGGAACAT
 TTGTCATCAAGGTGACAGCCAATGACGCAGATGATCCTTCAACTGGCTATCATGCTCGCATCCTATACAA
 CTTAGAACGAGGTCAACCATACTTTTCTGTTGAGCCAACAACAGGAGTCATAAGGATATCTTCTAAGATG
 GATAGAGAGTTGCAAGATACATACTGTGTAATTATTCAAGCCAAGGACATGCTCGGTGAGCTGGAGCCT
 TGCTGGAACAACAACCGTATCAATTAAGCTGTGAGATTAATGACAACAAGCCAAATTTCAAAGAAAG
 TTTCTACCGCTTCACTATATCTGAATCTGCACCCATTGGAACATCAATAGGGAAAATTTAGGCATATGAT
 GATGACATAGGGGAGAATGCAGAGATGGAGTACAGCATTGAAGATGATGATTTCAAAAATATTTGACATAA
 TCATTGACAATGACACCCAAGAAGGGATAGTTATACTTAAAAAGAAAGTTGATTTTGAGCAGCAGAGCTA
 TTATGGCATTAGAGCTAAGGTTAAAACTGCCATGTGGATGAAGAGCTTGACCTGCCATGTTAACGCT
 TCCACAACCTACATTAAGTTCAAGTGAAGATGAAGATGAACCTCCTGTTTTCTTACCATATTACA
 TACTTGAATTCCTGAAGGAAAACCATATGGAACAATTGTGGGACGGTTCTGCCAGAGCCCAGATCG
 AAGACAATCTCCTATGAGATATTATCTCACTGGAAGCAAAATGTTTGATATCAATGACAATGGAACAATA
 ATCACCCTAACATGCTTGACAGAGAGGTGAGTCTGGTACAACCTTGACTGTGACAGCTACTGAAACAT
 ACAATGTACAACAGATCTCTTACGCCATGTTTATGTACAAGTCTTAAACATTAACGACAATGCTCCAGA
 GTTCTCTCAATCTATGAGACTTATGTTTGTGAAAATGCTGAATCTGGTGAAGATAGTTTACAGATCATCAGT
 GCAATTGATAGAGATGAGTCCATAGAAGATCACCATTTTTACTTTAATCACTCTCTGGAAGACACAAACA
 ACTCAAGTTTTATGCTAACAGACAATCAAGATAACACAGCTGTAATTCTGAGTAATAGAAGTGGTTTCAA
 TCTTAAAGAAGATCCTGTCTTCTACATGATCATCTTGATTGCTGATAACGGGATCCCATCTCTCACAAAGC
 ACAAACTCTCACTATCCAAGTCTGTGACTGTGGAGACAGTAGAAACACAGAACTTGTGCTAACAAAGG
 GACTTCTCTTATCATGGGATTCAGAACAGAGGCAATAATTGCCATCATGATATGTGTTATGGTAATATT
 TGGGTTTTTCTTTTGTCTTCTGCTCTGAAACAGCGAAGAAAGGAGACTCTATTTCCAGAGAAGACTGAA
 GACTTTAGGGAGAATATATTTTGTCTATGATGATGAAGGCGCGGGGAAGAAGACTCGGAAGCCTTTGACA
 TCGTAGAGCTGAGACAAAGTACAGTAATGAGAGAAAGAAAGCCTCAGAGAAGCAAGAGTGGCGGAGATCAG
 GAGCTTGTACAGGCAGTCCCTGCAGGTGGGCCAGACAGTGCATATTTGAAAATTTATCCTAGAGAAG
 CTTGAAGAAGCCAACACAGACCCATGTGCTCCCCCTTTGATTTCACTACAGACGTTTGCCTATGAGGGAA
 CAGGGTCAATCAGCTGGCTCTCTGAGTCTTGGCATCCAGAGACACTGATCAGGAGGATGACTTCGACTA
 CCTTAATGACCTGGGACCTCGTTTTAAAAGATTAGCAAGCATGTTTGGCTCTGCAGTACAACCAACAAT

ACGCGTACGCGGCCGCTCGAG - GFP Tag - GTTTAA

Protein Sequence: >MG221339 representing NM_001081386
 Red=Cloning site Green=Tags(s)

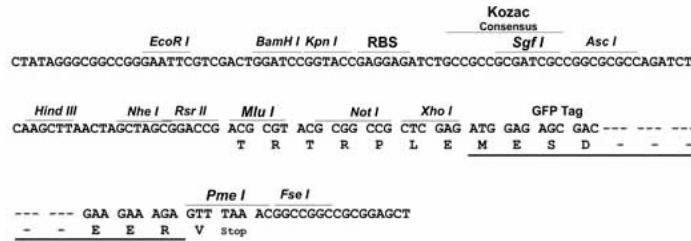
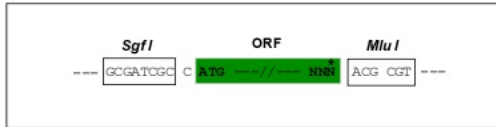
MNYCFLKHWILMIPLLPCLKVSETLKAEKARRTVPSTWRAKRAWVWRPFVVLEEMDDIQCVGKLRSDLD
 NGNNSFQYKLLGIGAGSFSINERTGEICAIQKLDREKSLYILRAQVIDTTIGKAVETESEFVIRVLDIN
 DNEPRFLDEPYEAIVPEMSPEGTFVIKVTANDADDPSTGYHARILYNLERGQPYFSVEPTTGIVIRISSKM
 DRELQDITYCVIIQAKDMLGQPGALSGTTTYSIKLSDINDNKPIFKESFYRFTISESAPIGTSIGKIMAYD
 DDIGENAEMEYSIEDDDSKIFDIIIDNDTQEGIVILKKKVDFEQQSYYGIRAKVKNCHVDEELAPAHVNA
 STTYIKVQVEDEPPVFLPPYYILEIPEGKPYGTIVGTVSATDPDRRQSPMRYLGTGSKMFDINDNGTI
 ITTNMLDREVSAYNLTVTATETYNVQIISAHVYVQVFNINDNAPEFSQFYETYVCENAESGEIVQIIS
 AIDRDESIEDHHFYFNHSLIEDTNSSFMLTDNQDNTAVILSNRTGFNLKEDPVFYMIILADNGIPSLTS
 TNTLTIQVCDGDSRNTETCANKGLLFIMGRTEAIIAIMICVMVIFGFFFLILALKQRRKETLFPEKTE
 DFRENIFYDDEGGGEEDSEAFDIVELRQSTVMRERKPKRKSAAEIRSLYRQSLQVGPDSAIRKFILEK
 LEEANTDPCAPPFDSLQTFAYEGTGSSAGSLSSLASRDTDQEDDFDYLNDLGRPFKRLASMFSAVQPNN

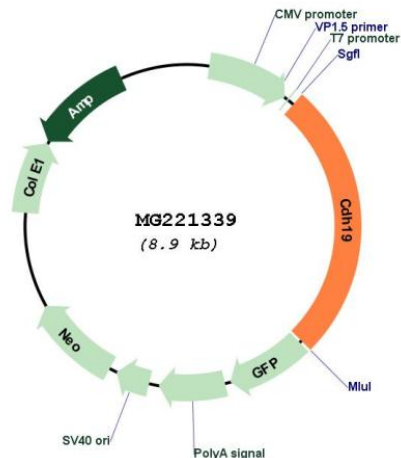
TRTRPLE - GFP Tag - V

Restriction Sites: SgfI-MluI

Cloning Scheme:

Cloning sites used for ORF Shutting:



Plasmid Map:


ACCN: NM_001081386

ORF Size: 2310 bp

OTI Disclaimer: The molecular sequence of this clone aligns with the gene accession number as a point of reference only. However, individual transcript sequences of the same gene can differ through naturally occurring variations (e.g. polymorphisms), each with its own valid existence. This clone is substantially in agreement with the reference, but a complete review of all prevailing variants is recommended prior to use. [More info](#)

OTI Annotation: This clone was engineered to express the complete ORF with an expression tag. Expression varies depending on the nature of the gene.

Components: The ORF clone is ion-exchange column purified and shipped in a 2D barcoded Matrix tube containing 10ug of transfection-ready, dried plasmid DNA (reconstitute with 100 ul of water).

Reconstitution Method:

1. Centrifuge at 5,000xg for 5min.
2. Carefully open the tube and add 100ul of sterile water to dissolve the DNA.
3. Close the tube and incubate for 10 minutes at room temperature.
4. Briefly vortex the tube and then do a quick spin (less than 5000xg) to concentrate the liquid at the bottom.
5. Store the suspended plasmid at -20°C. The DNA is stable for at least one year from date of shipping when stored at -20°C.

RefSeq: [NM_001081386.1](#), [NP_001074855.1](#)

RefSeq Size: 3054 bp

RefSeq ORF: 2313 bp

Locus ID: 227485

Cytogenetics: 1 E2.1