

Product datasheet for **MG221299**

Rif (NM_001081013) Mouse Tagged ORF Clone

Product data:

Product Type:	Expression Plasmids
Product Name:	Rif (NM_001081013) Mouse Tagged ORF Clone
Tag:	TurboGFP
Symbol:	Rif
Synonyms:	9230110M18Rik; A1195322; MommeD8
Mammalian Cell Selection:	Neomycin
Vector:	pCMV6-AC-GFP (PS100010)
E. coli Selection:	Ampicillin (100 ug/mL)
ORF Nucleotide Sequence:	>MG221299 representing NM_001081013 Red=Cloning site Blue=ORF Green=Tags(s)

TTTTGTAATACGACTCACTATAGGGCGGCCGGAATTCGTCGACTGGATCCGGTACCGAGGAGATCTGCC
GCC**CGATCGCC**

ATGTGGCACTTAATTTACTCTAACTTCATTACATACTTACATAGTTATTTGCATTGTAGGAGTTGTT
TTGAATTACTGCTTTCAGTGTCTGAAAGTGAAGTCCCTGTGAAGTCTGGGTACCATTCCCTCAGTCTCT
ACAGGAGTCACATGATGCATTGTTGGAATTTGAAATAATAATTTACAAATACTGGTTCATGTTACAAAA
GAAGGAGTGTGAAAAACCCATTCTTCTTAAAATTCGTGACAAACAGCCAGTAGAGACAGAGGAAGTTA
ACAAATTGATTGCACAAGAAGGACCTTCTTTCTACAAATGAGAATCAAGCATTTGTTGAAGTCTAACTG
CATCCCCAAGCTACTGCTTTATCAAACTGTGTGCAGAGTCTAAAGAAGTTCGCCAGGTGTCGTGTTTT
CAGCAAGCCTATATCACATGTTTATGTTCCATGCTTCCCAGCGAAGAGGCTATTACAGGAGATTGCAAAGG
TGGACTGCAAGGACGTGTAGACATCATATGTAATCTGGAATCTGAGGGTCAGGATAACACAGCATTGTT
TCTTTGTACAACCTACCTTACCCAGCAGCTCCAACCGCCAGTGTATATTGTTCTTGGGAGCTGACTCTC
TTTTGGAGTAACTGCAAAGAAGAAATGACCCATCTTTGGAGACATTTTGGAGCGTTGTGCGCAGTTTG
GTGTCATAGCTAAAACACAACAGCATTATTTTGCCTGATTAGAGTCATACAGACTGAAGCACAAGATGC
TGGCATTGGGGTATCAATTTTATTATGTGTGAGAGCTCTTCAACTCAGATCAAGTGAAGATGAGGAAATG
AAAGCTTCGGTCTGTAACAATTTCTGTCTTTTACCAGAAGATTTGGAAGTCAAGCAGAGCCTGTGTCAGC
TTACAGAATTCTTAATTGAACCCAGTTTGGATGGATTCAATATGCTGGAAGAAGTATTTGCAGCCAGA
TCAAAAATTTGATGAAGAAAACGCACCAGTTCCAAATTCCTGCGGTGTGAGCTTTTACTAGCTTTAAAA
GCCATTGGCCCTTTGATCCTGAATTTTGGGACTGAAAACTTTGAAGCGACTGCCACCAACTCCTGG
GACAAGAAGCCTCAGATTCGGATGATGACCTAAGTGGCTATGAAATGTCTATTAATGATACAGATGCTT
AGAGTCATTTCTCAGTACTATGATGATGGAAGAAGATAAGCAATATAGAAGAAGTCTAACAGATCAG
AATAAGGAGAAAAAGACAAAAAGCCATTGGTTCCTCTGAGAGATACCAGAGGTGGCTTCAGTATAAGT
TTTTCTGTTTGTGTGAAGCGGAATGCATAGAGGCCAGGATTCTCCATCATTCCAAGATGCACATGGA
AGATGGAATATACCTGTCCAGTTTGTATTAATAAATCAAGAGAAAAGAGCTATTTGTTCTCCTCAGCTA



[View online »](#)

ATGGAACATGTTAAAATGCCACCAAGCAGAAGCCACCGTTCTAGAAAAGAAATTA CTATTGAAAAGCGCTC
AAAGGGGTATTTATCCCAAGAGTCTACTGGAAGTCTGGAACAAAATCCAGAGCAAGCCAGGGGAGAGTC
TCATGAATATGTCACATTTAGCAAGTTAGAAGACCCGCCCTGCAAGACAGAGACTTGTACCCGTGTCCG
GGTACAGATTGTTCCCGTGTGTTCAAACAGTTTAAATATTTAAGCGTGCATCTTAAAGCTGAACACAAA
ATAATGACGAAAACGCCAAGCACTACTTGGATATGAAAAATAGGAGAGAGAAGTGTACTTATTGCCGGCG
GCATTTTCATGTCAGCTTTTCCCTCCGAGAACATGAGCAGGTGCATTGTGGTCTCAGCCTTACATGTGT
GTCTCTATAGATTGCTATGCAAGTGTGGGTGAGTGAATGAACTCCTTAACCACAAGCAGAAGCATGATG
ACCTCCGTTACAATGTGAGTTGAATGGCTGCAATATTGTGTTTCAGTGACTTGGGCCAGCTTACCACCA
TGAAGCACAACACTTCAGGGATGCATCCTACACATGCAATGTCCTTGGCTGTAAAAAGTTCTATTATTCT
AAAATTGAATACCAGAACCACCTCTCCATGCATAATGTTGAAAGTCCAGATGGAGAATTAAGAAATCAG
TGAAACTTGAGGAACCTGGAGCAGGTGGGAAGCAAGATTGTGTGGACCAGTCCCCTACTTGTGAAAC
TGAGAAGTCCCATTCTTGAAGATCACCATCTCTGTCCAGGGTCACTAGTGTCTATATAGACACCACA
GAGACCCTGAAGGACAACAGCGACAGCAATTCTAGTGATCAGTTAAGTCACAGCTTCCACGTCAATAA
CTGAGGAGTTAATTGACACCCTAGACCCTCTGAAACCATGCAGGACCTGTTACTGTCTCATGAGAAAGT
CTTTGTTCCCTCCAGTTTAAAAGACAAGTCTCAATGTGGCTGTTTGTGTTTGTGATGGAACAAATTCACC
TGTGGTTTTGACGGCTGTGGCTCCACCTACAAAACGCAAGAGGGATGCAGAAACATCTGCGGAAGGTGC
ATCCGTACCCTGCAAGCCAAGAAAAATAAAGCAAAAAGACCTCTTAACTGCCTGGATGACAAAACATAA
TGAAGTGCACAAGTTTGTATGCAGAACCTAAACCTAGCTCTGATACAAATAGTGACTCCCCAGATGAAGT
CCAGATCACAGTATCCACACAAAATGCAACGAGAACAATCAAGGTTATCCCTGAACCTTCCATTTGTG
CTTCTAAAAGGCCATGTACAGAGGATACAATGTTGGAACCTCTGTTACGTTTGAACATTTAAGCTTGAA
GAACTCAATAGCACATGGCTCTTCTCAGGGTCATTGCAAGGGTGCCCATCTAGTGGTGTAAAGTCTCTT
CAGTCAGTCCCCTCTTCCATTTCCAGCAGTTAATCTTCAGAAATCAGGATGAAAATATGCCAAGTCACTACC
TTGCACAGTTGGCGCAAAGCTTTCTTCTGTGAGCTTCAAGGATGCAAAATATGAGTTTGTGACCAGAGA
AGCTTTGTTAATGCATTATCTTAAAAAGCATAACTATTCAAAAGAGAAGGTCTTCAAGTTAACCATGTTT
CAGCACCGATATTCCTTCCGTTGTACATCTGCCAAAGTCAATTTACAAGAAAAACACATCTTAGGA
TTCATTATAAAAAACAAACATCAAATGGCAGTGACAGGGCAACTCACAGACTGTTAGACAGTAAAAATG
TGATCATGAAGGGCCATGCTCAGTAGACAGACTGAAAGGTGACTGCTCTACAGAACTTGGTCCCAACAGT
AATTCAGAGACCAGCAATGTCATTCTAAAAAGATGAATGCAGCTCAGAAACAGACTTGGAGTCTCTT
GTGAGGAAACAGAAAGTAAAGTCTCTGGTATCTCATCACCAATAGGTAGCCATAGAGAAGAGGGAGAGGA
GAAAGAGGGGAGAGGAAGTAGGGGACTGTTGCTAAAGGAAATCTGTGCTATATTTTGAATAAGTACCAC
AAACCATTCCATTGTATCCACAAAACCTGCAATCTTCTTCAATTTACCAATCTAAAAGGCCTGATTGCCATT
ACAGAACTGTGCATCAGTACAACAAAGAGCAGTTATGCTTAGAGAAGGACAAAGCAAGAACAAAAGGGA
GCTTGTAAAAATGTAAAAAGCTATTTGCTTGCAAAATATAAAGACTGTAACAAGCGCTTCTGTGCTCCAAG
GCCCTGGCTAAGCACTGTAGTACTCTCATAACCTAGACCACATTGAAGAGTCTAAAGTGCCTTTCTGAGA
CGGAGTCTGCAGCGAGGTTTTCTTGTAAACCAGCCTCAGTGCCCTGCTGTTTTTATTTCATTTCAGTAAAGT
GAAACACCACCTGTTGGAACAGCATAATATTGAAGGAGAAATCCATTCCGATTATGAGATCCATTGTACT
CTTAATGGCTGTGGCCAGATTTTTCAGCCATCGAAGTAATTAATTCAGCATGTCTACTACCGACATAAGG
ACTATTATGACAACCTGTTTCAGCAGCCAGAAAGTAGCAAAATGAGCGGCTTCTAAGGAGTAAAAGGTGTG
TCAGACAACCTCAGGCACAAGGACTGACGCAGAGCAGGGGCAGACACAGGGACAGACGCAAGGACAGGAA
CAGCAGGCTGCCAAAAGGCCATTTAATACTAAAGCTAAAAAATGTGGCTTACTCAAAGATAAAAAAGCTC
CAATTACCTTTAAAAACAAGAGCAGAAGCGATCCATATGTGTGTTGAGCATTCTGAGCACACACAGTACCC
GTGCATGGTTCAGGGATGCTTGTCTGTGGTGAAGCTGGAAGCAGCATTGTGAGACATTACAAAACGTACC
CACCAGATGAATAGTGCCTATTTAGAGCAGCAGTTGGAGAACCTTGTGGTTTGTGTTAAGTATGGTACCA
AAATTAAGAGCAGGCCCTTTCAGAAAGTAGAGCCCTGTGTAAGAAAGAGGAAAGTACTAGCTGTGAATC
GGTGCACACAGAGAATGGAGCCCAGGAGACAGCAGTGTGCCCTCCCAAACACTGATTCTACTTGCCCA
GCTGAACAAGATGTCGGTCAGAAAGGGTGTTCAGAAAGAAACCCAGTTTTTGACACACACAGTCTGCTCT
ACAGGGGAACTTTGAAATGCAACCATTCTCAGAAACCACTTCTTGGAACAGTGAATATAGCTCAGTC
TTCTCCCTGTAAAATAGAAAGCCCATACCTAATCCAGTGGGACAGAAAGTGGTACTTATTTACGGGAC
TTCCAGCTGCCATTACCAAGGATCAAAGAAGAACCTGGGCAGCATAGTTCAGGGCAAGAAAAACACTGTAA
AGAATGCAACCCAGTCCCAAAAGAGAATATTAGAAAGCATTCTCAGCCCAGGTCAATTTGATCTGAAGAC
TTACAAACCTATGGGATTTGAGTCTTCTTCTGAAATTTATTACGAAAGTGAAGAGAAGGATGATGAT
TTTGATGACTGGGAGCCTTCAGAGCACTTAACATTGAATAACTCTCTCACCCAGTAATGACTTGACAG

GGAATGTTGTGGCAGATACCATAGTGAATGAGAGTGCCCCCTCAAGTTGACATACCTCATTCTTCCAGTGA
 CCCTCCAGTTTCAGAGAACCTGACTGCACTGCCACCATTAGTAGTACTGAAGCAACAGCAGTTCCTTCC
 TTGGAAAACTGAGGGTTGTGCTGGACAAAGCATTAAACAGACTGTGGAGAACTTGCCCTAAAACAGCTTC
 ATTACCTCGGCCTGTGGTTGTCTTGAAGATCTAAGTTCTCTACCAATTTTAGACTTGTTCACAC
 TAAGAAGACAGATGAGCTTTGTGTAGGAAGTTCC

ACGCGTACGCGGCCGCTCGAG - GFP Tag - GTTTAA

Protein Sequence:

>MG221299 representing NM_001081013
 Red=Cloning site Green=Tags(s)

MWHLIYYSNFITYLHSHYLHCRSCFELLVSVSESELPCVWVFPFLQSLQESHADALLEFGNNNLQILVHVTK
 EGWKNPILLKILSQQPVEETEEVNKLIHQEGPSFLQMRKHLKSNICIPQATALSKLCAESKELAQVSCF
 QQAYITCLCSMLPSEEAIQEIQAKVDCKDVLDIICNLESEGQDNTAFVLCCTTYLTQQLQTASVYCSWELTL
 FWSKLQRRIDPSLETFLERCRQFVIAKTQQHLFCLIRVIQTEAQDAGIGVSILLCVRALQLRSSEDEEM
 KASVCKTISCLLPEDLEVRRACQLTEFLIEPSLDGFNMLEELYLQPDQKFDEENAPVNSLRCELLLALK
 AHWPFDPEFWDWTKLRHCHQLLQGEASDSDDDLSGYEMSINDTDVLESFSLSDYDDGKEDQYRRSLTDQ
 NKEKRDKKPIGSSERYQRWLQYKFFCLLCKRECIEARILHHSKMHMEDGIYTCPVCIKKFKRKELVPHV
 MEHVMPSPSRSHRSRKKLLKSAQRGIYPKSPGTSLQNPQARGESHEVYVTFSKLEDRRLQDRDLYPCP
 GTDCSRVFKQFKYL SVHLKAEHQNDENAKHYLDMKNRREKCTYCRRHFSAFHLREHEQVHCGPQPYMC
 VSIDCYARFGSVNELLNHHKQKHDDLRYKCELNVCNIVFSDLGQLYHHEAQHFRDASYTCNVLGCKKFYYS
 KIEYQNL SMHNVE SPDGELKKS VKLEEPGAGGKQDCVDQSHLLEDETEKSHSLEDHHLCPGSASAHIDTT
 ETLKDNDSNSSDQLSHSSSTSITTEELIDTLDHSETMQDLLLLSHEKVFPVSSLKDKCSNVAVCFDGTKFT
 CGFDGCGSTYKNARGMQKHLRKVHPYHCKPRKIKTKDLFNCLDDKHNEADKFAEPKPSDNTNSDSDPDEG
 PDHSIHTKCKREHQGYSPEPSICASKRPECTEDTMLELLRLKHLKSLKNSIAHGSFSGSLQGPCSSGAKSL
 QSVPSISDVNLQNDENMPSQYLAQLAAKPFCELCGCKYEFVTREALLMHYLLKHNYSKEKVLQLTMF
 QHRYSPFRCHICQRSFTRKTHLRIHYKNKHQIGSDRATHRLDSEKCDHEGPCSVDRLKGDCESTELGPNS
 NSETTQCHSKKDECSSETDLESSCEETESKISGISPIGSHREEGEEKEGRGSRRTVAKGNLCYILNKYH
 KPFHCIHKT CNSFTNLKGLIRHYRTVHQYNKEQLCLEKDKARTKRELVKCKKLFACKYKDCNKRFLCSK
 ALAKHCSDSHNLDHIEESKVLSETESAARFSCNQPCPAVFYFSKLLKHHLLLEQHNIIEGEIHSDYEIHCT
 LNGCGQIFSHRSNYFQHVYRHKDYDNLFSQKVANERLLRSEKVCQTQAQGLTQTQGTQGGTQGGQ
 QQAAKRPFNTKAKKCGLLKDKKAPITFKTRAEAIHMCVEHSEHTQYPCMVQGCLSVVKLESSIVRHYKRT
 HQMNSAYLEQQLENLVVVCYKGTIKDEPPSEVEPCVKKEESTSCESVHTENGAPGDSSVPLPNTDSTCP
 AEQDVGQKGC SERNPVFDTHSLLYRGTLCNHSSETTSLEQCNI AQSSPCKIESP IPNPSGTESGTYFTD
 FQLPLPRIKEEPGQHSSGQENTVKNATQVPKENIRKHSQPRFDLKYKPMGFESSFLKFIQESEEKDDDD
 FDDWEPSEHLTLNNSHPSNDL TGNVVADTIVNESAPQVDIPHSSDPPVSENLTAVPPLVVAEATAVPS
 LENLRVLDKAL TDCGELALKQLHYLRPVVVLERSKFSFTPILDLPFTKKTDEL CVGSS

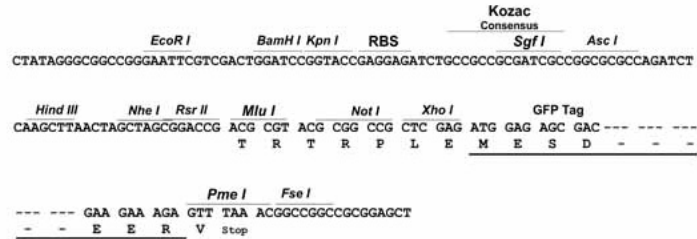
TRTRPLE - GFP Tag - V

Restriction Sites:

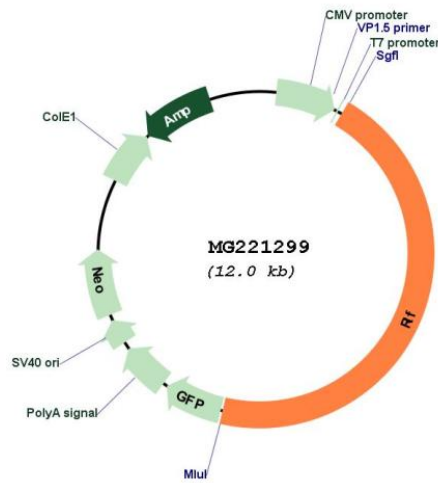
Sgfl-MluI

Cloning Scheme:

Cloning sites used for ORF Shutting:



Plasmid Map:



ACCN:

NM_001081013

ORF Size:	5424 bp
OTI Disclaimer:	The molecular sequence of this clone aligns with the gene accession number as a point of reference only. However, individual transcript sequences of the same gene can differ through naturally occurring variations (e.g. polymorphisms), each with its own valid existence. This clone is substantially in agreement with the reference, but a complete review of all prevailing variants is recommended prior to use. More info
OTI Annotation:	This clone was engineered to express the complete ORF with an expression tag. Expression varies depending on the nature of the gene.
Components:	The ORF clone is ion-exchange column purified and shipped in a 2D barcoded Matrix tube containing 10ug of transfection-ready, dried plasmid DNA (reconstitute with 100 ul of water).
Reconstitution Method:	<ol style="list-style-type: none">1. Centrifuge at 5,000xg for 5min.2. Carefully open the tube and add 100ul of sterile water to dissolve the DNA.3. Close the tube and incubate for 10 minutes at room temperature.4. Briefly vortex the tube and then do a quick spin (less than 5000xg) to concentrate the liquid at the bottom.5. Store the suspended plasmid at -20°C. The DNA is stable for at least one year from date of shipping when stored at -20°C.
RefSeq:	NM_001081013.1 , NP_001074482.1
RefSeq Size:	6585 bp
RefSeq ORF:	5427 bp
Locus ID:	109263
Cytogenetics:	4 D2.2