

## Product datasheet for **MG221295**

### Myh13 (NM\_001081250) Mouse Tagged ORF Clone

#### Product data:

**Product Type:** Expression Plasmids  
**Product Name:** Myh13 (NM\_001081250) Mouse Tagged ORF Clone  
**Tag:** TurboGFP  
**Symbol:** Myh13  
**Synonyms:** MyHC-eo  
**Mammalian Cell Selection:** Neomycin  
**Vector:** pCMV6-AC-GFP (PS100010)  
**E. coli Selection:** Ampicillin (100 ug/mL)  
**ORF Nucleotide Sequence:** >MG221295 representing NM\_001081250  
Red=Cloning site Blue=ORF Green=Tags(s)

TTTTGTAATACGACTCACTATAGGGCGGCCGGAATTCGTCGACTGGATCCGGTACCGAGGAGATCTGCC  
GCC**CGATCGCC**

ATGAGTTCAGACGCAGAGATGGCCATATTTGGAGAAGCCGCTCCCTACCTCCGAAAACCAGAGAAGGAGA  
GGATCGAGGCTCAGAACCGCCCATTCGACTCGAAGAAAGCCTGCTTTGCTGTGGATGATAAAGAAATGTA  
CGTGAAAGGCATGATCCAAAGCAGGGAAAATGACAAAGTCATTGTCAAGACCCTAGACGACCGGGAGCTC  
ACTCTGAACAGTGACCAAGTCTTCCCATGAACCCCTAAGTTTGACAAGATCGAGGACATGGCCATGA  
TGACCCACCTGCACGAGCCCGTGTGCTGTACAATCTCAAAGAGCGTTATGCAGCCTGGATGATCTATAC  
CTACTCAGGCCTTTCTGTGTCACCGTCAACCCCTACAAGTGGCTGCCGGTGTACAACCCCTGAGGTGGT  
GCGGCCTACCGAGGCAAAAAGCGCCAGGAGGCCACCCACATCTTCTCCATCTCTGACATGCCTACC  
AGTTTCATGCTAACAGATCGAGATAACCAATCCATCTTGATCACTGGAGAACTCTGGGGCTGGAAAAGACAGT  
GAACACGAAGCGTGTCACTCAACTTTGCAACAATTGCAGTCACCGGGGACAAGAAGAAAGAGCAGCAG  
CCGGGCAAAATGCAGGGAACGCTGGAGGATCAGATCATCAAGCCAACCCCTGCTGGAGGCCTTTGGAA  
ACGCCAAGACCGTGAGGAACGACAACCTCCTCCAGATTTGGGAAGTTCATTTCGGATCCACTTTGGAGCCAC  
AGGGAAGCTAGCATCAGCGGACATCGAAACCTATCTCTGGAAAAATCCAGAGTGACATTCAGTTATCC  
AGTGAAGAAGCTATCACATTTTTATCAAATCATGTCAAATAGAAGCCAGAATAATTGACTTGCCTTC  
TGATTTCAACCAACCCCTTCGACTTCCCTTTTCGTGAGCCAAGGAGAGGTCACAGTAGCTAGCATCGATGA  
CAGCGAGGAATTGTTGGCCACTGATAATGCCATTGACATCCTGGGCTTTAGCCCGGAGGAGAAAAGTTGGG  
ATCTACAAGCTGACAGGGGCTGTGATGCATTATGGGAACATGAAGTTCAAACAGAAGCAGAGAGAGGAGC  
AGGCTGAGCCAGATGGCACGGAAGTGGCTGACAAAGCTGGATACCTGATGGGACTGAATTCTGCAGAGAT  
GCTGAAAGGCCTGTGCTGTCCAAGAGTGAAGTTGGAAATGAGTATGTCACCAAAGGACAGAATGTCCAG  
CAGGTGACCAACTCAGTGGTGCCTGGCCAAGGCTGTCTATGAGAAGATGTTCCATGGATGGTCAACC  
GCATCAACAGCAGCTGGACACCAAGCAGCCCCGGCAGTACTTCATCGGGTCTTGGACATCGCTGGCTT  
TGAGATCTTTGATTTCAACAGCCTGGAGCAGCTGTGCATCAACTCACCATGAGAACTGCAACAGTTT



[View online »](#)

TTCAACCACCACATGTTCTGCTGGAGCAGGAGGAGTACAAGAAGGAAGGCATCGAGTGGGAGTTTCATTG  
 ACTTCGGGATGGACCTGGCGGCCTGCATCGAGCTCATTGAGAAGCCAATGGGCATCTTCTCCATCCTGGA  
 AGAGGAGTGCATGTTCCCTAAGGCCACAGACACCTCCTTCAAGAACAAGTTGTATGACCAGCACCTGGGA  
 AAGTCCAACAACCTCCAGAAGCCTAAACCACCAAGGCCAAGGCCGAAGCCCCTTCTCCCTGGTGCCT  
 ATGCGGGCACTGTGGATTACAACATCGCTGGCTGGCTGGATAAGAACAAGGACCCACTGAATGAGACCGT  
 GGTGGGGCTGTACCAGAAGTCTCCCTGAAGTTGTTGTCTTCTCTTTTCCAACACGCAGGAGCAGAA  
 GCAGGTGACTCCGAGGCAAGAAGGGAGAAAGAAGGAGGCTCCTCCTTCCAGACTGTCTGCTGT  
 TGTTCAGGAAAACCTTAACAAAATTGATGACCAACCTAAGGAGCACCCATCCTCACTTTGTGCGATGCCT  
 GATTTCCAATGAGACCAAGACTCCTGGTGTGATGGACCACTACTTGGTCATGCATCAGCTGCGCTGTAAT  
 GGGTCTCGAGGGCATCCGGATCTGCAGGAAAGGGTTCCCCAGTCAATCCTCTATGCTGACTTCAAAC  
 AACGGTACCGGATCCTTAACGCCAGTGCCATCCCGAAGGGCAGTTTCATCGACAGCAAGAACGCCTCGGA  
 GAAGCTCCTGAACCTCATCGATGTGACCGAGAGCAGTTCGGATTCGGCCATACCAAGGTGTTTTTCAA  
 GCTGGGCTCCTGGGGCTTCTGGAAGAGATGAGAGACGAGAAGCTGGTACCCTAATGACACGCACACAGG  
 CAGTGTGACGGGCTACCTGATGAGGGTGGAGTCAAGAAAATGATGGAGAGGAGGGAGTCCATCTTCTG  
 CATCCAGTACAATGTTCTGTTCCCTCATGAACGTCAAGCACTGGCCCTGGATGAACCTGTTCTTCAAGATC  
 AAGCCCCTGCTGAAGAGCGCGGAGGGCGGAGAAGGAGATGGCCACCATGAAGGAGGACTTCGAACGAGCCA  
 AGGAAGACCTGGCTAGATCTGAGGCTCGTCGGAAGGAGCTGGAGGAGAAAATGGTCTCCCTGCTGCAGGA  
 GAAAAATGACCTTCAAGTTCAGTCTGAACTCGAAGCAGAGAATCTAATGGATGCGGAGGAACGATGCGAG  
 GGTCTCATCAAAAGCAAGATCCAACCTGGAGGCAAAAGGTCAAGGAACTGAAATGAGAGGCTGGAGGAGGAGG  
 AAGAGATGAATTTGAGCTGGTTGCCAAGAAGAGGAATCTGGAAGACAAGTGTCTTCTCTCAAAAGAGA  
 CATTGACGACCTGGAGTTGACCTGACTAAGGTGAGAGAAGGAAAAGCACGCCACGGAGAACAAGGTGAAG  
 AACCTCTCTGAAGAAATGACAGCGCTTGAGGAAACCATTTCCAACCTGACGAAAGAAAAGAAGTCTCTGC  
 AGGAAGCCCATCAGCAGACCCCTGGATGACCTGCAGGTTGAAGAAGATAAAGTCAACGGTTCATCAAAAT  
 CAATGTCAAGCTGGAACAGCAGACGGATGACCTCGAGGGCAGCTTGGAGCAGGAGAAGAAAATGCGGGCT  
 GACCTGGAGAGAGTGAAGAGGAAGCTGGAAGGAGACTTGAAGATGTCCCAGGAATCCATCATGGATCTAG  
 AGAATGACACGCAACAGTTGGAGGAGAACTGAAGAAGAAGGAGTTTGAATGAGTCAGTTACAAACCAG  
 AATCGATGATGAGCAAGTCTCAGTCTACAGCTGCAGAAGAAGATCAAAGAATTACAGGCCCGCACAGAA  
 GAGCTAGAGGAAGAAATGAAGCAGAGCACACAGTCAAGCCAAAATGAGAAGCAGCGCTCAGACCTAG  
 CCAGGGAACTGGAGGAGATCAGCGAGAGGCTGGAAGAAGCCAGTGGGGCTACTTCAGCCCAGATCGAGAT  
 GAACAAGAAGAGAGAATCCGAGTTCAGAAACTCGAAGGGACCTGGAGGAGGCCACACTGCAGCAGCAA  
 GCCACAGCAGCCACCCTGAGGAAGAAGCACGCGGACACCTGGCGGAGCTCGGGGAGCAGATCGACAACC  
 TGCAGAGGGTGAAGCAGAAAGCTGGAGAAGGAGAAGAGCGAGCTGAAGATGGAGATCGATGACATGGCCAG  
 CAACATTGAAACAGTCTCCAAGTCAAAGAGTAACATGGAAGAATGTGCCGGTCTGTGGAAGACCAATTT  
 AACGAAATCAAAGCCAAGGATGACCAACAGACCCAGTTAATCCACGATCTGAACATGCAGAAGGCAAGGC  
 TGCAGACCCAGAAATGGCGAGCTGAGCCACCAAGTCAAGAGAAGGAGTCTCTGGTTTTACAGCTCACCAA  
 AAGCAAGCAGGCCCTCACCCAGCAGCTGGAGGAGCTTAAGAGGGCAACTGGAGGAAGAAAACCAAGGCCAAG  
 AACGCGCTGGCCACGCCCTGCAGTCTCCCGCCATGACTGTGACCTGCTGCGGGAACAGTATGAGGAGG  
 AGCAGGAAGGCAAAGCCGAGCTGCAGAGGGCACTGTCCAAGGCCAACAGCGAGGTGGCCAGTGGAGGAC  
 AAAATATGAGACGGATGCCATCCAGCGCACAGAGGAGCTGGAGGAGGCCAAGAAAAGTGGCTCAGAGG  
 CTCCAGGAGGCAGAGGAAAACACCGAGGCATCCAACCTCAAGTGTGCCTCCTGGAGAAAACCAAGCAGA  
 GGCTTCAGGGAGAAGTGATGACCTGATGCTGGACTTGGAGAGGGCCAACACAGCCTGCGCCACCCTGGA  
 CAAGAAAACAAAGAAACTTCGACAAGTCTTGCAGAGTGGAAAACAAAACCTGGATGAGAGCCAAGCTGAG  
 CTGGAAGCTGCCAGAAAGAGTCCAGGTCTCTCAGTACTGAAATCTTCAAGATGAGGAAATGCCTATGAGG  
 AGGTGGTGGATCAGTTAGAGACTGAGACGGGAGAATAAAAACCTGCAAGAGGAGATTTCTGACTTAAC  
 AGAGCAGATTGCAGAAACGGGCAAAAACCTCCAGGAAGTGGAAAAGACAAAGAAGCAAGTGGAGCAGGAG  
 AAATCTGACCTCCAGGCTGCCTTGAAGAGGTGGAGGGTTCCTTGAACACGAGGAGAGCAAGATCTTGC  
 GAGTCCAGCTAGAGTTAAGCCAGGTAATACTGAGCTTGTGCAAGGTCACAGAAAAGGATGAGGAAAT  
 CGAACAAATAAAAAGAAACAGCCAGCGTGTGGAGGCCATGCAAGTGTGTTAGATGCAGAAATCCGA  
 AGCCGCAATGACGCCCTGAGACTGAAGAAGAAGATGGAGGGTGTCTCAACGAGATGGAGATTACGCTGA  
 GCCATGCCAACCGCCAGGTGGCAGAGACCCAGAAAACACTTGCACAGGTCGAAGGCCAGCTTAAGGATTC  
 CCAGCTGCACCTGGACGATGCCAGAGAAGTAACGAGGACCTCAAGGAGCAGCTAGCCATTTGTGGAGCGC  
 AGGAATGGCTCCTGCAGGAGGAGCTGGAGGAAATGAAGGTGGCCCTGGAGCAGACAGAGCGGACCCGCA

GGCTGTCAGAGCAGGAGCTGCTGGACTCCAGTGACCGTGTCCAGCTGCTCCATTCCCAGAACACGAGCCT  
 GATAAATACCAAGAAAAAAGTAGAGGCCGACTTGGCTCAATGCCAGGCAGAAGTGGAGAAGCTCCATCCAG  
 GAGTCCAGAAACGCAGAAGAGAAGGCCAAGAAGGCCATCACTGACGCCGCCATGATGGCGGAGGAGCTGA  
 AGAAGGAGCAGGACACCAGCGCCACCTGGAGAGGATGAAGAAGAACCTGGAGCAGACGGTGAAGGACCT  
 GCAGCACCGTCTGGATGAGGCTGAGCAGCTGGCGCTGAAGGGCGCAAGAAGCAGATCCAGAACTGGAG  
 GCCAGGGTGCAGGAGTTGAAAGCGAGCTGGATGCTGAGCAGAAGAGAGGAGCTGAAGCTCTGAAGGGAG  
 CCCACAAATATGAGCGCAAAGTTAAAGAGATGACTTACCAGGCCGAGGAGGCCGCAAGAACATCTCCG  
 GCTCCAGGACCTGGTGGACAAGCTGCAGGCCAAAGTGAAGTCTACAAGAGGCAGGCAGAGGAGGCTGAG  
 GAGCAAGCCAACACAGCTATCCAGGTGCCGGAGGGTCCAGCACGAGCTAGAGGAGGCTGAGGAGAGGG  
 CAGACATCGCTGAGTCTCAAGTCAACAAGCTAAGGGCCAAGAGCCGTGATGTGGGAGGCCAGAAGATGGA  
 AGAA

ACGCGTACGCGGCCGCTCGAG – GFP Tag – GTTTAA

**Protein Sequence:**

>MG221295 representing NM\_001081250  
 Red=Cloning site Green=Tags(s)

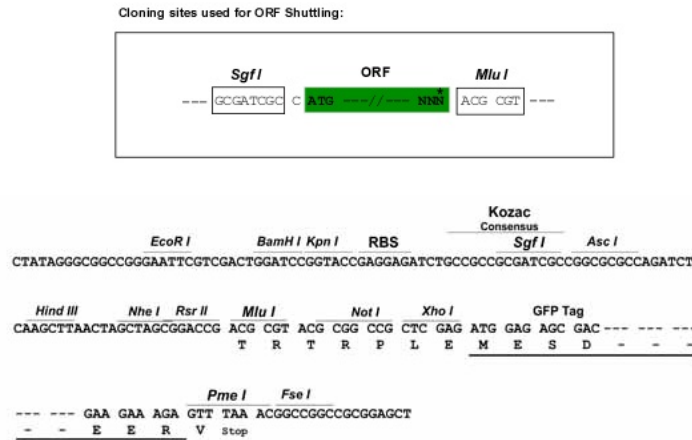
MSSDAEMAIIFGEAAPYLKPEKERIEAQNRPFDSKACFVDDKEMYVKGMIQSRENDKVIKTLDDREL  
 TLNSDQVFPMPNPKFDKIEDMAMMTHLHEPAVL YNLKERYAAWMIYYSGLFCVTVNPYKWL PVYNPEVV  
 AAYRGGKRQEAAPHIFSI SDNAYQFML TDRDNQSILITGESGAGKTVNTRKVIQYFATI AVTGDKKKEQQ  
 PGKMQGTLEDQIIQANPLLEAFGNAKTVRNDSSRFQKIRIHFATGKLASADIETYLLEKSRVTFQLS  
 SERSYHIFYQIMSNKKPELIDLLISTNPFDFPFVSQGEVTVASIDSEELLATDNAIDILGF SPEEKVG  
 IYKLTGAVMHYGNMFKQKQREEQAEPDTEVADKAGYLMGLNSAEMKGLCCPRVKVGNVYVTKGQNVQ  
 QVTNSVGLAKAVYEKMFWMVTRINQQLDTKQPRQYF IGVLDIAGFEIFDFNSLEQLCINFTNEKLQF  
 FNHHMFVLEQEEYKKEGIEWEFIDFGMDLAACIELIEKPMGIFSILEECCMPKATDTSFKNLYDQHLG  
 KSNNFQPKPKTKGAEAHFSLVHYAGTVDYNIAGWLDKNKDPNETVVGLYQKSSLLSFLFSNYAGAE  
 AGDSAGGKKGKGGSSQFVSAVFRENLNKMLTNLRSTHHPFVRCLIPNETKTPGVMDHYL VMHQLRCN  
 GVLEGIIRICRKGFP SRILYADFKQRYRILNASAIPEGQFIDSKNASEKLLNSIDVDREQFRFGHTKVFVK  
 AGLLGLLEEMRDEKLVLMTRTQAVCRGYLMRVEFKMMERRESIFCIQYNVRSFMNVKHWPMNLFKI  
 KPLLKSAEAEKEMATMKEDFERAKEDLARSEARRKELEEKMVSLLEKNDLQLQVQSEENLMDAEEERCE  
 GLIKSKIQL EAKVKELNERLEEEEMNSELVAKKRNLEDKCSSLKRDIIDLELTLTKVEKEKHATENKVK  
 NLSEEMTALEETISKLTKEKSLQEAHQTLDDLQVEEDKVNGLIKINVKLEQQTDDLEGSLEQEKKLRA  
 DLERVKRKLEGLKMSQESIMDLENDTQQLEEKLKKKEFEMSQ LQTRIDDEQVLSLQLQKKIKELQARTE  
 EEEEEIEAEHTVRAKIEKQRSDLARELEEISERLEEASGATSAQIEMNKKRESEFQKLRRDLEEATLQHE  
 ATAATLRKKHADTVAELEGEIDNLQRVKQKLEKEKSELKMEIDDMASNIETVSKSKNMERMCRSVEDQF  
 NEIKAKDDQQTQLIHDLNMQKARLQTQNGELSHQVEEKESLSVQLTKSKQAL TQLEELKRQLEETKAK  
 NALAHALQSSRHDCDLLREQYEEEQEGKAE LQRALSKANSEVAQWRTKYETDAIQRTTEELEAKKLAQR  
 LQEAENTEASNSKSCASLEKTKQRLQGEVDDLMLDLERANTACATLDDKQRNFDKVLAEWKQKLD ESQAE  
 LEAAQKESRSLSTEIFKMRNAYEEVVDQLETLRRENKNLQEEISDLTEQIAETGKNLQEVETKKQVEQE  
 KSDLQAAL EEEVEGSL EHEESKILRVQLELSQVKSELDRKYTEKDEEIEQIKRNSQRAVEAMQSVLDAEIR  
 SRNDALRLKKKMEGDLNEMEIQLSHANRQVAETQKHLRTVQGQLKDSQLHLDDAQRSNEDLKEQLAIVER  
 RNgLLQEEL EEMKVALEQTERTRRLSEQELLDSSDRVQLLHSONTSLINTKKKLEADLAQCQAEVENS IQ  
 ESRNAEEKAKKAITDAAMAEELKKEQD TSAHLERMKNLEQTVKDLQHRIDEAEQLALGGKKQIQKLE  
 ARVRELESELDAEQKRGAEALKGAKHYERKVKEMTYQAEEDRKNILRLQDLVDKLQAKVKS YKRQAEAE  
 EQANTQLSRCRRVQHELEEAERADIAESQVNKLRKSRDVGGMEE

TRTRPLE – GFP Tag – V

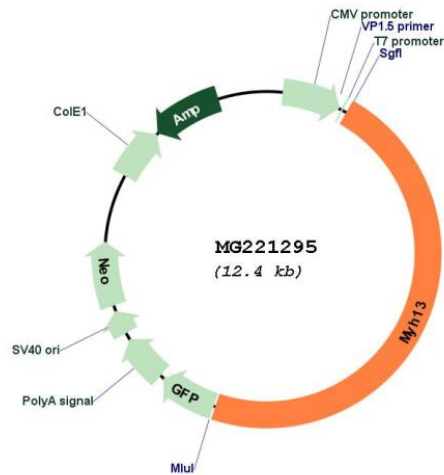
**Restriction Sites:**

Sgfl-MluI

Cloning Scheme:



Plasmid Map:



ACCN:

NM\_001081250

ORF Size:

5814 bp

OTI Disclaimer:

The molecular sequence of this clone aligns with the gene accession number as a point of reference only. However, individual transcript sequences of the same gene can differ through naturally occurring variations (e.g. polymorphisms), each with its own valid existence. This clone is substantially in agreement with the reference, but a complete review of all prevailing variants is recommended prior to use. [More info](#)

<b>OTI Annotation:</b>	This clone was engineered to express the complete ORF with an expression tag. Expression varies depending on the nature of the gene.
<b>Components:</b>	The ORF clone is ion-exchange column purified and shipped in a 2D barcoded Matrix tube containing 10ug of transfection-ready, dried plasmid DNA (reconstitute with 100 ul of water).
<b>Reconstitution Method:</b>	<ol style="list-style-type: none"><li>1. Centrifuge at 5,000xg for 5min.</li><li>2. Carefully open the tube and add 100ul of sterile water to dissolve the DNA.</li><li>3. Close the tube and incubate for 10 minutes at room temperature.</li><li>4. Briefly vortex the tube and then do a quick spin (less than 5000xg) to concentrate the liquid at the bottom.</li><li>5. Store the suspended plasmid at -20°C. The DNA is stable for at least one year from date of shipping when stored at -20°C.</li></ol>
<b>RefSeq:</b>	<u><a href="#">NM_001081250.2</a></u>
<b>RefSeq Size:</b>	5817 bp
<b>RefSeq ORF:</b>	5817 bp
<b>Locus ID:</b>	544791
<b>Cytogenetics:</b>	11 40.85 cM