

Product datasheet for **MG221274**

Btnl9 (NM_172793) Mouse Tagged ORF Clone

Product data:

Product Type:	Expression Plasmids
Product Name:	Btnl9 (NM_172793) Mouse Tagged ORF Clone
Tag:	TurboGFP
Symbol:	Btnl9
Synonyms:	B430208I01; Btn3; D330012D11Rik
Mammalian Cell Selection:	Neomycin
Vector:	pCMV6-AC-GFP (PS100010)
E. coli Selection:	Ampicillin (100 ug/mL)



[View online »](#)

ORF Nucleotide Sequence:

>MG221274 representing NM_172793
 Red=Cloning site Blue=ORF Green=Tags(s)

TTTTGTAATACGACTCACTATAGGGCGGCCGGAATTCGTCGACTGGATCCGGTACCGAGGAGATCTGCC
 GCC**GCGATCGCC**

ATGGCAGATTTCTCAGTATTTCTGGGGTTCTGAAGCAAATACCTCGGTGCCTCAGCATCTTCTTACCT
 ACCTTCTCTTCTCAGTTGTGGGAGGTGAACCTCAGACAAGGTCTGGGTGCTGGGCCTGAGGAGTCCAT
 TTTGGCCCGCTCGGGAAGCGGTGGAGTTCCCATGTCGCTTATCATCATACCAAGACGCAGAGCACATG
 GAAATTCGCTGGTTTCGGGCCAGGTCTCCAACGTGGTGTACCTGTACCAGGAGCCGAGGGGCGCTCCA
 GCCTGCAGATGGCACAGTTCGAAACAGGACCTTATTTGAAGCCTATGACATTGCAGAGGGAAGCGTGAA
 CCTACACATCCTAACCTGCTTCCCTCCGACGAGGGCCGATATGGGTGCCGCTTTCTTTCTCACAACCTC
 TCTGGTGAAGCCAGTGGGAGCTGGAAGTAGCAGGATCGGGCTCAGACCCACACATCTCCCTCCAGGGCT
 TCAGTGGAGAAGGTATTCAGCTGCAGTGCAGTTCAGTGGCTGGTACCCCAAGCCAAAGGTTTCAGTGGAG
 AGGCCACCAGGGTCAGTGCCTTTCTCCAGAGTCTGAAGCCATCACCCAGAATGCCCAAGGCTGTTTCAGT
 CTGGAGACATCCGTGATTGTCCGAGGAGGGGCCATAGCAATGTGTCTTGTATAATCCAGAACCCTTGC
 TGCCCCAGAAGAAAGAATTCGTGATCCAGATCGCAGATGTGTTCTACCCAGAATGTCCCCCTGGAGAA
 AGCGTTTGTGGGAACCCTGGTGGTCTGCCGCTCAGTCTGACTGTGCTTACCATGCTGGCCTGCGATAT
 TTTTACAAGCTGCGGAGCTTCCAAGAAAAACGGGTGAAGCAGGGAGAGGAGTCCGAGAGAACTTCAGA
 CAGAGCTTGACTGGAGAAGGTCTGAAGGCCAGGCTGAGTGGAGAGCAGCCAGCAATATGCAGCGGATGT
 GACCTTGGATCCTGCCACAGCGCACCTAGCCTGGAGGTCTCAACAACGGCAAGACCGTGTCTCCCGC
 CTGGGGGTGCCAGTATTGCAGCTGGGACCCGAGCGGTTCTCGGAGCAGACCTGCCTGCTGAGCCGGG
 AGCGCTTCTCCAGCGGCCCACTACTGGGAGGTGCACGTGGGCCGCGCAGCCGCTGTTCTCTGGCGC
 CTGTCTGGAGTCGGTGGAGCGCTCCGGGCCCGCGCCTGAGCCCGCGGCTGGCTACTGGGTGATGGGG
 CTGTGGAACCGCTGCGAGTACTTCGTGCTGGACCCGCATCGCGTGGCACTGGCGCTACGCGTGCCTCCCC
 GGAGGATAGCGCTCCTGTTGGACTACGAGGCCGGGAAGCTGTCTTTCTTCAACGTGTCTGATGGCTCGCA
 CATCTTCAGCTTACCAGACTTTCTCAGGGCGCTCCGCGCCTACTTAAGGCCCGAGCTCACGACGGC
 AGTGAACATCCGGATCCTATGACCATCTGCTCTTTGCCGTTAGAGGGCCACAGGTCCTCGAAGAGAACG
 ACAACGACAACCTGGCTACAGCCCTATGAGCCTCTGGACCCCGCTGGGCTGTTAATGAGGCAGTGTCCAG
 CGGACCG

AG**CGGACCG**ACGCGTACGCGGCCGCTCGAG - GFP Tag - GTTTAA

Protein Sequence:

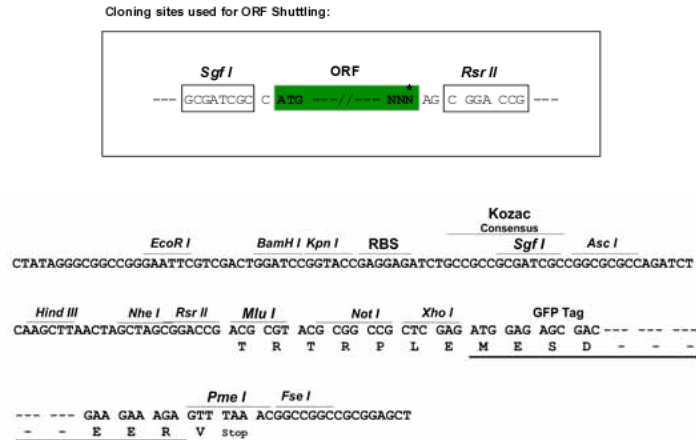
>MG221274 representing NM_172793
 Red=Cloning site Green=Tags(s)

MADFSVFLGFLKQIPRCLSIFFTYLLFLQLWEVNSDKVWVLGPEESILARVGEAVEFPRLSSYQDAEHM
 EIRWFRAQVSNVYLYQEPQGRSSLQMAQFRNRTLFEAYDIAEGSVNLHILNLLPSDEGRYGRFLSHNF
 SGEATWELEVAGSGSDPHISLQGFSGEIQQLQCSSGWYPKPKVQWRGHQGCCLSPSEAITQNAQGLFS
 LETSVIVRGGAHNSVSCIIQNPLLPQKKEFVIQIADVFLPRMSPWKAFVGTLLVPLSLTLTMLALRY
 FYKLRSFQEKRVKQGEVREKLQTELDWRRSEQAERAAQYAADVTLDPATAHPSLEVSNNGTVSSR
 LGVPSIAAGDPQRFSEQTCVLSRERFSSGRHYWEVHVGRRSRWFLLGACLESVERSGPARLSPAAGYVVMG
 LWNRCYFVLDPHRVALALRVPPRRIGVLLDYEAGKLSFFNVSDGSHIFSFTDTFSGALRAYLRPRAHDG
 SEHPDPMTICSLPVRGPQVLEENDNDNLQPYEPLDPAWAVNEAVSSGP

SGP**TRRRLE** - GFP Tag - V

Restriction Sites:

Sgfl-RsrII

Cloning Scheme:


ACCN: NM_172793

ORF Size: 1617 bp

OTI Disclaimer: Due to the inherent nature of this plasmid, standard methods to replicate additional amounts of DNA in E. coli are highly likely to result in mutations and/or rearrangements. Therefore, OriGene does not guarantee the capability to replicate this plasmid DNA. Additional amounts of DNA can be purchased from OriGene with batch-specific, full-sequence verification at a reduced cost. Please contact our customer care team at custsupport@origene.com or by calling 301.340.3188 option 3 for pricing and delivery.

The molecular sequence of this clone aligns with the gene accession number as a point of reference only. However, individual transcript sequences of the same gene can differ through naturally occurring variations (e.g. polymorphisms), each with its own valid existence. This clone is substantially in agreement with the reference, but a complete review of all prevailing variants is recommended prior to use. [More info](#)

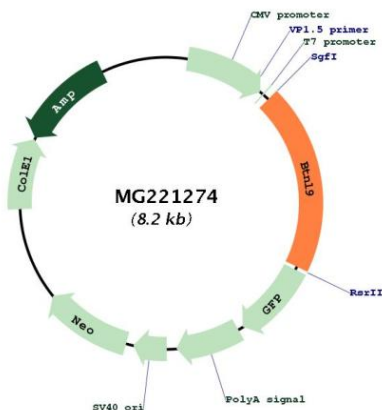
OTI Annotation: This clone was engineered to express the complete ORF with an expression tag. Expression varies depending on the nature of the gene.

Components: The ORF clone is ion-exchange column purified and shipped in a 2D barcoded Matrix tube containing 10ug of transfection-ready, dried plasmid DNA (reconstitute with 100 ul of water).

- Reconstitution Method:**
1. Centrifuge at 5,000xg for 5min.
 2. Carefully open the tube and add 100ul of sterile water to dissolve the DNA.
 3. Close the tube and incubate for 10 minutes at room temperature.
 4. Briefly vortex the tube and then do a quick spin (less than 5000xg) to concentrate the liquid at the bottom.
 5. Store the suspended plasmid at -20°C. The DNA is stable for at least one year from date of shipping when stored at -20°C.

RefSeq: [NM_172793.2, NP_766381.1](#)
 RefSeq Size: 2463 bp
 RefSeq ORF: 1611 bp
 Locus ID: 237754
 UniProt ID: [Q8BJE2](#)
 Cytogenetics: 11 B1.2

Product images:



Circular map for MG221274