

Product datasheet for **MG221269**

Sec14I5 (NM_001127725) Mouse Tagged ORF Clone

Product data:

Product Type:	Expression Plasmids
Product Name:	Sec14I5 (NM_001127725) Mouse Tagged ORF Clone
Tag:	TurboGFP
Symbol:	Sec14I5
Mammalian Cell Selection:	Neomycin
Vector:	pCMV6-AC-GFP (PS100010)
E. coli Selection:	Ampicillin (100 ug/mL)



[View online »](#)

ORF Nucleotide
Sequence:

>MG221269 representing NM_001127725
Red=Cloning site Blue=ORF Green=Tags(s)

TTTTGTAATACGACTCACTATAGGGCGGCCGGGAATTCGTCGACTGGATCCGGTACCGAGGAGATCTGCC
GCCGCGATCGCC

ATGGTGCAAAAATATCAGTCTCCTGTCCGAGTATACAAGTATCCATTGAGCTGGTCATGGCGCCCTACG
AGAAGCGCTTCCCACCTGCCCGCTTATCCCAGCTTTCTGGGGAGTGAAGTCTGGGCGAGTGGCGGAG
CACAGATGGGGCAGTGCACACCGTGGAGCGGAGCTGCAGGCTGCGAGTGGATGCCCGCGCTGCTGCGG
AAGATTGCTGGTGTGGAGCACGTGGTCTTCATTAGAGAAACGTCTGAACTGGAGAGAGAGAACGTCTGC
TGATAGATGCTCACAATGAGACGTTTGGAGCCGAGTGCAGTGAAGGAGAGCTGCCCTACACAGTCCA
TCCTGAGAATGAAGACTGGACTTGCTTTGAACAGTCTGCCTCCCTGGATGTCGCTCTTTCTTTGGCTTT
GAAAGCACGTTGGAGAAGATCGCCATGAAGCAGTACACTGCCAATGTCAAGAGGGGGAAGGAGGTGATTG
AACACTATCTGAATGAGCTCATTCCCAGGGAACATCCCACATCCCGCTGGACACCAGCCCCAGTCCA
GGAGGAGGACGTCGCGAGCCAGCTTGTCGCCAGTGCCTAGCTCCCTGGACATGGAGGGTCCCAGTGAT
GCCCCAGGCCCTGCTTCTGAGATGGCCATAGCGGATGGGACAAGCTGGATGCAGACTACATTGAGAGAT
GTCTGGGCCATCTCAGTCCCATGCAGGAGAGTTGCCTGGTTTACGCTTCGGCACTGGTTACAGGAGACCCA
CAAAGGCAAGATCCCAAAGACGAGCATATCCTGCGCTTCTGAGGGCACGAGACTTCCACCTGGACAAG
GCCCGGACATGTTGTGCCAGTCTTGAGCTGGCGGAAGCAGCACCAGGTGGATCTCCTTCTGCAGACCT
GGCGGCCCCCTCCCCCTGCAGGAGTTCTATGCTGGAGGCTGGCACTACCAGGATATAGATGGCCGCC
CCTTTACATCTGCGCTGGGACAGATGGACACAAAGGCCTGATGAAGGCGGTAGGAGAGGAAGCTCTG
CTGCAGCACGTTCTTTCTGTCAATGAGGAAGGACAGAAGAGATGCGAAGGGAACACGAGACAATTTGGGC
GTCCCATCAGCTCCTGGACCTGCTTGTGGACCTGGAGGGCCTCAACATGCGGCATTTGTGGCGACCTGG
AGTGAAAGCCCTACTGCGGATGATCGAGGTGGTAGAGGACAATTACCCCGAGACTCTGGCAGGCTGCTC
ATCGTGCGTGCTCCCGAGTCTTCCCAGTGTATGGACTGGTTCAGCCCTTCAATGAGAACACCA
GGCGGAAGTTCCTCATCTACAGTGGCAGTAATTACCAGGGCCTGGCGCCTAGTGGACTATCTGGACAA
GGATGTGATCCCTGACTTCTCGGAGGGGAGAGCGTGTGTAATGTTCCAGAAGGAGGGATGGTCCCCAAG
TCCCTCTATCTGACAGAGGAGGAGCAGGAGCAGGCTGACCAGCTACAGCAGTGGAGTGAACCTACCATT
CTGCCAGTGTGCTCCGAGGGACCCCTATGAGGTTGCCATGGAGATACCAGAAGGGGAGTCACTCATCAC
CTGGGACTTTGATATCCTCAGAGGGGATGTGGTGTTCAGTCTGTACCATGCAAAGCAGGCACCCAAGCTC
AGTCCCCAGGAGCCTGGAGTGGAGGCCAGTGGCAGCTGATTGACAAGAGCTGGATCCTGGGGTGGATT
ACAGCCGTGTAGAGGCACCCCTCATCTGCCGGGAAGGGCAGAGCATTACAGGGCTCCCATGTTACTCAGTG
GCCTGGCATCTACCTGCTCCAGTGGCAGATTACAGTTCCCTGAGAGTGTGGCCTGCAGTCTCCAGGT
GTGGATGACGTCCTGACGGCTCTGCACAGCCCTGGCCCCAAGTGAAGCTGCTGTACTACTGTGAAGTGC
TGGCATCTGAAGACTTTAGGGGCTCCATGTCCAGCCTGGAATCCTGTGCCAGCCGCTTCTCTCAGCTCAG
CGCCACCACCTCTTCTCTCTGCGCAGTCCCACAGTGGCTCGATGGTGTCCAGA

ACGCGTACGCGGCCGCTCGAG - GFP Tag - GTTTAA

Protein Sequence: >MG221269 representing NM_001127725
 Red=Cloning site Green=Tags(s)

MVQKYQSPVRVYKYPFELVMAAYEKRFPTCPLIPVFLGSEVLGEWRSTDGAVHTVERSCRLRVDAPRLLR
 KIAGVEHVVF IQRNVLNWRERTLL IDAHNETFASRVTVKESCRTVHPENEDWTCFEQSASLDVRSFFGF
 ESTLEKIAMKQYTANVKRGKEVIEHYLNELISQGTSHIPRWTPAPVQEEDVRSQ LVPQCPSLDMEGPSD
 APGPASEMAIADGDKLDADYIERCLGHLSPMQESCLVQLRHWLQETHKGI PKDEHILRFLRARDFHLDK
 ARDMLCQSLSWRKQHVDLLQLTWRPPPPLQEFYAGGWHYQDIDGRPLYILRLGQMDTKGLMKAVGEEAL
 LQHVLSVNEEGQKRCEGNTRQFGRPISSWTCLLDLEGLNMRHLWRPGVKALLRMI E VVEDNYPETLGRLL
 IVRAPRVFVWLTVSPFINENTRRKFLIYSGSNYQGGGLVDYLDKDVIPDFLGGESVCNVPEGGMVPK
 SLYL TEEEQEQADQLQQWSETYHSASVLRGTPYEVAMEIPEGESVITWDFDILRGDVVFLYHAKQAPKL
 SPQEPGVRASGQLIDKSWILGVDYSRVEAPLICREGQSIQGSHVTQWPGIYLLQWQIHSSPESVACSLPG
 VDDVLTALHSPGPKCLLYYCEVLASEDFRGSMSLSLESCASRFSQLSATTSSSSSQSHSGMVS R

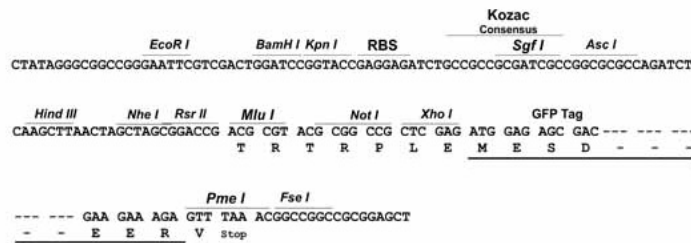
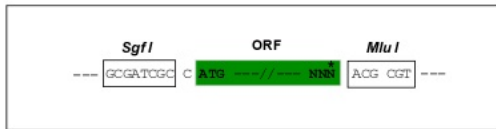
TRTRPLE - GFP Tag - V

Restriction Sites:

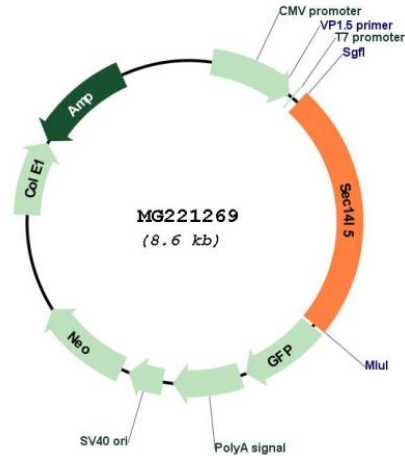
SgfI-MluI

Cloning Scheme:

Cloning sites used for ORF Shuttling:



Plasmid Map:



ACCN: NM_001127725

ORF Size: 2088 bp

OTI Disclaimer: The molecular sequence of this clone aligns with the gene accession number as a point of reference only. However, individual transcript sequences of the same gene can differ through naturally occurring variations (e.g. polymorphisms), each with its own valid existence. This clone is substantially in agreement with the reference, but a complete review of all prevailing variants is recommended prior to use. [More info](#)

OTI Annotation: This clone was engineered to express the complete ORF with an expression tag. Expression varies depending on the nature of the gene.

Components: The ORF clone is ion-exchange column purified and shipped in a 2D barcoded Matrix tube containing 10ug of transfection-ready, dried plasmid DNA (reconstitute with 100 ul of water).

Reconstitution Method:

1. Centrifuge at 5,000xg for 5min.
2. Carefully open the tube and add 100ul of sterile water to dissolve the DNA.
3. Close the tube and incubate for 10 minutes at room temperature.
4. Briefly vortex the tube and then do a quick spin (less than 5000xg) to concentrate the liquid at the bottom.
5. Store the suspended plasmid at -20°C. The DNA is stable for at least one year from date of shipping when stored at -20°C.

RefSeq: [NM_001127725.1](#), [NP_001121197.1](#)

RefSeq Size: 2337 bp
RefSeq ORF: 2091 bp
Locus ID: 665119
Cytogenetics: 16 A1