

Product datasheet for **MG221237**

Mmp27 (NM_001030289) Mouse Tagged ORF Clone

Product data:

Product Type:	Expression Plasmids
Product Name:	Mmp27 (NM_001030289) Mouse Tagged ORF Clone
Tag:	TurboGFP
Symbol:	Mmp27
Synonyms:	Gm180
Mammalian Cell Selection:	Neomycin
Vector:	pCMV6-AC-GFP (PS100010)
E. coli Selection:	Ampicillin (100 ug/mL)



[View online »](#)

ORF Nucleotide Sequence:

>MG221237 representing NM_001030289
 Red=Cloning site Blue=ORF Green=Tags(s)

TTTTGTAATACGACTCACTATAGGGCGGCCGGGAATTCGTCGACTGGATCCGGTACCGAGGAGATCTGCC
 GCC**CGCATCGCC**

ATGCCATACAAACAGAAACAAGCTTTAACTGAAGAGACAGGAATGAAGTGCCTTCTGTCTCTGATGGTTA
 ATTTTATAACACTTTCCGCTGCATTTCTCCAGACAGGAAGGACAAAAATGAGGAGAACAACCAACTGGC
 CCAGGCATATCTCAACCGATTCTACTCTTTGAAATAGAAGGGAGTCATTTTGTCCAAAGCAAGAACAGG
 AGTCTCTTTGATGGAAAACCTTCGGGAAATGCAGGCATTTTTCGGATTGACAGTACTGGAAAACCTGGATT
 CAGACACACTTGCATCATGAAAGTGCCAGGTGTGGGTACCAGATGTGGGCAATATGGCTACACACT
 CCCTGGTGGAGAAAATACAGCCTTACATACAGAATAATGAACTATACTCTGATATGACACCAGCTGAT
 GTGGATGAGGCTATTAGAAAGCTCTACAAGTTTGAGCAAGGTCCTCCACTGACGTTTACCAGGATAT
 CCAAGGGGTTGCAGATAATGATAGCATTGAGGACAGGAGGTAAAGCTTGCAGTGAGGGGAGTGACTT
 CTTGAGGATCACAGGGAGCTGACCTATCTCCCATCAACTGTCTTTCAGTCCATGGCTGGTGCCTCGT
 CACTTTGATGGTCTCTGGGAGTCTTGGCCATGCCTTTCCTCCTGGTCTGGGTCTAGGTGGTGACTCT
 ACTTTGACGAAGATGAAACATGGATAGCCAAGGATGGGGAAGGGTTCAACTTGTTTCTTGTGGCTGCTCA
 TGAATTTGGTCACTCTCTGGGGCTGTCCCACTCCAATGATCAAACAGCCTTGATGTTCCCAATTACATC
 TCCTGGATCCTAGCAAATACCCACTTTCTCAGGATGATATTGATGGGATCCAGTCCATCTATGGAAGTC
 CACCTAAGGTAACCACCAAGCAAGTGGAAATTCGAACCCACGCCTGTGACCCACCTTGACTTTTGA
 TGCTATCACTACTTTCCGAGGGAAGTTATGTTCTTTAAAGGCAGGCCTTATGGAGGCTACTCTGAT
 ATTGCTGGTGTGAGTTGAGTTTATTGATTCCTTCTGGCCATCTCTGCCAGTCTTCAAGCTGCCT
 ATGAAAGCCCCAGAGATGAGCTCTTGTTTTAAAGATGAGAATTTCTGGGTCAATCAGGGGATATTCTGT
 CTTGCCCGGTTACCCCAATCCATCCACACTCGGATTTCCAAGACGTGTAAGAAAATTGATGCAGCC
 GTCTGTGATCATGATACAAGAAAACCTCTTTTTTGTGGCATCTGGTCTGGAGGTATGATGAGATGG
 CACAAGCAATGGACAGAGGATCCACAGAGGATAATAAAGTGCTTCCAGGAATTCGCCTCCGTGTGGA
 TGCTGTCTTCCAACATAATGGATTCTCTATTTCTCCATGGGTGAGGCAATTTGAATATGACATGAAG
 GCGAAAAATACCCCAAGTATCAAACCAATCTTGGTTCCTGTGTAACGAACCATTAACGCATCAT
 TCAATGTCAGTGTCAAAGAAAAGCAAATTCATTTGGCACAGTATTACATCATAAAAGGTTAAGCTT
 GCTCACTTTCAGTATTGTTTCTGCTGACAAAAACATACAAT

ACGCGTACGCGGCCGCTCGAG - GFP Tag - GTTTAA

Protein Sequence:

>MG221237 representing NM_001030289
 Red=Cloning site Green=Tags(s)

MPYKQKQALTEETGMKCLLSLMVNFITLSAAPPDRKDKNEENQLAQAYLNQFYSLIEGSHFVQSKNR
 SLFDGKLREMQAFFGLTVTGKLDSDTLAIMKVPRCGVPDVGQYGYTLPGWRKYSLYRIMNYTPDMTPAD
 VDEAIQKALQVWSKVPLTFTRISKGVADIMIAFRTGGKACSEGSDFEDHRELTYLPINCLSVHGWCP
 HFDGPLGVLGHAFPPGLGLGGDTHFDEDETWIAKDGEGFNLFVAAHEFGHSLGLSHSNDQALMFPNYI
 SLDPISKYPLSQDDIDGIQSIYGSPPKVTTKPSGNSEPHACDPTLTFDAITTFREVMFFKGRHLWRVYSD
 IAGAEFEFIDSFWPSLPADLQAAYESPRDELLVFKDENFWVIRGYSVLPGYPKSIHTLGFPRRVKKIDAA
 VCDHDTRKTFVGIWCWRYDEMAQAMDRGFPQRIKCFPGIRLRVDAVFQHNGLYFFHGRSQFEYDMK
 AKNITQVIKTNWFLCNEPLNASFNVSVKGKANSIGTVILHHKRLSLLTFIVHVLTKTYN

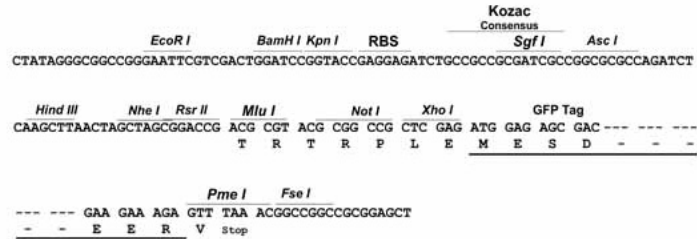
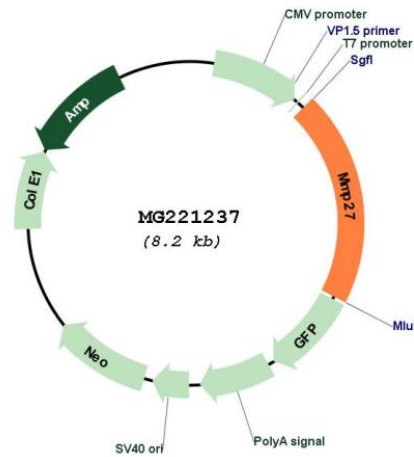
TRTRPLE - GFP Tag - V

Restriction Sites:

Sgfl-MluI

Cloning Scheme:

Cloning sites used for ORF Shutting:


Plasmid Map:


ACCN:	NM_001030289
ORF Size:	1653 bp
OTI Disclaimer:	The molecular sequence of this clone aligns with the gene accession number as a point of reference only. However, individual transcript sequences of the same gene can differ through naturally occurring variations (e.g. polymorphisms), each with its own valid existence. This clone is substantially in agreement with the reference, but a complete review of all prevailing variants is recommended prior to use. More info
OTI Annotation:	This clone was engineered to express the complete ORF with an expression tag. Expression varies depending on the nature of the gene.
Components:	The ORF clone is ion-exchange column purified and shipped in a 2D barcoded Matrix tube containing 10ug of transfection-ready, dried plasmid DNA (reconstitute with 100 ul of water).
Reconstitution Method:	<ol style="list-style-type: none">1. Centrifuge at 5,000xg for 5min.2. Carefully open the tube and add 100ul of sterile water to dissolve the DNA.3. Close the tube and incubate for 10 minutes at room temperature.4. Briefly vortex the tube and then do a quick spin (less than 5000xg) to concentrate the liquid at the bottom.5. Store the suspended plasmid at -20°C. The DNA is stable for at least one year from date of shipping when stored at -20°C.
RefSeq:	NM_001030289.1 , NP_001025460.1
RefSeq Size:	1656 bp
RefSeq ORF:	1656 bp
Locus ID:	234911
Cytogenetics:	9 A1