

## Product datasheet for **MG221232**

### Itga10 (NM\_001081053) Mouse Tagged ORF Clone

#### Product data:

**Product Type:** Expression Plasmids  
**Product Name:** Itga10 (NM\_001081053) Mouse Tagged ORF Clone  
**Tag:** TurboGFP  
**Symbol:** Itga10  
**Synonyms:** A630048L14  
**Mammalian Cell Selection:** Neomycin  
**Vector:** pCMV6-AC-GFP (PS100010)  
**E. coli Selection:** Ampicillin (100 ug/mL)  
**ORF Nucleotide Sequence:** >MG221232 representing NM\_001081053  
 Red=Cloning site Blue=ORF Green=Tags(s)

TTTTGTAATACGACTCACTATAGGGCGGCCGGAATTCGTCGACTGGATCCGGTACCGAGGAGATCTGCC  
 GCC**CGATCGCC**

ATGGAGTCTCTCCATCCCTCACCTGCTCCTGCCCTGGCGTTGCTGACAGGTCTCTGCTCCTCCTTTA  
 ATCTGGATGAACACCACCACGACTCTTACAGGGCCACCAGAGGCCGAATTTGGATACAGTGTCTTACA  
 GCATGTTGGGGTGGACAGCGATGGATGCTGGTGGTGGCCCTGGGATGGGCCATCAGGTACCGGAGA  
 GGGGATGTTTATCGTTGCTCTATAGGGGATTCCACAGTGTCCATGTACCAAAGGCCACCTGGTGACT  
 ATCAACTTGGAAATTCCTCTCAGCCTGCTGTGAATATGCACCTAGGGATGTCTCTACTAGAGACAGATGC  
 TGATGGGGGATTCATGGCCTGTGCCCTCTTTGGTCTCGTGCCTGCGGCAGCTCTGTCTTCAAGTTCTGGA  
 ATATGTGCCCGTGTGGATGCTTCATTCCGGCCCAAGGAAGCCTGGCACCCACCGCCCAACGCTGTCCCA  
 CATACTGGATGTCGTCATTGTTTTGGATGGCTCCAACAGTATCTATCCCTGGTCAGAAGTTCAGACTTT  
 CCTTCGGAGGCTGGTAGGAAGACTGTTTCATCGATCCGGAGCAGATACAGGTAGGACTGGTACAGTACGGG  
 GAGAACCCTGTGCATGAGTGGTCCCTGGGAGACTTCCGAACAAAGGAAGAAGTTGTGAGAGCAGCAAGGA  
 ACCTAAGTCGGAGGGAAGGGCGAGAAACGAGAACCGCCAAGCGATCATGGTGGCATGCACAGAAGGTT  
 CAGTCAGTCCCGGGGGGACGACCAGAGGCCGCTAGGCTGCTGGTAGTTGTCAGTATGGAGAGTCCCAT  
 GATGGAGAGGAACTTCCAGCAGCGCTAAAGGCCGTGAGGCTGGCAGAGTGACAGTTATGGGATGCGG  
 TCCTTGGTCACTATCTCCGGCGACAGAGAGACCCAGCTCTTTTCTTCGGGAAATCAGAGCTATTGCTAG  
 TGATCCAGATGAGCGATTCTTCAATGTACCGATGAAGCTGCGCTGACAGACATTGTGGATGCACTG  
 GGGACCGAATTTTTGGTCTTGAAGGTCCTGGAGAAAATGAAAGCTCCTTTGGGCTAGAAAATGTCTG  
 AGATTGGCTTCTCCATCCACCGACTACAGGATGGGATTCTCTTTGGGATGGTGGGGCCTATGACTGGGG  
 GGGCTCCGTGCTATGGCTTGAAGAAGGTCGCCGCTTTTCCACCACAAGCTGCCCTGGAAGATGAGTTC  
 CCCCTGCGTTGAGAACCATGCGGCCTACCTGGGTTACTCTGTTTCTCCATGCTTCTCCGGTGGAC  
 GCCGCTCTTCTCAGGGCACCGAGGTTAGACATCGAGGAAAAGTTATCGCCTCCAGCTAAAGAA  
 AGATGGGGTTGTGAGGGTCGCCAGAGCCTCCAGGGGATCAGATTGGCTCATACTTTGGCAGCGAGCTC



[View online »](#)

TGCCCGTTGGATACAGATAAGGACGGAATAACTAATATCTTACTTGTGGCGGCTCCCATGTTCTGGGT  
CCCAGAACAAGGAGACCGGACGCGTTTATGTGTACATGGTGGGCCAGAAAATTTGCTAATGCTCCAAGG  
AACCCCTCAGCCAGACCGTTCCAGGATTCCTCGGTTTGGCTTTGCCATGGCTGCTCTTCTGATCTGAAC  
CATGATGGTTTACTGATGTAGCGGTGGGGCACCCCTGGAGGATGGACACCGGGGAGCGTTGTACCTGT  
ATCATGGAACCCAGACTGGAATCAGGCCGATCCTACCCAGAGGATTGCTGCTGTCTCCATGCCACAGGC  
CCTCCGATACTTCGCGCAAGTGTGGATGGCCGCTTAGATCTGGATGGAGATGATCTTGTAGATGTTGCC  
GTGGGTGCCACGGGGCAGCCGTTCTGTTCAAGTCCCAGCCATCATCCACCTGATTC AACCCCTGGATG  
TGATGCCTCCCCACATCAGTGTGGTTCAGAAGGACTGTAAAAGACGAGGCCAGGAAGCAGCCTGTCTGAC  
CGCAGCCCTTTGCTTCCAAGTAGTGTCTCAAACCTCTGGGCGTTGGGATAGAAGATTCTACATAAGATTC  
TCAGCATCACTGGATGAGTGGACCCTGGGGCACGTGCAGTATTCGATGGCTCTGGTCAGCGCCTGTCCC  
CTCGGCAGCTCCAGCTTAGTGTGGCAATGTCACCTTGGAACAGCTGCACCTTCCATGCACCTGGATACATC  
GGATTACCTCCGGCCAGTGGCCTTGACTGTGACTTTTGTGGACAACACCACGAAGCCAGGGCCTGTG  
CTGGCGGAAGGATCCTCTACGACTATACGAAGCTGATCCCTTCTCAAAGGACTGTGGCCCTGACAATG  
AATGTGTACAGACCTGGTGCTTCAAGCTGACATGGACATCAGAGGCTCCAGGAAGTCCCCATTTGTGGT  
TCAAGGTGGACGACAGAAAGTGTGGTGTCTGCGACCCTGGAGAACAAGAAGGAGAATGCCTACAACACT  
AGCCTGAGTCTCAGCTTTTCTAGAAACCTCCACCTGGCCAGTCTTACTCCTCAGAAGGCCAAATCAGTGA  
AGGTGGAGTGCAGTCCCTTCCCCCATACCCGGCTCTGCACCCTGGGGCATCCGGTCTTCCAGACTGG  
GGCCAAGGTGAGCTTCTGTTAGAGTTTGAATTTAGCTGCACCTTCTCCTGAGCCAGGTCTTTGTGAGG  
CTGACTGCCAGTAGCAGTAGCCTAGAGATGAATGAGACCCTTCAAGATAACACAGCTCAGACCTCTGCCT  
ACATCCGGTACGAACCTCACCTCGTGTCTCCAGTGAGTCCACTCTGCATCGGTATGAGGTTACCCCTTA  
TAGGACTCTCCAATGGGTCCTGGCCCTGAATTCAGACCACTCTTAGGGTTCAGAATCTTGGTTGCCAT  
GTGGTCAGTGGTCTCGTCATCTCCGCCCTCCTTCCAGCTGTAGCCATGGGGTAACACTTCTCTGTAC  
TATCTCAAGTCATCTTGCAATGCAAGTGCACGGTGCAGAACCTGACTGAGCCCCGGGCTTCCCTGT  
GCACCCAGAGGAGCTTCAAGCATGCAAGCAGACTGAATGGGAGTAACAGTCGATGTCAAGGTGTAAGGTGC  
CACCTTGGACTGTGGCAAAGGGGACTGAGATCTCTGTCAGGCTGCTGAGGCTGTTTCAATGAATTCT  
TTCGGAGGGCCAAGTTCAAGTCTGTGACAGTGGTCAAGCTTCAAGTTAGGAAGTGAAGGAGGCGAGTGT  
CCTACTACTGAATGAAGCCTCCCGCTCGAGTGAGAGTCACTTGGAGGTGATTAGACCCACCCGACCCTC  
ATCTCCCTGTGGATCCTCGTTGGCAGTGTCTGGGGGGGCTGCTCCTGCTTGTCTCCTTGTCTTCTGCC  
TGTGGAAGCTTGGCTTTTACCCGTAAGAAAATCCCCAAGAAGAAGAAAGTGAAGGAGAAGTTGGAGCA  
G

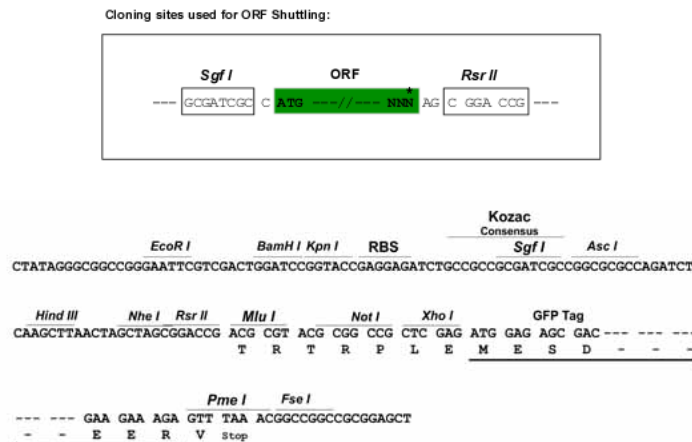
AGCGGACCGACGCGTACGCGGCCGCTCGAG - GFP Tag - GTTTAA

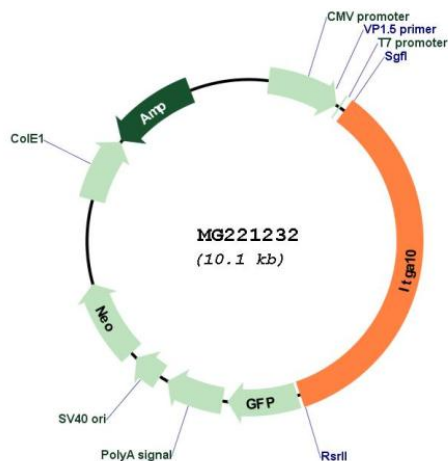
**Protein Sequence:** >MG221232 representing NM\_001081053  
 Red=Cloning site Green=Tags(s)

```
MESLSIPHLLPLALLTGLCSSFNLDEHHPRLFTGPPEAEFGYSVLQHVGGGQRWMLVGAPWDGPGSGDRR
GDVYRCSIGGFHSAPCTKGHLGDYQLGNSSQPAVNMHLGMSLLETADGGFMACAPLWSRACGSSVFS
ICARVDASFRPQGS LAPTAQRCPYMDVVIVLDGSNSIYPWSEVQTFLLRRLVGR LFIDPEQIQVGLVQYG
ENPVHEWSL GDFRTKEEVVRAARNL SRREGRETRTAQAIMVACTEGF SQSRGGRPEAARLLVVVTDGESH
DGEELPAALKACEAGRVTRYGIAVLGHYLRQRDPSSFLREIRAIASDPDERFFFNV TDEAALTDIVDAL
GDRIFGLEGRGENESSFGLEMSEIGFSIHRLQDGILFGMVGAYDWGGSVLLWEEGRRLFPPQAAL EDEF
PPALQNHAA YLGYSVSSMLLPGGRRLFLSGAPFRHRGKVI AFQLKKDGVV RVAQSLQGDQIGSYFGSEL
CPLD TDKDGITNILLVAAPMFLGPQNKETGRVYVYVMGQQNLLMLQGTLPDRSQDSRFGFAMAALPDLN
HDGF TDVAVGAPLEDGHRGALYL YHGTQTGIRPHPTQRIAAV SMPQALRYFGRSVDGRDL DGDGDLVDVA
VGAHGA AVLFSSQPIIHLIPTLDVMPPHISVVQKDC KRRGQEAACLTAAALCFQVVSQTPGRWDRRFYIRF
SASLDEW TAGARAVFDGSGQRLSPRQLQLSVGNVTCEQLHFHALDTS DYLRPVALTVTFALDNTTKPGPV
LAEGSSTTIRKLI PF SKDCGPDNECVTDLVLQADMDIRGSRKSPFVVQGGRQKVLVSATLENKKENAYNT
SLSLSFSRNLHLASLTPQKAKSVKVECAVSPHTRLCTVGHVPVFTGAKVSFLLEFEFSCTFLLSQVFVR
LTASSSLEMNETLQDN TAQTSAYIRYEPHLVFSSESTLHRYEVHPYRTLPMGPGPEFKTTLRVQNLGCH
VYVGLVISALLPAVAHGNYFLSLSQVISGNASCTVQNLTEPPGFVHP EELQHASRLNGSNSRCQVVR
HLGLLAKGTEISVRLRLVHNEFFRRAKFSVTVVSTFKLGTEEGSVLLLNEASRSSESHLEVIQTHPTL
ISLWILVGSV LGGLLLLALLVFCLWKLGFTRKKIPKEEESEEKLEQ
```

SGPTRRRLE - GFP Tag - V

**Restriction Sites:** SgfI-RsrII  
**Cloning Scheme:**



**Plasmid Map:**


**ACCN:** NM\_001081053

**ORF Size:** 3501 bp

**OTI Disclaimer:** The molecular sequence of this clone aligns with the gene accession number as a point of reference only. However, individual transcript sequences of the same gene can differ through naturally occurring variations (e.g. polymorphisms), each with its own valid existence. This clone is substantially in agreement with the reference, but a complete review of all prevailing variants is recommended prior to use. [More info](#)

**OTI Annotation:** This clone was engineered to express the complete ORF with an expression tag. Expression varies depending on the nature of the gene.

**Components:** The ORF clone is ion-exchange column purified and shipped in a 2D barcoded Matrix tube containing 10ug of transfection-ready, dried plasmid DNA (reconstitute with 100 ul of water).

**Reconstitution Method:**

1. Centrifuge at 5,000xg for 5min.
2. Carefully open the tube and add 100ul of sterile water to dissolve the DNA.
3. Close the tube and incubate for 10 minutes at room temperature.
4. Briefly vortex the tube and then do a quick spin (less than 5000xg) to concentrate the liquid at the bottom.
5. Store the suspended plasmid at -20°C. The DNA is stable for at least one year from date of shipping when stored at -20°C.

**RefSeq:** [NM\\_001081053.1](#), [NP\\_001074522.1](#)

**RefSeq Size:** 5044 bp

**RefSeq ORF:** 3504 bp

**Locus ID:** 213119

**Cytogenetics:** 3 F2.1