

## Product datasheet for **MG221223**

### **Kcnt2 (NM\_001081027) Mouse Tagged ORF Clone**

#### Product data:

**Product Type:** Expression Plasmids  
**Product Name:** Kcnt2 (NM\_001081027) Mouse Tagged ORF Clone  
**Tag:** TurboGFP  
**Symbol:** Kcnt2  
**Synonyms:** E330038N15Rik; Slick  
**Mammalian Cell Selection:** Neomycin  
**Vector:** pCMV6-AC-GFP (PS100010)  
**E. coli Selection:** Ampicillin (100 ug/mL)  
**ORF Nucleotide Sequence:** >MG221223 representing NM\_001081027  
**Red=Cloning site Blue=ORF Green=Tags(s)**

TTTTGTAATACGACTCACTATAGGGCGGCCGGAATTCGTCGACTGGATCCGGTACCGAGGAGATCTGCC  
GCC**CGATCGCC**

ATGGTTGATTTGGAGAGCGAAGTGCCCCCTCTGCCTCCCAGGTACAGATTCGGGATTTGCTGCTAGGGG  
ACCAAGGCTGGCAAAATGATGACAGGGTCCAAGTTGAATTCTACATGAACGAAAACACATTTAAAGAGAG  
ATTTAAACTGTTTTTCATAAAAAACCAGCGATCAAGTCTAAGAATCCGCTTGTTCAACTTTCCCTGAAG  
TTGTTAAGCTGCTTATTATATATTATCCGTGTGTTGCTTGAGAAACCGTCACAGGGAAGTGAATGGTCTC  
ACATATTTTGGGTTAACCGAAGTCTACCTTTATGGGGTTACAGGTCTCAGTGGCATTGATAAGTCTATT  
TGAACAATACTCCTTGGTTATCTCAGTTATAAGGAAAATATCTGGGAGCAGATTTTACGAATCCATTC  
ATCTTGAAATAATCAATGCAGTCCCCTTCATCATCTCAATATTCGGCCACCTTAAGAAATCTATTTG  
TTCCAGTTTTTCTAAATTGTTGGCTTGCCAAACATGCCTTGAAAATATGATTAATGATCTCCATAGAGC  
CATTACAGCTACACAGTCTGCAATGTTAATCAAGTTTGATTTTGATATCTACTTTACTATGCCTTATC  
TCACTTGCATTTGTGGGATTGAGCATCTAGAACGAATGGCAAGAAGCTCAATCTTTGACTCCCTTT  
ATTTCTGCATTGTGACATTTTCTACTGTGGGCTTTGGGGATGTCCTCTGAAACATGGTCTCCAAGCT  
CTTTGTCGTTGCTATGATCTGCGTTGCCCTTGTAGTACTCCCTATACAGTTTGAACAGTTGGCCTATTTG  
TGGATGGAGAGACAAAAGTCAGGAGGAACTACAGTCGACACAGAGCTCAGACAGAGAAGCATGTTGTCC  
TGTGTGCAGCTCCTGAAGATTGACTTACTTATGGATTTTCTAAATGAGTTCTATGCGCATCCAAGACT  
ACAGGATTATTACGTGGTGATTTTGTGTCCCACGGAGATGGATGTGCAAGTTCGGAGAGTACTACAGATT  
CCAATGTGGTCCCAGAGAGTGATCTACCTCAAGGCTCTGCCCTTAAAGACCAGGATCTCCTGAGAGCAA  
AGATGGACAATGCTGAGGCTGTTTCAATTTGAGTAGCCGCTGCGAAGTGGATAGAACCTCATCTGATCA  
CCAAACAATCTTGAGAGCATGGGCTGTGAAAGATTTTGCCTCTGTATGTTGATGTTGATGTTGATGTTA  
AAACCAGAAAACAAATCCACATCAAAATTTGCAGATCATGTTGTTGTGAAGAAGAGTTAAAGTACGCCA  
TGTTAGCTTTAACTGTATATGCCAGCAACATCTACACTCATTACACTACTGGTTCATACCTCTAGAGG  
GCAAGAAGGGCAGCAGTCACCTGAACAGTGGCAGAAGACTTACGGGAGGTGCTCAGGAAACGAAGTCTAT



CACATCGTTTTGGAAGAAAGTACATTTTTTGTGAATATGAAGGGAAGAGTTTTACCTATGCTTCTTTTC  
 ATGCCACAAAAAGTTTGGTGTCTGCTTGGTGGTGTAGGAGGGAGGATAATAAAAAACATTTTGTGAA  
 TCCAGGTCCTCGATACATTATGAATGCTTCAGACATATGTTTTTATTAATATTACCAAAGAAGAAAAAT  
 TCAGCATTTAAGAATCAAGACCAACAGAGAAAAAGTAATGTGTCAAGGTCATTTTATCATGGCCTTCCA  
 GATTGCCTGTCCACAGCATATTGCCAGCATGGTACTGTGGCTATAGACTTGAAGACACAAGCTGCAG  
 AGCAACAAGTGGCCCCACCCTGGCTCTTCTTCAGAGGGAGGCAAGAATTAAGAAGACCTAGCATTGCT  
 CCTGTTTTAGAGGTGGCAGATACATCAATTCAAACATGCGATCTCCTAAGTACCAGCTCCGAAGATG  
 AAACACACCAGATGAAGAAACATCTTCAAATTTAGAGTATGCCAAAGGCTACCCACCTTATTTCCCCATA  
 CATAGGAAGTTCACCTACTTTTTGTACCTACTTCAAGAAAAAGTGCATTTTGTGCTTAAAGATTAGAC  
 AAGAGTTGCCAGCATAACTACTATGAGGACGCAAAAGCCTATGGATTCAAAAAATAAATAATTATAGTTG  
 CAGCTGAAACAGCTGAAATGGACTATATAATTTTATTGTACCTCTCAGGGCATATTATAGACCAAAGAA  
 AGAATTAATCCCATAGTTCTGCTATTGGATAACCCGCCAGATATGCATTTTCTGGATGCAATCTGTTGG  
 TTTCCAATGGTTTACTACATGGTGGGCTCTATTGACAACCTAGATGATTTGCTCAGGTGTGGAGTGACCT  
 TTGCTGCCAACATGGTGGTGGTGGACAAAGAAAGCACCATGAGTGCAGAGGAAGACTACATGGCAGATGC  
 CAAGACGATTGTGAATGTGCAGACTCTGTTGAGTTGTTTTCAAGTCTCAGTATCATCAGTACCTACG  
 CATCCAGCAAATATGAGATTCATGCAATTCAGAGCCAAGGATTGTTACTCTCTCGCGCTTCAAAACTGG  
 AAAAGAAAGAAAGAGAACGAGGTTCTAAGTGGCCTTTATGTTTTGACTGCCTTTTGTGCGGGAAGAGT  
 GTTCAGCATCAGTATGTTAGACACCTTCTTTATCAGTCAATTTGTGAAAGATTATATGATTTCTATCACC  
 AGACTTCTTTTGGGACTGGACACCATACCAGGATCGGGGTTTTCTTTGTTCTATGAAAACTACTGAAGATG  
 ACTTGTGGATCAGAACGTATGCCAGACTCTATCAGAAGTTGTGTTCTTCTACTGGAGATGTTCCCATCGG  
 GATCTACAGAACGAAATCTCAGAACTAACGACATCTGAGTCTCAAATATCCATTAGTGTGAAGAGTGG  
 GAAGACCAAAGATGTCAAAGACCCAGGGCACCACCGCAGCCTTCAACCGCAACTCAACGCTAGTGACC  
 AGTCGGACCATCCCTTGTGCGGAGGAAGAGCATGCAGTGGGCCGGAAGGCTGAGCAGAAAAAGGCCGAA  
 GCACCTCTGGTAAAACAGCAAAAAATAACTCAACAGCGACTGAACCTCTACCGGAGATCCGAAAGACAG  
 GAGCTTGTGAACTGTGAAAAACAGAATGAAACACCTGGGCTCTCGACGGTGGGCTACGATGAAATGA  
 ATGATCATCAGAGCACCTGTCTACATCCTGATTAATCCGCTCTCCAGACACCAGGCTTGAAGTGAATGA  
 TGTGATATTTGATCCGACCAGATCCACTGTCTACCTTCAAACAGTGAACCCAGTAGAAAAACAGC  
 ATCTGCAATGCCGCTGTTCAAGATTCTCGGGAGGAACTCAACTC

ACGCGTACGCGGCCGCTCGAG – GFP Tag – GTTTAA

**Protein Sequence:**

>MG221223 representing NM\_001081027  
 Red=Cloning site Green=Tags(s)

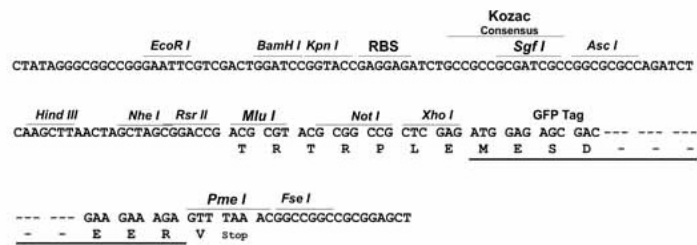
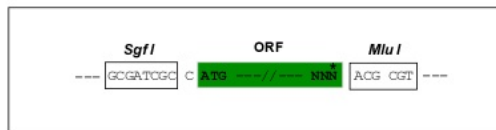
MVDLESEVPLPPRYRFRDLLLLGDQGWQNDQVQVEFYMNENTFKERLKLFFIKNQRSSLRIRLNFNLSK  
 LLSCLLYIIRVLLLEKPSQGESEWSHIFWVNRSLPLWGLQVSVALISL FETILLGYLSYKNGIWEQILRIPF  
 ILEIINAVPFIISIFWPTLRNLFVPVFLNCWLAKHALENMINDLHRAIQRTQSAMFNQVLIILISTLLCLI  
 FTICIGIQHLERIGKKNLFDLSYFCIVTFSTVGFQDVTPEWSSKLFVVAMICVALVVLPIQFEQLAYL  
 WMERQKSGGNYSRHAQTEKHVVL CVSSSLKIDLLMDFLNEFYAHPRLQDYVVVILCPTMDVQVRRVLQI  
 PMWSQRVIYLGQSALKDQDLLRAKMDNAEACFILSSRCEVDRTSSDHQTLRAWAVKDFAPNCPLYVQIL  
 KPENKFHIKFADHVVEEEFKYAMLALNCIPATSTLITLLVHTSRGQEQQSPEQWQKTYGRCSGNEVY  
 HIVLEESTFFAEYEGKSFTYASFHAKKFGVCLVGRREDKNILLNPGPRYIMNASDICYFINITKEEN  
 SAFKNQDQQRKSNVRSFYHGSPRLPVHSIIASMGTVADLQDTSCRATSGPTLALPSEGGKELRRPSIA  
 PVLEVADTSSIQTCDLLSDQSEDETPDEETSSNLEYAKGYPPSPYIGSSPTFCHLLQEKVPFCCLRLD  
 KSCQHNYVEDAKAYGFKNKLIIVAAETAGNLYNFIVPLRAYRPPKELNPIVLLDNDPPDMHFLDAICW  
 FPMVYVMVGSIDNLDLLRCGVTFANMVVVDKESTMSAEEDYMAKTIIVNVQTLFRLFSSLIIITELT  
 HPANMRFMQFRAKDCYSLALSKLEKKEREGSNLAFMFRLPFAAGRVFSISMLDITLLYQSFVKDYMSIT  
 RLLLLGLDTIPGSGLCSMKITEDDLWIRTYARLYQKLCSSSTGDVPIGIYRTESQKLTTSSESQISISVEEW  
 EDTKDVKDPGHHRSLHRNSTSSDQSDHPLLRRKSMQWARRLSRKGPKHSGKTAEKITQQLNLYRRSERQ  
 ELAELVKNRMKHLGLSTVGYDEMNDHQSTLSYILINPSPDTRLELNDVVYLIRPDPLSYLPNSEPSRKNS  
 ICNAAVQDSREETQL

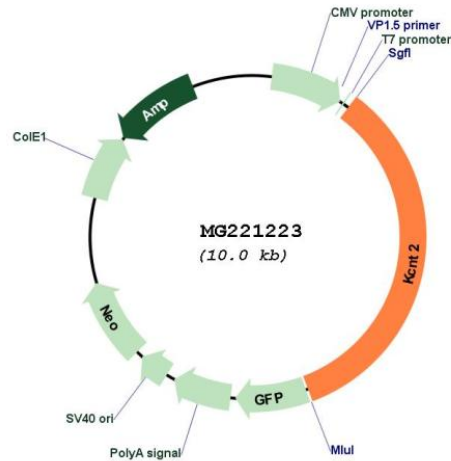
TRTRPLE – GFP Tag – V

Restriction Sites: SgfI-MluI

Cloning Scheme:

Cloning sites used for ORF Shuttling:



**Plasmid Map:**


**ACCN:** NM\_001081027

**ORF Size:** 3405 bp

**OTI Disclaimer:** The molecular sequence of this clone aligns with the gene accession number as a point of reference only. However, individual transcript sequences of the same gene can differ through naturally occurring variations (e.g. polymorphisms), each with its own valid existence. This clone is substantially in agreement with the reference, but a complete review of all prevailing variants is recommended prior to use. [More info](#)

**OTI Annotation:** This clone was engineered to express the complete ORF with an expression tag. Expression varies depending on the nature of the gene.

**Components:** The ORF clone is ion-exchange column purified and shipped in a 2D barcoded Matrix tube containing 10ug of transfection-ready, dried plasmid DNA (reconstitute with 100 ul of water).

**Reconstitution Method:**

1. Centrifuge at 5,000xg for 5min.
2. Carefully open the tube and add 100ul of sterile water to dissolve the DNA.
3. Close the tube and incubate for 10 minutes at room temperature.
4. Briefly vortex the tube and then do a quick spin (less than 5000xg) to concentrate the liquid at the bottom.
5. Store the suspended plasmid at -20°C. The DNA is stable for at least one year from date of shipping when stored at -20°C.

**RefSeq:** [NM\\_001081027.3](#)

**RefSeq Size:** 3957 bp

**RefSeq ORF:** 3408 bp

**Locus ID:** 240776

**Cytogenetics:** 1 F