

Product datasheet for **MG221182**

Zscan22 (NM_001001447) Mouse Tagged ORF Clone

Product data:

Product Type:	Expression Plasmids
Product Name:	Zscan22 (NM_001001447) Mouse Tagged ORF Clone
Tag:	TurboGFP
Symbol:	Zscan22
Synonyms:	AW227621; D530006B18Rik; Hkr2
Mammalian Cell Selection:	Neomycin
Vector:	pCMV6-AC-GFP (PS100010)
E. coli Selection:	Ampicillin (100 ug/mL)



[View online »](#)

ORF Nucleotide Sequence:

>MG221182 representing NM_001001447
 Red=Cloning site Blue=ORF Green=Tags(s)

TTTTGTAATACGACTCACTATAGGGCGGCCGGGAATTCGTCGACTGGATCCGGTACCGAGGAGATCTGCC
 GCC**CGGATCGCC**

ATGGCCATCCCCAAGAGCCCTCTGAGCCAGTACTCTGGGAACAGGATAGCTTCCTTCAGGTGAAGGTGA
 AAGAGGAGGAAGAAGCTAGCGACTCCCCGAGCCAGGAATCCAGCCCTAGCTTTACTGCCACCCTGAGGC
 TGCACGATTGCGCTTCAGGCACTTCGCTATGAGGAGGCATCCAGCCCTCATCAGCGCTAGCCCACTG
 CGAGAGCTATGTTGCCAGTGGCTGAGGCCAGAGTCGTCCTCAAAGAACAGATGCTGGAGTTGCTGGTGC
 TGGAGCAGTTCTGGGTGCGCTGCCCTGAGATCCAGGCCTGGTGGTCTCAGTGCCCAAAGAGTGG
 AAAGGAGGCTGCCGTTCTGGTGGAGGATATGACTCAACTGCTGGACAGGAGAGGATGGGAGCCAGGAGTG
 GAACGTGAAGAGGCAAGTTGCAAACAGAGCAATACAGATGAATTGGAGCCACCAAAAATGGCGACTGAAA
 CTGTCATGGGAAGCGTTTGC AAAATCTACCCTTGCCACACTTGTAACCTGAGAGCCACTCAGAGAG
 CCAGCCAGAATTCCTAGGAGCACTCTGGATGAAGTCTACTGCCCAAGAGATGGATTTTCAGAAAAGCTCTG
 GGGCCTCATATGGATGCCCCAAAGACCAGCCTGGCCATGAGTCTAACACCTCAGGAAACGGTTCCAACA
 TGTGGCCCAACTCCCTCCCAAGACAAGGCTTCTTCAGAGGAGAAATTTGGCCATTACTTGATAATGA
 GACAGTGCCTCCAGATACTTGCTCAGAGAAGAAATCCTCCAAGGATAGTGAATGTTTGAAAACATCCAG
 AACACTTCAGCTCTGGAGGCCACCAGAAGAGCCACTCTCAGAAGACGCCCTATGCCTGTACTGAGTGTG
 GGAAGGTATTCAGTCGGAGCACCCACCTTGCCAACACCAGGTTGTTACACAGGAGCAAAGCCCATGC
 GTGTAAGAGTGTGGTAAAGCCTCAGTCGCGTTGCCACCTGACACAGCACCTGAGGATTCATACTGGG
 GAGAAGCCTTATAATGTGAGGAATGTGGTAAAACCTTCAGCCGACGACCCACCTCAGCAGCACCAGC
 GAGTACACACAGCGGAGCGGCCCTACGAGTGTGATACTTGGGCAAAGCCTTCAGCCAGAGCACCACCT
 GACACAGCACAGCGCATCCACACCGGGGAGAAGCCCTACAGGTGTGATGTGTGTGGGAAAGCCTTCAGT
 GACTGTTGAGCTCTGGTCCGGCACCTGAGAGTCCACTCTGGAGAGAAGCCTTATCAATGTAAAGACTGCC
 CGAAGGCCTTCGCACAAAGCTCCTCCCTCATTGAGCACCAGCGCACTCACACAGGTGAAAAGCCTTATAA
 ATGCACTGACTGTGGGAAAGCTTTAGCCGAGCTCAGCTCTCATGGTGCACCTAAAGATCCATATCACC
 GTGACTCGAAGCACCCCT

ACGCGTACGCGGCCGCTCGAG – GFP Tag – GTTTAA

Protein Sequence:

>MG221182 representing NM_001001447
 Red=Cloning site Green=Tags(s)

MAIPKSPLSPVLWEQDSFLQVKVEEEEASDPSQESSPSFTAHPAARLRFRHFRYEEASSPHQALAQ
 RELCCQWLRESSSKEQMLELLVLEQFLGALPPEIQAWVGAQCPKSGKEAAVLVEDMTQLLDRRGWEPGV
 EREEASCKQSNTDELEPPKMATEVMGSVLPKSTLAHTCKPESHSESQPEFLGALWMKSTAQEMDFRKAL
 GPHMDAPKDQPGHESNTSGNGSNMWPNFPSQDKASSEKFGPLLDNETVPPDTCSEKSSKDSECLKTFQ
 NTSALAEHQKSHSQKTPYACTECGKVF SRSTHLVQHVVHTGAKPHACKECGKAFSRVAHLTQHRLRIHTG
 EKPYKCEECKTF SRSTHLTQHQRVHTGERPYECDTCGKAFSQSTHLTQHQRHTGKPYRCDVCGKAFS
 DCSALVRHLRVHSGEKPYQCKDCPKAFAQSSSLIEHQRTHTGKPYKSDCGKAFSRSSALMVHLKIHT
 VTRSTP

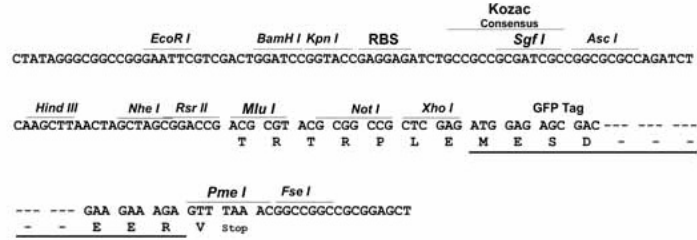
TRTRPLE – GFP Tag – V

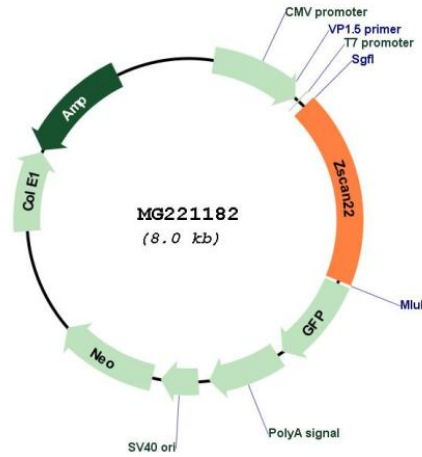
Restriction Sites:

Sgfl-MluI

Cloning Scheme:

Cloning sites used for ORF Shutting:



Plasmid Map:


ACCN: NM_001001447

ORF Size: 1488 bp

OTI Disclaimer: The molecular sequence of this clone aligns with the gene accession number as a point of reference only. However, individual transcript sequences of the same gene can differ through naturally occurring variations (e.g. polymorphisms), each with its own valid existence. This clone is substantially in agreement with the reference, but a complete review of all prevailing variants is recommended prior to use. [More info](#)

OTI Annotation: This clone was engineered to express the complete ORF with an expression tag. Expression varies depending on the nature of the gene.

Components: The ORF clone is ion-exchange column purified and shipped in a 2D barcoded Matrix tube containing 10ug of transfection-ready, dried plasmid DNA (reconstitute with 100 ul of water).

Reconstitution Method:

1. Centrifuge at 5,000xg for 5min.
2. Carefully open the tube and add 100ul of sterile water to dissolve the DNA.
3. Close the tube and incubate for 10 minutes at room temperature.
4. Briefly vortex the tube and then do a quick spin (less than 5000xg) to concentrate the liquid at the bottom.
5. Store the suspended plasmid at -20°C. The DNA is stable for at least one year from date of shipping when stored at -20°C.

RefSeq: [NM_001001447.3](#), [NP_001001447.1](#)

RefSeq Size: 2620 bp

RefSeq ORF: 1491 bp

Locus ID: 232878

Cytogenetics: 7 A1