

## Product datasheet for **MG221172**

### **Klf14 (NM\_001135093) Mouse Tagged ORF Clone**

#### Product data:

**Product Type:** Expression Plasmids  
**Product Name:** Klf14 (NM\_001135093) Mouse Tagged ORF Clone  
**Tag:** TurboGFP  
**Symbol:** Klf14  
**Synonyms:** 5330411L03Rik; AL022736; BTEB5  
**Mammalian Cell Selection:** Neomycin  
**Vector:** pCMV6-AC-GFP (PS100010)  
**E. coli Selection:** Ampicillin (100 ug/mL)  
**ORF Nucleotide Sequence:** >MG221172 representing NM\_001135093  
 Red=Cloning site Blue=ORF Green=Tags(s)

TTTTGTAATACGACTCACTATAGGGCGCCGGGAATTCGTCGACTGGATCCGGTACCGAGGAGATCTGCC  
 GCC**CGATCGC**C

ATGTCGGCCGCGTGGCTTGCTGGACTACTTCGCTGCCGAGTGCCTGGTGTCTATGTCCACCCGCGCCG  
 TGCTGCACCGGCGCAACGGACCCGAAGGCGGAGCGCAGCGGCTGTCTCCGAGGTGGGTGCAGTGTG  
 TCGGGAGTCGGCGGGGAAGGGTACCGGGTACGGGGGTGCTGTGGATACCCCACTCCAGGTCCCC  
 ACCCCGAGCCCCGAGAAGGCGATGGCGCGCCCCACCTGCTGGTGCAGCGCTTTGGCTGATTTAAGT  
 GTGGTCCCGGAAGACTTCAGGAAGACTCCGAAGAAGTCCGTGTGCCTCACTAGCTGCTTCGAGCC  
 GACTGCTGCTCCAGCCCTACTGGGGCTCTGAGCCTACCCAGGCCTTCTTCGAGGATGAGCTCTGAC  
 GCCGAGAGCTCCTGCAGTGATTCTGCTATCCTGGATGCGCCTGAGGCCTCAGAGGAGCCGGATGACAGCG  
 GAGAAGTGCCCGAGGGGCCCCAGGGGCCCCCTGCGCCATCAACGGGCCCCGACGTACCGAAGGAGGCA  
 GATTACGCCCCGATCCAAGCGACATCAGTGCTCCTTCCATGGCTGCAACAAGGCCACTACAAGTCGTG  
 CACCTCAAGTCACACCAGCGTACCCACACGGGGGAACGCCCTTCTCCTGTGATTGGCTCGACTGCGACA  
 AGAAGTTTACGCGTTCTGATGAGCTAGCCCGCCACTACAGGACGCACACCGGTGAAAAGCGCTTCTCCTG  
 CCCGCTGTGTCCAAGCAGTTCTCTCGGAGCGACCACCTGACCAAGCATGCTCGTCGCCATCCAACCTAC  
 CATCCCACATGATCGAGTACCGAGGTCGTCGTCGCACTCCCCGCCCTGAGCCACCACCCCGAGCCATGG  
 TGGAAAGCTCTGGTTCGACTCCAGCTCCTCTTCTGGCCAGGAGACCAGTTCAGTCTTGCTGCTG

AGCGGACCGACGCGTACGCGCCGCTCGAG - GFP Tag - GTTTAA



[View online »](#)

**Protein Sequence:** >MG221172 representing NM\_001135093  
Red=Cloning site Green=Tags(s)

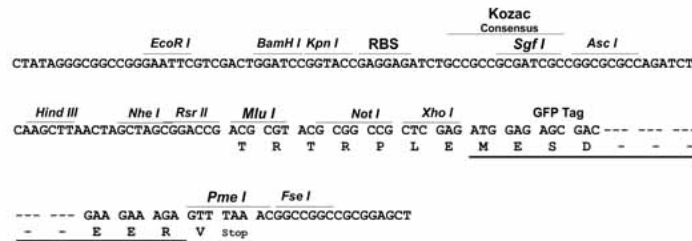
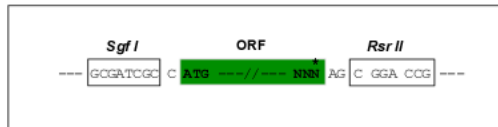
MSAAVAQLDYFAAECLVSMSTRAVLHRRATDPEGASAAAVSEVGAVSRESAGKGTGSRGVLWIPPVLQVP  
 TPSPGEGDGAPHLLAASALADLSCGAREDFREDSEEAPCASTSCFEPTWCSSPTGGSEPTQAFDELDSD  
 AESSCSDSAILDAPEASEEPDDSGEVPEGPPGARPPAPSTGPTYRRRQITPASKRHQCSFHGCNKAYKSS  
 HLKSHQRTHTGERPFSCDWLDCDKKFTRSDALARHYRHTHTGEKRFSCPLCPKQFSRSDHLTKHARRHPTY  
 HPDMIEYRGRRTPRPEPPPPAMVESSGSDSSSSSGQETSFTACL

SGPTRRRLE - GFP Tag - V

**Restriction Sites:** SgfI-RsrII

**Cloning Scheme:**

Cloning sites used for ORF Shuttling:



**ACCN:** NM\_001135093

**ORF Size:** 975 bp

**OTI Disclaimer:** The molecular sequence of this clone aligns with the gene accession number as a point of reference only. However, individual transcript sequences of the same gene can differ through naturally occurring variations (e.g. polymorphisms), each with its own valid existence. This clone is substantially in agreement with the reference, but a complete review of all prevailing variants is recommended prior to use. [More info](#)

**OTI Annotation:** This clone was engineered to express the complete ORF with an expression tag. Expression varies depending on the nature of the gene.

**Components:** The ORF clone is ion-exchange column purified and shipped in a 2D barcoded Matrix tube containing 10ug of transfection-ready, dried plasmid DNA (reconstitute with 100 ul of water).

**Reconstitution Method:**

1. Centrifuge at 5,000xg for 5min.
2. Carefully open the tube and add 100ul of sterile water to dissolve the DNA.
3. Close the tube and incubate for 10 minutes at room temperature.
4. Briefly vortex the tube and then do a quick spin (less than 5000xg) to concentrate the liquid at the bottom.
5. Store the suspended plasmid at -20°C. The DNA is stable for at least one year from date of shipping when stored at -20°C.

**RefSeq:** [NM\\_001135093.1](#), [NP\\_001128565.1](#)

**RefSeq Size:** 2970 bp

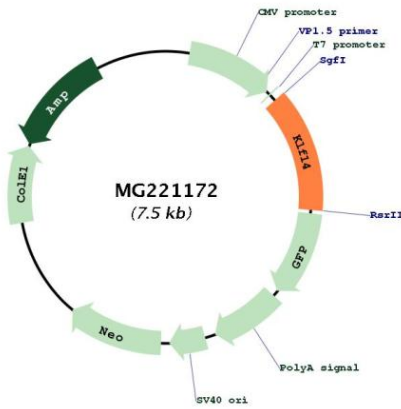
**RefSeq ORF:** 978 bp

**Locus ID:** 619665

**UniProt ID:** [Q19A41](#)

**Cytogenetics:** 6 A3.3

**Product images:**



Circular map for MG221172