

Product datasheet for **MG221151**

Hps3 (NM_001146324) Mouse Tagged ORF Clone

Product data:

Product Type:	Expression Plasmids
Product Name:	Hps3 (NM_001146324) Mouse Tagged ORF Clone
Tag:	TurboGFP
Symbol:	Hps3
Synonyms:	coa
Mammalian Cell Selection:	Neomycin
Vector:	pCMV6-AC-GFP (PS100010)
E. coli Selection:	Ampicillin (100 ug/mL)



[View online »](#)

ORF Nucleotide Sequence:

>MG221151 representing NM_001146324
 Red=Cloning site Blue=ORF Green=Tags(s)

TTTTGTAATACGACTCACTATAGGGCGGCCGGAATTCGTCGACTGGATCCGGTACCGAGGAGATCTGCC
 GCC**CGCATCGCC**

ATGGTGCCTGTACAACCTGCACCCGTTTGGGTGCGCAGCAGGTAGTCCCCTGCCAGTGGGAGCCGGAGC
 AGGTCTGCTGCGGCGGGAGCGACGCGCTGTTCTGGCTGCGCGCTGCAAGGTGGAGGCGTTCGCTGTTC
 GGGCGAAGAGCTGTGCCGCGAGCCTGCGCCTTCTCCACGCTAGGCAGGGTGTGCGCATGGCCTACAGC
 GAAGCCGGAGACTATCTGGTAGCAATTGAGGAGAAAAACAACTATATTCCTGCGTGCTTACGTGAATT
 GGAGGAGTAAGAGGAGCGACAACCCCGTGTGTCATTGCAATGGTTGGCCACAATGTGGAGGCATCCTT
 CTGTGAAAGCTTTAGAGACCAGATGTCTATAATTGAGATGCCAATGTCTGAGGCCCTTTGTGCTTTTCG
 TGTTGCTCTGTAAGGAGATCTTCTTGTGGATGTACAATAAGTTAGTGTATTTACTTTGAAGTATG
 ATATCATTAAATGAGGAATCTCAATATTGAACCTTGAACGTTCAATTAATACACATAGATAATATCAC
 TCCTGTTGAAATCTTTTTGTGTGGATATGTTGCTGTCATGTCTGATTTAGAAGTCTTACTCCTAAAA
 CTGGAGTCAGACCTATACATGGAGAGAGTGTGACCACCACCCACAAGAAACCAGCAATCCATTGAAAG
 AGCGGAAAGGTGTCAGTAATGAACTTCACAACCTTGAAGTCAAGATTTTGTATCTGTCTAAAACCCAT
 GAACTCATTGGTAAAAATGTGAACAGTCTGGGATATCTGTTAAACTGGAGTCCACAGGATTAGAAGAT
 GAAAAAGTAAATATTTACGTGTTCCGCATCTATTGTATAGACGTTTTGCTCCAGATATTTGCTCCTATG
 TCTTGTCTGATAACATCAAGTTACATCCCTTCAGCTGTACCCATTACCAAAGTGGTTTTATCCTGA
 TGAAAAATGATTTATCGCCGAAAAAGAGATGCCAAATCTTCTGTTTCTTCTGTTACCTCATGTGGGC
 TATCTGTACATGGTTGTGAAGTCTGTTGAATTAATGTCAGTCTATTGGTATCCTGAGAAGTCTCAACAAG
 CCGTGCTCACACCACAGTCTTTCATGTCATCACAAAGCCAAAGCCTGCAGTGTTCACGGTCCGATGCAG
 TGCAGCGGTGGCACATGAGGAAGACCTATACATGGATACTACGCTAAAGGCTTGCCACCTGTCAAGTATG
 GACGTTTGTGCTTAAGGATACAGCTTTTCATAGGCTTGAAGCCATCTGTCACTTTAAAAACCACATTA
 TACTTCTGACGAAGGCAGAGCCTGAGGCCATTCCAGAGAGAAGAGAGTCAACCAAGAAACTTATTCTAG
 AAAAGATGCCAGTGTAGGAGCGGAACCCCTCACGTGGCTGAAGCGGCATGGAATCTGTATCTCGTGAAC
 ACCACGGCACCAGTGCAGCTGTACAAAGAAATGGTAGACTATAGTAACAGCTACAAGACCGTAAAAACCG
 AGAGCTGTCTCCACCTGCTCAGTGAAGCTCATCTGCTAGTGAAGCTGCCCTGATGGATGGCAGTCACT
 GGAGCCTGCAGAGAAAGCAGAATCCTGGAAGCTTTTAAAGAAAGCTGTGGACACCTGGAGACTGTTAC
 AGCAGGTTGGTGAAGCCTCGTAAGCGTTGTTACAGAGTTTGCATGCACATAGCAGGCTTTTTTACCTCT
 GGGAGTTGGTTCGTTTTCTCATTGTTTTCATAGGCATGCTATGTGCCCGTCCATATGTAGGTGTGTGGC
 AGGCTTAGAGGTACAGAGTGGATATGACTTACCCAGTGTCTTT

ACGCGTACGCGGCCGCTCGAG - GFP Tag - GTTTAA

Protein Sequence:

>MG221151 representing NM_001146324
 Red=Cloning site Green=Tags(s)

MVRLYNLHPFGSQVVPQWEPEQVCCGGSDALFVAAGCKVEAFVQGEELCRQRCFAFSTLGRVLRMAYS
 EAGDYLVAIEEKNTIFLRAVYNWRKSDNSRVCIRMGVHNVEASFCEFRDQMSIIEMPMSEAPLDFS
 CCPVKGDLLVGCTNKLVLFTLKYDIINEEFSILNFERSLIIHIDNITPVEISFCVGVVAVMSDLEVLLK
 LESDPIHGESVDHHPQETSNPLKEAEGVSNETSQLESEDFVICLKPMELIGEKEQSGISVKLESTGLED
 EKVKYLVRHLLYRRFAPDISSVYVLSDNIKLHSLQLLPIHQSGFHPDENDLSPKKEMPNFLCFFSLPHVG
 YLYMVVKSVELMSVYVWPEKSQQAVLTPQFLHVITSQSLQCFTVRCSSAAVAHEEDLYMDTTLKACPPVSM
 DVCALRIQLFIGNKAICHFNHIIILLTKAEPEAIPERRESPKLI SRKDASVRSRGTPHVAEAAWNLYLVN
 TTAPVQLYKEMVDYSNSYKTVKTESCLHLLSEHLLVRAALMDGSQLEPAEKAELLEAFKESCGHLGDCY
 SRLVPRKRRCYRVLHAHSRFLYLVWELVRFILCFIGMLCARSICRCVAGLEVQSGYDLPSVF

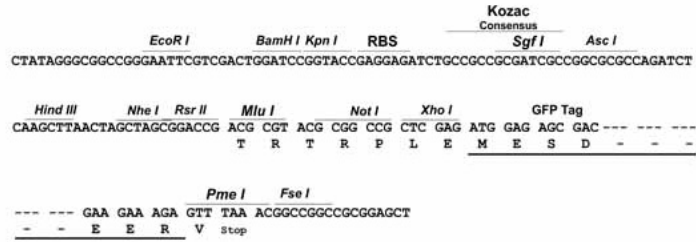
TRTRPLE - GFP Tag - V

Restriction Sites:

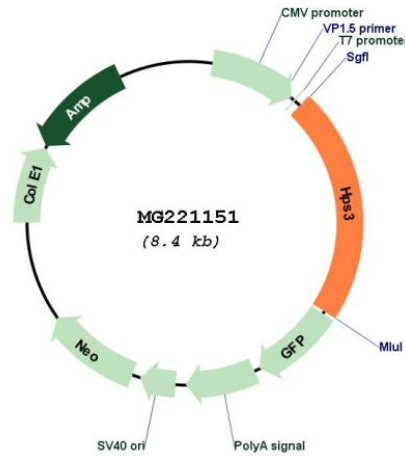
Sgfl-MluI

Cloning Scheme:

Cloning sites used for ORF Shutting:



Plasmid Map:



ACCN: NM_001146324
 ORF Size: 1863 bp

OTI Disclaimer:	The molecular sequence of this clone aligns with the gene accession number as a point of reference only. However, individual transcript sequences of the same gene can differ through naturally occurring variations (e.g. polymorphisms), each with its own valid existence. This clone is substantially in agreement with the reference, but a complete review of all prevailing variants is recommended prior to use. More info
OTI Annotation:	This clone was engineered to express the complete ORF with an expression tag. Expression varies depending on the nature of the gene.
Components:	The ORF clone is ion-exchange column purified and shipped in a 2D barcoded Matrix tube containing 10ug of transfection-ready, dried plasmid DNA (reconstitute with 100 ul of water).
Reconstitution Method:	<ol style="list-style-type: none">1. Centrifuge at 5,000xg for 5min.2. Carefully open the tube and add 100ul of sterile water to dissolve the DNA.3. Close the tube and incubate for 10 minutes at room temperature.4. Briefly vortex the tube and then do a quick spin (less than 5000xg) to concentrate the liquid at the bottom.5. Store the suspended plasmid at -20°C. The DNA is stable for at least one year from date of shipping when stored at -20°C.
RefSeq:	NM_001146324.1 , NP_001139796.1
RefSeq Size:	2335 bp
RefSeq ORF:	1866 bp
Locus ID:	12807
Cytogenetics:	3 6.12 cM
Gene Summary:	Involved in early stages of melanosome biogenesis and maturation.[UniProtKB/Swiss-Prot Function]