

Product datasheet for **MG221109**

Hps5 (NM_001005247) Mouse Tagged ORF Clone

Product data:

Product Type:	Expression Plasmids
Product Name:	Hps5 (NM_001005247) Mouse Tagged ORF Clone
Tag:	TurboGFP
Symbol:	Hps5
Synonyms:	Al646796; AL022647; C85120; haze; hz; maroon; mr; ru-2; ru2
Mammalian Cell Selection:	Neomycin
Vector:	pCMV6-AC-GFP (PS100010)
E. coli Selection:	Ampicillin (100 ug/mL)
ORF Nucleotide Sequence:	>MG221109 representing NM_001005247 Red=Cloning site Blue=ORF Green=Tags(s)

TTTTGTAATACGACTCACTATAGGGCGGCCGGAATTCGTCGACTGGATCCGGTACCGAGGAGATCTGCC
GCC**CGATCGCC**

ATGACTTTTGTGCCAGTGATACCAGAAGCCTACAGCCATGTTCTTGCAGAGTTTGTGATCCTTGGATCCGT
TACTCACAGCCCTGAGGCTGGACTCCAGTCGTCTGAGGTGTACCAGCATAGCTGTGTCTCGGAAATGGTT
GGCGTTAGGCAGCACAGGAGGAGGACTCAATCTCATTAGAAAGATGGCTGGAAGCAAAGGCTGTTTCTC
TCTCACCGGGAAGGGCAATCTCTCAGATTGCCTGCTGCTCATGATGATGATTATGTTGCTGTAGCTA
CCAGTCAAGGTCTTGTAGTTGTTGGGAATTAATCAAGAGCGTCGTGGGAAGCCAGAACGAATTCATGT
GTCCTCAGAACACAAAGGCCGAAAAGTTACTGCCCTCTGTTGGGACACGGCTGTTCTGAGAGTCTTTGTC
GGTGACCATGTGGCAAAGTATCTGCCATCAAACACTTTGAAAACAAGCAAAGCAGCTGCTGCCCT
TTGTGATGTTTCTGTGCAGACAGTACTAACAGTGGACTCGTGTGTCTGTCAGTTGGATTACTTGGATGG
AAGATTACTTGTGCTTCACTGACTCGATCCTTCTTGTGTGACACCGAGAGGGAAAAGTTTTGGAAAATC
GGAAATAAGGAAAGACATGGAGAATATGGGGCTTGTTCCTCCCGGGCGGTGTGCTGGGGGCCAGCAGC
CTGTGATCTACTGCGCCCGCCAGGCTCCCGGATGTGGGAAGTGAACCTTTCAGCGGGAAGTGCTCAGTAC
ACACCAGTTCAAGAAGCTCCTGTCAATGCCACCCTCCCTGTGATCACTGCAAGATCAGAGCCTCAGTAT
GATCACACAGTTGGATCCTCCAGTCTTTGGCATTCCCAAACCTTTGATCCTTAGTGAACACTGTGTGC
TGACTTGGACAGAAAAGGAATTTATATTTTCCTCAGAATGTTCAAGTCTTCTTTGGAGTGAAGT
CAAGGATATTCAGGATGTAGCTGTCTACAAGAATGAATTGTTCTGTTTACACTTTAATGAAAAATCTCA
CATCTTTCCCTGTTGTCTGTGGAGCGCTGTGTAGAACGCCTGTTAAGGAGAGGCCTGTGGGACCTGGCTG
CTCGCACATGCTGTCTTCCAAAATTCTATTATTACCAGCAGAGCAAGAAAAACATTGACTGCAGATAA
GTTGGAGCATTTGAAGTCTCAGCTGGACCTTACAGCCTGCAGTGAACATAATTTCTCAGCTGGACGACTTG
ATCTTAAGGTTTCAGCCTTTGGAGTCGGCTGCAGCAGCAGAAGAAGCTCCATCTCATCGCATGAAAGTT
TTAGCATCTTGGACTCTGGTATTTATCGTATCATCAGTAGTAGAAGAGGCGAGTCCGACGAAGATTC
TTGTTCCCTTACAGCCAGACCTTCTCAGAAGATGAAAGGCTTAAAGAATTTGCCTCACACCAGGAAGAG



[View online »](#)

GAGCAGCCAGAGCAGGGCTGTGGTGCCAATAGGAATGAAGAGAGTGCTTCCCACAGTCCAGTGATGTCTG
 AGGTAGATAAGAGTGAAGCTTTTCTGCCCTTCAGCATTGCACTGCCATTCGTTCTCCATCTCCCCTCGT
 GTCTCTTCAGGCTGTTAAAGACAGTGTTTCTAGCTTTGTGCGTAAAACACTACTGAGAAGATTGGCACCCCTT
 CACGGAAGCCCCGAGCTGAAAGAGCCTTTTGAATCCAAGGATGCTGACCGAGCACATGAAGAGGAAGTGA
 GTGCAGTACCTGCCCTCTGGAGGAGGACACTGAGGAGAAAGAAATTCATCAACCTCCTAAAGAAGACAG
 GCTTCAAGAACTCACAGCAGCGACAGCAGAAGCAATGACCAAGTATTGGACCCTCTGGTCTGTTTGAG
 CCCAAGGTGCTAAGAATGGTTTTACTTGAGTGGCTTTCACAGTTAGAGAAAACATTTGCCATGAAAGACT
 TCCCCGGCATTTCCAATACCAGCAGTCCAACCGTGAAATCAAACCTGGGTGCACACCTCCTCGGTGAGAC
 AGAAAAGAGAGTATTAGATGAAGAGAGTGGAGAAGGAAGGGTCTCTTATGCTACTGAAGAAGCTGGA
 GGTGAGATAACCTGTGACCCTGTAAAGCAACCTCAGTGAGCCCTCGGCTGACCGTTTTGAGTATGCTCTC
 CATACGCCATCACAACAGCCTTCAGAGGGACCTGGCGGAATTGACAACGTTGTGCTTGGAACTGAATGT
 GTTGACTTCAGCAATGAAAAGCGTAGGTGGGCATGTGGACCGGGCTTACAGCAGCTCTCTCCAGAAATC
 CTGGCTTGTGCTTCTAAAGAAGTACTTTTTCTTCTGACTTGAAAAGAGCAAAGGAGAGTATCAAGC
 TCACTTACGACAGCCCTTGCCTTTGGGACTTTTGTGCAAGGACTAAAAGAAATGGCAAGATCTAATCC
 TGCTTACAGGAGCTGGAAGAAGGAGACCTGCCACGGGGTTACAGTTACTGGATGGCTCGTCCCTTCT
 GATAGTCCCTTGTGATTGCATTTGCCACCCGGTTGATGATAGATTTGGGGAGTCAGCCCTTCGAGCTT
 GCATCAAGTTTTATCCGTCCATTTGCCCTCCGACATCGCACAGCTTTGCCGTATCATCTGCTCAGTT
 CTTGGCCTATCTAGACAGTCTGGTGAAGTCCAGGCCGGAAGACCAGTGGCCATCCTTCTTGAGTTCCTT
 CTACAACCAGAGTCTTTAAGACTTGAATGGCTGCTTTTGGCAGTGTCCCATGATGCTCCACCAAGCACA
 GTACAGTGGATGATGAAGGGCACCCAGGCCCATTCACACTTGCTTCTTGGGGTTATAGTCAGCTGAT
 TCTTCTTCTTATTAACCTCCTGCAGACTTTACAACCAAGAGAAAATGACTGACATCTGTAGGTCTTAC
 GGTTCCTGGCCTGGATATCTTACCCTCTGTCTGGAGCTGGAGAGGAGGAGGGAGGCCCTTACCAACATTG
 TGTATCTGAATGACATAAGCCTGATGGAAGGGGACAATGGTGGATCCCTGAGACCTTGGAGGAATGGAA
 GCTTCTCCTACATCTACTACAGACCAAGAGCACAAAGGCCAGCTCCCAGGAGTCACTAAACGGGAGCCTC
 AGTGATGGCCAGCCCTATCAATGTGGAGAATGTGGCCCTCCTGTTAGCTAAGGCCATGGGCCAGATC
 GGGCCTGGTCACTGCTACAGGAGTGTGGTCTGGCTCTTGAAGTGTGAGAAAAGTTACCAGAACCTGTGA
 TATCCTGAGGATTGCTGAGAGAAGGCAGAGAGCGCTGATACAAGGCATGCTTGAGAAGTGTGACCCTTC
 CTCTGGTCGCAGCAGGCC

ACGCGTACGCGGCCGCTCGAG - GFP Tag - GTTTAA

Protein Sequence:

>MG221109 representing NM_001005247
 Red=Cloning site Green=Tags(s)

MTFVFPVIPEAYSHVLAEFESLDPLLALRLDSSRLRCTSIIVSRKWLALGSTGGGLNLIQKDGWKQRLFL
 SHREGAISQIACCSHDDDYVAVATSQGLVVVWELNQERRGKPERIHVSSEHKGRKVTALCWDTAVLRVVF
 GDHVGVKVAIKLNTLKQAKAAAAFVMPVQTVLTVDSCVVQLDYLDRLLVSSLTRSFCDTEREFWKI
 GNKERHGEYGACFFPGRAGGQPVIIYCARPGSRMWEVNFDFGEVLSTHQFKLLSMPPLPVITARSEPQY
 DHTVGSQSLAFPKLLHLSEHCVLTWTEKGIYIFIPQNVQVLLWSEVKDIQDVAVYKNELFCLHFNKGIS
 HLLSLSVERCVERLLRRGLWDLAARTCCLFQNSIITSRARKTLTADKLEHLKSQDLDTACSELISQLDDL
 ILRFEPLSACSSRRSSISSHESFISILDSGIYRIISSRRGSQSDSDCSLHSQTFSEDERLKEFASHQEE
 EQPEQCGGANRNEESASHSPVMSEVDKSEAFLPFSIALPFRSPSPLVSLQAVKDSVSSFVRKTEKIGTL
 HGSPLEKPEFESKDADRAHEEEVSAVTCPLEEDTEEKEIHQPPKEDRLQELTAATAEAMTKLLDPLVFE
 PKVLRMVLLEWLSQLEKTFAMKDFPGISNTSSPTVKSNLGAHLLGETEKRVLDEESGEGRRVSLVTEEAG
 GQITCDPVSNLSEPSADRFRCVSPYAITNSLQRDLAELTTLCELENLVTSAMESVGGHVDRASQQLSPEI
 LACRFLKYYFLLDLKRAKESIKLYDSPCVWDTFVEGLKEMARSNPAYTELEEGDLPTGLQLLDGSVPS
 DSPLLIAFATRLYDRFGESALRACIKFYPSISPDIAQLCRHHPAQFLAYLDSLKSRPEDQWPSFLEFL
 LQPESLRLEWLLAVSHDAPPSTSTVDDEGHPRPHSHLLSWGYSQLILLIKLPADFTTKEKMTDICRSY
 GFWPGYLTLCELEERRREAFNIVYLNDISLMEGDNGWIPETLEEKLLHLLQTKSTRPAPQESLNGSL
 SDGPAPINVENVALLLAKAMGPDRAWSLQECGLALELSEKFRTRCDILRIAERRQRALIQGMLEKCDRF
 LWSQQA

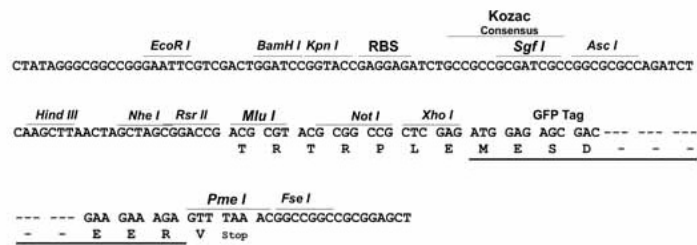
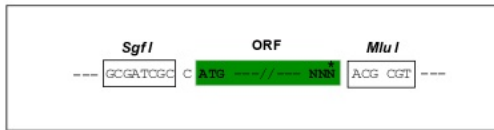
TRTRPLE - GFP Tag - V

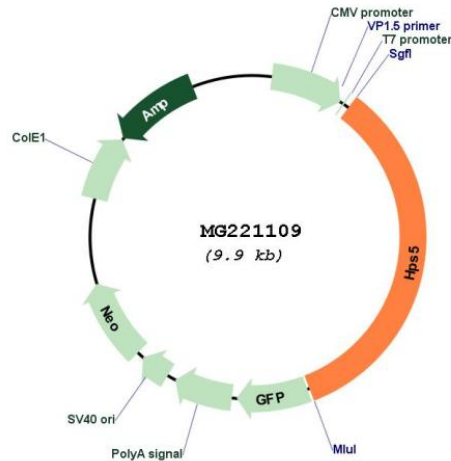
Restriction Sites:

SgfI-MluI

Cloning Scheme:

Cloning sites used for ORF Shuttling:



Plasmid Map:


ACCN: NM_001005247

ORF Size: 3378 bp

OTI Disclaimer: Due to the inherent nature of this plasmid, standard methods to replicate additional amounts of DNA in E. coli are highly likely to result in mutations and/or rearrangements. Therefore, OriGene does not guarantee the capability to replicate this plasmid DNA. Additional amounts of DNA can be purchased from OriGene with batch-specific, full-sequence verification at a reduced cost. Please contact our customer care team at custsupport@origene.com or by calling 301.340.3188 option 3 for pricing and delivery.

The molecular sequence of this clone aligns with the gene accession number as a point of reference only. However, individual transcript sequences of the same gene can differ through naturally occurring variations (e.g. polymorphisms), each with its own valid existence. This clone is substantially in agreement with the reference, but a complete review of all prevailing variants is recommended prior to use. [More info](#)

OTI Annotation: This clone was engineered to express the complete ORF with an expression tag. Expression varies depending on the nature of the gene.

Components: The ORF clone is ion-exchange column purified and shipped in a 2D barcoded Matrix tube containing 10ug of transfection-ready, dried plasmid DNA (reconstitute with 100 ul of water).

- Reconstitution Method:**
1. Centrifuge at 5,000xg for 5min.
 2. Carefully open the tube and add 100ul of sterile water to dissolve the DNA.
 3. Close the tube and incubate for 10 minutes at room temperature.
 4. Briefly vortex the tube and then do a quick spin (less than 5000xg) to concentrate the liquid at the bottom.
 5. Store the suspended plasmid at -20°C. The DNA is stable for at least one year from date of shipping when stored at -20°C.

RefSeq: [NM_001005247.2](#), [NP_001005247.2](#)

RefSeq Size: 4828 bp

RefSeq ORF: 3381 bp

Locus ID: 246694

UniProt ID: [P59438](#)

Cytogenetics: 7 30.56 cM

Gene Summary: May regulate the synthesis and function of lysosomes and of highly specialized organelles, such as melanosomes and platelet dense granules. Regulates intracellular vesicular trafficking in fibroblasts. May be involved in the regulation of general functions of integrins. [UniProtKB/Swiss-Prot Function]