

Product datasheet for **MG221066**

Tacc2 (NM_021314) Mouse Tagged ORF Clone

Product data:

Product Type:	Expression Plasmids
Product Name:	Tacc2 (NM_021314) Mouse Tagged ORF Clone
Tag:	TurboGFP
Symbol:	Tacc2
Synonyms:	mKIAA4180
Mammalian Cell Selection:	Neomycin
Vector:	pCMV6-AC-GFP (PS100010)
E. coli Selection:	Ampicillin (100 ug/mL)
ORF Nucleotide Sequence:	>MG221066 representing NM_021314 Red=Cloning site Blue=ORF Green=Tags(s)

TTTTGTAATACGACTCACTATAGGGCGGCCGGAATTCGTCGACTGGATCCGGTACCGAGGAGATCTGCC
GCC**CGATCGCC**

ATGGGAGGGTCGCAGTCCCTGCAGCCAGCCCCAGCCAGTGACCTGAACCTGGAGGTTTCTGAGGCCATGA
GTTCCGACTCTGAGGAAGCCTTTGAGACCCCCGAGTCAACGACCCTGTCAAAGCTCCACCAGCCCCCTCC
CCCTCCACCCCTGAAGTCACCCAGAGCCTGAGGTTCATCGATCCACCAGCCCCAGAAGAACCAGGATGC
ATTTCTGAGCCACCGGTTGTGGTCCCAGTGGCCCTCGCAGCAGCGAGTCCGTGGAAGGAAGCCCTTTCC
GTCCTTCCACTCCTCCTCGGCGGTGTTTCGATGAAGACAAGCCGATAGCCAGCAGCGGGACTTACAACCT
AGACTTCGACAGCATCGAGCTGGTGGATAACTTCCAGAGCTTGGAGCCGTGCTCTGCCGACTCTAAGGGT
CAGGAGTGAAGGTGAGCACGCGGAGGAAATCCACCGAGTCCGTGCCACCTCCAAGTCCACGCTGTCCC
GTTTCGCTTAGCCTACAAGCCAGTGACTTTGACGGTGTCTTGGCCCCGAGCCCTGAAGCTGGGACCCCT
TACCACAGATGCATGTGGCACAGGATCCAACAGTGCTTCCAGCACCCCTTAAGCGAACTAAAAAACCGG
CCACCTTCTTGAAGAAAGCAAGCCACCAAGAAACCCACAGAAACCCCCCAGTGAAGGAGACCCAAAC
AGGAACCAGGTGAAGAGAGTCCAGTCCCCAGTGAGGAACACTTAGCACCAGAGACAAAGACGGAGTCGGC
CACACCTGAGGGCGCTGGTTGCACCTTGTGACAGGATACACCCCTGGAGTCCCTGTCTCCACAGCC
ACCTGTCTCTGACTTTGGAGAGTGCAGAAGACGTTAGCCCCCTGGTTTCTGGAGGTGGCAGAGTGCAGA
ACTCACCCCAAGTTGGGAGGAAATCAGTGCCTCTTACCACAGCCTCTGAGGCGGTGGAGGTGACCCCTGTC
GGACAGTGGGGGCAAGAGGACTTGCTGCCAAGGGGTTGTCAGTGAGGCTGGAGTTTACTATTCTGAG
GACAAGGGAAGTTGGGAGAGTCAAGCAGGAAAACGCCCTCCACCAAAAAGATAGGCAAGAAGCCAGTTG
CCAAAAATGCCCTAAGGAGGCCAAAGATGAAAAAGACCCCGAGAACTTGACAACACTCCTGCCTCACC
TCCAAGTCCCCTACTGAACCCAGTGACACCCCTATTGCTAAAGGTACCTACACCTTTGATATAGACAAG
TGGGATGACCCCAATTTAAACCTTTTTCTCCACCTCAAAAATGCAAGAGTCTCCCAAAGTGTCCCAAC
AATCGTACAACCTTGGACCTGACGCTGTGAAGAGTCCCTTGACCCCTTAAGGCATCCTTAAGACCC
CAGCTCACCTTAAAGTCCCAGCCTCTTTGAGATCCAGCCAGCACCAGGAAGCGGATGGGATGGG



[View online >](#)

```

TTGAATAAACCTGCCAAGAAGAAGAAGACTCCACTAAAGACGATGGTTGAAGATGTGATGTCTGTGTGTT
CTCTGTTTGACACGTTTAGGGTGAAGAAGTCTCCAAGCGGTCTCCTCTGTCTGACCCGCTTCTCAGGA
CCCCACTCCAGCTGCCACGCCGAAGCACCCCTCAGCCATCTCTACAGTGGTCCACGCCACAGATGAGGAG
AAGCTGGCAGTCACTAGCCAGAAGTGGACGTGTATGACGGTGGACTTGGATGCTGACAAACAGGACTTCC
CTCAGCCCTCGGACCTGTCTAACTTTGTAATGAGACCAAATCAATTCACCCTCAGAGGAGCTGGACTA
CAGAACTCCTATGAAATTGAATACATGGAAGCTTGGCTCCTCCTTACCTCAGGACGATGACACTCCG
AAGAAGCAGGCCCTGTACCTTATGTTTGACACTCCTCAGGAGACCCCGTCAAGTCTCCTCCAGTCCGGA
TGTGAGATTCCCAACTCCATGTTTCAGGGTCGAGTTTTGAGGACACCCGAAGCCCTTGTGAATGCAGCAAC
AAAGCTCCAGCATCCAGTCGCAAGAGGTCTGCCCTCCAGTCAGGAGCCTCTCTTGCAAGTGCCTGAGAAG
CCCTCCAGAAGGAGCTGGAGGCCATGGCCTTGGGCACCCAGCAGAAGCAATTGAAATCACAGTCCCG
AGGGTGCCTTTGCTTCTGCAGATACCCTCCTCAGCAGGCTGGCCATCCCGCCTCTCTGTGGTGCCT
TGGCTATCTGGAGCCTGACTTAGCAGAAAAGAACCCCCAGTATTTGCCAGAACTTCAGGAGGAGTTA
GAGTTTGTGTCATGCGGATAGAAGCCCTGAAGCTGGCCAGGCAGATCGCCCTGGCTTCCCGCAGCCGCC
AGGACACCAAGAGGGAAGCTGCTACCCACCAGATGTCTCCATCTCCAAAAGTGCCTTGTACTCCCGCAT
CGGGTCCACCGAGGTGGAGAAACCCCCAGGCCTTCTGTTCCAGCAGCCAGACCTGGACTCTGCACCTCAG
GTTGCCAGAGCAGAGGTCATCGCAAGGAGAGAGAAGTCTCAGAGTGGAGGGATAAATATGAAGAAAGCC
GACGGGAAGTGGTGGAAATGAGGAAAATTTGGCCGAATATGAGAAGACCATTGCACAGATGATCGAGGA
CGAACAGAGAGAAAAATCCATCTCCACCAAAGTGTACAGCAGCTGGTCTTGAGAAGGAGCAAGCCCTG
GCTGACCTGAACTCTGTGAAAAGTCTCTGGCTGACCTTTCAGGAGATACGAAAAGATGAAGGAGGTCC
TGGAAAGTTTTCGAAAAGATGAAGAGGTGTTGAAGAAATGTGCGCAGGAGTACCTATCCCGAGTGAAGAA
AGAGGAACAGAGGTACCAGGCCCTGAAGGTGCACGCCAAGAGAAACTGGACAGAGCCAAATGCAGAGATT
GCCCAGGTTCCGGCAAGGCCAGCAAGAGCAAGCAGCCTACCAGGCTAGCCTGCCGAAGGAGCAGCTTC
GAGTGGATGCTCTGAAAAGAACGCTGGAGCAGAAGAATAAAGAGATAGAAGAAGTACCAAGATTTGTGA
CGAGCTGATCGCAAGATGGGAAAAAGC
    
```

ACGCGTACGCGGCCGCTCGAG - GFP Tag - GTTTAA

Protein Sequence:

>MG221066 representing NM_021314
 Red=Cloning site Green=Tags(s)

```

MGGSQSLQPAPASDLNLEVSEAMSSDSEEFETPESTTPVKAPPAPPPPPPEVTEPEVEIDPPAPEEPGC
ISEPPVVVPDGRSSESVESPFRRSHSSAVFDEDKPIASSGTYNLDLDFDSIELVDFNSLEPCSDSKG
QECKVSTRRKSTESVPPSKSTLSRSLSLQASDFDASCPGSPEAGLTTDACGTGSNSASSTLKRKTR
PPSLKKKQATKKPTETPPVKETQQEPGEEESPVPSEEHLAPETKTESATPEGAGCTLSDDTPLSPA
VPTATCPLTLESAEDVSPLVSGGGRVQNSPPVGRKSVPLTTASEAVEVTLSDSGGQEDLPAKGLSV
RLEFDYSEDKGSWESQENAPPTKKIGKKPVAKMPLRRPKMKKTPEKLDNTPASPPRSPTEPSDT
PIAKGTYTFDIDKWDDPNFNPFSSSKMQESPQLSQSYNFDPDACEESLDPFKASSKTPSSPSKSP
ASFEIPASTTEADGDGLNKPAKKKKTPLKTMVEDVMSVCSLFDTRVKKSPKRSPLSDPPSQDPT
PAATPEAPSAISTVVHATDEEKLAVTSQKWTCTVLDLADKQDFPQPSDLSNFVNETKFNPSSEEL
DYRNSYEIEYMEKLGSSLPQDDPTPKKQALYLMFDTPQESPVKSPVVRMSDPTPCSGSSFEDTEAL
VNAATKLQHPVARGLPSSQEPLLVPEKPSQKELEAMALGTPAEAEIETAPEGAFASADTLLSRLA
HPASLGCALGYLEPDLAEKNPPVFAQKLQEELEFVAVMIEALKLARQIALASRSRQDTKREA
AHPDVSISKALYSRIGSTEVKPPGLLFQQPDLSALQVARAEVIAKEREVSEWRDKYEESRREV
VEMRKIVAEYEKTI AQMIEDEQREKSIHQTVQQLVLEKEQALADLNSVEKSLADLFRRYEK
MKEVLEGFKNEEVLKKAQEQYLSRVKKEEQRYQALKVHAEKLDRAAEIAQVRGKAQEQEAAY
QASLRKEQLRVDALERTLEQKNKEIEELTKICDELIAKMGKS
    
```

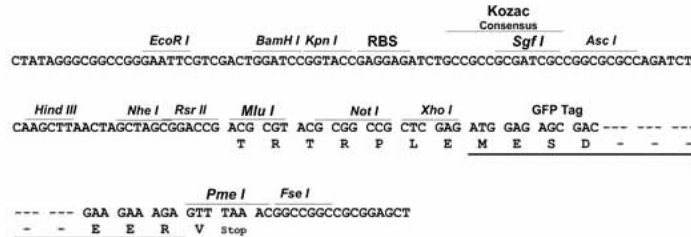
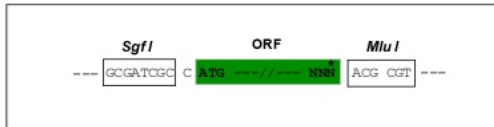
TRTRPLE - GFP Tag - V

Restriction Sites:

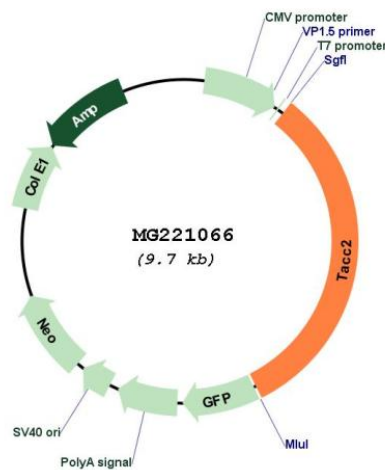
Sgfl-Mlul

Cloning Scheme:

Cloning sites used for ORF Shutting:



Plasmid Map:



ACCN: NM_021314

ORF Size: 3108 bp

OTI Disclaimer: The molecular sequence of this clone aligns with the gene accession number as a point of reference only. However, individual transcript sequences of the same gene can differ through naturally occurring variations (e.g. polymorphisms), each with its own valid existence. This clone is substantially in agreement with the reference, but a complete review of all prevailing variants is recommended prior to use. [More info](#)

OTI Annotation:	This clone was engineered to express the complete ORF with an expression tag. Expression varies depending on the nature of the gene.
Components:	The ORF clone is ion-exchange column purified and shipped in a 2D barcoded Matrix tube containing 10ug of transfection-ready, dried plasmid DNA (reconstitute with 100 ul of water).
Reconstitution Method:	<ol style="list-style-type: none">1. Centrifuge at 5,000xg for 5min.2. Carefully open the tube and add 100ul of sterile water to dissolve the DNA.3. Close the tube and incubate for 10 minutes at room temperature.4. Briefly vortex the tube and then do a quick spin (less than 5000xg) to concentrate the liquid at the bottom.5. Store the suspended plasmid at -20°C. The DNA is stable for at least one year from date of shipping when stored at -20°C.
RefSeq:	NM_021314.5
RefSeq Size:	3940 bp
RefSeq ORF:	3111 bp
Locus ID:	57752
UniProt ID:	Q9JJG0
Cytogenetics:	7 F3
Gene Summary:	This gene encodes a member of the transforming, acidic coiled-coil (TACC) family of proteins. Members of this family are centrosomal proteins that interact with microtubules and tubulin. TACC proteins are thought to be involved in centrosome/mitotic spindle dynamics and gene regulation. Alternative splicing of this gene results in multiple transcript variants encoding different isoforms. [provided by RefSeq, Jul 2008]