

Product datasheet for **MG221059**

Lifr (NM_013584) Mouse Tagged ORF Clone

Product data:

Product Type:	Expression Plasmids
Product Name:	Lifr (NM_013584) Mouse Tagged ORF Clone
Tag:	TurboGFP
Symbol:	Lifr
Synonyms:	A230075M04Rik; AW061234; LIF
Mammalian Cell Selection:	Neomycin
Vector:	pCMV6-AC-GFP (PS100010)
E. coli Selection:	Ampicillin (100 ug/mL)
ORF Nucleotide Sequence:	>MG221059 representing NM_013584 Red=Cloning site Blue=ORF Green=Tags(s)

TTTTGTAATACGACTCACTATAGGGCGGCCGGAATTCGTCGACTGGATCCGGTACCGAGGAGATCTGCC
GCC**CGATCGCC**

ATGGCAGCTTACTCATGGTGGAGACAGCCATCGTGGATGGTAGACAATAAAAGATCGAGGATGACTCCAA
ACCTGCCATGGCTCCTGTCAGCTCTGACCCTCCTGCATCTGACGATGCATGCAAACGGTCTGAAGAGAGG
GGTACAAGACTTGAAATGCACAACCAACAACATGCGAGTGTGGGACTGCACGTGGCCAGCTCCCCTCGGG
GTCAGCCCTGGAAGTGTAAAGATATTTGCATTAAGACAGGTTCCATTCTGTACCCATTAGAGACAA
CAAACGTTAAAAATCCAGCTCTTTCACCTGGTGATCACGAAGTACAATAAATTATCTAAATGGCTTTCA
GAGTAAATTCAGTGAATGAAAAAGATGTCTCTTAATTCAGAGACTCCCAGATCCTGGATTTGTCT
GCTGACTTCTTCACTCCTTACTACTGAAAGTGAACGACAGAGGGTCTGCTCTGCCTCACCCCTCCA
ATGCCACCTGGGAGATTAAGTTCTACAGAATCCAAGGACGGAACAGTAGCACTCGTGTACTCAACAC
AATGCTGAGTGGTAAAGATACCGTTTCAGCACTGGAAGTGGACCTCAGACCTGCCCTTGCAATGTGCCACT
CACTCGGTGAGCATTGATGGCATTGACTCGCTCATTTCTCCGGTTACAAGAGTGGAGTACTGGA
GCCCGTGAAGAATCTCCTGGATTCGTAATACAGAGACTAATGTTTTCTCAAGACAAAGTGGTGTCT
CGCAGGCTCAAACATGACAATTTGTTGTATGAGTCCAACGAAAGTGTCTTCAGGACAGATCGGCAATACC
CTTCGTCCTCATCCATCTGTACGGGCAACCGTTGCGATCCATATCCTGAACATCCCCTTTCTGAAA
ACAGTGGCACAAACATCATTTTCATCACAGACGACGATGTGTACGGAACGGTGGTCTTTGCAGGCTATCC
TCCCGATGTTCTCAGAAGCTGAGCTGTGAGACACATGACTTAAAAGAGATTATATGTAGCTGGAATCCA
GGAAGGATAACTGGACTGGTGGGCCACGAAATACAGAATACACCCTGTTTGAAGCATTTCAGGAAAAAT
CGGCAGTATTTACAGGATTGAAGGACTTACAACGAGACCTACCGTTAGGCGTGCAAATGCATCCCGG
CCAAGAAATCCATAACTCACCCGACTGGTCCGAATCCACTGGGCGAGGCACAGTCAGCAGTGGTCATC
AATGTGACTGAGAGATTGCTCCTCATGATCCGACTTCGTTGAAAGTGAAGGACATCAATTCAACAGTTG
TTACATTTCTTGGTATTTACCAGGAAATTTACAAGATTAATCTTTTATGTCAAATTTGAAATTTGTA
AGCTAATTCGAAGAAAGAGTGAAGGATGCCACAATCAGAGGAGCCGAGGATTCAACTTACCATGTTGCT



[View online >](#)

GTAGACAAATTAATCCATACACTGCATACACTTCCGGGTTTCGTTGTTCTTCCAAGACTTCTGGAAGT
 GGAGCAGGTGGAGTGATGAGAAGCGACATCTAACCACAGAAGCCACTCCTTCAAAGGGACCAGACTTGG
 GAGAGAGTGGAGTTCTGATGGAAAAATCTAATCGTCTACTGGAAGCCTTACCTATTAATGAAGCTAAT
 GGAAAAATACTTTCCTACAATGTTTCGTGTTTCATTGAACGAGGAGACACAGTCAGTTTTGGAGATCTTCG
 ATCCTCAACACAGAGCAGAGATACAGCTTAGTAAAAATGACTACATCATCAGTGTGGTGGCAAGAAATTC
 TGCTGGCTCATCACCACCTTCGAAAAATAGCTAGTATGGAATCCCAAATGACGACATCACAGTAGAGCAA
 GCGGTGGGGCTAGGAAACAGGATCTTCTCACCTGGCGTCACGACCCCAACATGACTTGTACTACGTAA
 TTAATGGTGCAACTCATCTCGGTCTGAGCCTGCCTCCTGGACTGGAGAAAGGTTCTTCAAACAGCAC
 GGAGACTGTCATAGAGTCTGATCAGTTTTAGCCAGGAGTAAGATACAACCTTTTACCTCTATGGGTGCACT
 AACCCAGGATACCAACTGTTACGTTCCATAAATGGATACGTAGAAGAAGTGGCTCCCATTGTCGCGCCAA
 ATTTACCCTGGAAGATACGTCGGCAGACTCGATATTAGTGAATGGGACGACATCCCCGTGGAAGAGCT
 CCGAGGCTTCTAAGAGGATTTATTTTACTTTCAGAAAGGAGAGAGATACGCCAAGACGAGGAGC
 TTGGAGCCACATCATTCTGACATCAAGCTAAAGAACATCACTGACATATCCAGAAGACTGAGGATTG
 CTGACCTCAGGGTAAAACAGTTACCATCTGGTCTGCGAGCCTATACACATGGTGGTCTGGGCCCAGA
 GAAGAGCATGTTTGGTGGTACCAAGGAAACTCTGTGGGATTGATTATTGCCATCCTCATCCAGTGGCT
 GTGGCTGTATTGTTGGGTGGTAACGAGCATCCTTTGCTATCGGAAGCGAGAATGGATTAAAGAAACAT
 TCTACCCAGATATTTCCCAATCCAGAAAAGTGAAGGCGCTACAGTTTCAGAAGAGCGTCTGCGAGGGAAG
 CAATGCTCTTAAGACATTGGAATGAACCCCTGTACCCGAACAACGTTGAAGTCTGGAATCTCGGTGCG
 ATAGTCCCTAAAAAGAGATACAGAAATAATTTCCCAAGTTCGTCGAGCGTCTGGGGAAAGATCTGAGG
 TGGACCTGAGAACCATGTGGTCTGTCTTACTGCCACCCATCATCGAGGAGGAAATAACGAACCCCGC
 GGCCGATGAAGTGGGAGGGGCTCCAGGTCGTGTACATCGATGTGCAGTCCATGTATCAGCCGCAAGCC
 AAAGCAGAGGAAGAGCAGGACGTGGATCCTGTGGTGGTGGCAGGCTATAAGCCACAGATCGCCCTCCCA
 TCAGCCCGCTGTGGAAGACACAGCAGCAGAAGATGAAGAGGGTAAGACCAGGTTACAGACCTCAGGC
 CAATGTAAACACTTGAATTTGGTCTCTCCAGATTCCCGAGGTCACAGACAGCAACAACGAAGTTGTC
 TCTTTTGAAGTCCGTGCTCCATCAATTCCAGGCAATTCTTGATTCTCTAAAGACGAAGACTCTCCTA
 AATCTAATGGAGGAGGTGGTCTTTACAACTTCTTCCAGAACAACCAATGAC

ACGCGTACGCGGCCGCTCGAG – GFP Tag – GTTTAA

Protein Sequence:

>MG221059 representing NM_013584
 Red=Cloning site Green=Tags(s)

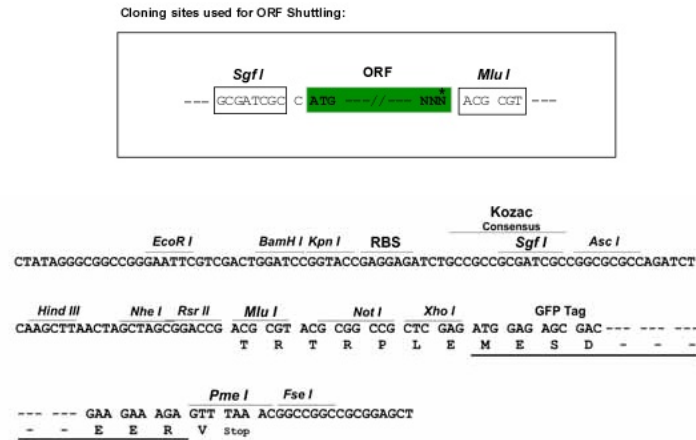
MAAYSWWRQPSWMVDNKRSMTPNLPWLLSAL TLLHLTMHANGLRGVQDLKCTTNMNRVWDCTWPAPLG
 VSPGTVKIDICIKDRFHSCHPLETTNVKIPALSPGDHEVTINYLNFGQSKFTLNEKDVSLIPETPEILDLS
 ADFFTSSLLKWNDRGSALPHPSNATWEIKVLQNPRTPEVALVLLNTMLSGKDTVQHWNTSDLP LQC
 HVSIRWHIDSPHFSGYKEWSDWSPLKNI SWIRNTE TNVFPQDKVVLAGSNMTICCMSPTKVL SGQIGNT
 LRPLIHLYGQTVAIHILNIPVSENSGTNIIFITDDDVYGT VVFA GYPPDVPQKLS CETHDLKEIICSWNP
 GRITGLVGRNTEYTLFESISGKSAVFHRIEGLTNETYRLGVQMHPGQE IHNFTLTGRNPLGQAQSAVVI
 NVTERVAPHDPTSLKVKDINSTVVTFSWYLPGNFTKINLLCQIEICKANSKKEVRNATIRGAEDSTYHVA
 YDKLNPHYTAYTFRVRCSSKTFWKWSRWSDEKRHLTTEATPSKGPDTWREWS SDGKNLIVYWKPLPINEAN
 GKILSYNVSCSLNEETQSVLEIFDPQHRAEIQLSKNDYIISVVARNSAGSSPPSKIASMEIPNDDITVEQ
 AVGLGNRIFL TWRHDPNMTCDYVIKWCNSSRSEPCLLDWRKVPSNSTETVIESDQFQPGVRYNFYLYGCT
 NQGYQLLRSIIGYVEELAPIVAPNFTVEDTSADSILVKWDDIPVEELRGFLRGYLYFYFQKGERDTPKTRS
 LEPHHSIDIKLKNITDISQKTLRIADLQGKTSYHLVLRAYTHGGLGPEKSMFVVTKENS VGLIIAILIPVA
 VAVIVGVVTSILCYRKREWIKETFYPDIPNPENCKALQFQKSVCEGSNALKTLEMNPTPNNVEVLESRS
 IVPKIEDTEIISPVAERPGERSEVDPENHVVVS YCPPIIEEEITNPAADEVGGASQVVYIDVQSMYQQA
 KAEEEEQDVPVVVAGYKPMRLPI SPAVEDTAAEDEEGKTAGYRPOANVNTWNLVSPDSPRSTDSNNEVV
 SFGSPCSINSRQFLIPPKDEDSPKSNGGWSFTNFFQNKPN

TRTRPLE – GFP Tag – V

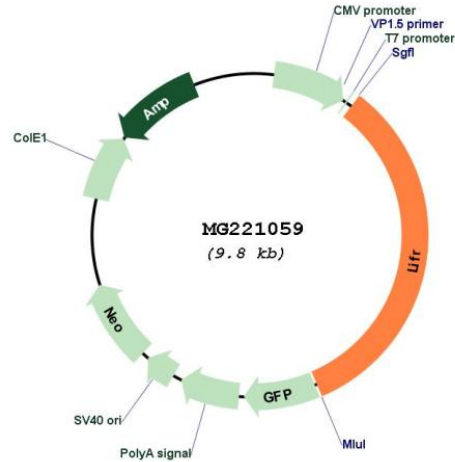
Restriction Sites:

Sgfl-Mlul

Cloning Scheme:



Plasmid Map:



ACCN: NM_013584

ORF Size: 3276 bp

OTI Disclaimer: The molecular sequence of this clone aligns with the gene accession number as a point of reference only. However, individual transcript sequences of the same gene can differ through naturally occurring variations (e.g. polymorphisms), each with its own valid existence. This clone is substantially in agreement with the reference, but a complete review of all prevailing variants is recommended prior to use. [More info](#)

OTI Annotation: This clone was engineered to express the complete ORF with an expression tag. Expression varies depending on the nature of the gene.

Components:	The ORF clone is ion-exchange column purified and shipped in a 2D barcoded Matrix tube containing 10ug of transfection-ready, dried plasmid DNA (reconstitute with 100 ul of water).
Reconstitution Method:	<ol style="list-style-type: none">1. Centrifuge at 5,000xg for 5min.2. Carefully open the tube and add 100ul of sterile water to dissolve the DNA.3. Close the tube and incubate for 10 minutes at room temperature.4. Briefly vortex the tube and then do a quick spin (less than 5000xg) to concentrate the liquid at the bottom.5. Store the suspended plasmid at -20°C. The DNA is stable for at least one year from date of shipping when stored at -20°C.
RefSeq:	<u>NM_013584.2</u> , <u>NP_038612.1</u>
RefSeq Size:	9663 bp
RefSeq ORF:	3279 bp
Locus ID:	16880
UniProt ID:	<u>P42703</u>
Cytogenetics:	15 3.46 cM
Gene Summary:	Signal-transducing molecule. May have a common pathway with IL6ST. The soluble form inhibits the biological activity of LIF by blocking its binding to receptors on target cells. [UniProtKB/Swiss-Prot Function]