

## Product datasheet for **MG221057**

### Espl1 (NM\_001014976) Mouse Tagged ORF Clone

#### Product data:

Product Type:	Expression Plasmids
Product Name:	Espl1 (NM_001014976) Mouse Tagged ORF Clone
Tag:	TurboGFP
Symbol:	Espl1
Synonyms:	AL024103; AU045071; Cerp; ESP1; PRCE; SSE
Mammalian Cell Selection:	Neomycin
Vector:	pCMV6-AC-GFP (PS100010)
E. coli Selection:	Ampicillin (100 ug/mL)
ORF Nucleotide Sequence:	>MG221057 representing NM_001014976 Red=Cloning site Blue=ORF Green=Tags(s)

TTTTGTAATACGACTCACTATAGGGCGCCGGGAATTCGTCGACTGGATCCGGTACCGAGGAGATCTGCC  
GCC**CGATCGCC**

ATGAGGAACCTCAAAGGAGTCAACTTCGCCACTCTGCTCTGCAGCAAGGAGGAGACCCAGCAGCTGCTGC  
CTGACTTGAAGGAGTTCCTGTCCAGATCCCGACTGATTTCCCCAGCAGCCGAACAGATGCCAAAGAAG  
ACAAATTTGCGATACCATCCTGAGGGCTTGCACCCAGCAGTTGACTGCCAAGCTCGATTGCCCTGGGCAC  
CTGAGGAGTATTTGGACCTGGCAGAGCTGGCCTGTGATGGCTATTTGTTGTCTACTCCACAGCGCCCTC  
CCCTCTACCTGGAACGCATTCTCTCATCTACTTCGCAATGGTCCACTCAGGGAAGCCAGACACTGT  
GCTGCGCCTTGCCAGCCTCTCCATGCCTGCTTGGTTCAGAACTCTGGAGAGGCTGCCCTCAGGACTAT  
GAGGCCGTGACCCGGGGCAGCTTCTCTGTTTTGGAAGGGAGCAGAGGCACTGTTGGAGCGGGCAGCTG  
CGTTCTCAACTCGGCTGAATGCCTTGAGCTTCTGGTGCTCTGGAGGATGGCAGTGTCCTGTGAGGT  
CCCTCACTTTGCTTCTCCAACCGCCTGTGCTTTAGTTGCCGCTATCAGCTGTACGATGTACAGGACAA  
GGTCTAGATGAAGCTGATGCCGACTTCTGTATGAAGTGTCTTAGGCACCTGATCAGAGTCTTAGTAG  
GTGAGGGTGGTAGCTCTCCCGTCTCTCGCCTCAGAGGGCCCTCTGCCTCTTGAAATCACCCCTGGA  
ACACTGCCGTGGCTCTGCTGGAACCACCACCAGCCAGGCTGCCAGAGCAGTGGAGAGGGCTCGTAAT  
CACCTAGAGAAGACCAGGGGAGTGGCCAGCTTCTGAGGAAGGAGCAGAGCGTTCTTATCAGCAGTATCGA  
TGAAGAAAGACCAGGGGAGTGGCCAGCTTCTGAGGAAGGAGCAGAGCGTTCTTATCAGCAGTATCGA  
GGCGCCGTGCCCCCGCTCCGGGCAATTGTACGACAGCTGCCAGTCTCTCTTTTCAGGCTGGAGAGAGGC  
ATCAGGAGGCACTGTGGACTTGATGCCATATTGAGTCTCTTTGCTTTTCTGGGGATACAGCTCCCTTG  
TCCGGCACCTGAGAGAAGTCTCTGAAGCATCTTCCAAGCAGCAGAGTGTGCTTCCAGATGCACCTCCA  
GGGTTTCCACCTTTCACCGGATTGTGTATGACTTTGCTCAAGGCTGTCAGGCAACTGAGCTTGCTCAG  
CTAGTGGACGGTGCAGATCTGCTGCTGTGGATGTTGGAGGCCTTAGAGGGCCTGTCGGGTGGAGAGC  
TGGCTGACTACCTGAGCATGACTGCCTTACACCAGCAACTGGCCTACAGCTTCTTTAGTCAGAAGCT  
CTATGAGGAGGCTCGTCATCTCAGAGCCAGTCTGTCAGCACTTGGGCTCGGCAACGTCGGGTGCTTGT



CCTGAAGTGCCTCCTGAGAAGCTACATAGGTGCTTCAGGCTGCATGTGGAGAGTTTGAAGAACTGGGTA  
AACAGGCCAGGGCTGCAAGATGGTGACCTTATGGCTGGCAGCTCTGAAACCCTACAGTCTGGAACACAT  
GGTCGAGCCAGTCACTTCTGGGTTTCGAGTCAAATGGATGCATCCAGGGCAGGAGACAAGGAGCTACAA  
CTTCAGACTTTCGAGACAGCCTAAGCTGCTGGGACCCAGAGACACAGTCTCTGCTTCTCAGGGAGGAGC  
TGCGGGCTACAAGTCACTACGGCTGACACTGGGCAGGAGCGCTTCAACATCATCTGTGATCTGCTCGA  
GCTGAGCCCTGAAGAGACAGCAGCTGGAGCCTGGGCAGCAGCTACCTACCTGGTGAAGTGGCCAAAGTG  
CTGTGCTACCACAACCTTACCAGCAGACCAACTGCTCTGCCTTGGATGCTGTCCAGGAAGCCCTGCAGC  
TTCTGGAGTCCGTGAGTCTGAGGCCAGGAGCAGGATCGACTTCTGGATGATAAAGCACAGGCCCTGTT  
ATGGCTTTACATCTGTACCTTAGAGGCCAAGATGCAGGAAGGTATTGAGCGGGATCGGAGAGCCAGGCC  
CCTAGTAACTTGGAGGAATTTGAAGTCAATGACCTGAACTATGAAGATAAAGTGCAGGAAGATCGTTTTT  
TGTATAGTAGCATTGCCTTCAATCTGGCTGCTGATGCAGCTCAGTCCAAATGCCTGGACCAGGCCCTGAC  
TCTGTGAAAGAAGTCTCACCAGGGGCGAGCCCAAGCTGTGCGGTGTCTCCAGCAGACTGCAGCCTCC  
CTGCAAATCCTAGCGCCGTCTATCAGTTGGTGGCAAAGCCCTTGAGGCTCTGGAGACCCTCTGCTCC  
TGCAGATTGTATCTAAGAGACTGCAGGACCACGAAAGGCAGCCAGCTCTTCTGCCAGCTTACCAGCT  
ACTCTTGAACCTTGGCTGTCCCAGCTATGCGCAGTTGTATCTGGAAGAGGCGGAGTCAAGCTGAGGAGC  
CTGGACCAGACAAGTACGCGTGCAGCTGCTGTCCCTGACCTGTGCTCTGCTTGGAAAGTCAAGCTGCT  
GGGCTTGCAGAAAGGTAAGTGCAGGCTTTTCTTTGTTGCTTTCTGTGCTTCCGGATCCTGCCCTCCAGAA  
GTCATCTAAGGCTTGGTACTTGCTACGTGTCCAGGCCCTGCAAGTCTTGGCTTTTACCTCAGTCTCTCG  
TCCAACCTCCTCTCAAGTGCCCTGCGTGAGCAGCTCTGGGATCAAGGCTGGCAGACCCCGGAGACGGCGC  
TGATTGATGCCACAAGTCTCAGAAGCATCATCTTCTGCTCATGGGAAGTGTGTGCTCTCCATTCA  
GAAAGCAGCCACCGAGTCGCCCTTCTGGACTACGGTGAAGTCTGGTGCAAAATGGCAGGTTCTCACA  
GAGGTGCTGACCTGCTCGAGAGGCTGGTCCGCCCGCTGGGTGCCTGGGAACGTGAGTGAGGCCAAGG  
CCTTTTGTCTGGAGGCCCTAAAACCTACGACTAAGCTGCAGATACCTCGCAGTGTGCCCTGTTCTTGT  
ACTGAAGGGTGAAGTGGAGCTGGCCCGGGTACATTGACCTCTGTGAGTCAAGCTTGCAGAGCTTGCAGCAGTCTC  
TTCTTGTCTGAGTCTTCCACAGAGTTTGGTGTGTGACCCAGCATCCAGACTCAGTGAAGAGGTGCACA  
CGCAGAAAGGGAAGCATAAGGCTCAAGGCCATGTTTCCACCCCTGTCAGAGGAGGAGCCCTTCTGAA  
AGGTCCTGCCCTTGAAGTGGTGGACTGTGCTCAACGAACCTGGTCCCATCCAGTCTCTGTAACTCC  
TCCCCAGTCTGAAAACCAAGCCACCACCAACCTGGCTTCTGTCTCACTTGCCAGCTGTGACTGCT  
TACTGTGTGCCAGCCCTGCCCTCTCAGCAGTCTGTCTGCGCTGGGTGCTGGTCACTGCCGGAGTGAGGCT  
GGCCACCGGTCAAAAGCTCAGGCTGGATCTGCTGCAAGCTGTGCTGACGCGTGGCCCTGCAGCCACC  
AAGCGCTTACACAGAGTCTCAAGCTTCTCTGAATCACAGAACAACCCCTCTTGTGTTCCAGCCTCT  
TTGATGAGATCATGGCTCAAGTGTACACGCACTTGGCATTGGAGTTCCTGAATCAGACATCTGAAAAGAG  
CCTGGGAAGGTCCTGGCGTCCGGGCTGAAGTTTGTGGCAACACGGATACAGAGCTTGGAGATCTGGAGA  
GCCACCTGCTCTTGGTTTCAAGGCTTGCAAAAGTGGCCCACTTCAAGTCTGTACTTCCGAACCTTTG  
CAAGTCTTGGGCTGGCACCCACCATAGTAAAAAGTCTGCCAGTCTTAGAGCCTGCTAAAATTCGGAG  
ACAAAATGCTCTGGACGGGGCCCGCGGATAGCCTCTGTTCCCCACCCCTCCATAACAGCTCTCAG  
AAAGGCTGGAAGAGGAAGGGCCACCTGTACCCTAAGCCTCCAGGTCGGGCTAGGCAAGCTGGCCCTC  
GTGTCCCTTACCATATTTGAAGAAGTCCACCCACCAAGAGCAAGCTCCAGGTTCCCTTGGCTCCCAG  
GGTCCACAGGCGGGCCAGACTCGCTCAAGGTGATCTTCAAGTGTGATGACAGTACCTGGAAGACCTTGT  
TCAGTGCACACAACCTGTAGAGGAGCCTAAGAGGCGAGGACTGCTTCCCGTACCCGGGCAAACTA  
GGAAGGGACGTAGCTTAAAGACAGATGCGGTGGTTGCTATAGAAAAGTACCCTGGACATTCCAGTGTGAG  
TGGGAGGACTCGGAGGGCCAGGAAGGTGGCTTCAAGAAATGTGAAGAAGAGAGTCCCAAAGCACCCCTC  
TGTGTCTGGGCCAGCCAGGACCCGAGATCATGAGAAGTATCCCTGAAGAGGAGCCAGTGGACAACCATC  
TGGAAAAAGCTTCGAGATTCTCAGGGTTCTGATGGGAAGACTCGGCCTCAGGTGAGAAGGGGCGAGC  
TGCAGACTGGTCTACCCGTAGGAGAGTGTGAGGTGTGAGACGGGACTCCAGCAAGGCAGAGAGACCT  
GTCTTGTACTCAGACACGGAGGCCAATAGTGACCTAGTCTTGGCTCCCACCTTCTCAGTTCTGTCAC  
CCATTGATCTTCTACCTGGATTCCATTTCTGACTCATTGAGCATTGCTTCCGTGGTGTAGTCACTG  
CCCTCAAAGTGGGCTCTATGCTACCTCTGCCGCTTCTTGGCCCTGTGTCTGGGCCACCGAGATCCTTAT  
GCCACTGCGTTCCTTGTGCTGAGTCTATCTCCATCACCTGCCGTACCAGCTGCTCACCCACTGCACC  
GACAGCTCAGCAAGGCCAGAGCAGCAAGAATCACCTGAACTGGCAGAGCATCTGCAGAGGCTGGACCT  
GAAGGAGAGGCCCGGAGGTGTCCACTGGCCCGTATCCAGCGCCTTTTTCTTTAAGGCTTTGGGATCT  
GGCTGCTTCCCCAGGCAGAGAAGGAGAGTTTCCAGGAGCGCCTGGCTCTGATCCCTAGTGGGGTACTG

TCTGTGTGTTGGCTCTGGCCACCCTCCAGCCTGGAACCTTGAGCAACACTCTTTTACTGACCCGCCTGGA  
AAAGGACAACCCCAATTACTGTGAAGATCCCCACTGCCAAAATAAGCTCCCTCTAAGCGCAGTGCTG  
AAAGAGTTTGATGCCATCCAGAAGGACCAAAAAGAAAACAGCAGCTGACTGAGAAACGAGTATGGTGGA  
CGGGCCGGCTGGCACTGGACCAAGGATGGAGGCACTCATCACCGCCCTGGAGGAACAGGTGCTGGGCTG  
CTGGAGGGGGCTGCTGCTGCCATGCAGTGTGACCCAGCCTTGCCCAGGAGGCCTCAAACACTACAAGAG  
CTGCTGCGGGAATGTGGCTGGGAATATCCTGACTCCACTCTCTGAAAGTCATCCTTAGTGGGGCCAGAA  
TCCTCACCAGCCAGGATGTTTCAGGCCTTGGCGTGTGGGCTGTGCCAGCCAGCCTGACCGAGCCCAAGT  
GCTCCTGAGCGAGGCAGTAGGACAGGTTTCAGAGCCAGGAGGCCCTCGAAGTCAACATCTTGTATTGGTG  
TTAGACAAGGACCTGCAAAAGCTGCCTTGGGAAAAGCACGCCATCCTCCAAGCACAGCCGGTCACCCGGC  
TGCCCTCCTTCCGCTTCTGCTCAGCTACACAGTCACTAAAGAGGCTGGAGCCTCATCAGTGTGAGCCA  
AGGTGTTGATCCACAGAATACCTTCTATGTGCTAAACCTCACAGTAACCTGTCGAGCACAGAGGAGAGA  
TTTCGAGCCAGTTTTAGCAGTAAAAGTGGCTGGAAAGGAGTGATTGGGGAAGTCCAAGCCTCGATCAGG  
TGCAGGCTGCCCTGACAGAGCGGATTTATATATCTACGCAGGGCACGGAGCCGGTGCCCGCTTCTTGA  
TGGGCAGGCTGTCTGCGGCTGAGCTGCCGGGCGGTGCCCTGCTGTTGCGCTGCAGCAGTGCAGCCCTT  
GCCGTGCATGAAACCTGGAGGGAGCTGGTATCGTGCTCAAGTACATCATGGCTGGCTGCCCTTGTTC  
TAGGTAATCTCTGGGATGTGACTGACCGTGACATTGACCGTTACACAGAGGCTTTGCTGCAGGGCTGGCT  
GGGAGCAGGCCAGGGGCTCCCTTTCTCTACTATGCCAGCCAAGCCGCCAGGCCCTCGACTCAAGTAC  
CTCATTGGTGCTGCACCTGTAGCCTACGGCCTACCTATCTCTCTGCAGACACC

AGCGGACCGACGCGTACGCGGCCGCTCGAG - GFP Tag - GTTTAA

**Protein Sequence:** >MG221057 representing NM\_001014976  
 Red=Cloning site Green=Tags(s)

```

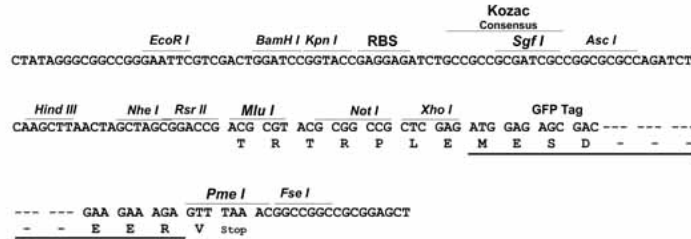
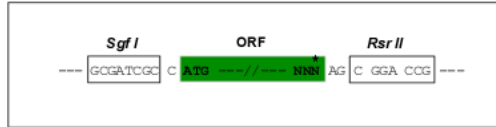
MRNFKGVNFATLLCSKEETQQLLPDLKEFLSRSRTDFPSSRTDAERRQICDTILRACTQQLTAKLDCPGH
LRSILDLAELACDGYLLSTPQRPLYLERILFILLRNGSTQGSPTVLRLAQPLHACL VQNSGEAAPQDY
EAVTRGSFSLFWKGAEALLERRAAFSTRNLNLSFLVLLLEDGSVPCEVPHFASPTACRLVAAYQLYDATGQ
GLDEADADFLYEVL SRHLIRVL VEGEGSSPGPLSPQRALCLLEITLEHCRRLCWNHHHRQAARAVARARN
HLEKTSVAPSLQLCQMGVELLEAVEERPGAVAQLLRKA AA VLSSIEAPSPPLRALYDSCQFFLSGLERG
IRRHCGLDAILSLFAFLGGYSSLV RHLREVSEASSKQQQCLLQMHFQGFHLFTGIYDYFAQGCQATELAQ
LV DGCRAAVWMLEALEGLSGGELADYLSMTASYTNSLAYSFFSQKLYEEACVISEPVCQHLGSATSGAC
PEVPPEKLHRCFRLHVESLKKLKGQAQCGKMTLWLAALKPYSL EHMVEPVTFWVRVKMDASRAGDKELQ
LQTLRDSLSCWDPETQSLLLREELRAYKSVRADTGQERFNIICDLLELSPEETAAGAWARATYLVELAQV
LCYHNFTQQTNCALDAVQEALQLLESVSPEAQEQDRLLDDKAQALLWL YICTLEAKMQEGIERDRRAQA
PSNLEEFVNDLNYEDKQEDRFLYSSIAFNLAADAAQSKCLDQALTLWKEVLT KGRAPAVRCLQQTAAAS
LQILAAVYQLVAKPLQALETLLLLQIVSKRLQDHAKAASSSCQLTQLLLNLGCPSYAQLYLEEAESSLRS
LDQTS DACQLLSLTCALLGSQLCWACQKVTAGFSLLLSVLRDPALQKSSKAWYLLRVQALQVLA FYLSLS
SNLLSSALREQLWDQGWQTPETALIDAHKLLRSIIILLMGSDVLSIQKAATESPFLDYGENLVQKQVLT
EVLTCSERLVGRGLGNVSEAKAFCLEALKLTKLQIPRQCALFVLKGELELARGDIDLQSDLQQVVL
FLESSTFEFVVTPHPSVKKVHTQKGGKHAQGPCFPPLSEEPFLKGPAL ELVDTVLNEP GPIQSSVNS
SPVLKTKPPPNP GFLSHLPSCDCLLCASPALSAVCLRWWLVTAGVRLATGHKAQGLDLLQAVLTRCPAAT
KRFTQSLQASLNHRTTPSCVPSLFDEIMAQVYTHLALEFLNQTSEKSLGKVLASGLKFVATRIQSLEIWR
AHL LLVQALAKLAHFSCCTSELFASSWGWHPPLVKSLPVLEPAKIRRQKCSGRGRRRIASVPPPLHNSSQ
KGLEEEGPPCTPKPPGRARQAGPRVPFTIFEEVHPTKSKLQVPLAPRVHRRRAQTRLKVIFSDSDLEDLV
SADTQLVEEPKRRGTASRTRGQTRKGRSLKTDAVVAIESTPGHSSVSGRTRRRARKVASRNCEEESPKAPL
CVWASQGPEIMRSIPEEPEVDNHLEKSFEILRGSDGDSASGEKAAAADTGLPVGECEVLRDRSSKAERP
VLYSDTEANSDPSPWLPFVSPAPIDLSTLDSISDSLIAFRGVSHCPPSGLY AHLCRFLALCLGHRDPY
ATAFLVAESISITCRHQLLTHLHRQLSKAQKQESPELAEHLQRLDLKERPGGVPLARIQRLFSFKALGS
GCFPQAEKESFQERLALIPSGVTVCVLALATLQPGT LSNL LTRLEKDNPPITVKIPTAQNKLPLSAVL
KEFDAIQKQKENS SCTEKRVWWTGRLALDQRMEALITALEEQVLGCWRG LLLPCSADPSLAQEASKLQE
LLRECGWEYPDSTLLKVILSGARILTSQDVQALACGLCPAQPDRAQVLLSEAVGQVQSQEAPRSQHLVLV
LDKDLQKLPWESTPILQAQPVTRLPSFRFLLSYTVTKEAGASSVL SQGVDPQNTFYVLNPHSNLSSTEER
FRASFSETGWKGVIGEVPSLDQVQAALTERDLYIYAGHGAGARFLDGQAVLRLSCRAVALLFGCSAAL
AVHGNLEGAGIVLKYIMAGCPLFLGNLWDVTRDIDRYTEALLQGWLGAGPGAPFLYYASQARQAPRLKY
LIGAAPVAYGLPISLQTP
  
```

SGPTRRRLE - GFP Tag - V

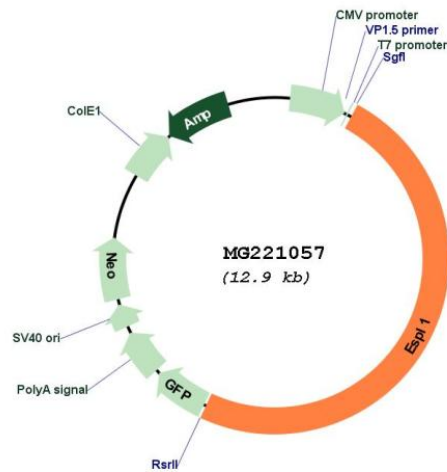
**Restriction Sites:** Sgfl-RsrII

**Cloning Scheme:**

Cloning sites used for ORF Shuttling:



**Plasmid Map:**



**ACCN:** NM\_001014976

**ORF Size:** 6354 bp

**OTI Disclaimer:** The molecular sequence of this clone aligns with the gene accession number as a point of reference only. However, individual transcript sequences of the same gene can differ through naturally occurring variations (e.g. polymorphisms), each with its own valid existence. This clone is substantially in agreement with the reference, but a complete review of all prevailing variants is recommended prior to use. [More info](#)

**OTI Annotation:** This clone was engineered to express the complete ORF with an expression tag. Expression varies depending on the nature of the gene.

<b>Components:</b>	The ORF clone is ion-exchange column purified and shipped in a 2D barcoded Matrix tube containing 10ug of transfection-ready, dried plasmid DNA (reconstitute with 100 ul of water).
<b>Reconstitution Method:</b>	<ol style="list-style-type: none"><li>1. Centrifuge at 5,000xg for 5min.</li><li>2. Carefully open the tube and add 100ul of sterile water to dissolve the DNA.</li><li>3. Close the tube and incubate for 10 minutes at room temperature.</li><li>4. Briefly vortex the tube and then do a quick spin (less than 5000xg) to concentrate the liquid at the bottom.</li><li>5. Store the suspended plasmid at -20°C. The DNA is stable for at least one year from date of shipping when stored at -20°C.</li></ol>
<b>RefSeq:</b>	<u><a href="#">NM_001014976.2</a></u> , <u><a href="#">NP_001014976.1</a></u>
<b>RefSeq Size:</b>	6630 bp
<b>RefSeq ORF:</b>	6357 bp
<b>Locus ID:</b>	105988
<b>UniProt ID:</b>	<u><a href="#">P60330</a></u>
<b>Cytogenetics:</b>	15 F2
<b>Gene Summary:</b>	Caspase-like protease, which plays a central role in the chromosome segregation by cleaving the SCC1/RAD21 subunit of the cohesin complex at the onset of anaphase. During most of the cell cycle, it is inactivated by different mechanisms (By similarity).[UniProtKB/Swiss-Prot Function]