

## Product datasheet for **MG221009**

### **Cbx4 (NM\_007625) Mouse Tagged ORF Clone**

#### **Product data:**

Product Type:	Expression Plasmids
Product Name:	Cbx4 (NM_007625) Mouse Tagged ORF Clone
Tag:	TurboGFP
Symbol:	Cbx4
Synonyms:	MPc2; PC2
Mammalian Cell Selection:	Neomycin
Vector:	pCMV6-AC-GFP (PS100010)
E. coli Selection:	Ampicillin (100 ug/mL)



[View online »](#)

**ORF Nucleotide Sequence:**

>MG221009 representing NM\_007625  
 Red=Cloning site Blue=ORF Green=Tags(s)

TTTTGTAATACGACTCACTATAGGGCGGCCGGAATTCGTCGACTGGATCCGGTACCGAGGAGATCTGCC  
 GCC**CGCATCGCC**

ATGGAGCTGCCAGCTGTTGGCGAGCACGTCTTCGCGGTGGAGAGCATCGAAAAGAAGCGGATACGCAAGG  
 GCAGAGTGGAGTATCTGGTGAATGGAGAGGCTGGTCCCCAAATATAACACGTGGGAACAGAGGAGAA  
 CATCTTGATCCCGGCTGCTGATCGCCTTCCAGAACAGGAAAGGCAGGAGCAGCTGATGGGATATCGC  
 AAGAGAGGGCCCAAGCCAAACCGCTGGTGGTGCAGGTGCCACCTTTGCCCGACGCTCCAATGTTCTGA  
 CTGGGCTTCAAGACTCCTCCGCTGACAACCGTCCAAGCTGGAGTTGGGCACACAGGGCAAGGGCCAGGG  
 GCACAGTATGAGCTCAACAGCAAGAAGCACCATCAGTACCAGCCACATAGCAAGGAGAGGTCCGGTAAG  
 CCGCCCCGCCAGGGAAGAGCGCAAGTATTATTATCAGCTAAATAGCAAAAAGCACCACCCTACCAGC  
 CAGACCCCAAAATGTACGACTGCAGTACCAGGGCGGCCACAAGGAGGCACCCAGCCCCACCTGCCAGA  
 CCTGGGCACCAAGAGCCACCCTCCTGACAAGTGGGCCACGGAGCTGCAGCCAAAGGCTACCTCGGGGCC  
 GTGAAGCCCTTGGGGGGAGGGGCAGGAGCTCCAGGCAAGGGCTCGGAAAAAGGCCCCCAATGGCATGA  
 CACCAGCCCTAAGGAGGCAGTGACCGGTAAATGGTATTGGGGCAAGATGAAAATCGTCAAGAACAGAA  
 CAAGAATGGGCGCATCGTGATCGTTATGAGCAAGTACATGGAGAACGGCATGCAGGCAGTAAAAACAAG  
 TCGGGCGAGGCCCGGAGGGCGAGGCGCCTCCCCAGCCACAAGAAACGTGCTGCCGAGGAGCGCCATC  
 CCCAGGGCGACAGGACTTTTAAAAGGCAGCCGGTGCCTCTGAGGAGAAGAAAGCCGAAGTGCCTGCAA  
 ACGCAGGGAGGAGGCTCTGGTGTGGGGGACGCGCAGCCCCAGGACCTAGGGTCTCGAAAGCTCTCC  
 CCGACCAAGGAGGCTTTGGTGTGAGCAACCGTACAGCTCACCACCAAGCCAGACCTGCTGGCCTGGGACC  
 CAGCCAGGAGCTCGACCCCGCCACCACCACCATCACCACCACCATCACCACCACCATCACCACCACCATC  
 GGGCCTGAACCTCTCCATGCGCGCAAGCGCTGCCTCTCCGAGACCCATGGGGAGCGTGAGCCCTGTAAG  
 AAGCGTTGACCGCCGACGATCAGCACGCGCCTGCCTGGGGGCGAGCCGGTCTCCGAGCACCCCTG  
 CCAACGTATCCCCACCGCGCCTCTCTGCCGAGCCGAGGTCACTCTTTAGACTCAGACCTGGATGA  
 ACCCATAGACTTGCCTGTGTAAGATGCGCAGCGACCGGGGAACCGCCAGCACCCCTCCAGGTGAAG  
 CCCGAGGCTCCAGCTGTGGCGCAGTGGTGGCGCCGCCCTGCCTCAGAGAAGCCTCCCGCTGAGGCC  
 AGGAGGAGCCAGTGGAGCCCTTGTGAGTTCAAGCCCTCTTTGGGAATATAATTACTGACGTCAC  
 GGCGAAGTGCCTTACCGTCACTTCAAGGAATACGTGACGGTG

**ACGCGTACGCGGCCGCTCGAG** - GFP Tag - GTTTAA

**Protein Sequence:**

>MG221009 representing NM\_007625  
 Red=Cloning site Green=Tags(s)

MELPAVGEHVF AVESIEKKRIRKGRVEYLVKWRGWSPKYNTWEPEENILDPRLLIAFQNRERQEQLMGYR  
 KRGPKPKPLVVQVPTFARRSNVLTGLQDSSADNRAKLELGTQGGQGHQYELNSKKHHQYQPHSKERSGK  
 PPPPCKSGKYYYQLNSKKHHPYQPDPKMYDLQYQGGHKEAPSPTCPDLGKSHPPDKWAHGAAGKYLGA  
 VKPLGGGAGAPGKSEKPPNGMTPAPKEAVTNGIGGKMKIVKNKNKNGRIVIVMSKYMENGMQAVKIK  
 SGEAAEGEARSPSHKRAAEERHPQGDRTFKAAAGASEEKAQVPCRRREEEALVSGDAQPDLGSRKLS  
 PTKEAFGEQPLQLTTKPDLLAWDPARSSHPPAHHHHHHHHHHHHHTVGLNL SHARKRCLSETHGEREPC  
 KRLTARSISTPTCLGGSPVSEHPANVSPTAASLPQPEVILLDSLDLDEPIDLRVCMRSDAGEPPSTLQVK  
 PEAPAVAAVVAPAPASEKPPAEAEQEEPVEPLSEFKPFFGNIIITDVTANCLTVTFKEYVTV

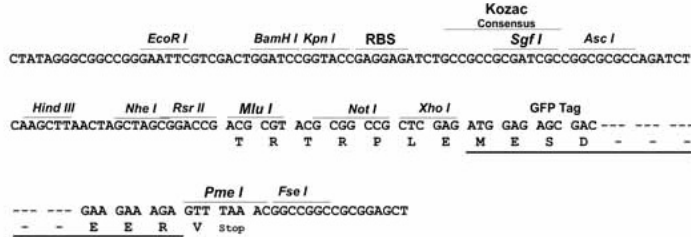
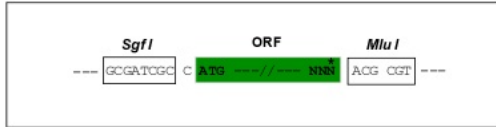
**TRTRPLE** - GFP Tag - V

**Restriction Sites:**

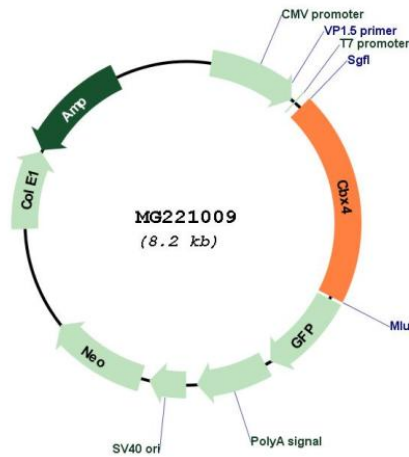
Sgfl-MluI

**Cloning Scheme:**

Cloning sites used for ORF Shutting:



**Plasmid Map:**



<b>ACCN:</b>	NM_007625
<b>ORF Size:</b>	1653 bp
<b>OTI Disclaimer:</b>	The molecular sequence of this clone aligns with the gene accession number as a point of reference only. However, individual transcript sequences of the same gene can differ through naturally occurring variations (e.g. polymorphisms), each with its own valid existence. This clone is substantially in agreement with the reference, but a complete review of all prevailing variants is recommended prior to use. <a href="#">More info</a>
<b>OTI Annotation:</b>	This clone was engineered to express the complete ORF with an expression tag. Expression varies depending on the nature of the gene.
<b>Components:</b>	The ORF clone is ion-exchange column purified and shipped in a 2D barcoded Matrix tube containing 10ug of transfection-ready, dried plasmid DNA (reconstitute with 100 ul of water).
<b>Reconstitution Method:</b>	<ol style="list-style-type: none"><li>1. Centrifuge at 5,000xg for 5min.</li><li>2. Carefully open the tube and add 100ul of sterile water to dissolve the DNA.</li><li>3. Close the tube and incubate for 10 minutes at room temperature.</li><li>4. Briefly vortex the tube and then do a quick spin (less than 5000xg) to concentrate the liquid at the bottom.</li><li>5. Store the suspended plasmid at -20°C. The DNA is stable for at least one year from date of shipping when stored at -20°C.</li></ol>
<b>RefSeq:</b>	<a href="#">NM_007625.2</a> , <a href="#">NP_031651.2</a>
<b>RefSeq Size:</b>	5213 bp
<b>RefSeq ORF:</b>	1656 bp
<b>Locus ID:</b>	12418
<b>UniProt ID:</b>	<a href="#">O55187</a>
<b>Cytogenetics:</b>	11 83.34 cM
<b>Gene Summary:</b>	E3 SUMO-protein ligase which facilitates SUMO1 conjugation by UBE2I. Involved in the sumoylation of HNRNPK, a p53/TP53 transcriptional coactivator, hence indirectly regulates p53/TP53 transcriptional activation resulting in p21/CDKN1A expression.[UniProtKB/Swiss-Prot Function]