

Product datasheet for **MG220995**

Sin3b (NM_009188) Mouse Tagged ORF Clone

Product data:

Product Type:	Expression Plasmids
Product Name:	Sin3b (NM_009188) Mouse Tagged ORF Clone
Tag:	TurboGFP
Symbol:	Sin3b
Synonyms:	2810430C10Rik
Mammalian Cell Selection:	Neomycin
Vector:	pCMV6-AC-GFP (PS100010)
E. coli Selection:	Ampicillin (100 ug/mL)
ORF Nucleotide Sequence:	>MG220995 representing NM_009188 Red=Cloning site Blue=ORF Green=Tags(s)

TTTTGTAATACGACTCACTATAGGGCGGCCGGGAATTCGTCGACTGGATCCGGTACCGAGGAGATCTGCC
GCC**CGATCGCC**

ATGGCGCATGCAGGCAGCGGAGGCTCCGCGGGCCGGGATTCGGTGGCTCCCGCTGGGGTCGTTCCGGCT
CCGGAGGGCAGAGAAGCTGCCGGTGCACGTGGAGGACGCTCTCACCTACCTCGACCAGGTGAAGATCCG
CTTTGGCAGTGACCCTGCCACCTACAACGGCTTCTGGAGATCATGAAGGAGTTCAAAGCCAGAGCATC
GACTCTGGTGTGATCAGGCGTGTGCCAGCTTCCATGAGCACCTGACCTCATCGTGGGTTTA
ATGCTTTCCTCCGCTTGATACCGTATAGACATTCCTCAAGAACGCAAGCTGAACATCCAGTCGCCGT
GAGCAGCCAGGACAACCTCCATAGCCATGGTACTGTGGGGAGGACTTCAAGCAGATGTCCTACAAGGAG
GACAGAGGCCAGGTGCCCTGGAGTCTGACTCTGTGGAGTTCAACAATGCTATCAGCTATGTGAACAAGA
TCAAGACCCGCTTTCTGGACCACCTGAGATCTACAGGTCCTTCTGGAGATCTACACACCTACCAGAA
GGAACAGCTGCACACTAAGGGCCGTCCATTCCGTGGCATGTCTGAGGAGGAGGTTTTACAGAGGTGGCC
AATCTTTCCGTGGTCAGGAGGACCTGCTGTGAGATTCGGACAGTTCCTGCCTGAGGCAAAGCGGTCCC
TGTTTACAGGCAATGGGTCTGCGAGATGAACAGTGGGCAGAAGAATGAGGAGAAGAGTCTGGAACACAA
CAAGAAACGCTCTCGGCCTTCACTCCTGCGCCCTGTGTCTGCGCCAGCCAAGAAGAAGATGAAGTCCGA
GGCACCAAAGACCTGTCCATTGCTGCCGTGGGAAATACGGCACACTGCAGGAATTCCTCTTTTGACA
AGGTGCGCAGGGTGTGAAGAGCCAGGAGGTATATGAGAACTTTCTGCGCTGCATTGCGCTCTCAATCA
GGAGCTGGTGTCCGGTCTGAGTTGCTGCAGCTTGTGAGTCCATTCTGGGAAATTTCCAGAACTCTTT
GCACAGTCAAGTCTTCTAGGAGTGAAGAGCTGTCCTTTGCACCACCTATGAGTGACCGGTCTGGAG
ATGGGATAAGCAGAGAAATTGACTATGCGTCTTGTAAAGCAATAGGATCCAGCTATCGGGCACTTCCCAA
GACCTACCAGCAGCCAAAGTGCAGCGGAAGGACTGCCATTTGCAAGGAGGTCTGAATGATACATGGGTC
TCCTTTCCATCCTGGTCTGAAGACTCCACCTTTGTAGCTCCAAGAAGACGCCCTACGAGGACAACTGC
ATCGCTGTGAGGATGAGAGATTTGAATTGGATGTTGTCTGGAGACCAACCTGGCCACCATCCGAGTGCT
GGAGAGTGTGAGAAGAAGTTGCACGGATGGCTCCTGAGGACCAGGAGAAGCTCCGCTGGATGACTGC



[View online »](#)

CTGGGTGGCACATCAGAGGTGATTCAACGCCGTGCCATACACCGCATCTATGGAGACAAGGCCCCAGAGG
 TCATTGAGAGCCTGAAAAGGAACCTGCCACCGCTGTGCCTGTCGTTCTGAAAAGGCTGAAGGCCAAGGA
 GGAGGAGTGGCGGGAGGCCAGCAGGGCTTCAACAAGATCTGGCGTGAGCAGTACGAGAAAGCATACTC
 AAGTCCCTGGACCACCAGGCTGTGAAGTCAAGCAGAATGACACCAAGGCACTGCGCTCTAAGAGCCTGC
 TCAATGAGATCGAAAGTGTCTATGATGAGCACCAGGAGCAGCACTCAGAGGGCCGAGTGCCTCCAG
 CGAGCCGACCTTATCTTCGTGTATGAGGACCGACAGATCCTAGAGGACGACGAGCAGCCTCATCAGCTA
 TATGTTAAGCGCGACCCAGCCATTCAGAAAGAGGACCCAGGGCACTATCCGCCAGTGTCTCACCGTTTCC
 TGCCAGCCTGTTCTTCTCGCAGCAGTGCCTCCGACCTCCGATGACTCTGCTGATGAGCCGACCGGGA
 CCGGGACAGCGCTGAGCCTGAGCGCCGCGGCCACAGATGAGAAGCCCTGCAGATGCATCTCCAGAA
 CCGCCCAAGTCTGGACGATGTGTACAGTCTGTTTTTGGCAACAACAAGTGGTACTTCTCTGCGGC
 TGCACCAGACGCTGTGCGCCCGCTGCTCAAGATCTACCGGCAGGCGCAGAAGCAGCTGTGGAACATCG
 ACGAGAGCAGGAGAGGGAGCAGCTGTGTGCGAGGGCCGCGTGAGAAGGCTGCAGACCTGCCATGGAG
 CTGCGACTCAAGCAGCCTAGTGAAGTGGAGCTGGAGGAGTACTACCGGCCTTCTGGACATGGTGGGA
 GCCTGCTAGAGGGGAGCATCGACCCACACAGTATGAGGACACTCCTCGTGAAGTGTCCACATCCATGC
 CTACATTGGCTTCACTATGGACAAGCTAGTGCAGAATTCGCCGCCAGCTACACCATCTGGTGAAGTGC
 GAGCATGTCTGAAGGTGGTAGAGCTGTACCTGAATGAGCAGCAGCGAGGGGAGCGGGGGAAACCTGT
 CCTCCAGATGTGTTCTGTCAGCAGCGGGAGACTAGCTATCAGTGAAGCGGGAGCGCTGCATGGCAGATGA
 GAACTGCTTCAAGGTAATGTTTCTGCAGCGCAGAGGTCAGGTGATCATGACCATAGAGCTCCTGGACACA
 GAAGAGGCACAGACTGAGGACCTGTGGAGGTACAGCAGCTGGCTCGCTATGTGGAGCAGTATGTGGGT
 CTGAGGGTGCATCCAGCTCATCTACTGAAGGCTTCTGCTGAAGCCGGTGTCTGTCAGAGGAACCTGAA
 GAAGTTCGGCGTTGGCAGTGTGAGCAGGTACGTGCCATGCGCGGTGAGGCTAAGAGCTCCTGGAAGCGG
 CTCATGGGCGTGGAGAGCGCTTGTGATGTGGACTGCCGTTCCGCTTGGGCACACACAAGTGGTGTCA
 TCGTCAATTCCGAGGACTACATGTACCGCCGTGGGACACTATCCGCTGCCAAGCAGGTGCAGCCCTGGT
 GTTGTTCGCCACCACCGCACTTCAGAGAGTGGCATGGTCGCTGGCTGGAGGACAATGTAAGTGTGGCG
 GCGGCAGGGCTGGTGCAGGACTGGCTGATGGGTGAGGAAGAGGAGGACATGGTACCCTGCAAGACGCTTT
 GCGAGACTGCGCATGTTACGGGCTGCCGGTACTCGCTACCGAGTGCAGTACAGCCGCCCGCTGCTTCC
 ACCC

ACGCGTACGCGGCCGCTCGAG – GFP Tag – GTTTAA

Protein Sequence:

>MG220995 representing NM_009188
 Red=Cloning site Green=Tags(s)

MAHAGSGSAGRFGGSRWGRSGSGGHEKLPVHVEDALTYLDQVKIRFGSDPATYNGFLEIMKEFKSQSI
 DTPGVIRRVSQFLFHEHPDLIVGFNAFLPLGYRIDIPKNGKLNISPLSSQDNHSHGDCGEDFKQMSYKE
 DRGQVPLESDSVEFNNAISYVNIKTRFLDHPEIYRSFLEILHTYKQELHTKGRPFGRMSEEEVFTEVA
 NLFRRQEDLLSEFGQFLPEAKRSLFTGNGSCEMNSGQKNEEKSLHNNKRSRPSLLRPVSAPAKKKMKLR
 GTKDLSIAAVGKYGTLEFQFFDKVRRVLSQEVYENFLRCIALFNQELVSGSELLQLVSPFLGKFPFLF
 AQFKSFLGVKELSFAPPMSDRSGDGI SREIDYASCKRIGSSYRALPKTYQQPKCSGRTAICKEVLNDTWV
 SFPSWSEDSTFVSSKKTPEYEQHLRCEDEFELDVVLETNLATIRVLESVQKLSRMAPEDQEKLRLLDDC
 LGGTSEVIQRRAIHRIYGDKAPEVIESLKRNPATAVPVVLKRLKAKEEWEWAQQGFNKIWRQYEKAYL
 KSLDHQAVNFKQNDTKALRSKSLLEIESVYDEHQEQHSEGRSAPSSPHLIFVYEDRQILEDAALISY
 YVKRQPAIQKEDQGTIRQLLHRFLPSLFFSQQCPGTSDDSADERDRDRDRAEPERRRPTDEKPPADASPE
 PPKVLDVYSLFFANNWYFFLRLHQTLCARLLKIYRQAQKQLLEHRREQEREQLCEGRREKAADPAME
 LRLKQPSEVELEEYYPFLDMVRSLLLEGSIDPTQYEDTLREMFTIHAYIGFTMDKLVQNIARQLHHLVSD
 DVCLKVVELYLNEQQRGAAGGNLSSRCVRAARETSYQWKAERCMADENCFKVMFLQRRGQVIMTIELLDT
 EEAQTESDPVEVQHLARYVEQYVGESESSSTEGFLLKPVFLQRNLKFRFRWQCEQVRAMRGEAKSSWKR
 LMGVESACDVDCRFRLGTHKMFIVNSEDMYRRGTL CRAKQVQPLVLLRHRHFEEWHGRWLEDNVTVA
 AAGLVQDWMGEEEEEDMVPCKTLCETAHVHGLPVTRYRVQYSRRPASP

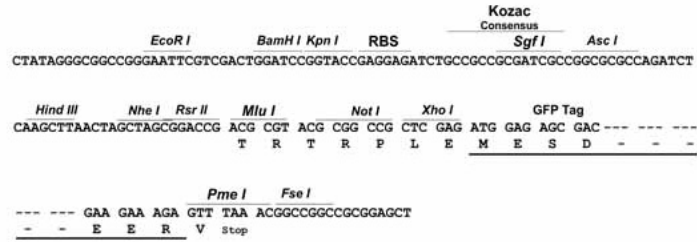
TRTRPLE – GFP Tag – V

Restriction Sites:

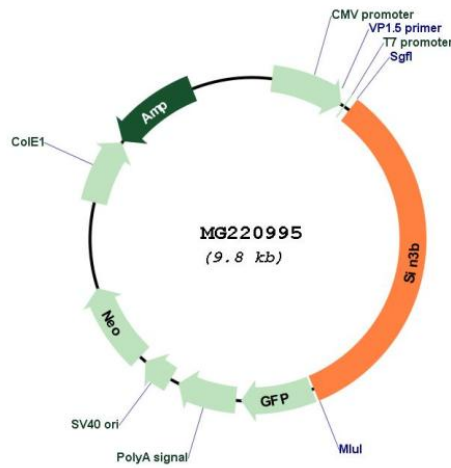
Sgfl-MluI

Cloning Scheme:

Cloning sites used for ORF Shutting:



Plasmid Map:



ACCN: NM_009188

ORF Size: 3294 bp

OTI Disclaimer:	<p>Due to the inherent nature of this plasmid, standard methods to replicate additional amounts of DNA in E. coli are highly likely to result in mutations and/or rearrangements. Therefore, OriGene does not guarantee the capability to replicate this plasmid DNA. Additional amounts of DNA can be purchased from OriGene with batch-specific, full-sequence verification at a reduced cost. Please contact our customer care team at custsupport@origene.com or by calling 301.340.3188 option 3 for pricing and delivery.</p> <p>The molecular sequence of this clone aligns with the gene accession number as a point of reference only. However, individual transcript sequences of the same gene can differ through naturally occurring variations (e.g. polymorphisms), each with its own valid existence. This clone is substantially in agreement with the reference, but a complete review of all prevailing variants is recommended prior to use. More info</p>
OTI Annotation:	<p>This clone was engineered to express the complete ORF with an expression tag. Expression varies depending on the nature of the gene.</p>
Components:	<p>The ORF clone is ion-exchange column purified and shipped in a 2D barcoded Matrix tube containing 10ug of transfection-ready, dried plasmid DNA (reconstitute with 100 ul of water).</p>
Reconstitution Method:	<ol style="list-style-type: none">1. Centrifuge at 5,000xg for 5min.2. Carefully open the tube and add 100ul of sterile water to dissolve the DNA.3. Close the tube and incubate for 10 minutes at room temperature.4. Briefly vortex the tube and then do a quick spin (less than 5000xg) to concentrate the liquid at the bottom.5. Store the suspended plasmid at -20°C. The DNA is stable for at least one year from date of shipping when stored at -20°C.
RefSeq:	<p>NM_009188.4, NP_033214.2</p>
RefSeq Size:	<p>4117 bp</p>
RefSeq ORF:	<p>3297 bp</p>
Locus ID:	<p>20467</p>
UniProt ID:	<p>Q62141</p>
Cytogenetics:	<p>8 35.08 cM</p>
Gene Summary:	<p>Acts as a transcriptional repressor. Interacts with MXI1 to repress MYC responsive genes and antagonize MYC oncogenic activities. Interacts with MAD-MAX heterodimers by binding to MAD. The heterodimer then represses transcription by tethering SIN3B to DNA. Also forms a complex with FOXK1 which represses transcription. With FOXK1, regulates cell cycle progression probably by repressing cell cycle inhibitor genes expression (PubMed:22476904). [UniProtKB/Swiss-Prot Function]</p>