

## Product datasheet for **MG220992**

### **Dbn1 (NM\_001177371) Mouse Tagged ORF Clone**

#### **Product data:**

Product Type:	Expression Plasmids
Product Name:	Dbn1 (NM_001177371) Mouse Tagged ORF Clone
Tag:	TurboGFP
Symbol:	Dbn1
Mammalian Cell Selection:	Neomycin
Vector:	pCMV6-AC-GFP (PS100010)
E. coli Selection:	Ampicillin (100 ug/mL)



[View online »](#)

ORF Nucleotide  
Sequence:

>MG220992 representing NM\_001177371  
Red=Cloning site Blue=ORF Green=Tags(s)

TTTTGTAATACGACTCACTATAGGGCGGCCGGAATTCGTCGACTGGATCCGGTACCGAGGAGATCTGCC  
GCC**CGCATCGCC**

ATGGCCGGCGTCAGCTTCAGCGCCACCGCTGGAGCTGTGGCGGCGTACGAGGAGGTGATCCGGGAGG  
AGAGCGCAGCCGACTGGGCTCTGTACACATACGAGGATGGCTCAGATGACCTCAAGCTTGCAGCGTCAGG  
AGAAGGGGGCTTGCAGGAGCTTCCGGCCACTTCGAGAACCAGAAAGTATGATGATGGTTTCTGCAGCGTC  
AAGGACTCCCAAGCTGCCCTGCCAAAATATGTGCTCATCAACTGGGTTGGTGAGGATGTGCCTGATGCC  
GAAAATGTGCTTGCAGCAGTGTGTGGCCAAGGTGGTGAATTCTCCAGGGTGTGATGTCATTGTGAA  
TGCCAGCAGTGTGAAGACATCGATGCTGGTGCCATTGGGAGCGGCTCTCCAATGGACTGGCACGGCTC  
TCCAGCCAGTATTGCACCGCTGCGCCTTCGGGAGGATGAAAATGCTGAACCGTGGGTACCACCTACC  
AGAAGACGGATGCAGCAGTGGAGATGAAGCGGATTAACCGTGAGCAGTTTTGGGAGCAGGCCAAGAAGGA  
GGAAGAGCTGCGGAAGGAGGAGGAGCGGAAGAAGGCTCTGGACGCCAGGCTCAGGTTTGAACAGGAACGG  
ATGGAGCAGGAGCGGCAGGAGCAGGAAGAAGCTGAGCGGCGCTACCGGGAGCGGGAGCAGCAGATTGAGG  
AGCACAGGAGGAAACAGCAGAGTCTGGAAGCTGAAGAAGCCAAGAGGAGGTTAAAGGAGCAGTCTATCTT  
TGGTGACCAGCGGGATGAAGAGGAAGAGTCCCAGATGAAGAAGTCGGAGTCAGAGGTGGAGGAGCGGCT  
GCCATCATTGCCAGCGGCTGATAACCCACGGGAGTTCTTCAGACAGCAGGAACGAGTGGCATCGGCT  
CTGGTGGCAGCTGTGACGCGCTGCGCCTGCACCTTCAACCACCGACCAGGTGCTCCGACTGCCCTTT  
CATAAAGGCATCGGACAGTGGGCCTTCTCCTCCTCCTCCTCCTCCTCCTCCTCCTCCTCCTCCTCCTCCT  
CCCTATATCACCTGCCACCGCACCCCAACCTCTCTTCTCCTCCTCCTCCTCCTCCTCCTCCTCCTCCTCCT  
GGAGGATGGCACCCACTCCTATTCCACCCGGAGCCCATCTGATTCAGCACAGCCTTACCCCATCGC  
TGAGCAGATCGAGAGGGCCCTGGATGAGGTCACATCCTCGCAGCCTCCACCTCCACCTCCACCCACTCCA  
CCAACCTCAAGAGGCCAGGAGACTACCCCAAGCCTGGATGAAGAGCTCAGCAAGGAGGCCAAAGTAAACAG  
CAGCTCCTGAGGTCTGGGCTGGCTGTGCGGCAGAGCCCCCTCAGGCACAGGAACCTCCCCTGTTGCAAAG  
CAGCCCCCTGGAGGACTCGATGTGCACAGAATCTCCAGAGCAGGCTGCCCTGGCTGCCCTGCGGAGCCT  
GCTGCCTCTGTCACCTCAGTAGCTGATGTCATGCAGCTGACACCATTGAGACCACCACTGCCACTACTG  
ACACCATTATTGCCAACACGTCACCCCTGCCGCTGCCAGCCTCATTGATCTATGGCCTGGCAACGGGGA  
AGAGGCCCTCAACACTTCAGGCTGAACCCAGGGTGCCACACCACCCTCAGGTGCTGAGGCCTCCCTGGCA  
GAGGTGCCCTGTGAATGAGGCCGCTCAGGAGCCGCTGCCGCCGTAGGCGAAGGCTGTGCTAACCTTC  
TTAATTTTGATGAGCTGCCAGAACCTCCAGCCACCTTCTGTGACCCAGAGGAGGAAGTAGGAGAAACGCT  
GGCTGCCTCCCAGGTCTAACTATGCCCTCAGCTCTAGAGGAGGTAGATCAGGTGCTGGAGCAGGAGCTG  
GAGCCAGAACCTCACCTGCTGACCAATGGAGAGACCCTCAAAAGGAGGGGAGCCAGGCCAGCGAAGGAT  
ACTTCAGTCAGTCACAGGAGGAAGAGTTCGCCCAATCAGAAGAGCCATGTGCAAAGGTTCCGCCTCCTGT  
ATTTTACAACAAGCCTCCAGAAATCGACATCACCTGCTGGGATGCAGACCCAGTTCTGAAGAGGAAGAG  
GGCTTCGAGGGTGGTGAT

**ACGCGT**ACGCGGCCGCTCGAG - GFP Tag - GTTTAA

**Protein Sequence:** >MG220992 representing NM\_001177371  
 Red=Cloning site Green=Tags(s)

```
MAGVSFSGHRLELLAAYEEVIREESAADWALYTYEDGSDDLKLAASGEGGLQELSGHFENQKVMYGFCSV
KDSQAALPKYVLINWVGEDVPDARKCACASHVAKVAEFFQGVDIVNASSVEDIDAGAIGQRLSNGLARL
SSPVLHRLRLREDENAEPVGTTYQKTDAAVEMKRINREQFWEQAKKEEELRKEEERKKALDARLRFEQER
MEQERQEERERRREREREQQIEEHRRKQQSLEAEEAKRRLKEQSIFGDQRDEEEESQMKKSESEVEEAA
AIIAQRPDNPREFFRQQERVASASGGSCDAPAPAPFNHRPGRPYCPF IKASDSGPSSSSSSSSPPRTPF
PYITCHRTPNLSSSLPCSHLDSHRRMAPTPIPTRSPSDSSTASTPIAEQIERALDEVTSQPPPPPPPP
PTQEAQETTPSLDEELSKEAKVTAPEVWAGCAAEPQAQEPPLLQSSPLEDSMCTESPEQAALAAPAE
AASVTSVADVHAADTIETTTATDTTIANNVTPAAASLIDLWPGNGEEASTLQAEPRVPTPPSGAEASLA
EVPLLNEAAQEPLPPVGEKANLLNFDELPEPPATFCDPPEEVGETLAASQVLTMPALEEVDQVLEQEL
EPEPHLLTNGETTQKEGTQASEGYFSQSQEEFAQSEEPCAKVPPPVFYNKPPEIDITCWDADPVPEEEE
GFEGGD
```

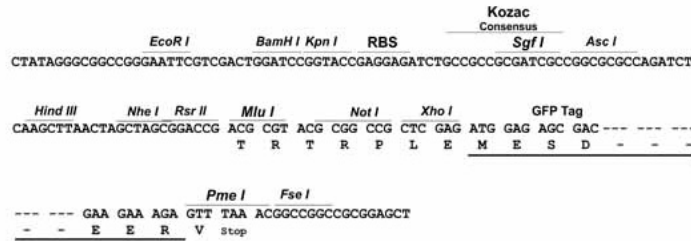
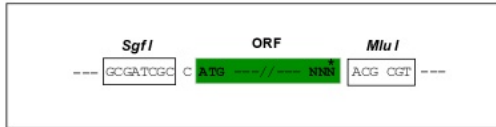
TRTRPLE - GFP Tag - V

**Restriction Sites:**

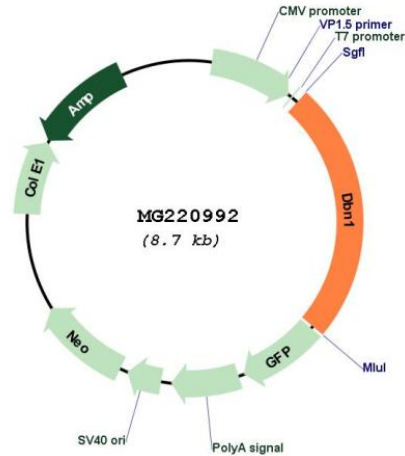
SgfI-MluI

**Cloning Scheme:**

Cloning sites used for ORF Shutting:



## Plasmid Map:



ACCN: NM\_001177371

ORF Size: 2118 bp

OTI Disclaimer: The molecular sequence of this clone aligns with the gene accession number as a point of reference only. However, individual transcript sequences of the same gene can differ through naturally occurring variations (e.g. polymorphisms), each with its own valid existence. This clone is substantially in agreement with the reference, but a complete review of all prevailing variants is recommended prior to use. [More info](#)

OTI Annotation: This clone was engineered to express the complete ORF with an expression tag. Expression varies depending on the nature of the gene.

Components: The ORF clone is ion-exchange column purified and shipped in a 2D barcoded Matrix tube containing 10ug of transfection-ready, dried plasmid DNA (reconstitute with 100 ul of water).

Reconstitution Method:

1. Centrifuge at 5,000xg for 5min.
2. Carefully open the tube and add 100ul of sterile water to dissolve the DNA.
3. Close the tube and incubate for 10 minutes at room temperature.
4. Briefly vortex the tube and then do a quick spin (less than 5000xg) to concentrate the liquid at the bottom.
5. Store the suspended plasmid at -20°C. The DNA is stable for at least one year from date of shipping when stored at -20°C.

RefSeq: [NM\\_001177371.1](#), [NP\\_001170842.1](#)

RefSeq Size: 3044 bp

RefSeq ORF: 2121 bp

Locus ID: 56320

UniProt ID: [Q9QXS6](#)

Cytogenetics: 13 30.06 cM

**Gene Summary:** Actin cytoskeleton-organizing protein that plays a role in the formation of cell projections (By similarity). Required for actin polymerization at immunological synapses (IS) and for the recruitment of the chemokine receptor CXCR4 to IS (By similarity). Plays a role in dendritic spine morphogenesis and organization, including the localization of the dopamine receptor DRD1 to the dendritic spines (PubMed:25865831). Involved in memory-related synaptic plasticity in the hippocampus (PubMed:25865831).[UniProtKB/Swiss-Prot Function]