

Product datasheet for **MG220976**

Mid1 (NM_183151) Mouse Tagged ORF Clone

Product data:

Product Type:	Expression Plasmids
Product Name:	Mid1 (NM_183151) Mouse Tagged ORF Clone
Tag:	TurboGFP
Symbol:	Mid1
Synonyms:	61B3-R; DXHXS1141; Fxy; Trim18
Mammalian Cell Selection:	Neomycin
Vector:	pCMV6-AC-GFP (PS100010)
E. coli Selection:	Ampicillin (100 ug/mL)



[View online »](#)

ORF Nucleotide
Sequence:

>MG220976 representing NM_183151
Red=Cloning site Blue=ORF Green=Tags(s)

TTTTGTAATACGACTCACTATAGGGCGGCCGGAATTCGTCGACTGGATCCGGTACCGAGGAGATCTGCC
GCC**CGGATCGCC**

ATGGAACACTGGAGTCGGAGTGACCTGTCTATTTGTCTGGAGCTTTTGGAGACCTCTCTGCTTC
CCTGCGCACATAGCCTCTGCTTCAACTGTGCCACCGAATCCTGGTCTCTCACTGTGCCACCAACGAGCC
TGTGGAGTCCATCAACGCCTTCCAGTGCCCCACCTGCCGGCATGTCATCACGCTCAGCCAGCGAGGTCTA
GACGGGCTCAAGCGCAACGTCACCCTCCAAAACATCATTGACAGATTTAGAAAAGCATCTGTGAGCGGGC
CCAACCTCTCCAGTGAGACCCGAGGGAACGGGCTTTGACGCCAACACCATGTCCTCTGCCGAGAAGGT
TCTCTGCCAGTTCTGTGACCAGGATCCTGCCAGGATGCTGTGAAGACTTGCGTTACTTGTGAAGTGTC
TACTGTGATGAGTGCCTGAAAGCCACTCATCCGAACAAGAAGCCCTTTACAGGCCATCGTCTGATTGAGC
CAATCCCGGACTCGACATCCGGGGCTGATGTGCCTGGAGCACGAGGATGAGAAGGTGAATATGTACTG
TGTGACCGATGACCAGTTAATCTGTGCCTTGTGTAACCTGGTTGGCGGCACCGCATCATCAGGTGGCA
GCTTTGAGTGAGCGCTATGACAAATTGAAGCAAACTTGAGAGTAATCTCACCATCTTATTAAGAGAA
ACACAGAACTGGAGACTCTTTGGCTAAACTCATCCAACTTGTCAACATGTTGAAGTCAATGCATCCCG
TCAAGAAGCCAACTGACAGAAGAATGTGATCTTCTCATTGAAATCATTAGCAACGAAGACAAATATT
GGAACAAAGATTAAGAAGGCAAGGTGATCAGGCTCCGCAAGTTAGTCAAGCAGATTGCAAACTGTAAC
AGTGCCTTGAGAGGTCTGCATCGCTCATCTCGCAAGCGGAGCACTCGTGAAGGAAAATGACCACGCCCC
TTTTCTACAGACAGCAAGAATATCACTGAGAGAGTCTCCATGGCAACTGCATCTCCAGGTCTAATT
CCCGAAATCAACCTCAATGACACGTTTGACACTTTTGCCTTGGATTTTCCCGGGAGAAGAACTGCTAG
AATGCTGGATTACCTAACAGCTCCCAACCTCCCGCGATTAGAGAAGAGCTCTGCACCGCTTCTTACGA
CACCATCACCGTCCACTGGACCTCAGAGGACGAGTTTACGCGTGGTCTCCTACGAGCTCCAGTACACCATA
TTCACCGGACAAGCCAATGTTGTCAACGTGGCCTGTGACGGCACCTGTCTCCTCGGCTCCGAGGTCTGT
GTAACCTGGCGGACAGCTGGATGATCGTGCCCAACATCAAGCAGAACCACTACACCGTGCACGGCCTGCA
AAGTGGCACCAAGTATATCTTACGGTGAAGGCCATCAACCAGGCGGGCAGCCGTAGCAGCGAGCCCGGA
AAGCTGAAGACCAACAGTCAGCCGTTTACTGGATCCCAATCGGCTCATCGCAAGCTGAAGGTGTCCC
ACGACAACCTGACTGTGAGCGGACGAGTCTCCTTAAGAAGAGTACGCGCCGGAGCGCTTCGCTGG
TCAGGGGAGCTACGGAGTGGCTGGCAACGTGTTTCATCGACAGCGCCGTCCTACTGGGAAGTGGTCACC
AGCGGAAGCACATGGTACGCCATCGGCCTGGCGTACAGATCGGCGCCGAAACACGAGTGGATCGGGAAGA
ACGCGGGCTCCTGGGCCCTCTGCCGCTGCCACAACCACTGGGCGGTGCGACACGAGCGCAAGGAGACCCC
CATCGCGCCGGCCCTCACCTCAGGCGCGTCCGGCTCCTGCTGGACTACGACAACGGCTCCATCGCCTTC
TACGACGCTCTGAGCTCCGTCCACCTCCACACCTTCCACGCGGCGCTCGCGCAGCCCGTGTGCCCACT
TCACCGTGTGGAACAAGTGTCTGACCATCGTCACGGGTCTGCCATCCCGGACCATCTGGACTGTACGGA
GCAGCGACCT

ACGCGTACGCGGCCGCTCGAG - GFP Tag - GTTTAA

Protein Sequence: >MG220976 representing NM_183151
 Red=Cloning site Green=Tags(s)

METLESELTCPICLELFEDPLLLPCAHSFCFNCAHRILVSHCATNEPVESINAFQCPTCRHVITLSQRGL
 DGLKRNVTLQNIIDRFQKASVSGPNPSETRRERAFDANTMSSAEKVLQFCDQDPAQDAVKTCVTCVTS
 YCDECLKATHPNKKPFTGHRLIEPIPDSHIRGLMCLHEHEDEKVNMYCVTDDQLICALCKLVGRHRDHQVA
 ALSERYDKLKQNLNSLNLIKRNTLETLLAKLIQTCQHVEVNASRQEAKLTEECDLLIEIIQRRQII
 GTKIKEGKVIRLRKLAQQIANCKQCLERSASLISQAEHSLKENDHARFLQTAKNITERVSMATASSQVLI
 PEINLNDTFDFALDFSREKKLLECLDYLTAPNPPAIREELCTASYDTITVHWTSEDEF SVVSYELQYTI
 FTGQANVNVACDGTCLLGSAGLCNSADSWMIVPNIKQNHVTVHGLQSGTKYIFTVKAINQAGRSSEPG
 KLKTN SQPFRLDPKSAHRKLVSHDNL TVERDESSSKSHAPERFAGQGSYGVAGNVFIDSGRHYWEVVT
 SGTWYAIGLAYRSAPKHEWIGKNAASWALCRCHNHAVRHDGKETPIAPAPHLRRVGVLLDYDNGSIAF
 YDALSSVHLHTFHAALAQVPCPTFTVWNKCLTIVTGLPIPDLDCTEQRP

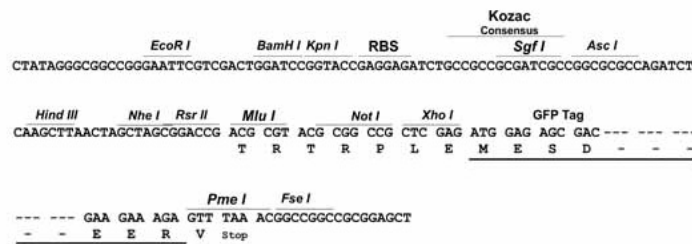
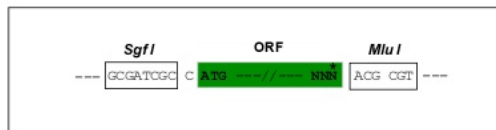
TRTRPLE - GFP Tag - V

Chromatograms: https://cdn.origene.com/chromatograms/ja1480_f05.zip

Restriction Sites: SgfI-MluI

Cloning Scheme:

Cloning sites used for ORF Shuttling:

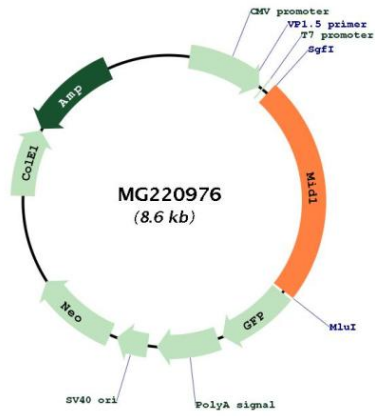


ACCN: NM_183151

ORF Size: 2040 bp

OTI Disclaimer:	<p>Due to the inherent nature of this plasmid, standard methods to replicate additional amounts of DNA in E. coli are highly likely to result in mutations and/or rearrangements. Therefore, OriGene does not guarantee the capability to replicate this plasmid DNA. Additional amounts of DNA can be purchased from OriGene with batch-specific, full-sequence verification at a reduced cost. Please contact our customer care team at custsupport@origene.com or by calling 301.340.3188 option 3 for pricing and delivery.</p> <p>The molecular sequence of this clone aligns with the gene accession number as a point of reference only. However, individual transcript sequences of the same gene can differ through naturally occurring variations (e.g. polymorphisms), each with its own valid existence. This clone is substantially in agreement with the reference, but a complete review of all prevailing variants is recommended prior to use. More info</p>
OTI Annotation:	This clone was engineered to express the complete ORF with an expression tag. Expression varies depending on the nature of the gene.
Components:	The ORF clone is ion-exchange column purified and shipped in a 2D barcoded Matrix tube containing 10ug of transfection-ready, dried plasmid DNA (reconstitute with 100 ul of water).
Reconstitution Method:	<ol style="list-style-type: none"> 1. Centrifuge at 5,000xg for 5min. 2. Carefully open the tube and add 100ul of sterile water to dissolve the DNA. 3. Close the tube and incubate for 10 minutes at room temperature. 4. Briefly vortex the tube and then do a quick spin (less than 5000xg) to concentrate the liquid at the bottom. 5. Store the suspended plasmid at -20°C. The DNA is stable for at least one year from date of shipping when stored at -20°C.
RefSeq:	NM_183151.1 , NP_898974.1
RefSeq Size:	3974 bp
RefSeq ORF:	2043 bp
Locus ID:	17318
Cytogenetics:	X 79.19 cM
Gene Summary:	Has E3 ubiquitin ligase activity towards IGBP1, promoting its monoubiquitination, which results in deprotection of the catalytic subunit of protein phosphatase PP2A, and its subsequent degradation by polyubiquitination.[UniProtKB/Swiss-Prot Function]

Product images:



Circular map for MG220976