

Product datasheet for **MG220968**

Chkb (NM_007692) Mouse Tagged ORF Clone

Product data:

Product Type:	Expression Plasmids
Product Name:	Chkb (NM_007692) Mouse Tagged ORF Clone
Tag:	TurboGFP
Symbol:	Chkb
Synonyms:	Chetk; Chkl; Ck; Ck/Ek; Ck/Ek-beta; Ckb; Ckekb; Ek
Mammalian Cell Selection:	Neomycin
Vector:	pCMV6-AC-GFP (PS100010)
E. coli Selection:	Ampicillin (100 ug/mL)
ORF Nucleotide Sequence:	>MG220968 representing NM_007692 Red=Cloning site Blue=ORF Green=Tags(s)

TTTTGTAATACGACTCACTATAGGGCGGCCGGAATTCGTCGACTGGATCCGGTACCGAGGAGATCTGCC
GCC**CGATCGCC**

ATGGCGGCAGACGGGACAGGGGTAGTCGGAGGAGGGGCTGTCGGCGCGGCCTGCCAAGGACGGTTTGC
AGGATGCTAAGTGCCAGAGCCAATCCCAATCGGCGGCGCTTCTCGCTGTCCCGTGACGCGCAGCG
CCGAGCCTATCAGTGGTCCGGGAGTACCTGGGCGGGCCTGGCGCCGAGCGGCGCGGAGGAGCTGAGC
GTTTGTCCCGTGAGCGGAGGCCTCAGCAACCTGCTCTTCCGATGCTCACTACCGAACCACGTACCCAGTG
TGGGCGGGAGCCCCGGGAGGTGCTGCTACGACTCTACGGGCCATCCTGCAGGGGTAGACTCCTTGGT
ATTAGAAAGCGTGATGTTCCGCAATCTCGCAGAGCGGTCTTAGGGCCCCAGCTTACGGAGTGTTCCA
GAGGGCCGCTTGAACAGTACCTCCAAGCCGGCCTGAAAACCTCAAGAGCTCCGGGACCCAGTGTGT
CGGGAGCCATTGCAACGAGGATGGCCCGTTTCCATGGTATGGAGATGCCCTTCACTAAGGAGCCCCGATG
GTTGTTGGGACCATGGAGCGGTACCTGAAGCAGATCCAGGACTTGCCTTCCACCAGCCTTCCCCAGATG
AACCTGGTAGAGATGTACAGCCTCAAGGACGAGATGAACAGCCTCAGGAAGTTACTAGACGATACCCCGT
CACCAGTGGTCTTCTGCCACAATGACATCCAGGAAGGAACATCTTGTGCTTTCAGAGCCAGACAGTGA
TGATAACCTCATGTTGGTTGATTTTGGTACAGTAGTTATAACTACAGGGGCTTTGACATTGGGAATCAT
TTTTGTGAGTGGGTTTATGATTACTTATGAAGAATGGCCTTTCTACAAAGCAAGACCCAGGACTACC
CCACTAGAGAACAGCAGCTCCATTTTATTCGCCATTATCTGGCAGAGGTTTCAAGAGGTTGAGATCCCTCTC
CGAAGAGGAACAGAAGAACGGGAAGAAGAATTGCTGCTAGAGATCAGTCGGTACTCCCTGGCATCTCAC
TTTTTCTGGGTCTGTGGTCCACCCTGCAGGCTTCGATGTCCACTATAGAGTTCCGGCTACTTGGAGTATG
CCCAATCTCGGTTCCAGTCTACTTCCAGCAGAAGGGCCAGTGACGAGTTCCCCATCATCC

ACCGTACGCGGCCGCTCGAG - GFP Tag - GTTTAA



[View online »](#)

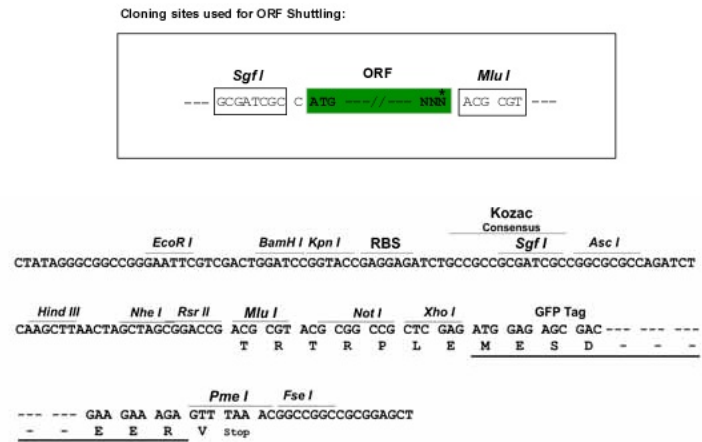
Protein Sequence: >MG220968 representing NM_007692
Red=Cloning site Green=Tags(s)

MAADGTGVVGGGAVGGGLPKDGLQDAKCEPIPNNRRASSLSRDAQRRAYQWCREYLGGAWRRARPEELS
VCPVSGGLSNLLFRCSLPNHVPSVGGEPREVLRLRYGAILQGVDSLVLSEVMFAILAERSLGPQLYGVFP
EGRLEQYLPSRPLKTQELRDPVLSGAIATRMARFHGMEMPFTKEPRWLFMTERYLKQIQDLPSTSLPQM
NLVEMYSLKDEMNSLRKLLDDTPSPVVFCHNDIQEGNILLSEPDSDDNMLVDFEYSSYNYRGFDIGNH
FCEWVYDYTYEEWPFYKARPTDYPTREQLHFIRHYLAEVQKGEILSEEEQKKREEELLLLEISRYSLASH
FFWGLWSTLQASMSTIEFGYLEYAQSRFQFYFQQKQLTSSPSS

TRTRPLE - GFP Tag - V

Restriction Sites: SgfI-MluI

Cloning Scheme:



ACCN: NM_007692

ORF Size: 1182 bp

OTI Disclaimer: The molecular sequence of this clone aligns with the gene accession number as a point of reference only. However, individual transcript sequences of the same gene can differ through naturally occurring variations (e.g. polymorphisms), each with its own valid existence. This clone is substantially in agreement with the reference, but a complete review of all prevailing variants is recommended prior to use. [More info](#)

OTI Annotation: This clone was engineered to express the complete ORF with an expression tag. Expression varies depending on the nature of the gene.

Components: The ORF clone is ion-exchange column purified and shipped in a 2D barcoded Matrix tube containing 10ug of transfection-ready, dried plasmid DNA (reconstitute with 100 ul of water).

Reconstitution Method:

1. Centrifuge at 5,000xg for 5min.
2. Carefully open the tube and add 100ul of sterile water to dissolve the DNA.
3. Close the tube and incubate for 10 minutes at room temperature.
4. Briefly vortex the tube and then do a quick spin (less than 5000xg) to concentrate the liquid at the bottom.
5. Store the suspended plasmid at -20°C. The DNA is stable for at least one year from date of shipping when stored at -20°C.

RefSeq: [NM_007692.6](#), [NP_031718.1](#)

RefSeq Size: 1707 bp

RefSeq ORF: 1185 bp

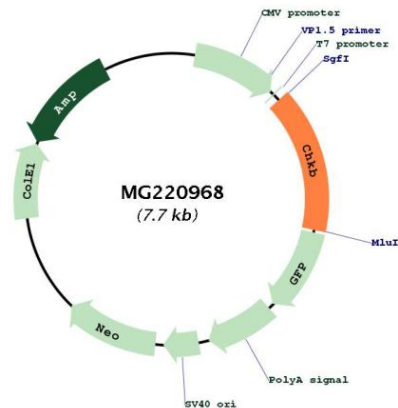
Locus ID: 12651

UniProt ID: [O55229](#)

Cytogenetics: 15 E3

Gene Summary: Has a key role in phospholipid metabolism, and catalyzes the first step of phosphatidylethanolamine and phosphatidylcholine biosynthesis.[UniProtKB/Swiss-Prot Function]

Product images:



Circular map for MG220968