

## Product datasheet for **MG220907**

### **Ampd1 (NM\_001033303) Mouse Tagged ORF Clone**

#### **Product data:**

Product Type:	Expression Plasmids
Product Name:	Ampd1 (NM_001033303) Mouse Tagged ORF Clone
Tag:	TurboGFP
Symbol:	Ampd1
Synonyms:	AI553520; Ampd-1
Mammalian Cell Selection:	Neomycin
Vector:	pCMV6-AC-GFP (PS100010)
E. coli Selection:	Ampicillin (100 ug/mL)



[View online »](#)

**ORF Nucleotide Sequence:**

>MG220907 representing NM\_001033303  
 Red=Cloning site Blue=ORF Green=Tags(s)

TTTTGTAATACGACTCACTATAGGGCGGCCGGGAATTCGTCGACTGGATCCGGTACCGAGGAGATCTGCC  
 GCC**CGGATCGCC**

ATGCCTCTATTCAAACAACTAACAGGTCAAGGAAAACAAATTGATGATGCAATGCGTAGCTTTGCTGAAAAAG  
 TGTTTGCCTCTGAAGTCAAAGATGAGGGAGGTCGGCACGAGATCTCCCCCTTCGACGTGGATGAGATCTG  
 CCCAATTTCCCTTCATGAGATGCAGGCCACATATTCCACATGGAGAACCTGTCCATGGATGGCAGGAGA  
 AAAAGGCGTTTCCAAGGACGGAAGACTGTTAATTTGCCATTCCACAAAGTGAACATCTTCTACCAAAC  
 TGTCACCATCGAAGAATTTATTTCTTCATCCCCAACCTACGAGAGTGTGCCTGACTTCCAGAGGGTGCA  
 GATCACTGGAGACTATGCCTCGGGGTAACCGTTGAAGACTTTGAGGTGGTTTGTAAAGGTCTCTATCGG  
 GCATTGTGTATACGAGAGAAATACATGCAGAAGTCATTCCAGAGGTTCCCAAGACCCCCCTCAAGTACT  
 TGAGGAACATTGATGGCGAAGCCTTGGTAGGAAACGAGAGCTTCTACCCAGTATTTACCCCTCCTCCGAA  
 GAAGGGTGAAGACCCCTTTCGCACAGAGGACCTTCTGCAAACCTGGGCTATCACCTCAAGATGAAAGCT  
 GGTGTGATTTACATCTACCCTGATGAAGCGGCAGCCAACAGAGATGAGCCCAAGCCCTACCCCTACCCAA  
 ATCTGGATGACTTCTGGATGACATGAATTTTTGCTTGCTCTAATTGCAACAAGGCGCTGTTAAGACTTA  
 TGCTCACCGCGCCTGAAGTTCCTCCTCCAAGTTCAGGTCCATCAGATGCTCAACGAGATGGATGAG  
 CTGAAGGAGCTGAAGAACAACCCCAACCGGGACTTTTATAACTGCAGGAAGGTGGATACTCACATCCATG  
 CAGCTGCCTGCATGAACCAAGACCTGCTGCGCTTCATTAAGAAATCTTACCATTGACGCCGACAG  
 GGTGGTCTACAGCACTAAAGAGAAGAGCCTGACTCTGAAGGAACTTTTGCTAAGTTGAATATGCATCCC  
 ATGACCAATAACAATCCCGTGGTGCAAGTGAGCTTCGGGACCTTACCTAAAAACAGACAACATACATTA  
 TGGGGAGTATTTTGCCTACTATCAAGGAGGTGGGTGCAGACCTGGTGGAGGCCAAGTATCAGCATGCA  
 GAGCCTCGCTTATCCATCTACGGTCGCAGTCCAGATGAGTGAACAACCTCTCCTCTTGGTTTGTCTGCA  
 ATCGCATCTATTGCCCAACATGACGTGGATGATCCAGGTCCCCAGGATCTATGATGTGTTCCGATCCAA  
 GAATTTCTGCCACACTTCGAAAGATGCTGGAGAATATTTTCTTCCAGTGTGGAGGCCACCATCAAC  
 CCCAAGCTCACCCAGACCTCAGTGTCTCCTCAAGCACATCACTGGCTTTGACAGTGTGGATGATGAAT  
 CCAAACACAGTGGTCACATGTTTTCTCCAAGAGTCCCAAACCGAGGAGTGGACAATGGAAAACAACCC  
 GTCTTACTTACTATGCCTACTACATGTATGCAAACATCACGGTCTCAACAGCCTGAGAAAGGAACGA  
 GGCATGAATACATTTCTGTTTCGTCCTCCACTGTGGGGAGGCTGGGGCTCTCACTCACCTCATGACAGCCT  
 TCATGATAGCAGACAATATTTCTCATGGACTGAATTTAAAGAAGAGTCTGTGCTACAGTACTGTTTTT  
 CCTAGCCCAGATTTCCATCGCCATGTCACCGCTGAGTAACAACAGTCTGTTCTCGAATATGCAAAGAAT  
 CCTTTCTTAGATTTCTCCAGAAAGGCCTGATGATCTCACTGTCGACCGATGACCCGATGCAAGTTCCT  
 TCACCAAGGAGCCCTGATGGAAGAATACGCCATCGCTGCGCAAGCTTCAAGCTGAGCAGTGTGACAT  
 GTGTGAGGTGGCAAGGAACAGTGTCTGCAAGTGTGGGATTTCTCATGAGGAAAAAGCAAAGTTTCTGGGC  
 AACAATTACCTTGAGGAAGGCCCTGTTGGAAATGACATCCGGAGGACAAATGTCGCTCAGATTCGCATGG  
 CCTATCGTTATGAACTTGGTGTATGAACTCAATTTAATTGCTGAGGGTCTTAAAGCAACAGAA

**ACGCGTACGCGGCCGCTCGAG** - GFP Tag - GTTTAA

**Protein Sequence:** >MG220907 representing NM\_001033303  
 Red=Cloning site Green=Tags(s)

MPLFKLTGQGKQIDDAMRSFAEKVFASEVKDEGGRHEISPFVDVEICPISLHEMQAHIFHMENLSMDGRR  
 KRRFQGRKTVNLSIPQSETSSTKLSHIEEFISSPTYESVPDFQRVQITGDYASGVTVEDFEVVKGLYR  
 ALCIREKYMQKSFQRFPKTPSKYLNRNIDGELVGNESFYVPVTPPPKKGEDPFRTEDELPANLGYHLKMKKA  
 GVIYIYPDEAAANRDEPKPYYPNLDDFLDDMNFLALIAQGPVKTYAHRRLKFLSSKFQVHQMLNEMDE  
 LKELKNNPHRDFYNCRKVDTHIHAAACMNQKHLRLRFIKKSYHIDADRVVYSTKEKSLTLKELFAKLNMPH  
 YDLTVDSLVDHAGRQTFQRDFKFNPKYNPVGASELRLDLYLKTNDYINGEYFATIIEVADLVEAKYQHA  
 EPRLSIYGRSPDEWNKLSWFVFNRIYCPNMTWMIQVPRIYDVFRSKNFLPHFGKMLENIFLPVFEATIN  
 PQAHPDLSVFLKHITGFDSVDDESKHSGHMFSSKSPKPEEWTMENNPSTYTYAYMYANITVLSNRKER  
 GMNTFLFRPHCGEAGALTHLMTAFMIADNISHGLNKKSPVLQYLFFLAQIPIAMSPLSNNSLFLEYAKN  
 PFLDFLQGLMISLSTDDPMQFHFTKEPLMEEYATAAQVFKLSTCDMCEVARNVLCQGISHEEKAKFLG  
 NNYLEEGPVGNDIRRTNVAQIRMAVRYETWCYELNLIAEGLKATE

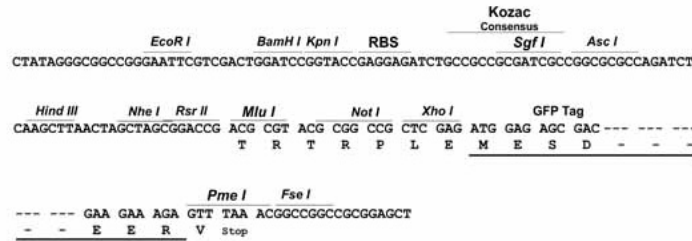
TRTRPLE - GFP Tag - V

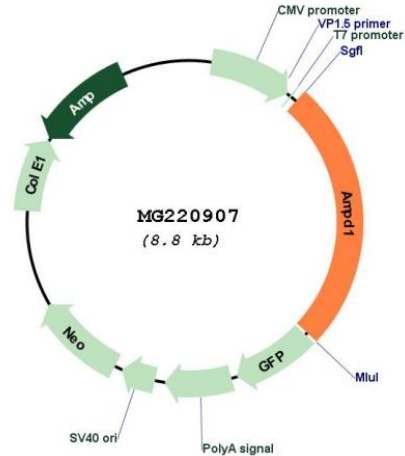
**Restriction Sites:**

Sgfl-MluI

**Cloning Scheme:**

Cloning sites used for ORF Shutting:



**Plasmid Map:**


**ACCN:** NM\_001033303

**ORF Size:** 2235 bp

**OTI Disclaimer:** The molecular sequence of this clone aligns with the gene accession number as a point of reference only. However, individual transcript sequences of the same gene can differ through naturally occurring variations (e.g. polymorphisms), each with its own valid existence. This clone is substantially in agreement with the reference, but a complete review of all prevailing variants is recommended prior to use. [More info](#)

**OTI Annotation:** This clone was engineered to express the complete ORF with an expression tag. Expression varies depending on the nature of the gene.

**Components:** The ORF clone is ion-exchange column purified and shipped in a 2D barcoded Matrix tube containing 10ug of transfection-ready, dried plasmid DNA (reconstitute with 100 ul of water).

**Reconstitution Method:**

1. Centrifuge at 5,000xg for 5min.
2. Carefully open the tube and add 100ul of sterile water to dissolve the DNA.
3. Close the tube and incubate for 10 minutes at room temperature.
4. Briefly vortex the tube and then do a quick spin (less than 5000xg) to concentrate the liquid at the bottom.
5. Store the suspended plasmid at -20°C. The DNA is stable for at least one year from date of shipping when stored at -20°C.

**RefSeq:** [NM\\_001033303.2](#), [NP\\_001028475.2](#)

**RefSeq Size:** 2342 bp

**RefSeq ORF:** 2238 bp

**Locus ID:** 229665

UniProt ID: [Q3V1D3](#)  
Cytogenetics: 3 45.25 cM  
Gene Summary: AMP deaminase plays a critical role in energy metabolism.[UniProtKB/Swiss-Prot Function]