

Product datasheet for **MG220874**

Polr2l (NM_025593) Mouse Tagged ORF Clone

Product data:

Product Type: Expression Plasmids
Product Name: Polr2l (NM_025593) Mouse Tagged ORF Clone
Tag: TurboGFP
Symbol: Polr2l
Synonyms: 2510029B14Rik
Mammalian Cell Selection: Neomycin
Vector: pCMV6-AC-GFP (PS100010)
E. coli Selection: Ampicillin (100 ug/mL)
ORF Nucleotide Sequence: >MG220874 representing NM_025593
Red=Cloning site **Blue**=ORF **Green**=Tags(s)

TTTTGTAATACGACTCACTATAGGGCGCCGGGAATTCGTCGACTGGATCCGGTACCGAGGAGATCTGCC
GCC**CGATCGCC**

ATGATCATCCCGGTGCGCTGCTTACCTGCGGGAAGATCGTCGGCAACAAATGGGAAGCCTACCTGGGTC
TGCTGCAGGCCGAGTACACGGAGGGGATGCCCTGGACGCTCTGGGCCTAAAGCGCTACTGCTGCCGCCG
CATGCTGTAGCACACGTGGACCTGATTGAGAAGCTGCTGAACATGCACCCCTAGAGAAG

ACGCGTACGCGGCCGCTCGAG - GFP Tag - GTTTAA

Protein Sequence: >MG220874 representing NM_025593
Red=Cloning site **Green**=Tags(s)

MIIPVRCFTCGKIVGNKWEAYLGLLQAEYTEGDALDALGLKRYCCRRMLLAHVDLIEKLLNYAPLEK

TRTRPLE - GFP Tag - V

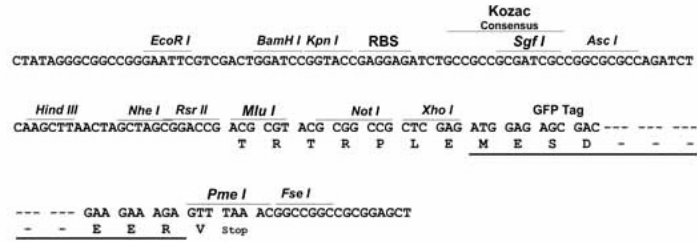
Restriction Sites: Sgfl-Mlul



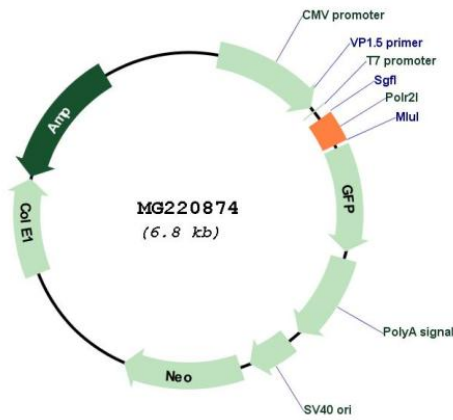
[View online »](#)

Cloning Scheme:

Cloning sites used for ORF Shutting:



Plasmid Map:



ACCN: NM_025593
ORF Size: 201 bp

OTI Disclaimer:	The molecular sequence of this clone aligns with the gene accession number as a point of reference only. However, individual transcript sequences of the same gene can differ through naturally occurring variations (e.g. polymorphisms), each with its own valid existence. This clone is substantially in agreement with the reference, but a complete review of all prevailing variants is recommended prior to use. More info
OTI Annotation:	This clone was engineered to express the complete ORF with an expression tag. Expression varies depending on the nature of the gene.
Components:	The ORF clone is ion-exchange column purified and shipped in a 2D barcoded Matrix tube containing 10ug of transfection-ready, dried plasmid DNA (reconstitute with 100 ul of water).
Reconstitution Method:	<ol style="list-style-type: none">1. Centrifuge at 5,000xg for 5min.2. Carefully open the tube and add 100ul of sterile water to dissolve the DNA.3. Close the tube and incubate for 10 minutes at room temperature.4. Briefly vortex the tube and then do a quick spin (less than 5000xg) to concentrate the liquid at the bottom.5. Store the suspended plasmid at -20°C. The DNA is stable for at least one year from date of shipping when stored at -20°C.
RefSeq:	NM_025593.1 , NP_079869.1
RefSeq Size:	1671 bp
RefSeq ORF:	204 bp
Locus ID:	66491
UniProt ID:	P62876
Cytogenetics:	7 F5
Gene Summary:	DNA-dependent RNA polymerase catalyzes the transcription of DNA into RNA using the four ribonucleoside triphosphates as substrates. Common component of RNA polymerases I, II and III which synthesize ribosomal RNA precursors, mRNA precursors and many functional non-coding RNAs, and a small RNAs, such as 5S rRNA and tRNAs, respectively. Pol II is the central component of the basal RNA polymerase II transcription machinery. Pols are composed of mobile elements that move relative to each other. In Pol II, POLR2L/RBP10 is part of the core element with the central large cleft (By similarity).[UniProtKB/Swiss-Prot Function]