

Product datasheet for **MG220859**

Nwd2 (NM_177006) Mouse Tagged ORF Clone

Product data:

Product Type:	Expression Plasmids
Product Name:	Nwd2 (NM_177006) Mouse Tagged ORF Clone
Tag:	TurboGFP
Symbol:	Nwd2
Synonyms:	3110047P20Rik; B830017A01Rik; Hn1-ps2; mKIAA1239
Mammalian Cell Selection:	Neomycin
Vector:	pCMV6-AC-GFP (PS100010)
E. coli Selection:	Ampicillin (100 ug/mL)
ORF Nucleotide Sequence:	>MG220859 representing NM_177006 Red=Cloning site Blue=ORF Green=Tags(s)

TTTTGTAATACGACTCACTATAGGGCGGCCGGAATTCGTCGACTGGATCCGGTACCGAGGAGATCTGCC
GCC**CGATCGCC**

ATGTGGCCGGCCGGTGC GGCCACCAAGCTGCCCTGTCCCGGGACTCCGCGCTCCGGCGGGCGGCGTTCT
CTGGTAATCTCACC GCCCTTCTTCTCACCTGGTACCCGCCGGTCCGAGCGTCCGGGTCTTCATCAGCGC
CAACCCGAAGATACAGGAGCGGAACGGCAGGCACTAAGAGAACTGTGTATCCGAAACTGAGAGAATTC
TGCAGAGAAAATATGGGTTGGAATTTCAAGTCAATAGTCTGTACTGGGAAATGAGGAAGATGAATGGG
ACAGCCCCGAAGTGCAGAAGATGCGCATGAAGCTGCTGGAGGAATGCTTGAAGAACTTCTGCAGGTCCATG
CTTTGTTGGCCTCTTAGGTGAAAAATATGGGAACATTCGAATCCCTGGGGAAGTAGAAGCTTCAGAGTTT
GAAATGATTTTGGATGCTGCTGTGCGAGGCAAAATAGAGACCAAGTTACTGGAAGATTGGTACTGTCCGG
ATGAGAACTCTGTGCCAGCAGCCTATTACCTCAGACCCAGGCTGGAGGTGCCAAGAAGCAACAAAACTC
AACACAGCCTTCTGCCAGTAGTGAACAGGAGAGGCCATGGCAAGAAATATCGGATGAAATCAAAACGATA
TTTAAAGCTGCTGTCAAAGTCTGCATGAACAGGGGAAAAATGAAGCAAAGTCAAGGCTAAGAGGTACCTGT
TCTCAGCTATCGAGGATGAGTTTGACTTTGCTCTAGGCAAGCAAACTCCAGCCTTCTGAAGAAGTGTGT
TTGCTACATCAGAAAGATTGCTAACATCGAACGCTTCGTGAAAAATCCAGAGATGGGGAATACATGGAC
ATAACCGGAACAGACCCAAAGAATCGTCCGTGACCCAGAAGCTCAAGAGAAGCTGATAAACTCAGGGATG
AATTCATTCCCTACCATTGTTGCATCCTCTAATTTGAGAGTGACACATCTGTCACTCACTGTGACATGAA
ACTGGGCTATTCCCAAGAGATAGAAAACATTACATAGAAGGACTTGGTAAGCAATTTTATGAAGACATG
ATTGATATAATTCAGGCAACAGTACAGCAGAACTTTGACACGGAGACTGATACGCTGTACGATGAAATCC
TGCAGCACTCCTCACTGTGTAACATATGCCTCCTTCTATGAATACAAATGTGAATCACTAAACATCTT
GCATAAATACATCCTTCCAAGCAAAACCGGCATATCAACCTCTCGTTGTGTATGGGGACCATGCACT
GGGAAGACTCTACTGCTAGCTGAAGTAGCAAAAAGGCTTATGGCTGGCTACATGAAGACACAGGGCCAG
ACTCTGACCCAGTTGTCATTGTGAGATTTCTAGGAACAACAGACATGAGTATTGATCTGAGGACACTTCT
TCTAAGTGTCTGTGAACAGCTGGCCGCTCACTACCGGTGTCTGGTCAAAGCTTTCTAAGAAGATCCAC



[View online »](#)

GACCTTCGTGACTTGTTTATAAACCTGTTGAATGAGTCTTCACTGCAGAGACCTCTGGTAATCATATTGG
ATGCCCTAGAGCAGCTCTCGGAGGCCGACGAAGCTAGGAAGCTCTGGTGGCTGCCCGCTCATCTTCCCCG
GTTTGTGCGGATCATCTCTCCACACTGCCTAACAAAACATGGGATCCTGCAGAACTCCGGTGCCTTATC
CATGAAGAAGACAACATACATTGAGCTGATTCGCCGGGACAGAAAGATGTGCAGTCAGGTCCTCAAACATC
AGCTGTGAGGGTCAAAGGAAGGTCACGTCCGGCCAGCAGATTTATGTAATAATGCATTCTCCAAGTG
CACACTGCCTATGTTTGTGAACCTAACTTTCAGAGAGGTGAGACACTGGAGATCTCACAAGGATGTCGAT
GAGTCCCTCCCTGTGTGACTGTCCACGAAAGCATAGAGCAGTTATTCTGGTCTTGGAGAAGAAGTGTG
GTCAGAAACTGGTCTCCAGGGCTCTGGTTACATCACCATGGCCAAAATGGGTTTGAGTGAAATGGAAC
GGAAGATGATTAGCTCTGGACAACAGCGTTATGAATGAACTCAATGAGAACACCCAGACCCAGCAATCCC
CTGAGAGTACCTTACCTGTATATTGCAAGGCTCAAGGAGGGTCTCAATGGTACTTAATAGAAAAGACATG
TGAAGAATGTCACACTCTTAGTCTGGGCCAACAGACACCTGCAGCTCATAGCTCAGAAGCTGTACCTGCA
AGAAGACAGCAACCTTCGAGAGATGCACACAATCCTGGCAGATTACTTTCTAGGGGTGTGGTCCGGAGGC
AGGAGGAAAGCTTTCTGCCTGGAAGACCCCTACTTGAATGGTGCCTCGACTTAGAGAACAGAAGTCTGC
TTGAGGAAGAAAAGCACTTCATGGAACAAGCATCTTCGACAGGCAGGCCCCCGACCAGCCCTGGGTTTT
CCAGTGTAAACCCACTAGACCCCGACATCTTTTTGTCAATCACCGGAAGATGTCTGAGCTCTGTATCAT
CTGACCAGGTGTGGGAAAACCGATGACCTCCTTTATGGAATCATCATGAACTTCAGCTGGCTTTACACCA
TGATCAAAATTGGCCAGTTTGACAAAGTCTTGCCGACATAGAATGGCTTACAACACTCTCGCAGAAAA
GGAGCTGAAGTTCCTGGCCAGCACACTCCGTAGCATCAGAAAACAAGGTCATTGCATTCCCAGGTTCCCTT
TCAGCAGAGCTGCAGCAAAGGCTGCTGCCTGTTGTGAGTTCCTGCCAAACTCAGACACCTCCTTTTAG
AATGTGACAAAGACGGACCCAAACTGCTCCATCGTTCCTCTCCATTTCATCCATGGATGTGACATACAG
CCCCGAGCGCTCCCTTAGCATCCAGCCACCTGCACGTACAGAGATCCTCCCCACCTGTAAACCCAGC
ACTGTTCTCACAGCTCTGAAAAATGGTTCCATCAGCACCTGGGATGTAGAAAACCGCCAGCTCTCCGGC
AAACTACTACAGCCAGTCCGTTATCCTGGCATGAAGCTGAGCAGTGATGAGAAGTACCTTGTGGTGTG
TACGACAACAACACCTTGCTGATTTACGACAATGTCAATTCCTGTCTCCTGTCTGAGGTGGAAATCAAA
GGGACCAAGCATGGAAGCGGCTCCACCTACATCAATGGATTTAACTCTCGGTCAATCATGCCCTTGCGT
GGCTAGAGGCCAGCAAAGATGTCAGTGTGATTGACCTGCTCTATGGATGGCCCTTTACCAGTTCCTACTG
CTGGTATGAGGTGACATGTGTCCAGTGTCCCTGGATGGGGTATATGCTTTCTGTGGCCAATACCTCAAT
AACACCACCATTTTCCACTTAGGGAGTGGAGAAAAAATATGTACCGTGACGTGAGAAATTTCCAGTGGCT
TTGTGAAGTTTCTCTCATCTTGGACACAGCTCAAGAGATGGTCATGGTAGACAGTGAGGGAAGTCTCTC
GGTTTGGAAACCCGAGGACATATCCAACCCCGAGTACTGAAGACTTTGACTGTGGAAGGAAGACAGC
GAAGTGGTGAAGCATTGAGCTTTCCGAAGACCAAGTGCATTCTGATCTGTAAGCTCTCAGCATTGAGC
TCTTAGACACCGCATGTGGAAGGTAGCTGAAAAATCCGAGCCAGGCACAACGAACGCTTTGTATCTGC
CGTGCTATCCAAAAACGGGGACTGTATCATCGAACCATGGAGAATACCCAGCGGTATTCTTCTGGAGG
CGGGACACAGGACAGTGCCTGGCGAGCTTGCGAGAAAAGCTCGGGTACCATCGTTAAGTTGGTAAAAATCCA
GTCACCACAATATGCTACTGTCTTTGTCAACCAGTGGCGTTCTTTCCATTGGGATATAGACATAATCAC
AGCTATGTCCAATATCGATAAACTGGAAAACCCATTAGAGTCTGGTGTGCGGCCAGGGGGGAGATC
ATCTACTCTCTCGATGGCTCCGATTGTGTACATAAATGGAACCTCAGCAGTGGGTTCAATGAAGCAGTAT
TTAAGCATGAAGGGATAGTGAACACTGTGTGTTAACGTCCACTGGGGACCTAATGGTGAAGTGCAGTGA
CAAAAGCAGCCAGTACGTCTGGCATAACCAGCAGTGGGGAAAACCTTTCCGAATTAACGGGCAGAGGATC
TCTCAGCTGCTGATCACCCACAACGACCGATTGTTGGTCTCTCTGTGAGGAGAACGCCTCCAGGGTTT
GGAGGCTGGCCACAGGCCACAGAGTCTGCAACATCTTGACCACCTTGCAAAATGCCTTATTACCTCTGC
AAACACCTTCGTGGTGGGAATGACGAAAAGCAAAGTGTGGCAGTCAGTCTTGGACCGGAAGTATCACC
AAGAAATCTGCTGTGAGGATGGGATCACCATTGTGAATTTCAAGTTGATCCCCGACTGTCTGACGTCA
TCGTGTTTATCACGTGAGCCGAGACCGTGAACCTCTGGAGCCTGACTGATGAAGTATTGTGCGCGTGT
GCAGCTTCCAAGCAACTCTTGA AAAACCTGGAGGATTTTGAATTTCTCCCAATGGGAAGCTCGGCATT
ATATCCCGTGGAGATGAAAATATCAATGTGCTGGATTTACACAGTGGAAAGCTACGGGTGGTTCACGCC
CTGGAGTCATCTGGAGGCAGAGGCTCTCTCGAGATGGTGCCTACCTGGTGTATATTTGTTCCGGAATGG
GGAGGAGGAGGAGGAAAACGATGCTATTTCTAGTTAATAGTGATGAGACTGGCTGACGGCAAAAACATC
GGTGTCTGCTCCCTATACAAAACACCACTTTCTTGCATTTCTCAGAGACACCTGAACATCATCGTCG
GCTTTGATGATGGGAGTATAGGGATATACACAGTTGTGGATCGTGTAGATGCTGCGTTGAAGATCAAAAT
TGCCACATCGAATAGCAGACAGATTTTCAACAATGCAACGCAGACATCCAGGCCAAAGTCAAACAGCTAC
TCCTTTAAAGTGTCTGTGGATTGCTTATGGCGAGAGTCCACTGAGGTCTTTGCAAGAGACAGCCCATCA

CCGTGAGTGACTCTTCTGAGTCCAACGAGGCAACACCCTCCAAGAAACACAATTCTTGTTATGACCGAGT
GTGTGCTGCCCTAGAATCCAGGAGCCACAGCTACACTCCAGATAAC

ACGCGTACGCGGGCCGCTCGAG - GFP Tag - GTTTAA

Protein Sequence:

>MG220859 representing NM_177006
Red=Cloning site Green=Tags(s)

MWPAGAGTKLPCPRDSALRRAAFSGNLTALPSHLVPAGRSVRVFI SANPEDTGAERQALRETVYPKLREF
CRENYGLEFQVIDLYWGIEEEDWDSPQLQMRMKLLEECLKTSAGPCFVGLLGEKYGNIRIPGEVEASEF
EMILDAAVEAKLETKLLLEDWYCRDENSVPAAAYLRPRLEVPRSNKNSTQPSASSEQERPWQEI SDEIKTI
FKA AVKLLHEQGKMQSQA KRYLFS AIEDEFDFALGKQTPAFLK KCVCI RIRKIANIERFVKIPEMGKYMD
ITGTDPRIVRDPEAQEKLIKLRDEFIPTIVASSNLRVYTSVTHCDMKLGYSQEIENHYIEGLGKQFYEDM
IDIIQATVQQNFDTETDLYDEILQHSSLCPTYASFYEYKCESLNILHKYILPSKTGHINPLVYGGPCT
GKTL LLA EVAKKAYGWLHEDTGPDSDPVIVRFLGTDDMSIDLRTLLLSVCEQLAVNYRCLVQSFPKKIH
DLRDLFINLLNESSLRPLVIIIDALEQLSEADEARKLWWLPAHLPRFVRIILSTLPNKHGILQKLRCLI
HEEDNYIELIPDRDKMCSQVLKHQLLRVSRKVTSGQQIYVNNAFSKCTLPMFVNLTFRVHRHRSKHDVD
ESSLCVTVHESIEQLFWSLEKKCGKLVSRALGYITMAKMGLEMELEDVLALDNSVMNELNENTRPSNP
LRVPYLYIARLKEGLNGYLIERHVKNVTLVWANRHLQLIAQKLYLQEDSNLREMHTILADYFLGVWSSG
RRKAFCELDPYLNGCLDENRSLLEEKHFMEQASFRQAPDQPWVFQCNPLEPDIFVNHKMSSELLYH
LTRCGKTDLLYGIIMNFSWLYTMIKIGQFDKVLADIELAYNYSQEKELKFLASTLRSIRNKVIAFPGL
SAELQQRLLPVSSLPKLRHLLLECDKDGPKYCSIVPLHSSMDVTYSPELPLASSHLHVTEILPTCNPS
TVLTALENGSISTWDVETRQLLRQITTAQSVILGMKLSSEKYL VVATTNNTLLIYDNVNSCLLSEVEIK
GTKHSGSTYINGFTLSVNHALAWLEASKDVTVIDLLYGWPLYQFHCWYEVTVCVQCSLDGVYAFCCGYLN
NTTIFHLGSGEKICTVTSEFSGGFVKFLLILDTAQEMVMVDSEGSLSVWNTEDISNPQLTEDFDCR KEDS
EVSIELSEDQSAILICKALSIELLDTGMWKVAEKFRARHNERFVSAVLSKNGDCIIATMENTPAVFFWR
RDTGQCLASLQESSGTIVKLVKSSHNMMLSLSTSGVLSIWDIDIITAMSNIDKTGKPIQSLVLPARGEI
IYSLDGSDCVHKWNFSSGFIEAVFKHEGIVEHCVL TSTGDLMVTSDDKSSQYVWHTSSGENLFRINGQRI
SQLLITHNDQFVVS LCEENASRVWRLATGHRVCNILLTTLQNAFITSANTFVVGMTKSKVLAVSLWTGSIT
KKFCCEDEGITIVNFKLIPDCPDVIVFITS AETVNLWSL TDEVICRRVQLPSNFKNLEDFEISPNGKLG I
ISRGDENINVLDLHSGKLRVHVASGVIWRQLSRDGRYLVIYICFRNGEEEEENDATSSLIVMRLADGKNI
GACSLYKPTFLAL SQRHLNII VGFDDGSI GIYTVVDRVDAALKIKIATSNSRQIFNNATQTSRPKSNSY
SFKVSVDCLWRESTEVFARDSPITVSDSSESNEATPSKKHNSCYDRVCAALESRSHSYTPDN

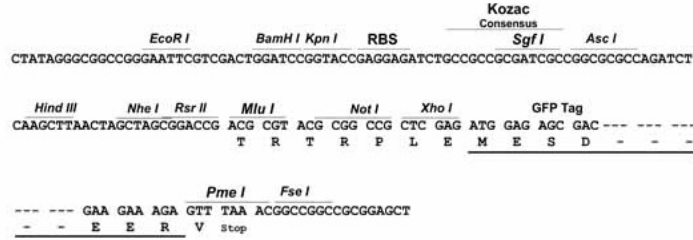
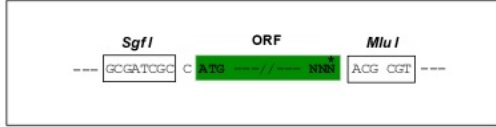
TRTRPLE - GFP Tag - V

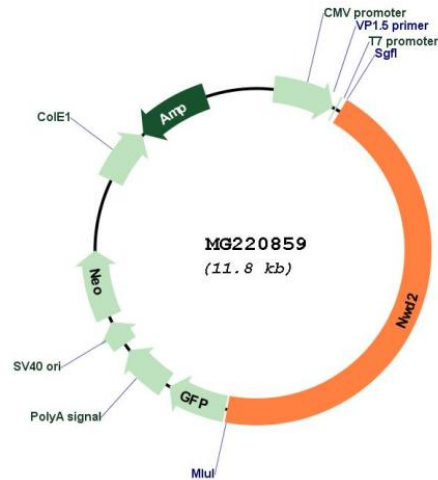
Restriction Sites:

Sgfl-MluI

Cloning Scheme:

Cloning sites used for ORF Shutting:



Plasmid Map:


ACCN: NM_177006

ORF Size: 5226 bp

OTI Disclaimer: The molecular sequence of this clone aligns with the gene accession number as a point of reference only. However, individual transcript sequences of the same gene can differ through naturally occurring variations (e.g. polymorphisms), each with its own valid existence. This clone is substantially in agreement with the reference, but a complete review of all prevailing variants is recommended prior to use. [More info](#)

OTI Annotation: This clone was engineered to express the complete ORF with an expression tag. Expression varies depending on the nature of the gene.

Components: The ORF clone is ion-exchange column purified and shipped in a 2D barcoded Matrix tube containing 10ug of transfection-ready, dried plasmid DNA (reconstitute with 100 ul of water).

Reconstitution Method:

1. Centrifuge at 5,000xg for 5min.
2. Carefully open the tube and add 100ul of sterile water to dissolve the DNA.
3. Close the tube and incubate for 10 minutes at room temperature.
4. Briefly vortex the tube and then do a quick spin (less than 5000xg) to concentrate the liquid at the bottom.
5. Store the suspended plasmid at -20°C. The DNA is stable for at least one year from date of shipping when stored at -20°C.

RefSeq: [NM_177006.3](#), [NP_795980.2](#)

RefSeq Size: 8539 bp

RefSeq ORF: 5229 bp

Locus ID: 319807

UniProt ID: [Q6P5U7](#)

Cytogenetics: 5 C3.1